

**CROP PRICES RECEIVED, MARKETING YEAR AVERAGE,
SOUTH DAKOTA AND UNITED STATES, 2008-2012 1/**

CROP	UNIT	2008	2009	2010	2011	2012 2/
----- DOLLARS -----						
SOUTH DAKOTA						
CORN FOR GRAIN	BU.	3.78	3.23	5.09	6.03	7.05
SOYBEANS	BU.	9.65	9.18	10.90	12.20	14.10
WHEAT, ALL	BU.	6.92	5.07	6.43	7.56	8.20
HAY, ALL	TON	93.00	80.00	79.00	121.00	197.00
SUNFLOWER, ALL	CWT.	19.70	13.10	21.50	27.90	24.00
SORGHUM FOR GRAIN	CWT.	5.62	4.88	8.56	10.20	12.00
OATS	BU.	2.68	1.93	2.79	3.55	3.80
BARLEY	BU.	5.06	2.41	3.26	5.44	5.70
FLAXSEED	BU.	11.30	7.50	12.20	13.50	13.20
PROSO MILLET	BU.	3.35	2.60	4.39	6.49	13.50
DRY EDIBLE BEANS	CWT.	29.60	26.50	31.20	42.90	37.00
UNITED STATES						
CORN FOR GRAIN	BU.	4.06	3.55	5.18	6.22	7.20
SOYBEANS	BU.	9.97	9.59	11.30	12.50	14.30
WHEAT, ALL	BU.	6.78	4.87	5.70	7.24	7.90
HAY, ALL	TON	152.00	108.00	114.00	178.00	191.00
SUNFLOWER, ALL	CWT.	21.80	15.10	23.30	29.10	25.40
SORGHUM FOR GRAIN	CWT.	5.72	5.75	8.96	10.70	12.80
OATS	BU.	3.15	2.02	2.52	3.49	3.80
BARLEY	BU.	5.37	4.66	3.86	5.35	6.40
FLAXSEED	BU.	12.70	8.15	12.20	13.90	13.60
PROSO MILLET	BU.	3.23	2.87	4.54	6.01	13.30
DRY EDIBLE BEANS	CWT.	34.60	30.00	28.00	42.10	38.50

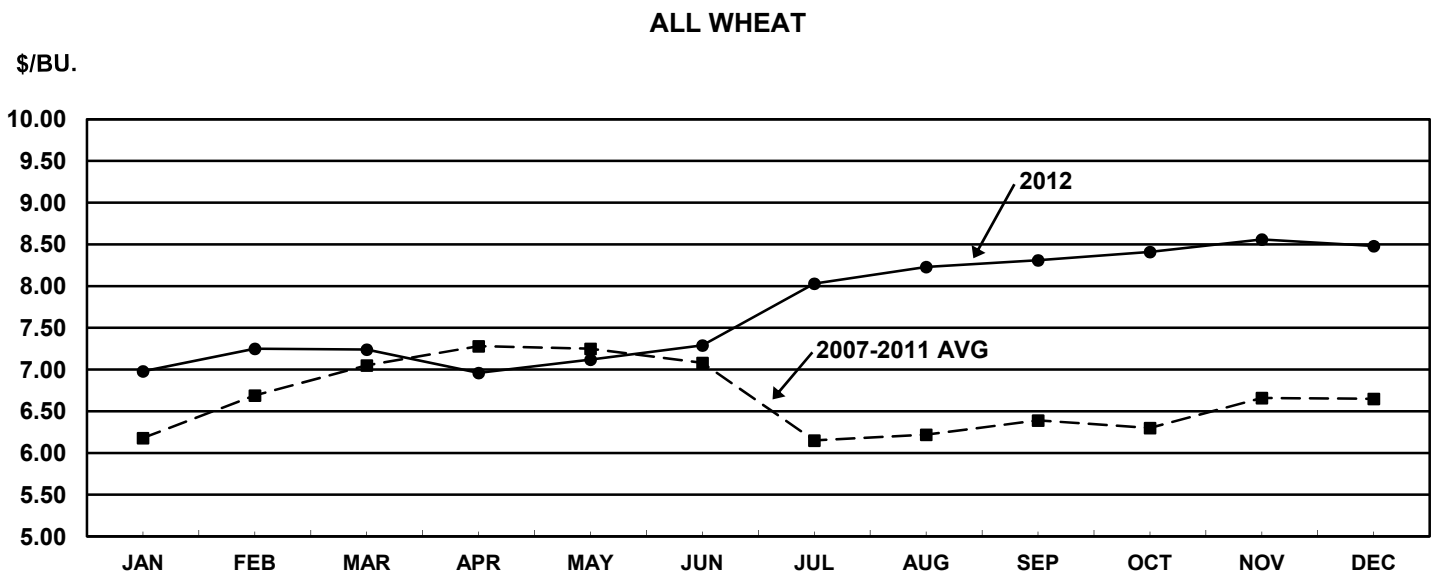
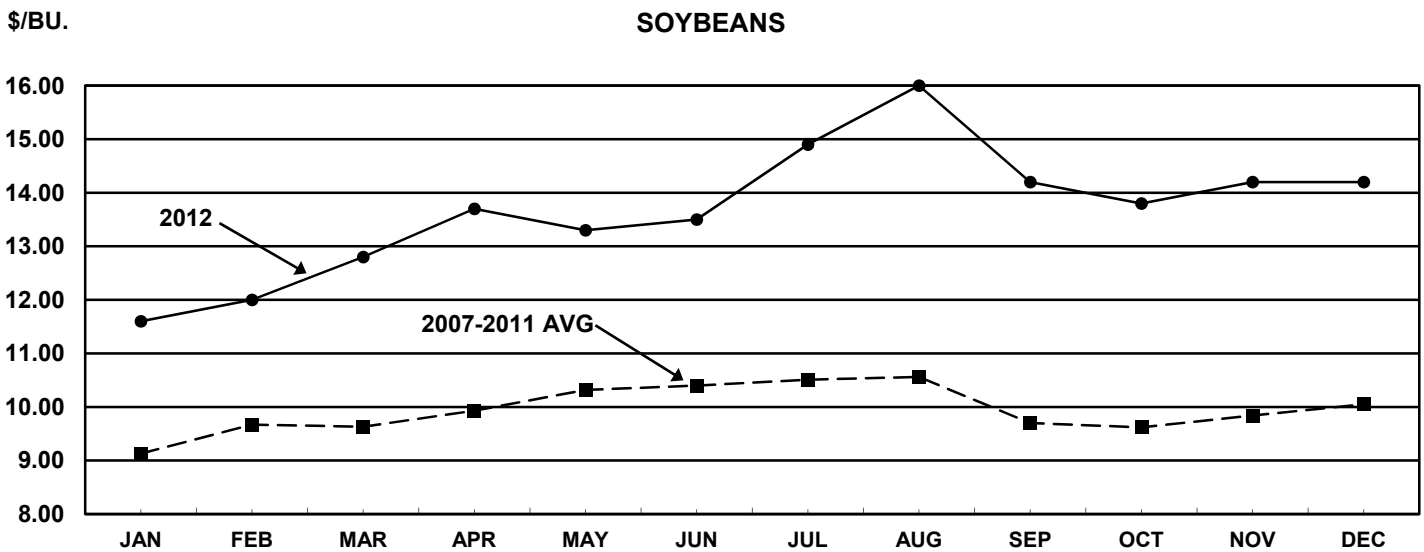
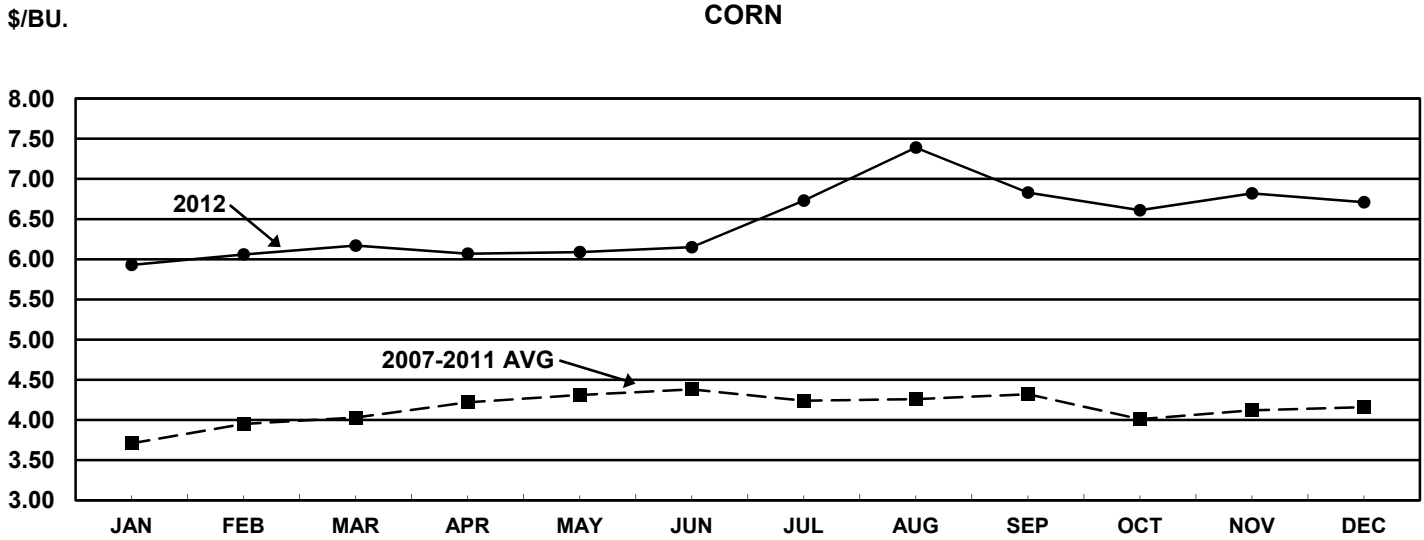
1/ MARKETING YEAR AVERAGE PRICES RECEIVED BY FARMERS ARE BASED ON MONTHLY PRICES WEIGHTED BY MONTHLY MARKETINGS DURING SPECIFIC PERIODS. PRICES DO NOT INCLUDE ALLOWANCE FOR CCC LOANS OUTSTANDING, PURCHASES BY THE GOVERNMENT, OR DEFICIENCY PAYMENTS. 2/ PRELIMINARY.

**CROP PRICES RECEIVED, MONTHLY AVERAGE,
SOUTH DAKOTA, 2011-2012**

COMMODITY	YEAR	JAN	FEB	MAR	APR	MAY	JUN	JUL	AUG	SEP	OCT	NOV	DEC
----- DOLLARS PER BUSHEL -----													
CORN	2011	4.49	5.32	5.44	6.08	6.02	6.15	6.10	6.75	6.62	5.68	5.68	5.65
	2012	5.93	6.06	6.17	6.07	6.09	6.15	6.73	7.39	6.83	6.61	6.82	6.71
SOYBEANS	2011	11.30	12.60	12.50	12.70	12.90	12.90	12.80	13.00	11.50	11.50	11.50	11.10
	2012	11.60	12.00	12.80	13.70	13.30	13.50	14.90	16.00	14.20	13.80	14.20	14.20
ALL WHEAT	2011	7.41	8.12	8.70	8.85	9.73	9.27	7.72	7.76	7.71	7.83	7.95	7.85
	2012	6.98	7.25	7.24	6.96	7.12	7.29	8.03	8.23	8.31	8.41	8.56	8.48
WINTER WHEAT	2011	6.31	7.21	7.23	7.07	8.06	7.38	7.15	7.26	7.18	6.98	6.92	6.83
	2012	6.58	6.69	6.56	6.17	6.30	6.47	7.72	8.03	8.13	8.28	8.38	8.31
OTHER SPRING WHEAT	2011	8.03	8.51	9.26	10.00	10.30	10.10	9.32	8.49	8.39	8.40	8.89	8.52
	2012	8.30	8.21	8.11	8.13	7.74	7.86	8.68	8.38	8.43	8.51	8.74	8.58
ALL HAY 1/	2011	82.00	79.00	80.00	81.00	97.00	97.00	103.00	102.00	124.00	126.00	126.00	137.00
	2012	122.00	123.00	122.00	129.00	125.00	142.00	171.00	204.00	206.00	221.00	209.00	213.00
ALFALFA HAY 1/	2011	87.00	83.00	83.00	83.00	99.00	99.00	106.00	105.00	130.00	133.00	132.00	147.00
	2012	133.00	132.00	129.00	135.00	128.00	149.00	175.00	215.00	222.00	234.00	226.00	230.00
OTHER HAY 1/	2011	69.00	70.00	70.00	70.00	81.00	81.00	81.00	82.00	97.00	96.00	97.00	97.00
	2012	87.00	89.00	85.00	95.00	103.00	116.00	145.00	144.00	151.00	152.00	147.00	155.00
ALL SUNFLOWER 2/	2011	19.20	28.30	26.90	30.60	27.60	30.20	30.20	31.70	34.60	27.80	27.40	28.10
	2012	30.10	26.60	28.20	27.30	26.10	25.30	26.30	29.20	28.00	24.30	23.90	24.00
OATS	2011	3.25	3.63	3.36	3.68	3.64	3.68	3.74	3.39	3.46	3.47	3.62	3.48
	2012	3.62	3.64	3.59	3.81	3.79	3.49	3.63	3.77	3.83	4.30	3.97	4.20

1/ DOLLARS PER TON, BALED. 2/ DOLLARS PER CWT.

CROPS PRICES RECEIVED, SOUTH DAKOTA



**VALUE OF PRODUCTION PER HARVESTED ACRE,
SOUTH DAKOTA, 2003-2012 1/**

YEAR	CORN FOR GRAIN	SOYBEANS	ALL WHEAT	ALL HAY	ALFALFA HAY	ALL SUNFLOWER	OATS
	DOLLARS PER ACRE	DOLLARS PER ACRE	DOLLARS PER ACRE	DOLLARS PER ACRE	DOLLARS PER ACRE	DOLLARS PER ACRE	DOLLARS PER ACRE
2003	253.08	191.40	145.94	98.49	120.65	111.93	97.24
2004	236.60	189.72	154.44	106.25	136.50	188.58	122.18
2005	213.01	188.65	151.80	114.45	139.75	184.67	113.76
2006	279.36	205.02	145.31	104.28	131.20	146.88	118.56
2007	504.57	403.20	270.29	182.84	225.00	339.99	206.64
2008	502.74	328.10	350.66	186.08	223.10	321.68	195.64
2009	487.73	385.56	220.20	162.39	188.60	241.61	140.89
2010	687.15	414.20	285.53	157.79	194.40	343.39	200.88
2011	795.96	451.40	278.24	286.08	342.90	474.55	209.46
2012	712.05	423.00	375.58	245.26	292.60	357.91	258.40

1/ VALUE OF PRODUCTION = (MARKETING YEAR AVERAGE PRICE MULTIPLIED BY TOTAL PRODUCTION) DIVIDED BY HARVESTED ACRES.

**LIVESTOCK PRICES RECEIVED,
UNITED STATES, 2011-2012 1/**

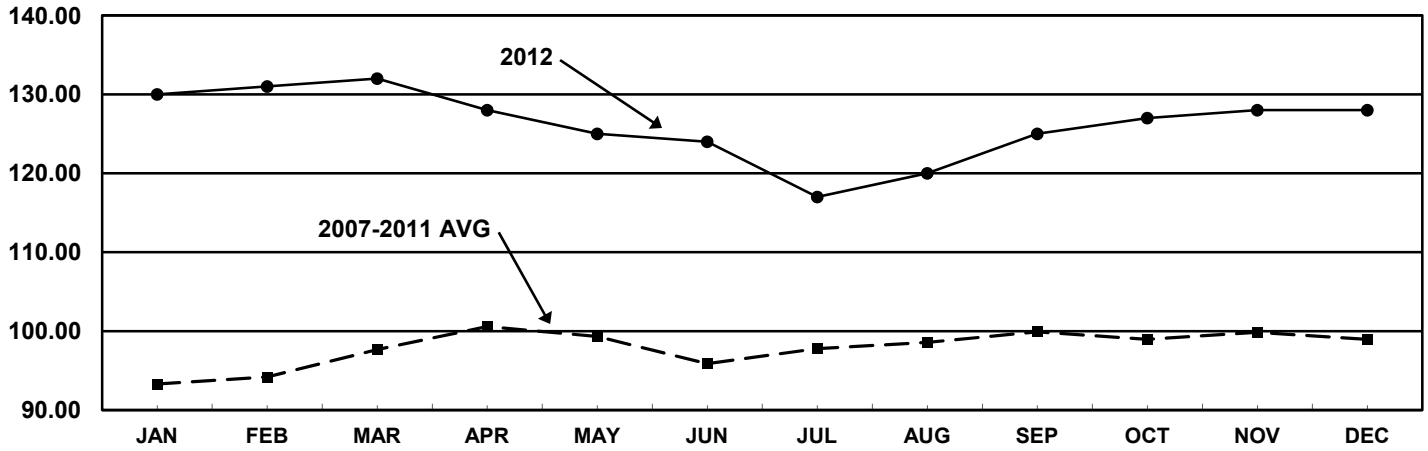
ITEM	YEAR	JAN	FEB	MAR	APR	MAY	JUN	JUL	AUG	SEP	OCT	NOV	DEC	ANN AVG 2/
ALL HOGS	2011	56.00	61.40	62.90	67.80	68.60	69.70	71.70	75.80	67.10	68.70	64.40	63.50	65.30
	2012	63.50	65.50	65.20	62.80	62.80	70.20	72.10	66.90	55.70	62.00	61.10	62.40	64.20
BARROWS & GILTS	2011	56.30	61.70	63.10	68.20	69.20	70.40	72.40	76.10	67.20	69.00	64.50	63.70	65.70
	2012	63.70	65.80	65.50	63.10	63.20	71.00	73.10	68.00	56.30	62.70	61.20	62.70	64.60
SOWS	2011	47.80	53.30	58.00	57.90	56.00	53.70	55.80	68.90	65.10	61.80	60.80	55.90	57.50
	2012	56.60	58.30	59.60	55.20	52.10	51.80	47.90	40.40	39.10	43.30	58.90	54.80	51.30
BEEF CATTLE	2011	107.00	108.00	115.00	119.00	112.00	107.00	111.00	111.00	112.00	117.00	120.00	120.00	113.00
	2012	125.00	127.00	128.00	124.00	122.00	121.00	114.00	117.00	121.00	123.00	123.00	124.00	122.00
STEERS & HEIFERS	2011	110.00	111.00	118.00	122.00	115.00	110.00	115.00	114.00	117.00	122.00	126.00	126.00	117.00
	2012	130.00	131.00	132.00	128.00	125.00	124.00	117.00	120.00	125.00	127.00	128.00	128.00	126.00
COWS	2011	65.00	72.50	75.20	78.90	78.20	75.90	73.60	70.80	67.30	65.00	66.00	70.50	71.20
	2012	74.60	82.00	84.20	85.50	87.70	86.00	80.90	79.90	79.20	77.30	76.80	77.30	80.70
CALVES	2011	136.00	139.00	148.00	147.00	137.00	133.00	138.00	134.00	132.00	145.00	153.00	157.00	142.00
	2012	169.00	184.00	184.00	178.00	176.00	166.00	144.00	155.00	162.00	164.00	161.00	163.00	168.00
SHEEP	2011	81.90	76.00	81.40	68.80	55.40	50.80	56.50	66.80	58.40	3/	3/	3/	3/
	2012	3/	3/	3/	3/	3/	3/	3/	3/	3/	3/	3/	3/	3/
LAMBS	2011	149.00	155.00	169.00	181.00	181.00	189.00	194.00	189.00	189.00	3/	3/	3/	3/
	2012	3/	3/	3/	3/	3/	3/	3/	3/	3/	3/	3/	3/	3/

1/ PRICES REPORTED IN DOLLARS PER HUNDREDWEIGHT. 2/ MONTHLY PRICES WEIGHTED BY ESTIMATED SALES IN EACH MONTH.
3/ SHEEP AND LAMB PRICES DISCONTINUED.

LIVESTOCK PRICES RECEIVED, UNITED STATES

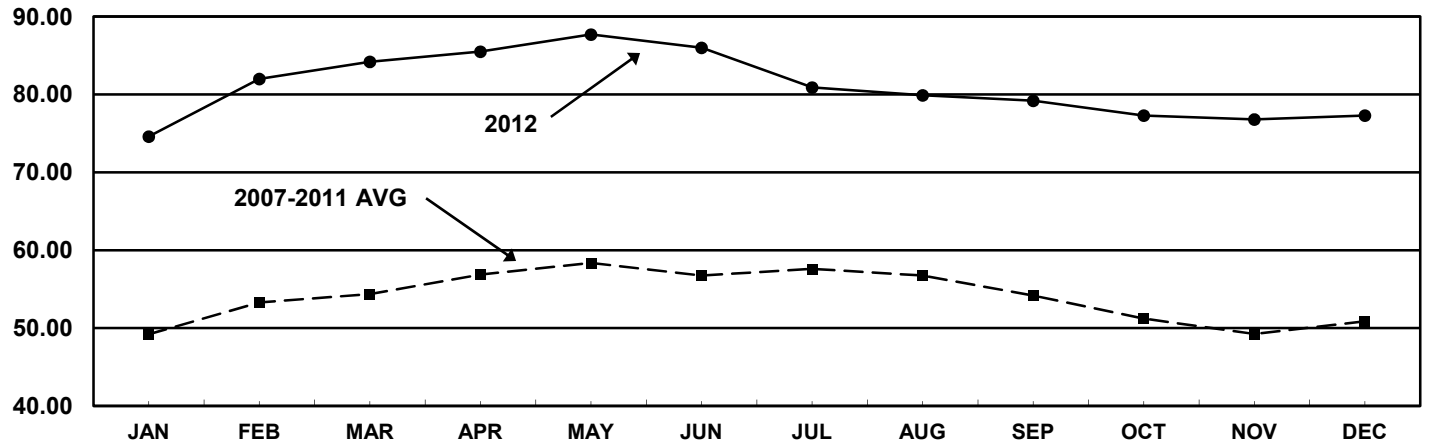
STEERS AND HEIFERS

\$/CWT.



COWS

\$/CWT.



HOGS

\$/CWT.

