

SOUTH DAKOTA INCOME AND PRICES SUMMARY 2005

INCOME

Cash receipts from farm marketings were up 15 percent in 2004, compared to 2003. Sales from all livestock and their related products accounted for \$2.422 billion, or 46 percent of the total 2004 receipts. Income from livestock was up 14 percent from 2003. Sales from all crops totaled \$2.455 billion, or 47 percent, of the total. Income from crops was up 17 percent from 2003. Government payments totaled \$399 million in 2004, down 27 percent from 2003, and are 7 percent of total receipts.

The largest income sources for 2004 were cattle, corn, soybeans, and wheat. Cattle, up nearly 9 percent from 2003, accounted for 31 percent of the total. Corn, up 35 percent from 2003, accounted for 18 percent of the total. Income from soybeans decreased 6 percent from 2003 and accounted for 16 percent of the total. Wheat receipts rose 34 percent and accounted for 8 percent of the total.

The 2004 net farm income totaled \$2.01 billion, up 24 percent from 2003.

PRICES

Preliminary 2005 marketing year average (MYA) crop prices were down compared to 2004 with the exception

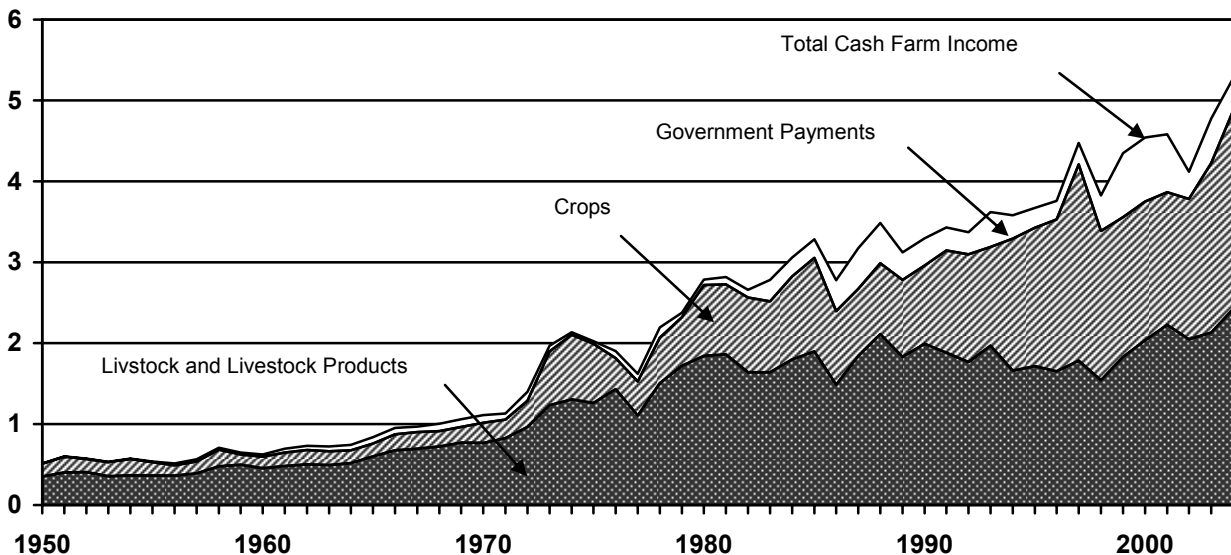
of wheat and oats. All wheat MYA price was up 7 percent to \$3.60. All hay MYA price was down 2 percent to \$61.50 per ton. The all sunflower price was down 19 percent to \$10.60 per cwt. Soybean prices, with a MYA for 2005 of \$5.30, were down 5 percent from 2004. Corn prices, with a MYA for 2005 of \$1.70, were 12 cents (7 percent) below 2004. Sorghum decreased 9 percent to \$3.00 per cwt.

Marketing year average prices are computed by weighting monthly prices by the estimated monthly sales. Page 25 shows the marketing year for the major crops.

Annual 2005 livestock prices increased from 2004 for all species. The beef cattle price increased 7 percent to \$95.90. Steers and heifers rose 7 percent to \$104.00, and cows were up 5 percent to \$54.00. Calves increased 10 percent to \$137.00 per cwt. The all hog price of \$50.90 increased 1 percent from 2004. Barrows and gilts rose 1 percent, while sows climbed 2 percent. At \$130.00, the lamb price was 13 percent higher, while sheep, at \$45.90, were up 12 percent from 2004.

CASH RECEIPTS, SOUTH DAKOTA, 1950-2004

BILLION DOL.



**CASH RECEIPTS FROM FARM MARKETINGS AND GOVERNMENT PAYMENTS,
SOUTH DAKOTA, 2002-2004**

COMMODITY	CASH RECEIPTS			PERCENT TOTAL ^{1/}		
	2002	2003	2004	2002	2003	2004
	----- 1,000 DOLLARS -----			----- PERCENT -----		
CROPS:						
WHEAT	192,813	319,177	426,961	4.7	6.7	8.1
CORN	657,479	701,984	949,749	16.0	14.7	18.0
SORGHUM	11,193	10,551	12,996	0.3	0.2	0.3
OATS	4,743	7,088	8,703	0.1	0.1	0.2
BARLEY	1,871	7,601	5,921	2/	0.2	0.1
RYE	421	852	1,502	2/	2/	2/
SOYBEANS	632,450	872,440	820,587	15.4	18.3	15.6
POTATOES	2,505	1,946	1,012	0.1	2/	2/
HAY	124,893	80,351	117,311	3.0	1.7	2.2
SUNFLOWER	67,009	53,159	65,494	1.6	1.1	1.2
MISCELLANEOUS CROPS	42,546	42,274	45,064	1.0	0.9	0.9
TOTAL CROPS	1,737,923	2,097,423	2,455,300	42.2	43.9	46.5
LIVESTOCK AND PRODUCTS:						
CATTLE AND CALVES	1,494,243	1,508,783	1,639,061	36.3	31.6	31.1
HOGS	243,872	274,685	371,000	5.9	5.8	7.0
SHEEP AND LAMBS	25,942	33,667	32,646	0.6	0.7	0.6
TURKEYS	55,608	51,925	57,285	1.4	1.1	1.1
EGGS	15,715	31,708	40,197	0.4	0.7	0.8
OTHER POULTRY	3,247	3,354	3,697	0.1	0.1	0.1
DAIRY PRODUCTS	163,584	176,746	220,440	4.0	3.7	4.2
HONEY	16,295	21,522	23,930	0.4	0.5	0.5
WOOL	1,397	1,995	1,879	2/	2/	2/
MISCELLANEOUS LIVESTOCK	25,932	25,762	32,049	0.6	0.5	0.6
TOTAL LIVESTOCK AND PRODUCTS	2,045,835	2,130,147	2,422,184	49.7	44.6	45.9
TOTAL CROPS AND LIVESTOCK	3,783,758	4,227,570	4,877,484	91.9	88.5	92.4
GOVERNMENT PAYMENTS	334,750	549,117	398,540	8.1	11.5	7.6
GRAND TOTAL	4,118,508	4,776,687	5,276,024	100.0	100.0	100.0

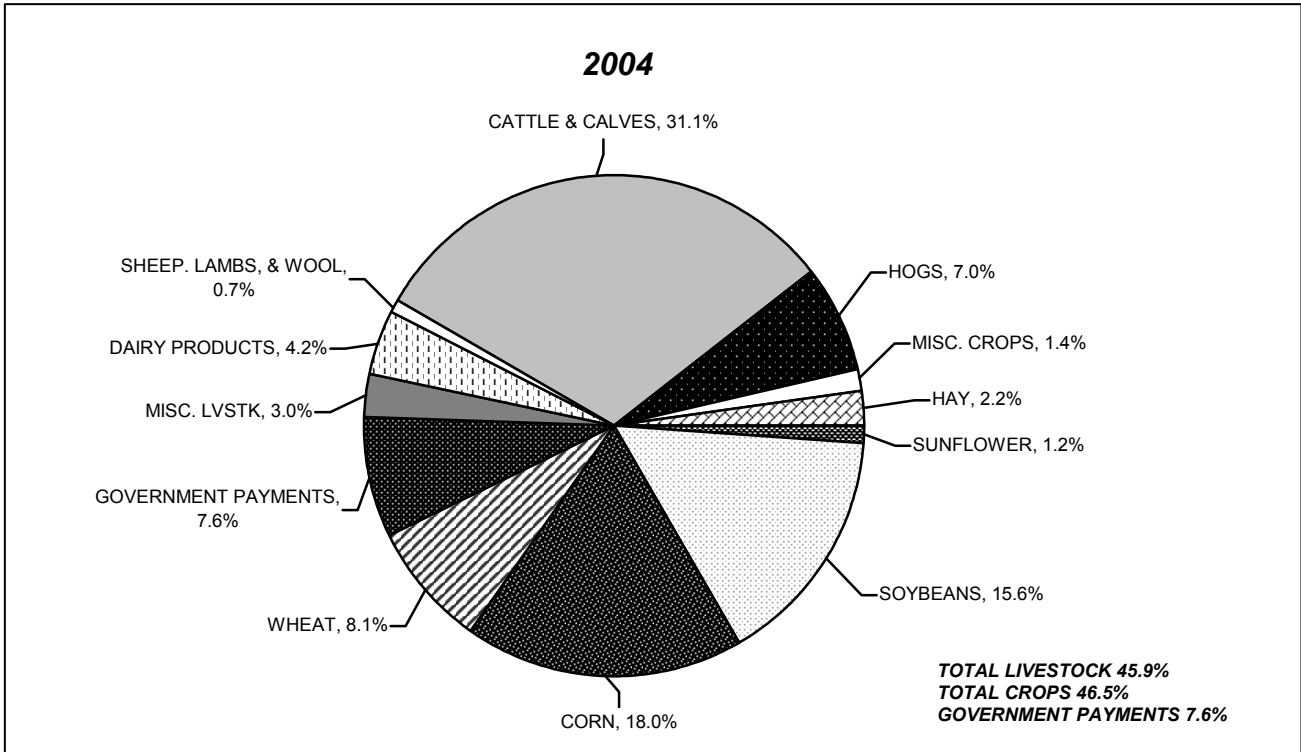
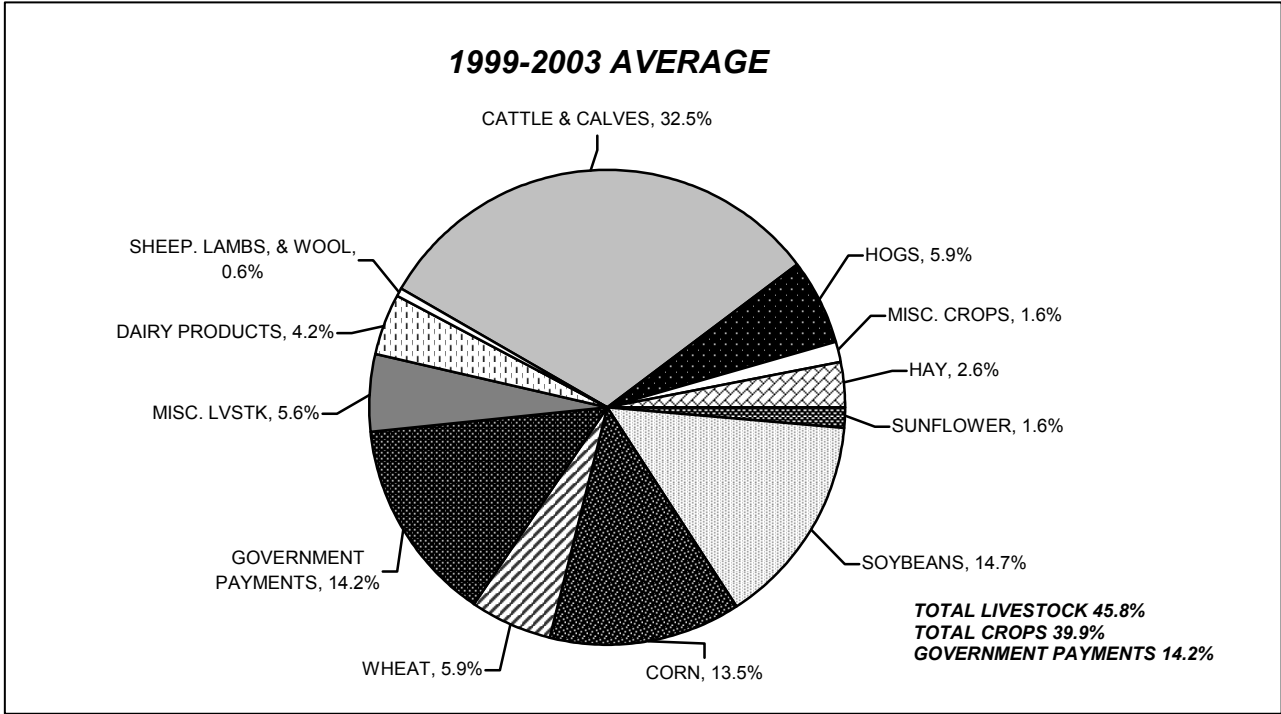
^{1/} PERCENTAGES MAY NOT ADD DUE TO ROUNDING. ^{2/} ROUNDS TO LESS THAN ONE TENTH OF ONE PERCENT.
NR = NOT FOR RELEASE.

SOURCE: ECONOMIC RESEARCH SERVICE, USDA.

**CASH RECEIPTS,
STATE RANKING, 2004**

ITEM	UNIT	1	2	3	4	5	6	7	8	9	10	S.D. RANK
CROPS	MIL. DOL.	CA 23,212	IL 7,769	IA 7,369	TX 5,391	FL 5,360	MN 4,861	NE 4,442	WA 4,132	IN 3,978	OH 3,387	17 2,455
LIVESTOCK & LIVESTOCK PRODUCTS	MIL. DOL.	TX 11,107	CA 8,623	NE 7,338	IA 7,284	KS 6,420	NC 5,351	WI 5,082	MN 4,934	AR 4,173	CO 4,156	19 2,422
GOVERNMENT PAYMENTS	MIL. DOL.	IA 1,264	IL 1,163	TX 1,152	NE 728	MN 704	KS 645	AR 599	IN 530	CA 507	MO 470	13 399
TOTAL	MIL. DOL.	CA 32,342	TX 17,650	IA 15,917	NE 12,508	IL 10,872	MN 10,499	KS 10,148	NC 8,423	AR 7,204	WI 7,162	18 5,276

CASH RECEIPTS, SOUTH DAKOTA PERCENT OF TOTAL



**CASH RECEIPTS FROM FARM MARKETINGS,
SOUTH DAKOTA, 2005 1/**

MONTH	CROPS		LIVESTOCK		TOTAL	
	1,000 DOLLARS	PERCENT	1,000 DOLLARS	PERCENT	1,000 DOLLARS	PERCENT
JANUARY	243,355	10.8	222,986	8.7	466,341	9.7
FEBRUARY	229,106	10.1	195,130	7.6	424,236	8.8
MARCH	194,862	8.6	214,499	8.4	409,361	8.5
APRIL	106,052	4.7	194,591	7.6	300,643	6.2
MAY	119,438	5.3	240,407	9.4	359,845	7.5
JUNE	124,877	5.5	191,389	7.5	316,266	6.6
JULY	166,115	7.3	177,658	6.9	343,773	7.1
AUGUST	185,488	8.2	214,352	8.4	399,839	8.3
SEPTEMBER	116,678	5.2	202,526	7.9	319,203	6.6
OCTOBER	258,459	11.4	221,270	8.7	479,729	10.0
NOVEMBER	289,168	12.8	268,818	10.5	557,986	11.6
DECEMBER	227,996	10.1	213,087	8.3	441,083	9.2
YEAR	2,261,594	100.0	2,556,713	100.0	4,818,305	100.0

1/ PERCENTS MAY NOT ADD DUE TO ROUNDING.

**FARM PRODUCTION EXPENSES,
SOUTH DAKOTA, 2002-2004**

ITEM	2002	2003	2004
	----- MILLION DOLLARS -----		
FEED	305.7	264.4	359.3
LIVESTOCK	257.8	318.4	354.1
SEED	255.4	263.0	290.2
FERTILIZER & LIME	229.1	247.0	310.0
PESTICIDES	215.0	223.3	243.6
FUEL & OIL	162.5	191.3	216.3
ELECTRICITY	74.2	64.9	58.9
REPAIR & MAINTENANCE	254.8	210.4	296.6
OTHER MISCELLANEOUS	534.5	619.9	692.0
INTEREST	298.1	284.2	295.0
LABOR EXPENSES	132.7	92.4	119.3
NET RENT TO NON-OPERATOR LANDLORDS	282.5	304.9	258.3
CAPITAL CONSUMPTION	432.4	438.9	465.3
PROPERTY TAXES	190.2	224.0	240.3
TOTAL PRODUCTION EXPENSES	3,625.0	3,746.8	4,199.1

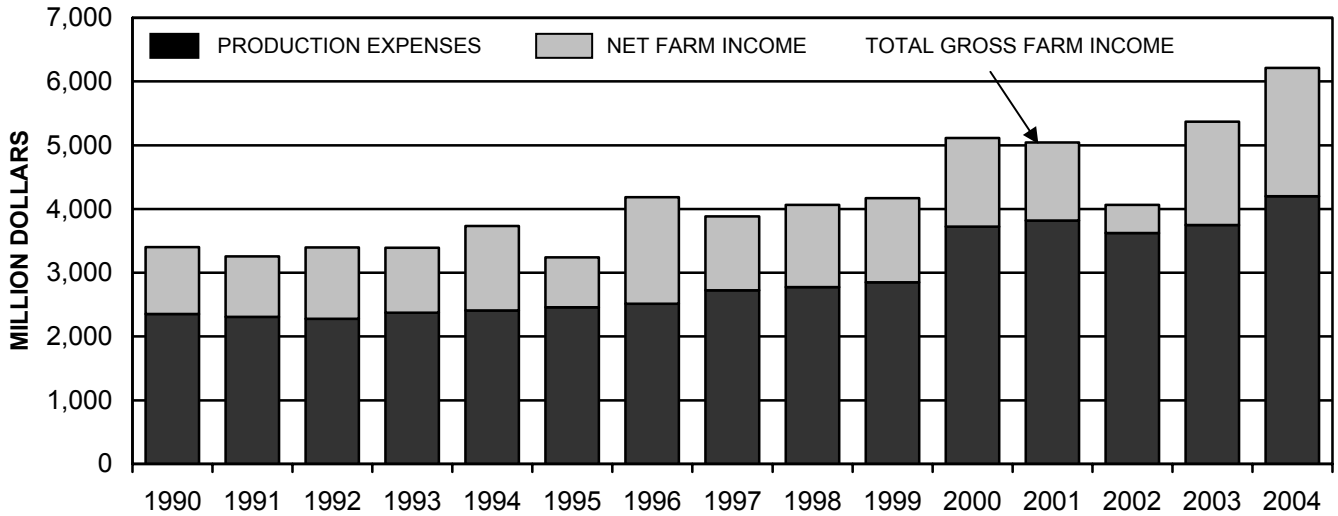
**NET FARM INCOME: VALUE ADDED TO AGRICULTURE SECTOR,
SOUTH DAKOTA, 2000-2004**

ITEM 1/	2000	2001	2002	2003	2004
	----- THOUSAND DOLLARS -----				
VALUE OF CROP PRODUCTION	1,725,119	1,686,450	1,347,297	2,190,761	2,664,968
FOOD GRAINS	310,361	221,765	193,234	320,028	428,463
FEED CROPS	670,102	742,758	809,627	815,167	1,103,096
OIL CROPS	702,100	640,877	700,400	926,609	888,125
FRUITS AND TREE NUTS	235	284	354	347	353
VEGETABLES	7,172	9,013	9,838	8,555	7,657
ALL OTHER CROPS	24,517	25,481	24,470	26,717	27,606
HOME CONSUMPTION	4,060	3,703	4,100	2,804	2,177
VALUE OF INVENTORY ADJUSTMENT 2/	6,572	42,569	(394,725)	90,535	207,492
VALUE OF LIVESTOCK PRODUCTION	2,143,746	2,142,576	1,851,111	2,087,691	2,527,210
MEAT ANIMALS	1,723,335	1,909,190	1,764,058	1,817,135	2,042,707
DAIRY PRODUCTS	187,008	205,058	163,584	176,746	220,440
POULTRY AND EGGS	68,134	78,070	74,570	86,987	101,179
MISCELLANEOUS LIVESTOCK	37,680	32,948	43,623	49,279	57,858
HOME CONSUMPTION	1,807	1,391	1,634	2,571	3,676
VALUE OF INVENTORY ADJUSTMENT 2/	125,782	(84,381)	(196,358)	(45,027)	101,350
REVENUES FROM SERVICES AND FORESTRY	481,999	500,089	530,395	540,441	620,831
MACHINE HIRE AND CUSTOMWORK	51,808	62,382	44,062	31,158	91,638
FOREST PRODUCTS SOLD	580	617	648	680	714
OTHER FARM INCOME	290,711	286,659	333,233	349,078	357,339
GROSS IMPUTED RENTAL VALUE OF FARM DWELLINGS	138,900	150,431	152,452	159,525	171,140
VALUE OF AGRICULTURAL SECTOR PRODUCTION	4,350,865	4,329,116	3,728,803	4,818,894	5,813,009
PURCHASED INPUTS	2,307,642	2,411,382	2,278,149	2,392,786	2,811,275
FARM ORIGIN	805,583	857,283	818,899	845,734	1,003,562
FEED PURCHASED	266,562	304,965	305,682	264,401	359,272
LIVESTOCK AND POULTRY PURCHASED	326,441	318,497	257,837	318,380	354,135
SEED PURCHASED	212,580	233,821	255,380	262,953	290,155
MANUFACTURED INPUTS	675,542	703,236	680,826	726,507	828,760
FERTILIZERS AND LIME	236,507	253,563	229,096	247,022	309,972
PESTICIDES	207,570	210,562	215,042	223,328	243,631
PETROLEUM FUEL AND OILS	181,339	176,090	162,511	191,288	216,268
ELECTRICITY	50,126	63,021	74,177	64,869	58,889
OTHER PURCHASED INPUTS	826,517	850,863	778,424	820,545	978,953
REPAIR AND MAINTENANCE OF CAPITAL ITEMS	276,496	283,533	254,818	210,378	296,641
MACHINE HIRE AND CUSTOMWORK	113,862	105,389	95,182	81,618	82,002
MARKETING, STORAGE, AND TRANSPORTATION EXPENSES	48,145	67,890	54,881	66,725	85,019
CONTRACT LABOR	9,474	7,271	6,786	10,607	7,945
MISCELLANEOUS EXPENSES	378,540	386,780	366,757	451,217	507,346
NET GOVERNMENT TRANSACTIONS	599,972	519,473	133,676	315,483	148,605
DIRECT GOVERNMENT PAYMENTS	789,895	715,264	334,750	549,117	398,540
MOTOR VEHICLE REGISTRATION AND LICENSING FEES	10,861	12,077	10,855	9,655	9,667
PROPERTY TAXES	179,062	183,714	190,219	223,979	240,268
GROSS VALUE ADDED	2,643,195	2,437,207	1,584,330	2,741,591	3,150,339
CAPITAL CONSUMPTION	415,121	423,083	432,401	438,863	465,284
NET VALUE ADDED	2,228,074	2,014,124	1,151,929	2,302,728	2,685,055
PAYMENTS TO STAKEHOLDERS	840,866	787,994	713,346	681,536	672,620
EMPLOYEE COMPENSATION (TOTAL HIRED LABOR)	120,445	139,161	132,718	92,438	119,285
NET RENT RECEIVED BY NON-OPERATOR LANDLORDS	371,012	326,231	282,519	304,893	258,300
REAL ESTATE AND NON-REAL ESTATE INTEREST	349,409	322,602	298,109	284,205	295,035
NET FARM INCOME	1,387,208	1,226,130	438,583	1,621,192	2,012,435

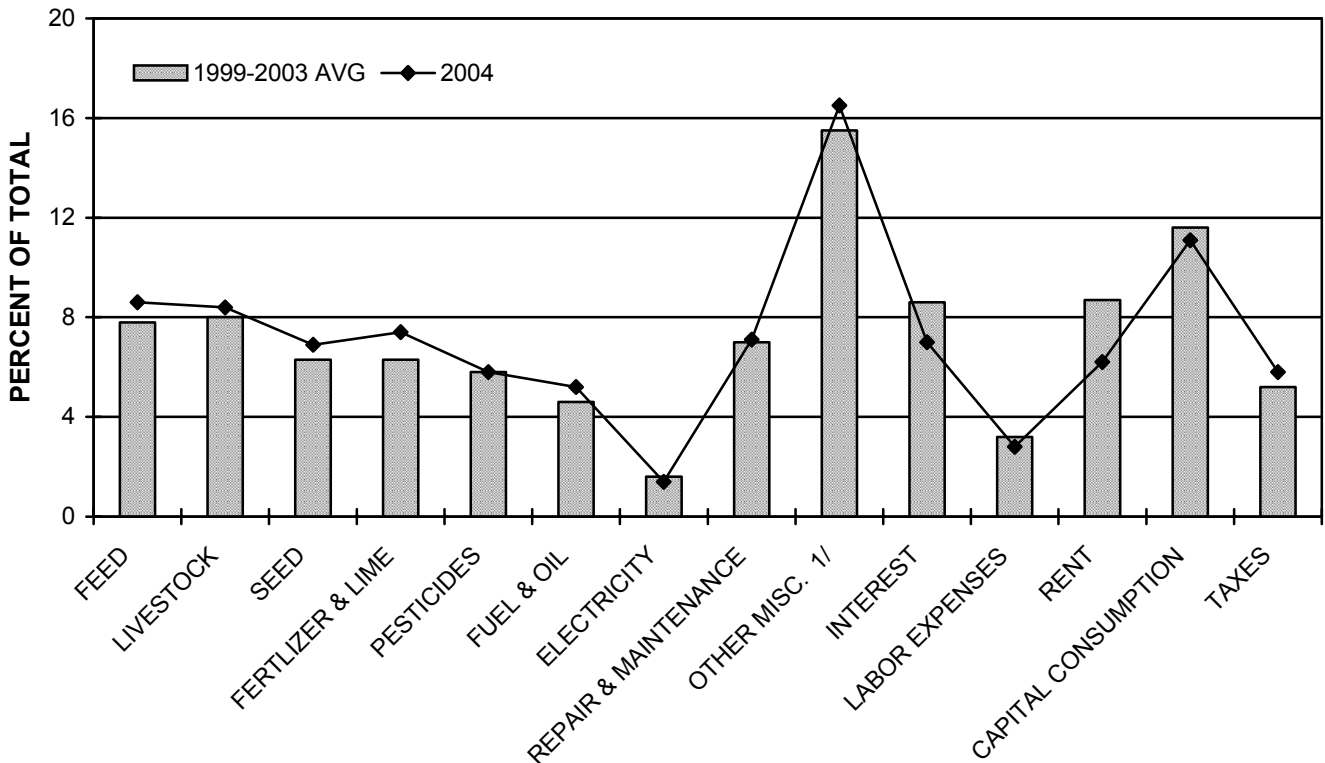
1/ VALUE OF AGRICULTURAL SECTOR PRODUCTION IS THE GROSS VALUE OF THE COMMODITIES AND SERVICES PRODUCED WITHIN A YEAR. NET VALUE-ADDED IS THE SECTOR'S CONTRIBUTION TO THE NATIONAL ECONOMY AND IS THE SUM OF THE INCOME FROM PRODUCTION EARNED BY ALL FACTORS-OF-PRODUCTION REGARDLESS OF OWNERSHIP. NET FARM INCOME IS THE FARM OPERATOR'S SHARE OF INCOME FROM THE SECTOR'S PRODUCTION ACTIVITIES. THE CONCEPT PRESENTED IS CONSISTENT WITH THAT EMPLOYED BY THE ORGANIZATION FOR ECONOMIC COOPERATION AND DEVELOPMENT. 2/ A POSITIVE VALUE OF INVENTORY CHANGE REPRESENTS CURRENT-YEAR PRODUCTION NOT SOLD BY DECEMBER 31. A NEGATIVE VALUE IS AN OFFSET TO PRODUCTION FROM PRIOR YEARS INCLUDED IN CURRENT-YEAR SALES.

SOURCE: ECONOMIC RESEARCH SERVICE/USDA

FARM INCOME, SOUTH DAKOTA, 1990-2004



PRODUCTION EXPENDITURES, SOUTH DAKOTA, 1999-2003 AVERAGE AND 2004



1/ OTHER MISCELLANEOUS INCLUDES MACHINE HIRE AND CUSTOM WORK; MARKETING, STORAGE, AND TRANSPORTATION; CONTRACT LABOR; MOTOR VEHICLE REGISTRATION AND LICENSING FEES; MISCELLANEOUS EXPENSES WHICH INCLUDE VETERINARIAN SERVICES, CUSTOM FEEDING EXPENSES, GROSS INSURANCE, AND OTHER MANAGEMENT EXPENSES.