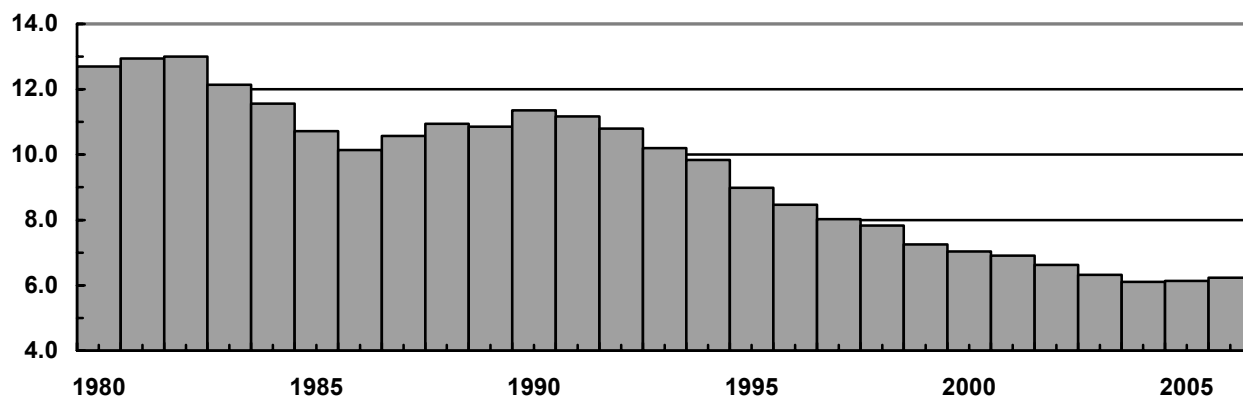


**SHEEP INVENTORY,
UNITED STATES, JANUARY 1, 2001-2006**

ITEM	2001	2002	2003	2004	2005	2006
	----- 1,000 HEAD -----					
ALL SHEEP AND LAMBS	6,908	6,623	6,321	6,105	6,135	6,230
TOTAL MARKET SHEEP AND LAMBS	1,956	1,752	1,651	1,606	1,602	1,591
TOTAL BREEDING SHEEP	4,952	4,871	4,670	4,499	4,533	4,639
EWES 1 YEAR PLUS	4,071	3,939	3,773	3,610	3,573	3,657
RAMS 1 YEAR PLUS	202	201	194	188	190	196
REPLACEMENT LAMBS	679	732	703	702	771	786
LAMBS BORN	4,520	4,355	4,140	4,096	4,125	--

**SHEEP INVENTORY,
UNITED STATES, JANUARY 1, 1980-2006**

MIL. HEAD



**SHEEP AND LAMBS, PRODUCTION, DISPOSITION, AND INCOME,
UNITED STATES, 2001-2005**

YEAR	NUMBER ON HAND BEGINNING OF YEAR	LAMB CROP	INSHIPMENTS 1/	MARKETINGS		FARM SLAUGHTER	DEATHS		NUMBER ON HAND END OF YEAR
				SHEEP	LAMBS		SHEEP	LAMBS	
	----- 1,000 HEAD -----								
2001	6,908	4,520	1,589	740	4,838	65	275	475	6,623
2002	6,623	4,355	1,749	855	4,794	66	262	429	6,321
2003	6,321	4,140	1,558	828	4,387	67	238	394	6,105
2004	6,105	4,096	1,478	695	4,184	65	215	385	6,135
2005	6,135	4,125	1,511	671	4,206	65	216	384	6,230

1/ LIVESTOCK SHIPPED INTO STATES FOR FEEDING OR BREEDING. EXCLUDES ANIMALS BROUGHT IN FOR IMMEDIATE SLAUGHTER.

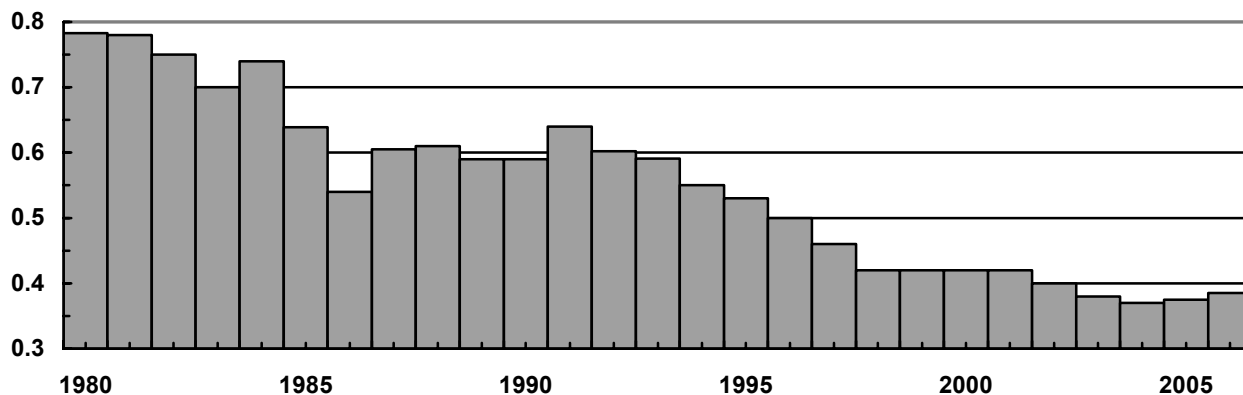
YEAR	PRODUCTION	MARKETINGS	AVERAGE PRICE PER 100 LBS.		CASH RECEIPTS	VALUE OF HOME CONSUMPTION	GROSS INCOME
			SHEEP	LAMBS			
	----- 1,000 POUNDS -----		----- DOLLARS -----		----- 1,000 DOLLARS -----		
2001	501,483	651,929	34.60	66.90	403,175	8,166	411,341
2002	485,149	649,585	28.20	74.10	429,125	8,560	437,685
2003	470,108	609,681	34.90	94.40	507,890	10,756	518,646
2004	464,042	570,483	38.80	101.00	518,847	11,717	530,564
2005	475,505	571,174	45.10	110.00	569,921	12,747	582,668

**SHEEP INVENTORY,
SOUTH DAKOTA, JANUARY 1, 2001-2006**

ITEM	2001	2002	2003	2004	2005	2006
	----- 1,000 HEAD -----					
ALL SHEEP AND LAMBS	420	400	380	370	375	385
TOTAL MARKET SHEEP AND LAMBS	105	80	65	80	90	105
TOTAL BREEDING SHEEP	315	320	315	290	285	280
EWES 1 YEAR PLUS	265	265	265	240	230	230
RAMS 1 YEAR PLUS	9	9	10	9	8	8
REPLACEMENT LAMBS	41	46	40	41	47	42
LAMBS BORN	305	325	300	290	290	--

**SHEEP INVENTORY,
SOUTH DAKOTA, JANUARY 1, 1980-2006**

MIL. HEAD



**SHEEP AND LAMBS, PRODUCTION, DISPOSITION, AND INCOME,
SOUTH DAKOTA, 2001-2005**

YEAR	NUMBER ON HAND BEGINNING OF YEAR	LAMB CROP	INSHIPMENTS 1/	MARKETINGS		FARM SLAUGHTER	DEATHS		NUMBER ON HAND END OF YEAR
				SHEEP	LAMBS		SHEEP	LAMBS	
	----- 1,000 HEAD -----								
2001	420	305	39	24.0	284.0	0.5	18	38	400
2002	400	325	47	36.0	308.0	0.5	13	35	380
2003	380	300	77	66.0	283.0	0.5	11	27	370
2004	370	290	43	51.0	239.5	0.5	10	27	375
2005	375	290	56	47.0	253.5	0.5	10	25	385

1/ LIVESTOCK SHIPPED INTO STATE FOR FEEDING OR BREEDING. EXCLUDES ANIMALS BROUGHT IN FOR IMMEDIATE SLAUGHTER.

YEAR	PRODUCTION	MARKETINGS	AVERAGE PRICE PER 100 LBS.		CASH RECEIPTS	VALUE OF HOME CONSUMPTION	GROSS INCOME
			SHEEP	LAMBS			
	----- 1,000 POUNDS -----		----- DOLLARS -----		----- 1,000 DOLLARS -----		
2001	27,565	31,981	33.20	73.60	22,051	102	22,153
2002	31,019	36,229	30.00	79.10	25,942	65	26,007
2003	30,065	38,349	37.20	106.00	33,667	134	33,801
2004	28,135	31,569	40.90	115.00	30,495	407	30,902
2005	28,978	32,410	45.90	130.00	36,019	428	36,447

**SHEEP SHORN, WOOL PRODUCTION AND VALUE,
SOUTH DAKOTA, 2001-2005**

YEAR	SHEEP SHORN	WEIGHT PER FLEECE	WOOL PRODUCTION	PRICE PER POUND	VALUE OF PRODUCTION
	1,000 HEAD	POUNDS	1,000 POUNDS	CENTS	1,000 DOLLARS
2001	360	8.2	2,965	31	919
2002	375	8.3	3,105	45	1,397
2003	330	8.0	2,625	76	1,995
2004	345	7.6	2,610	72	1,879
2005	330	7.8	2,582	60	1,549

**SHEEP AND LAMB SLAUGHTER, NUMBER AND AVERAGE LIVEWEIGHT,
SOUTH DAKOTA, 2001-2005 1/**

YEAR	JAN	FEB	MAR	APR	MAY	JUN	JUL	AUG	SEP	OCT	NOV	DEC	TOTAL
	----- 1,000 HEAD -----												
2001	1.7	1.5	1.5	0.9	1.2	1.2	1.8	1.5	0.7	1.3	1.1	1.4	15.8
2002	1.5	1.2	1.2	1.4	1.0	1.3	1.7	1.2	0.6	1.3	1.1	1.2	14.6
2003	1.0	0.9	1.0	1.5	1.2	1.3	1.5	0.9	1.3	1.0	1.1	1.3	13.8
2004	0.7	1.0	1.1	0.4	0.5	1.4	1.1	1.4	0.4	1.2	1.1	1.2	11.8
2005	0.6	0.7	1.0	0.6	1.1	1.3	0.8	0.9	1.0	0.3	1.0	1.0	10.3
	YEARLY AVERAGE												
	----- POUNDS -----												
2001	99	97	95	116	110	104	106	102	107	112	116	107	105
2002	115	121	111	115	107	113	111	108	119	114	121	120	114
2003	122	121	118	130	118	119	121	123	120	130	120	120	122
2004	123	123	119	118	129	123	121	126	134	119	121	121	123
2005	123	123	122	155	121	123	124	121	120	117	119	129	124

1/ INCLUDES SLAUGHTER IN FEDERALLY INSPECTED AND IN OTHER SLAUGHTER PLANTS BUT EXCLUDES ANIMALS SLAUGHTERED ON FARMS.

**GOAT INVENTORY,
SOUTH DAKOTA AND UNITED STATES, JANUARY 1, 2005-2006**

YEAR	SOUTH DAKOTA			UNITED STATES		
	MILK GOATS	MEAT GOATS	ANGORA GOATS	MILK GOATS	MEAT GOATS	ANGORA GOATS
	----- HEAD -----					
2005	1,500	6,500	NA	285,000	2,150,000	280,000
2006	NA	7,000	NA	288,000	2,260,000	278,000

NA = NOT AVAILABLE