

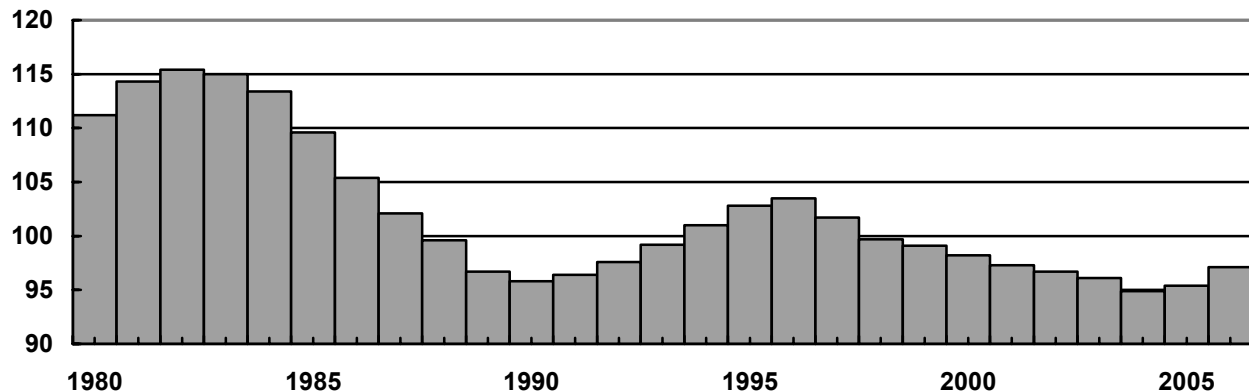
**CATTLE INVENTORY,  
UNITED STATES, 2001-2006 1/**

ITEM	2001		2002		2003		2004		2005		2006
	JAN 1	JUL 1	JAN 1	JUL 1	JAN 1	JUL 1	JAN 1	JUL 1	JAN 1	JUL 1	JAN 1
	----- 1,000 HEAD -----										
ALL CATTLE AND CALVES	97,298	105,800	96,723	105,100	96,100	103,900	94,888	103,600	95,438	104,500	97,102
COWS & HEIFERS THAT HAVE CALVED	42,570	43,000	42,239	42,900	42,125	42,700	41,851	42,500	41,920	42,800	42,311
BEEF COWS	33,398	33,900	33,134	33,750	32,983	33,600	32,861	33,500	32,915	33,750	33,253
MILK COWS	9,172	9,100	9,106	9,150	9,142	9,100	8,990	9,000	9,005	9,050	9,058
HEIFERS OVER 500 LBS.	19,776	16,400	19,683	16,200	19,628	15,900	19,345	15,950	19,573	16,200	19,978
BEEF REPLACEMENT	5,588	4,600	5,571	4,600	5,624	4,600	5,518	4,800	5,691	5,000	5,905
MILK REPLACEMENT	4,057	3,600	4,055	3,700	4,114	3,600	4,020	3,600	4,118	3,700	4,278
OTHER HEIFERS	10,131	8,200	10,057	7,900	9,891	7,700	9,806	7,550	9,763	7,500	9,795
STEERS OVER 500 LBS.	16,461	14,600	16,804	14,500	16,554	14,200	16,277	14,200	16,476	14,400	16,923
BULLS OVER 500 LBS.	2,274	2,100	2,244	2,100	2,248	2,100	2,206	2,050	2,219	2,100	2,263
CALVES UNDER 500 LBS.	16,216	29,700	15,753	29,400	15,545	29,000	15,210	28,900	15,250	29,000	15,626
CALVES BORN DURING YEAR	38,300		38,224		37,903		37,505		37,780		
TOTAL CATTLE ON FEED	14,276		14,050		13,220		13,813		13,745		14,132

1/ TOTALS MAY NOT ADD DUE TO ROUNDING.

**CATTLE INVENTORY,  
UNITED STATES, JANUARY 1, 1980-2006**

MIL. HEAD



**CATTLE AND CALVES, PRODUCTION, DISPOSITION, AND INCOME,  
UNITED STATES, 2001-2005**

YEAR	NUMBER ON HAND BEGINNING OF YEAR	CALF CROP	INSHIPMENTS 1/	MARKETINGS		FARM SLAUGHTER	DEATHS		NUMBER ON HAND END OF YEAR	
				CATTLE	CALVES		CATTLE	CALVES		
	----- 1,000 HEAD -----									
2001	97,298	38,300	21,813	47,102	9,183	194	1,722	2,487	96,723	
2002	96,723	38,224	21,522	46,804	9,296	193	1,710	2,366	96,100	
2003	96,100	37,903	22,405	47,686	9,613	191	1,710	2,320	94,888	
2004	94,888	37,505	21,399	45,049	9,116	185	1,711	2,292	95,438	
2005	95,438	37,780	20,841	43,798	8,918	189	1,718	2,335	97,102	

1/ LIVESTOCK SHIPPED INTO STATES FOR FEEDING OR BREEDING. EXCLUDES ANIMALS BROUGHT IN FOR IMMEDIATE SLAUGHTER.

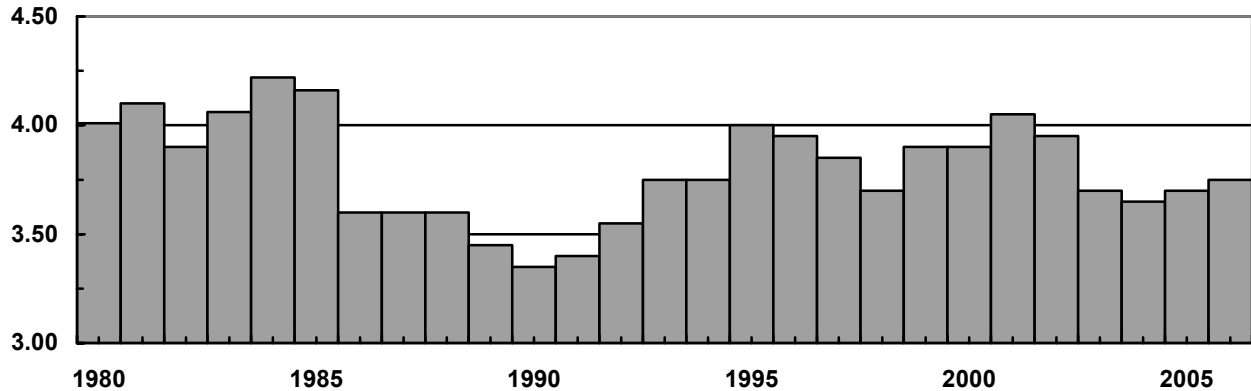
YEAR	PRODUCTION	MARKETINGS	AVERAGE PRICE PER 100 LBS.		CASH RECEIPTS	VALUE OF HOME CONSUMPTION	GROSS INCOME
			CATTLE	CALVES			
	----- 1,000 POUNDS -----		----- DOLLARS -----		----- 1,000 DOLLARS -----		
2001	42,581,294	55,527,524	71.30	106.00	40,540,645	362,317	40,902,962
2002	42,409,258	56,141,324	66.50	96.40	38,095,116	333,768	38,428,884
2003	42,242,705	56,758,262	79.70	102.00	45,092,283	384,290	45,476,573
2004	41,497,188	54,045,957	85.80	119.00	47,506,963	427,777	47,934,740
2005	41,578,277	53,068,833	89.70	135.00	49,208,682	459,479	49,668,161

**CATTLE INVENTORY,  
SOUTH DAKOTA, JANUARY 1, 2001-2006**

ITEM	2001	2002	2003	2004	2005	2006
	----- 1,000 HEAD -----					
ALL CATTLE AND CALVES	4,050	3,950	3,700	3,650	3,700	3,750
COWS & HEIFERS THAT						
HAVE CALVED	1,900	1,890	1,780	1,790	1,790	1,800
BEEF COWS	1,807	1,803	1,696	1,711	1,710	1,719
MILK COWS	93	87	84	79	80	81
HEIFERS OVER 500 LBS.	920	870	790	795	855	840
BEEF REPLACEMENT	310	300	290	290	295	295
MILK REPLACEMENT	30	30	30	35	40	45
OTHER HEIFERS	580	540	470	470	520	500
STEERS OVER 500 LBS.	780	750	730	670	710	700
BULLS OVER 500 LBS.	100	95	90	90	85	90
CALVES UNDER 500 LBS.	350	345	310	305	260	320
CALVES BORN DURING YEAR	1,850	1,840	1,730	1,720	1,720	--
TOTAL CATTLE ON FEED	385	370	395	375	400	400

**CATTLE INVENTORY,  
SOUTH DAKOTA, JANUARY 1, 1980-2006**

MIL. HEAD



**CATTLE AND CALVES, PRODUCTION, DISPOSITION, AND INCOME,  
SOUTH DAKOTA, 2001-2005**

YEAR	NUMBER ON HAND BEGINNING OF YEAR	CALF CROP	INSHIPMENTS 1/	MARKETINGS		FARM SLAUGHTER	DEATHS		NUMBER ON HAND END OF YEAR
				CATTLE	CALVES		CATTLE	CALVES	
----- 1,000 HEAD -----									
2001	4,050	1,850	514	1,780	502	2	60	120	3,950
2002	3,950	1,840	472	1,860	537	2	58	105	3,700
2003	3,700	1,730	519	1,665	482	2	55	95	3,650
2004	3,650	1,720	512	1,602	440	2	53	85	3,700
2005	3,700	1,720	565	1,645	450	2	53	85	3,750

1/ LIVESTOCK SHIPPED INTO STATE FOR FEEDING OR BREEDING. EXCLUDES ANIMALS BROUGHT IN FOR IMMEDIATE SLAUGHTER.

YEAR	PRODUCTION	MARKETINGS	AVERAGE PRICE PER 100 LBS.		CASH RECEIPTS	VALUE OF HOME CONSUMPTION	GROSS INCOME
			CATTLE	CALVES			
----- 1,000 POUNDS -----	----- 1,000 POUNDS -----	----- 1,000 POUNDS -----	----- DOLLARS -----		----- 1,000 DOLLARS -----	----- 1,000 DOLLARS -----	----- 1,000 DOLLARS -----
2001	1,553,999	1,970,800	76.50	106.00	1,566,898	10,748	1,577,646
2002	1,557,488	2,064,800	69.60	96.20	1,494,238	10,605	1,504,843
2003	1,482,445	1,847,800	78.70	107.00	1,508,781	12,784	1,521,565
2004	1,545,817	1,790,000	89.30	125.00	1,669,156	15,062	1,684,218
2005	1,500,787	1,837,500	95.90	137.00	1,845,390	15,859	1,861,249

**CATTLE ON FEED, 1,000+ CAPACITY FEEDLOTS,  
SOUTH DAKOTA, 2004-2005**

MONTH	ON FEED		PLACEMENTS		MARKETINGS		OTHER DISAPPEARANCE	
	2004	2005	2004	2005	2004	2005	2004	2005
	----- 1,000 HEAD -----							
JANUARY	200	192	30	41	29	26	1	2
FEBRUARY	200	205	43	32	32	26	1	1
MARCH	210	210	33	31	36	34	2	2
APRIL	205	205	26	27	28	31	3	1
MAY	200	200	28	28	37	38	3	4
JUNE	188	186	20	26	34	48	1	3
JULY	173	161	12	15	26	30	2	3
AUGUST	157	143	25	24	43	34	1	1
SEPTEMBER	138	132	41	40	35	40	1	2
OCTOBER	143	130	65	68	38	35	1	2
NOVEMBER	169	161	51	63	33	33	1	1
DECEMBER	186	190	42	46	34	28	2	3
ANNUAL TOTAL	--	--	416	441	405	403	19	25

**CATTLE SLAUGHTER, NUMBER AND AVERAGE LIVEWEIGHT,  
SOUTH DAKOTA, 2001-2005 1/**

YEAR	JAN	FEB	MAR	APR	MAY	JUN	JUL	AUG	SEP	OCT	NOV	DEC	TOTAL
	----- 1,000 HEAD -----												
2001	28.5	25.5	28.2	25.3	27.3	26.3	24.8	27.9	24.2	29.7	29.0	27.2	324.1
2002	26.5	12.4	12.9	13.8	13.4	14.0	14.3	14.2	13.3	16.8	15.8	16.1	183.5
2003	2/	2/	2/	2/	2/	2/	2/	2/	2/	2/	2/	2/	2/
2004	2/	2/	2/	2/	2/	2/	2/	2/	2/	2/	2/	2/	2/
2005	2/	2/	2/	2/	2/	2/	2/	2/	2/	2/	2/	2/	2/
	YEARLY AVERAGE												
	----- POUNDS -----												
2001	1,404	1,417	1,411	1,406	1,366	1,393	1,378	1,395	1,383	1,385	1,372	1,379	1,391
2002	1,386	1,286	1,286	1,266	1,244	1,256	1,239	1,258	1,240	1,241	1,224	1,267	1,273
2003	2/	2/	2/	2/	2/	2/	2/	2/	2/	2/	2/	2/	2/
2004	2/	2/	2/	2/	2/	2/	2/	2/	2/	2/	2/	2/	2/
2005	2/	2/	2/	2/	2/	2/	2/	2/	2/	2/	2/	2/	2/

1/ INCLUDES SLAUGHTER IN FEDERALLY INSPECTED AND IN OTHER SLAUGHTER PLANTS BUT EXCLUDES ANIMALS SLAUGHTERED ON FARMS. 2/ CATTLE SLAUGHTER NOT PUBLISHED.

**FEEDLOTS AND FED CATTLE MARKETED,  
SOUTH DAKOTA, 2001-2005**

YEAR	FEEDLOT CAPACITY							
	UNDER 1,000		1,000-3,999		OVER 4,000 1/		TOTAL	
	LOTS	CATTLE MARKETED	LOTS	CATTLE MARKETED	LOTS	CATTLE MARKETED	LOTS	CATTLE MARKETED
	1,000 HEAD		1,000 HEAD		1,000 HEAD		1,000 HEAD	
2001	3,200	270	103	178	25	212	3,328	660
2002	3,100	270	119	210	27	212	3,246	692
2003	3,100	270	126	241	26	226	3,252	737
2004	3,100	280	130	192	23	213	3,253	685
2005	3,000	280	138	190	26	213	3,164	683

1/ LOTS AND MARKETINGS FROM LARGER SIZE GROUPS ARE COMBINED TO AVOID DISCLOSING INDIVIDUAL OPERATIONS.