



Quarterly Grain Stocks

Southern Plains Regional Field Office · Post Office Box 70, Austin, Texas 78767 · 800-626-3142 · www.nass.usda.gov

Cooperating with the Oklahoma Department of Agriculture, Food and Forestry and Texas Department of Agriculture

January 12, 2024

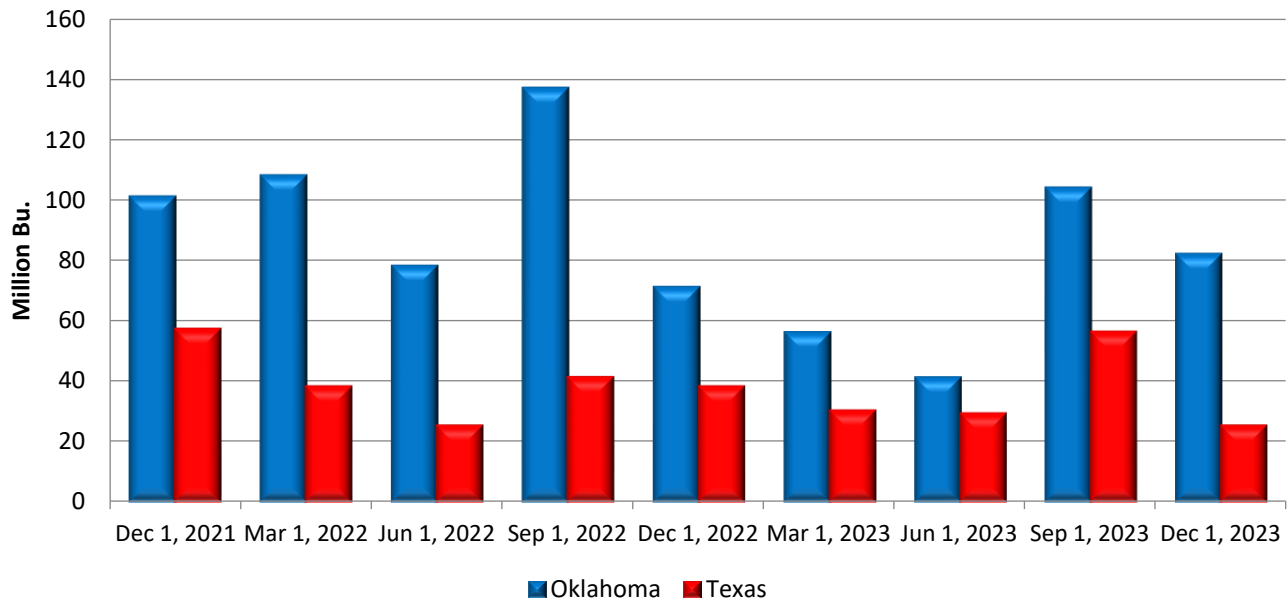
Contact: Aspen Dick or Kelly Jefferson

The grain stocks estimates are based on surveys conducted during the first two weeks of December. Data provided by Oklahoma and Texas operators are the foundation of the estimates for the Southern Plains region. Separate surveys are conducted to obtain the on-farm and off-farm estimates. We would like to thank all operators who responded to the survey. Results from the next quarterly survey will be made available on March 28, 2024.

Oklahoma stocks of wheat in all positions on December 1, at 81.6 million bushels, were up 15 percent from the 2022 level of 70.8 million bushels. Off-farm wheat stocks, at 76.3 million, bushels were 13 percent higher than December 1, 2022.

Texas stocks of wheat in all positions on December 1, at 25.0 million bushels, were down 34 percent from the 2022 level of 38.2 million bushels. Off-farm wheat stocks, at 23.9 million bushels, were 34 percent lower than December 1, 2022.

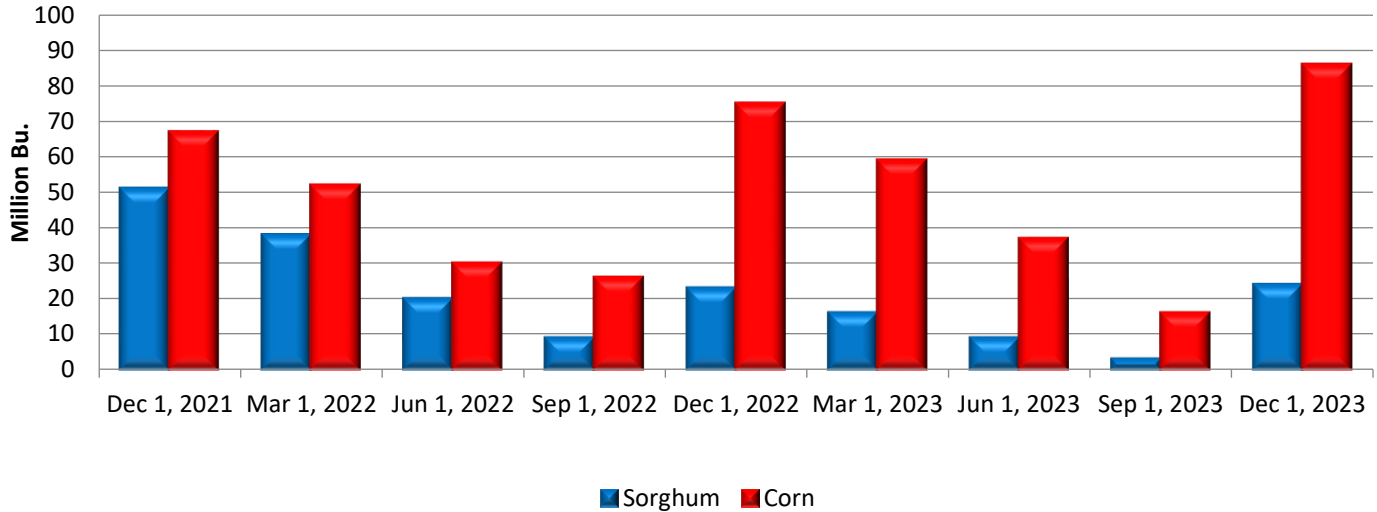
Quarterly Wheat Stocks All Positions



Texas sorghum stocks in all positions on December 1 totaled 25.7 million bushels, up 8 percent from the previous year. Off-farm sorghum stocks, at 24.1 million bushels, were 6 percent above December 1, 2022.

Texas off-farm corn stocks on December 1, 2023, at 85.8 million bushels, were up 15 percent from a year earlier. On-farm corn stocks are not published for Texas.

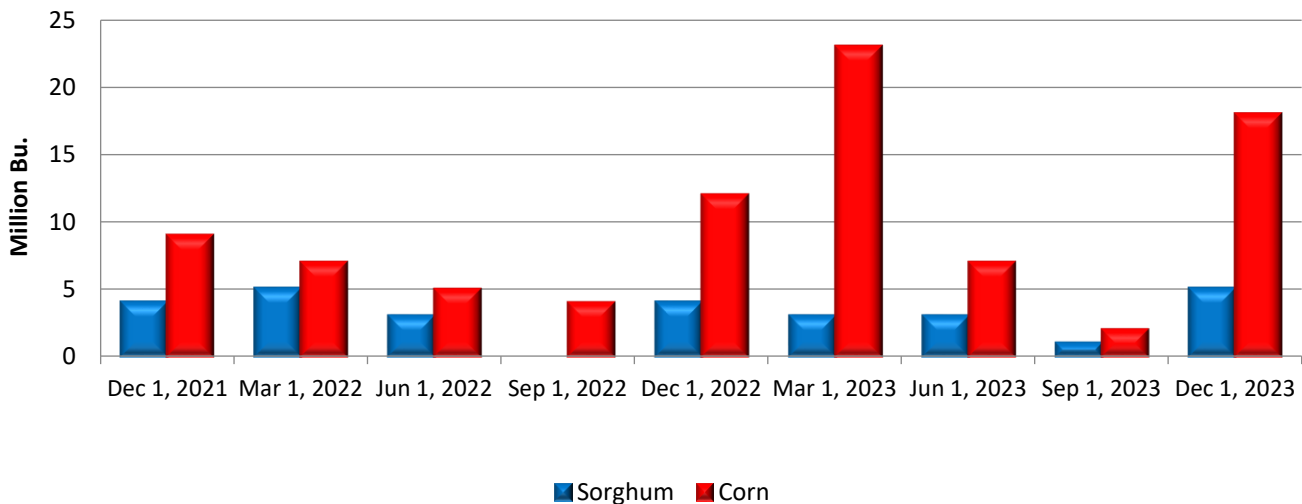
Texas Quarterly Stocks Sorghum and Corn, Off-farm



Oklahoma off-farm sorghum stocks, at 5.35 million bushels, were 24 percent above December 1, 2022. On-farm sorghum stocks are not published for the state.

Oklahoma off-farm corn stocks on December 1, 2023, at 17.8 million bushels, were up 43 percent from a year earlier. On-farm corn stocks are not published for Oklahoma.

Oklahoma Quarterly Stocks Sorghum and Corn, Off-farm¹



¹ September 2022 Off-farm Sorghum Stocks were not published.

Stocks of Grain – Oklahoma, Texas, and United States: December 1, 2023 and Comparable Quarters

Item	Off farm Total ¹			Total all positions		
	Dec 1, 2022	Sep 1, 2023	Dec 1, 2023	Dec 1, 2022	Sep 1, 2023	Dec 1, 2023
	1,000 bushels	1,000 bushels	1,000 bushels	1,000 bushels	1,000 bushels	1,000 bushels
Oklahoma						
Barley	(D)	(D)	23	(D)	(D)	23
Corn	12,489	1,610	17,839	(D)	(D)	(D)
Oats	158	137	86	(D)	(D)	(D)
Soybeans	1,738	(D)	3,130	(D)	(D)	(D)
Sorghum	4,304	637	5,349	(D)	(D)	(D)
Wheat	67,724	96,763	76,327	70,824	104,263	81,627
Texas						
Barley	303	146	50	303	146	50
Corn	74,575	15,953	85,756	(D)	(D)	(D)
Oats	510	1,994	618	(D)	(D)	(D)
Soybeans	2,525	65	284	(D)	(D)	(D)
Sorghum	22,740	2,980	24,063	23,840	3,250	25,663
Wheat	36,221	47,818	23,944	38,221	56,318	25,044
United States						
Barley	51,681	55,640	56,261	138,471	179,790	142,171
Corn	4,073,207	755,801	4,338,869	10,813,207	1,360,201	12,168,869
Oats	29,515	39,874	38,546	53,695	75,324	62,576
Soybeans	1,544,152	192,184	1,546,949	3,021,152	264,184	2,999,949
Sorghum	142,271	22,848	155,345	160,071	24,237	188,345
Wheat	949,930	1,168,981	1,015,294	1,311,830	1,767,121	1,410,254

(D) Withheld to avoid disclosing data for individual operations.

¹ Includes stocks at mills, elevators, warehouses, terminals, and processors.

U.S. Highlights: Total stocks of corn in the United States on December 1, 2023 were 12.2 billion bushels, 13 percent higher than December 1, 2022. All wheat stocks were estimated at 1.41 billion bushels in all positions, up 8 percent from last December. U.S. stocks of sorghum totaled 188 million bushels, 18 percent above December 1, 2022. Stocks of soybeans in all positions totaled 3.00 billion bushels, down 1 percent from last year.

NASS provides accurate, timely, useful and objective statistics in service to U.S. agriculture. In order to view the full national report, please visit the following website: www.nass.usda.gov/Publications.