



# Cattle on Feed

Southern Plains Regional Field Office · Post Office Box 70, Austin, Texas 78767 · 800-626-3142 · [www.nass.usda.gov](http://www.nass.usda.gov)  
Cooperating with the Oklahoma Department of Agriculture, Food and Forestry and Texas Department of Agriculture

August 19, 2022

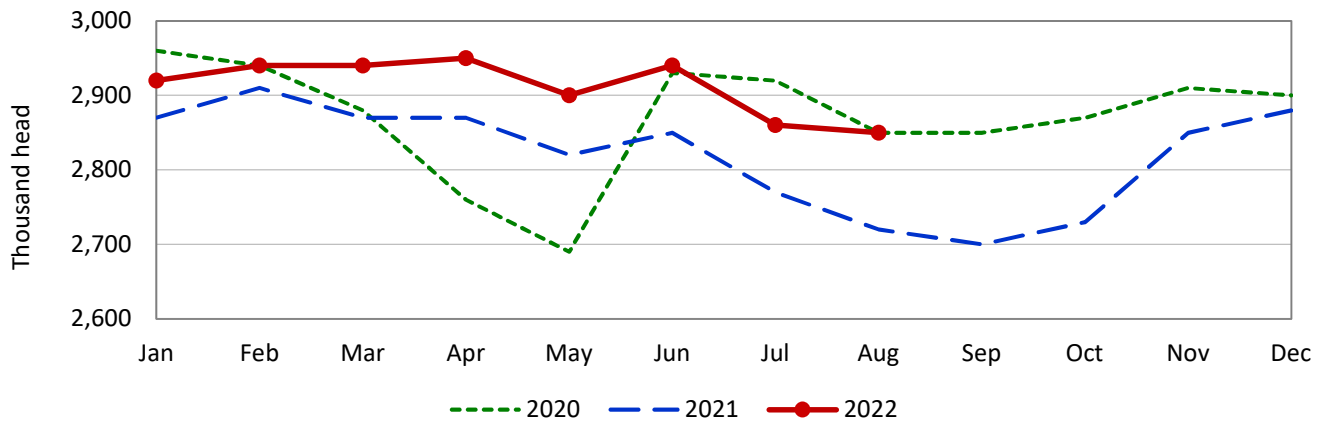
Contact: Jenna Bates or Carol Pittman

This report contains results from the August 2022 Cattle on Feed Survey collected during the first two weeks of August. Data provided by Oklahoma and Texas producers are the foundation of the estimates made for the Southern Plains region. We would like to thank all producers who responded to the survey. Results from the next monthly survey will be made available on September 23, 2022.

Cattle and calves on feed for slaughter market in **Texas** feedlots with capacity of 1,000 head or more totaled 2.85 million head on August 1, 2022, up 5 percent from a year ago. Producers placed 395 thousand head in commercial feedlots during July, up 7 percent from a year ago. Texas commercial feeders marketed 390 thousand head during July, down 5 percent from 2021.

On August 1, there were 2.54 million head of cattle and calves on feed in the Northern High Plains, 89 percent of the state's total. The number on feed across the area was up 5 percent from last year but down 1 percent from the July 1 total. July placements in the Northern High Plains totaled 352 thousand head, up 2 percent from the June total. Marketings were down 13 percent from last month at 353 thousand head.

## Texas Cattle on Feed Inventory

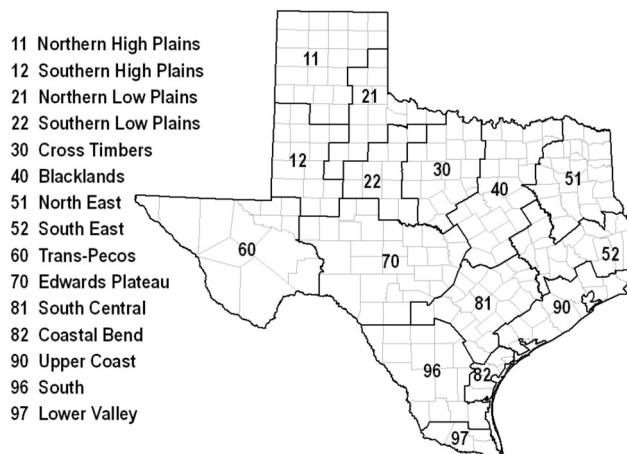


## Texas Cattle and Calves on Feed in 1,000+ Capacity Feedlots, by District

Cattle and Calves	District 11	District 12	District 21	District 70	District 81	District 96	Other districts	State total
	1,000 head	1,000 head	1,000 head	1,000 head	1,000 head	1,000 head	1,000 head	1,000 head
On feed July 1, 2022 <sup>1</sup>	2,550	142	49	13	26	42	38	2,860
Placed on feed during July	352	25	6	2	1	6	3	395
Fed cattle marketed during July	353	18	3	2	4	7	3	390
Other disappearance during July <sup>2</sup>	14	1	0	0	0	0	0	15
On feed August 1, 2022 <sup>1</sup>	2,535	148	52	13	23	41	38	2,850

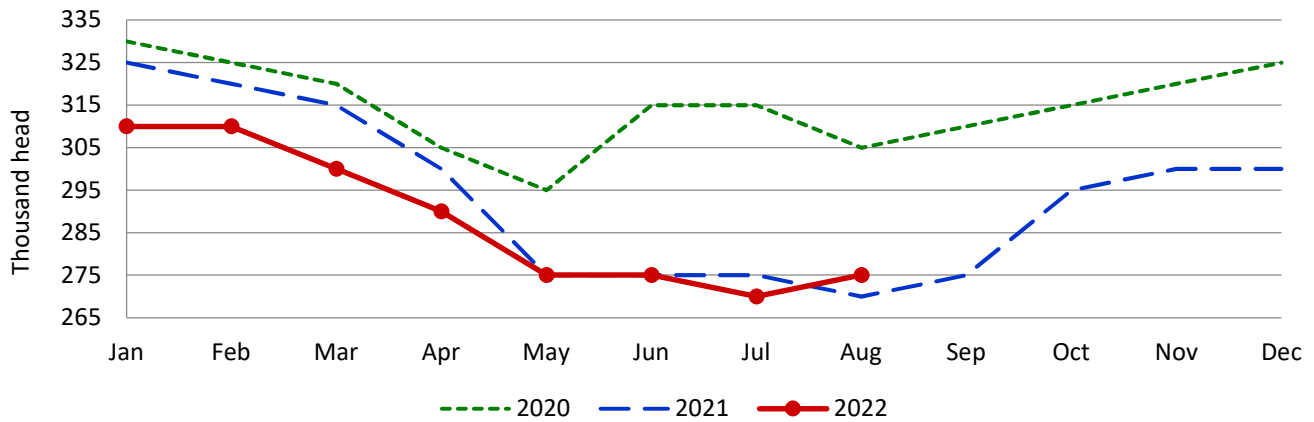
<sup>1</sup> Cattle and calves on feed are animals for slaughter market being fed a ration of grain or other concentrates and are expected to produce a carcass that will grade select or better.

<sup>2</sup> Included death losses, movement from feedlots to pasture and shipments to other feedlots for further feeding.



Cattle and calves on feed for slaughter market in **Oklahoma** feedlots with capacity of 1,000 head or more totaled 275 thousand head on August 1, 2022, up 2 percent from a year ago. Producers placed 48 thousand head in commercial feedlots during July, up 26 percent from a year ago. Oklahoma commercial feeders marketed 42 thousand head during July, unchanged from 2021. Other disappearance during July totaled 1 thousand head, unchanged from a year ago.

### Oklahoma Cattle on Feed Inventory



### Cattle and Calves: Placements, Marketings, Other Disappearance and Inventory in 1,000+ Capacity Feedlot

State	Cattle and Calves									
	On feed July 1		Placed on feed during July		Marketed during July		Other Disappearance during July		On feed August 1	
	2021	2022	2021	2022	2021	2022	2021	2022	2021	2022
	<i>1,000 head</i>	<i>1,000 head</i>	<i>1,000 head</i>	<i>1,000 head</i>	<i>1,000 head</i>	<i>1,000 head</i>	<i>1,000 head</i>	<i>1,000 head</i>	<i>1,000 head</i>	<i>1,000 head</i>
Arizona.....	275	280	22	22	22	22	1	1	274	279
California.....	540	560	64	50	56	59	8	6	540	545
Colorado.....	1,060	1,060	160	160	175	175	5	5	1,040	1,040
Idaho.....	280	280	38	31	41	35	2	1	275	275
Iowa.....	600	580	56	56	53	64	3	2	600	570
Kansas.....	2,450	2,350	440	450	470	440	10	10	2,410	2,350
Minnesota.....	100	90	11	10	15	14	1	1	95	85
Nebraska.....	2,290	2,370	435	445	515	485	10	10	2,200	2,320
<b>Oklahoma.....</b>	<b>275</b>	<b>270</b>	<b>38</b>	<b>48</b>	<b>42</b>	<b>42</b>	<b>1</b>	<b>1</b>	<b>270</b>	<b>275</b>
South Dakota.....	200	170	21	26	25	30	1	1	195	165
<b>Texas.....</b>	<b>2,770</b>	<b>2,860</b>	<b>370</b>	<b>395</b>	<b>410</b>	<b>390</b>	<b>10</b>	<b>15</b>	<b>2,720</b>	<b>2,850</b>
Washington.....	195	200	30	28	34	27	1	1	190	200
Other States.....	260	270	48	44	41	42	2	2	265	270
United States.....	11,295	11,340	1,733	1,765	1,899	1,825	55	56	11,074	11,224

### Cattle on Feed: Number Placed on Feed by Weight Group, 1,000+ Capacity Feedlots<sup>1</sup>

State	During July 2021					
	Under 600 lbs	600-699 lbs	700-799 lbs	800-899 lbs	900+ lbs <sup>2</sup>	Total
	<i>1,000 head</i>	<i>1,000 head</i>	<i>1,000 head</i>	<i>1,000 head</i>	<i>1,000 head</i>	<i>1,000 head</i>
Colorado.....	35	25	35	35	30	160
Kansas.....	55	70	145	115	55	440
Nebraska.....	35	45	95	150	110	435
<b>Texas.....</b>	<b>155</b>	<b>80</b>	<b>75</b>	<b>45</b>	<b>15</b>	<b>370</b>
Other States.....	95	35	60	78	60	328
United States.....	375	255	410	423	270	1,733
State	During July 2022					
	Under 600 lbs	600-699 lbs	700-799 lbs	800-899 lbs	900+ lbs <sup>2</sup>	Total
	<i>1,000 head</i>	<i>1,000 head</i>	<i>1,000 head</i>	<i>1,000 head</i>	<i>1,000 head</i>	<i>1,000 head</i>
Colorado.....	35	30	35	35	25	160
Kansas.....	65	80	140	110	55	450
Nebraska.....	35	50	100	145	115	445
<b>Texas.....</b>	<b>185</b>	<b>85</b>	<b>70</b>	<b>40</b>	<b>15</b>	<b>395</b>
Other States.....	90	35	55	75	60	315
United States.....	410	280	400	405	270	1,765

<sup>1</sup> Oklahoma is included in *Other States*.

<sup>2</sup> For the U.S., the 900+ category represents the sum of 900-999 pound and 1,000+ pound weight groups.