



ANNUAL CATTLE REVIEW

OKLAHOMA AND U.S. INVENTORY

Data Source: USDA-NASS *January Cattle Report*

Oklahoma's January 1, 2022 inventory of all cattle and calves, at 5.20 million head, was down 100 thousand from the January 1, 2021 inventory. All cows and heifers that calved, at 2.17 million head, were down 1 percent. Bulls, at 170 thousand head, were unchanged from January 1, 2021. All heifers over 500 pounds, at 950 thousand head, were up 1 percent from last year. Steers over 500 pounds, at 1.01 million head, were down 6 percent from January 1, 2021. The 2021 annual calf crop for Oklahoma, at 1.92 million head, was down 2 percent from the previous year.

The United States all cattle and calves inventory went down 2 percent; totaling 91.9 million head on January 1, 2022. All cows and heifers that have calved, at 39.5 million head, were down 2 percent from the 40.3 million head on January 1, 2021. The 2021 annual calf crop for the United States was estimated at 35.1 million head, down 1 percent from the previous year.

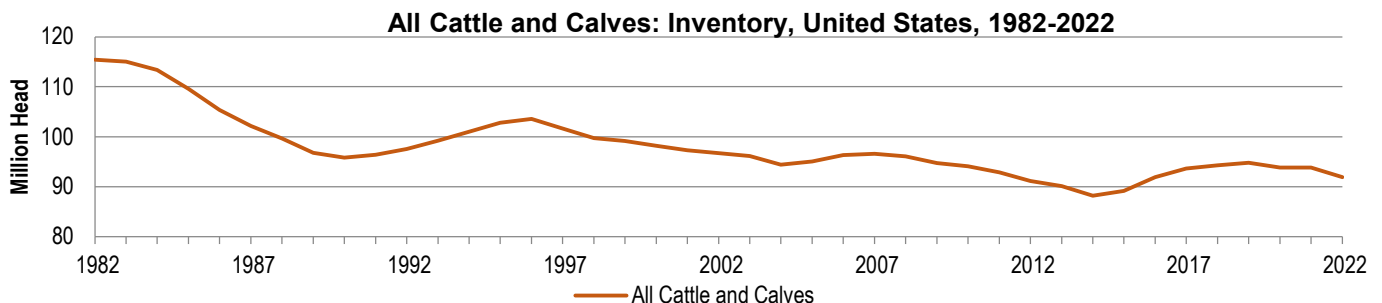
Cattle and Calves: Inventory by Class and Calf Crop, Oklahoma and United States, January 1, 2021-2022

Class	Oklahoma			United States ¹		
	2021	2022	Percent of Previous Year	2021	2022	Percent of Previous Year
	<i>1,000 Head</i>	<i>1,000 Head</i>	<i>Percent</i>	<i>1,000 Head</i>	<i>1,000 Head</i>	<i>Percent</i>
All Cattle and Calves	5,300	5,200	98	93,790	91,902	98
Cows and Heifers That Have Calved	2,200	2,170	99	40,286	39,500	98
Beef Cows	2,159	2,131	99	30,844	30,125	98
Milk Cows	41	39	95	9,442	9,375	99
Heifers 500 Pounds and Over	940	950	101	20,200	19,776	98
Beef Cow Replacements	410	410	100	5,803	5,612	97
Milk Cow Replacements	20	20	100	4,609	4,451	97
Other Heifers	510	520	102	9,789	9,714	99
Steers 500 Pounds and Over	1,080	1,010	94	16,788	16,580	99
Bulls 500 Pounds and Over	170	170	100	2,211	2,110	95
Calves Under 500 Pounds	910	900	99	14,305	13,936	97
Cattle on Feed	335	315	94	14,667	14,693	100
Calf Crop ²	1,950	1,920	98	35,496	35,085	99
Born January 1 - June 30	(NA)	(NA)	(NA)	25,850	25,630	99
Born July 1 - December 31	(NA)	(NA)	(NA)	9,646	9,455	98

(NA) Not available.

¹Totals may not add due to rounding.

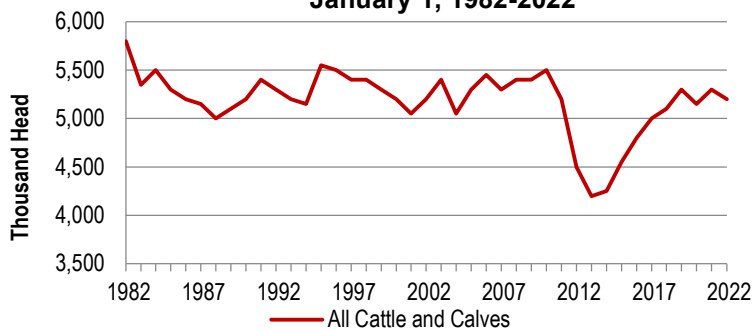
² Calf crop refers to calves born during the previous year.



OKLAHOMA AND U.S. INVENTORY (CONTINUED)

Data Source: USDA-NASS *January Cattle Report*

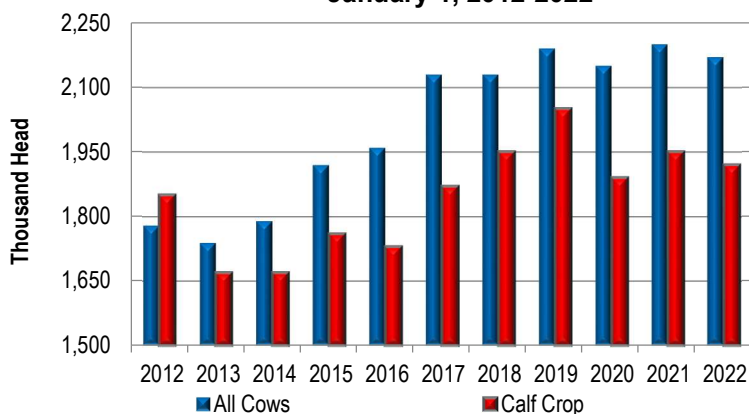
All Cattle and Calves: Oklahoma, January 1, 1982-2022



Oklahoma's January 1, 2022 inventory of all cattle and calves, at 5.20 million head, was down 2 percent from the previous year.

Oklahoma continues to rank in the top five based on all cattle and calves inventory. The top five states as of January 1, 2022 inventory levels are as follows: Texas, Nebraska, Kansas, Oklahoma, and California.

All Cows and Calf Crop: Oklahoma, January 1, 2012-2022



January 1, 2021 and 2022 Inventory for Top Five States

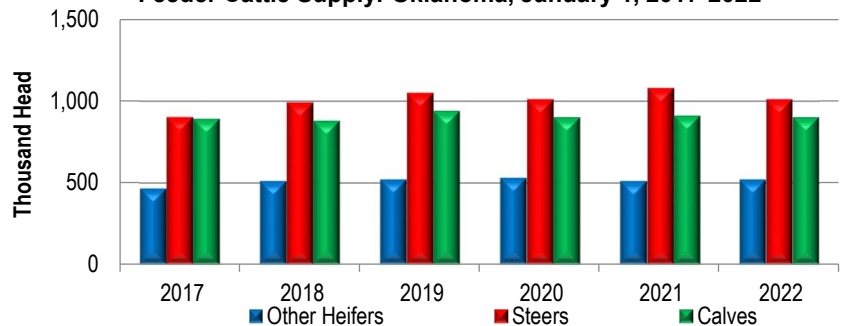
Rank	State	2021	2022	Percent of previous year
1	Texas	13,100	12,700	97
2	Nebraska	6,850	6,800	99
3	Kansas	6,550	6,500	99
4	Oklahoma	5,300	5,200	98
4	California	5,150	5,200	101

OKLAHOMA FEEDER SUPPLY AND PASTURE CONDITION

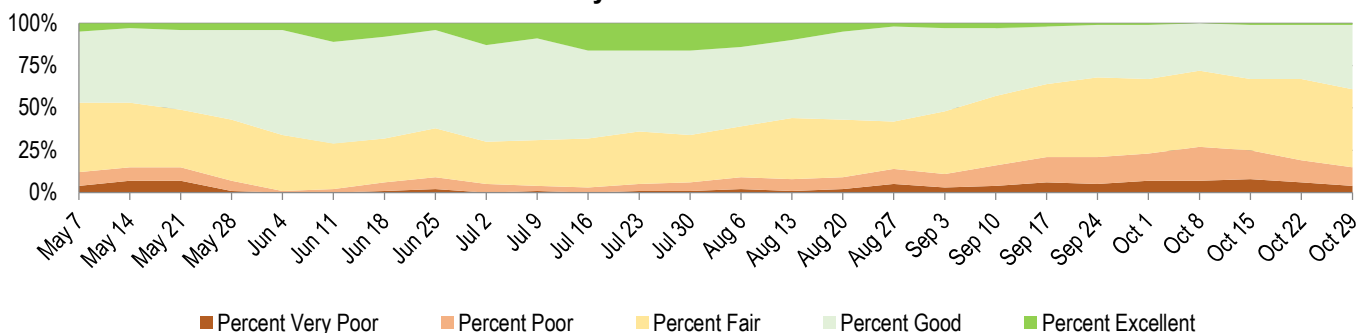
Data Source: USDA-NASS *January Cattle and Weekly Crop Progress Reports*

Total Oklahoma feeder cattle supply consisting of other heifers, steers, and calves is down 2 percent from one year ago. Other heifers over 500 pounds, at 520 thousand head, were up 2 percent from last year. Steers over 500 pounds, at 1.01 million head, were down 6 percent from January 1, 2021. Calves less than 500 pounds, at 900 thousand head, were down 1 percent from a year ago.

Feeder Cattle Supply: Oklahoma, January 1, 2017-2022



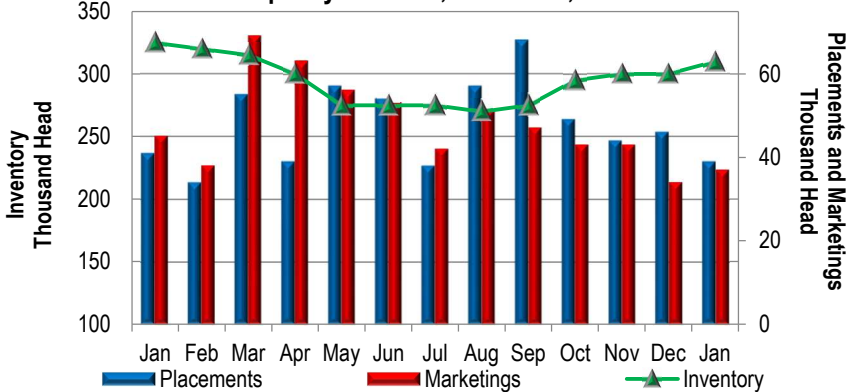
2021 Weekly Pasture Condition: Oklahoma



OKLAHOMA CATTLE ON FEED

Data Source: USDA-NASS monthly *Cattle on Feed Report*

**Cattle on Feed: Inventory, Placements, Marketings,
1000+ Head Capacity Feedlots, Oklahoma, 2021-2022**



January 1, 2022 cattle on feed inventory for Oklahoma totaled 310 thousand head in feedlots with capacity of 1,000 or more head, up 3 percent from the previous month and down 5 percent from January 1, 2021.

Placements during 2021 dropped slightly to 582 thousand head compared to 583 thousand head during 2020. Marketings of fed cattle for slaughter increased 2 percent from 575 thousand head in 2020 to 584 thousand head in 2021.

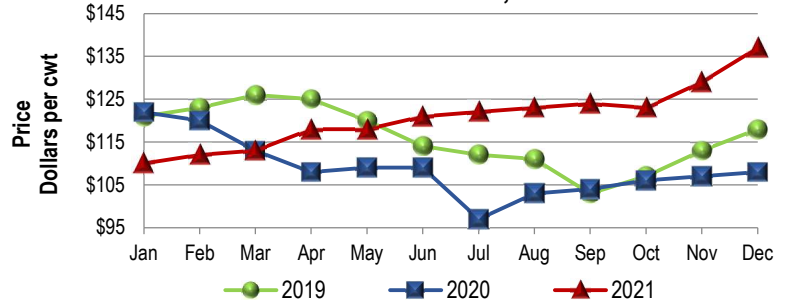
U.S. MONTHLY CATTLE PRICES

Data Source: USDA-NASS monthly *Agricultural Prices Report*

Nationally, prices started January 2021 at \$110 per hundredweight, \$12 lower than January 2020, closing out the year at \$137 per hundredweight.

Prices increased through May 2021, then dropped Jun - Sep and began to rebound toward the end of the year.

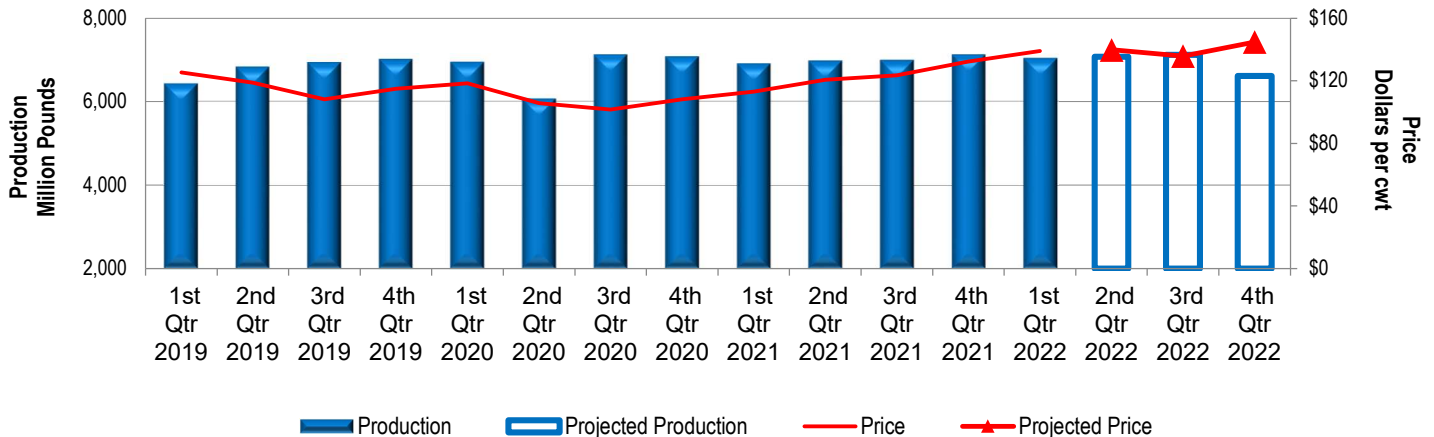
**Cattle 500+ Pounds: Monthly Prices Received,
United States, 2019-2021**



U.S. PRODUCTION AND PRICE OUTLOOK

Data Source: USDA-WAOB *World Agriculture Supply and Demand Estimates Report*

**Beef Production and Price by Quarter:
United States, 2019-2021, Projected 2022**



Welcome to the 2022 edition of the Annual Cattle Review. Thanks to all participants in the cattle industry for their continued support and cooperation – especially the producers who provide data for the bi-annual Cattle and monthly Cattle on Feed surveys. Without their commitment and participation, this report would not be possible. A random sample of United States cattle producers was surveyed in early January. Survey procedures ensured that all cattle producers, regardless of size, had a chance to be included in the survey.

Though many of the statistics in this publication can be accessed through our website on a regular basis (www.nass.usda.gov/Publications), this review will be issued annually following the release of the USDA-NASS *Meat Animals Production, Disposition, and Income* annual summary each April.

Please feel free to contact our office with any comments or questions you may have. I hope you find this information useful!

Troy Marshall
State Statistician
Oklahoma Field Office

OUR CONFIDENTIALITY PLEDGE

● **Names, addresses, and personal identifiers are fully protected by NASS with the force of law.** Title 7, U.S. Code, Section 2276 and the Confidential Information Protection and Statistical Efficiency Act *prohibit public disclosure* of individual information. ● **Only authorized** persons working for NASS as employees or sworn agents, who are subject to fines and imprisonment for unauthorized disclosure, can access individual record data and only for approved official purposes. ● **Data security** is a top priority during preparation of NASS reports. ● Published statistics from NASS surveys and censuses *will not* disclose reported data from an individual ● **Data are protected** from cybersecurity threats. Cybersecurity Enhancement Act of 2015, your data are further protected by the Department of Homeland Security (DHS) through cybersecurity monitoring of the systems that transmit your data.