



# Nevada Crop Progress & Condition

Pacific Regional Office · 650 Capitol Mall, Suite 6-100 · Sacramento, CA 95814 · (916) 738-6600 · [www.nass.usda.gov/nv](http://www.nass.usda.gov/nv)

Week Ending September 1, 2024

Released September 3, 2024

## Weather Summary

The average low temperatures for Nevada ranged from 32 degrees in Ely to 66 degrees in Las Vegas. The average high temperatures ranged from 86 degrees in Eureka to 104 degrees in Las Vegas. No precipitation was observed at any of the reporting stations in Nevada.

## Crops Summary

Days Suitable for Fieldwork: 7.0 days. Topsoil Moisture: 40% very short, 15% short, 35% adequate, and 10% surplus. Subsoil Moisture: 30% very short, 40% short, 25% adequate, and 5% surplus. Pasture and Range Condition: 30% very poor, 10% poor, 15% fair, 25% good, and 20% excellent. The third cutting of **alfalfa** was mostly complete. Some growers began cutting water to corn fields to dry down the crop for silage harvest. The weather was very dry, with no precipitation reported during the week. Temperatures cooled slightly but rose again towards the end of the week.

## Weather for the Week of 8/26/2024 through 9/1/2024

Station	Temperature				Precipitation <sup>2</sup>
	High	Low	Average	Departure from Normal <sup>1</sup>	
	-- Degrees Fahrenheit --				
Reno	95	48	73	1	0.00
Elko	94	36	64	-2	0.00
Ely	89	32	63	-2	0.00
Winnemucca	91	38	63	-5	0.00
Eureka	86	37	62	-3	0.00
Tonopah	92	47	71	0	0.00
Las Vegas	104	66	88	-2	0.00

<sup>1</sup> Normal periods 1990-2020 used in departure from normal calculations.

<sup>2</sup> Rain or melted snow/ice.

Data retrieved from NOAA and NWS. Calculated by USDA NASS. All rights reserved.

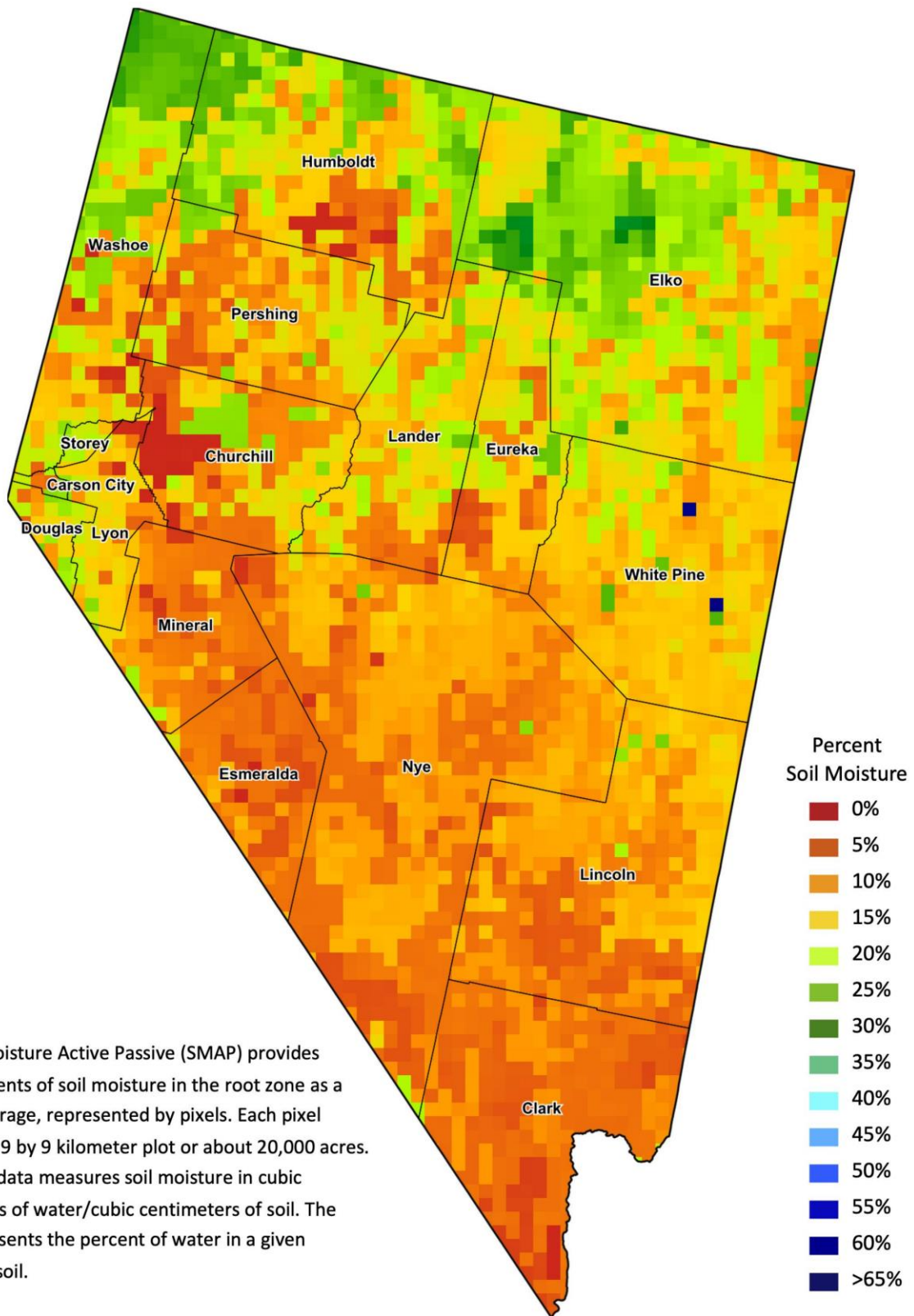
## Drought Conditions from the U.S. Drought Monitor as of 8/27/2024

Time	Percent of Land in Drought Rating						Drought Severity (DSCI)
	None	D0	D1	D2	D3	D4	
Current	1.40	92.96	4.73	0.91	0.00	0.00	105
Last Week	21.57	72.79	4.73	0.91	0.00	0.00	85
3 Months Ago	96.98	3.02	0.00	0.00	0.00	0.00	3
One Year Ago	94.36	2.37	3.27	0.00	0.00	0.00	9

The U.S. Drought Monitor is jointly produced by the National Drought Mitigation Center at the University of Nebraska-Lincoln, the United States Department of Agriculture, and the National Oceanic and Atmospheric Administration.  
[droughtmonitor.unl.edu/CurrentMap/StateDroughtMonitor.aspx?NV](http://droughtmonitor.unl.edu/CurrentMap/StateDroughtMonitor.aspx?NV)



# Nevada Soil Moisture Map for the Week of August 19 - 25, 2024



The Soil Moisture Active Passive (SMAP) provides measurements of soil moisture in the root zone as a weekly average, represented by pixels. Each pixel represents 9 by 9 kilometer plot or about 20,000 acres. The SMAP data measures soil moisture in cubic centimeters of water/cubic centimeters of soil. The scale represents the percent of water in a given volume of soil.