



Nevada Crop Progress & Condition

Pacific Regional Office · 650 Capitol Mall 6-100 · Sacramento, CA 95812-1258 · (916) 738-6600 · www.nass.usda.gov/nv

Week Ending November 28, 2021

Released November 29, 2021

This is the final weekly publication that will be published in 2021. For December 2021 through March 2022, USDA NASS will be publishing monthly national reports titled “Crop Progress – State Stories”. These monthly reports can be found here: usda.library.cornell.edu/concern/publications/fq977t77k?locale=en

Weather Summary

The average lows for Nevada ranged from 6 degrees in Ely to 41 degrees in Las Vegas. The average highs ranged from 56 degrees in Eureka to 72 degrees in Las Vegas. No precipitation was observed at any of the reporting stations in Nevada.

Crops Summary

Days Suitable for Fieldwork: 7.0 days. Topsoil Moisture: 15% very short, 15% short, and 70% adequate. Subsoil Moisture: 35% very short, 30% short, and 35% adequate. Pasture and Range Condition: 20% Very Poor, 35% Poor, 40% Fair, and 5% Good.

Week of 11/22/2021 through 11/28/2021

Station	Temperature				Precipitation ²
	High	Low	Average	Departure from Normal ¹	
Reno	62	21	42	3	0.00
Elko	58	11	34	3	0.00
Ely	64	6	34	4	0.00
Winnemucca	60	15	37	3	0.00
Eureka	56	15	35	4	0.00
Tonopah	63	18	40	4	0.00
Las Vegas	72	41	56	4	0.00

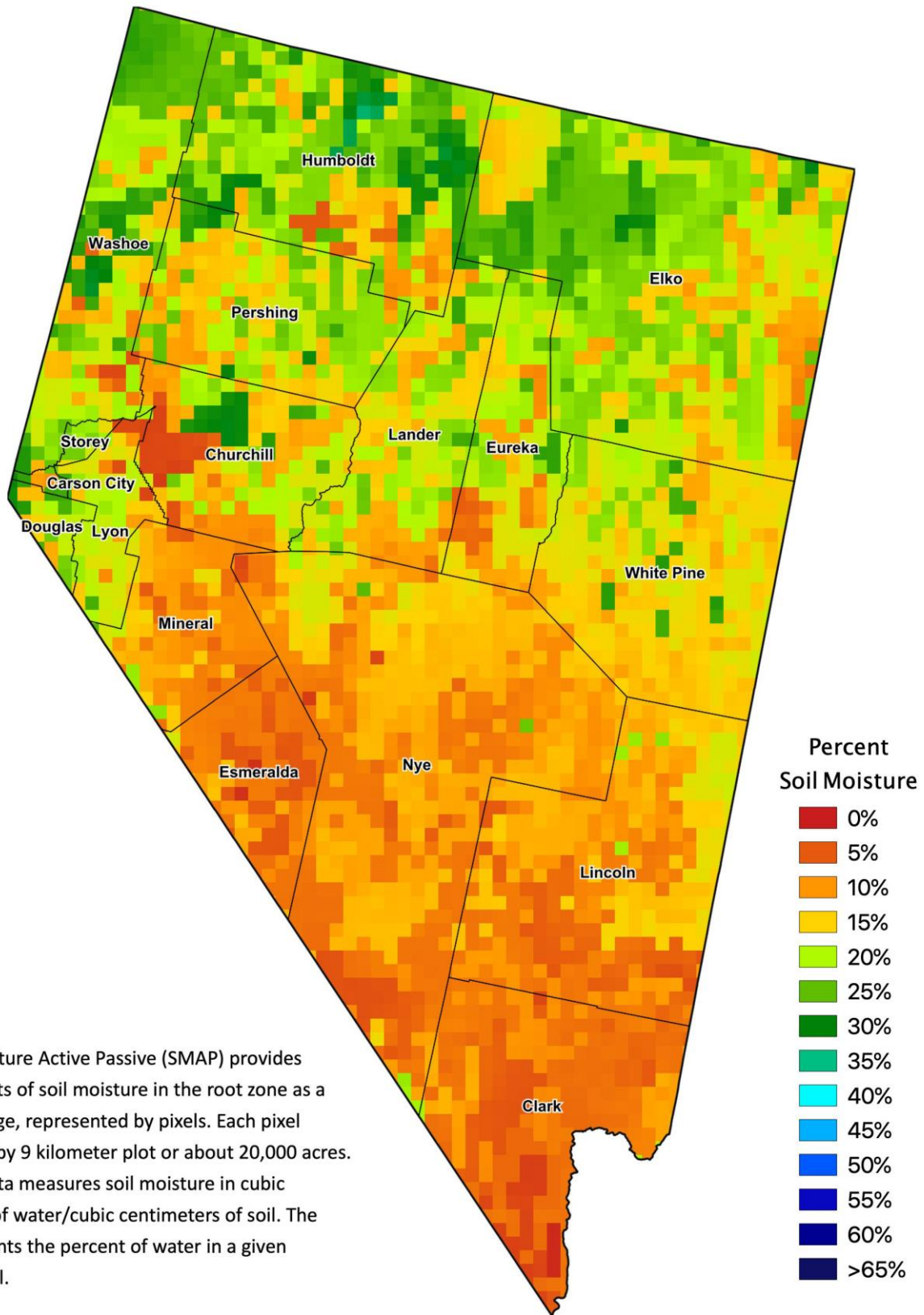
¹ Normal periods 1980-2010 used in departure from normal calculations.

² Rain or melted snow/ice.

Data retrieved from NOAA and NWS. Calculated by USDA NASS.
All rights reserved.



Nevada Soil Moisture Map for the Week of November 15 - 21, 2021



The Soil Moisture Active Passive (SMAP) provides measurements of soil moisture in the root zone as a weekly average, represented by pixels. Each pixel represents 9 by 9 kilometer plot or about 20,000 acres. The SMAP data measures soil moisture in cubic centimeters of water/cubic centimeters of soil. The scale represents the percent of water in a given volume of soil.