



# Nevada Crop Progress & Condition

Pacific Regional Office · 650 Capitol Mall 6-100 · Sacramento, CA 95812-1258 · (916) 738-6600 · [www.nass.usda.gov/nv](http://www.nass.usda.gov/nv)

Week Ending September 26, 2021

Released September 27, 2021

## Weather Summary

The average lows for Nevada ranged from 25 degrees in Ely to 65 degrees in Las Vegas. The average highs ranged from 82 degrees in Ely to 98 degrees in Las Vegas. No precipitation was observed at any of the reporting stations in Nevada.

## Crops Summary

Days Suitable for Fieldwork: 7.0 days. Topsoil Moisture: 40% very short, 20% short, and 40% adequate. Subsoil Moisture: 40% very short, 25% short, and 35% adequate. Pasture and Range Condition: 45% Very Poor, 30% Poor, and 25% Fair.

### Week of 09/20/2021 through 09/26/2021

Station	Temperature				Precipitation <sup>2</sup>
	High	Low	Average	Departure from Normal <sup>1</sup>	
Reno	89	45	67	4	0.00
Elko	85	30	59	3	0.00
Ely	82	25	56	2	0.00
Winnemucca	88	37	60	2	0.00
Eureka	84	33	58	2	0.00
Tonopah	85	44	65	3	0.00
Las Vegas	98	65	82	2	0.00

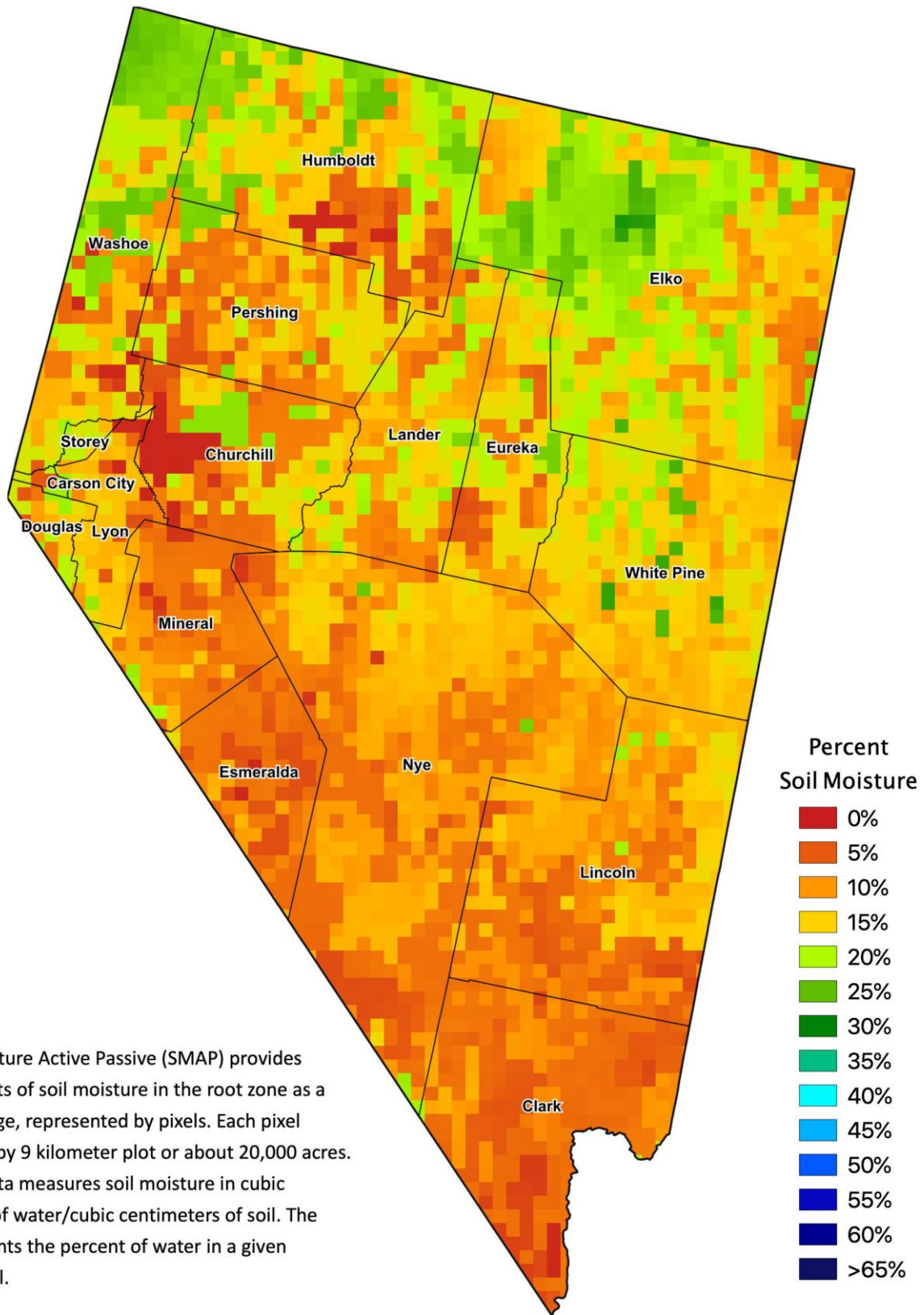
<sup>1</sup> Normal periods 1980-2010 used in departure from normal calculations.

<sup>2</sup> Rain or melted snow/ice.

Data retrieved from NOAA and NWS. Calculated by USDA NASS.  
All rights reserved.



# Nevada Soil Moisture Map for the Week of September 13 - 19, 2021



The Soil Moisture Active Passive (SMAP) provides measurements of soil moisture in the root zone as a weekly average, represented by pixels. Each pixel represents 9 by 9 kilometer plot or about 20,000 acres. The SMAP data measures soil moisture in cubic centimeters of water/cubic centimeters of soil. The scale represents the percent of water in a given volume of soil.