



# Nevada Crop Progress & Condition

Pacific Regional Office · 650 Capitol Mall 6-100 · Sacramento, CA 95812-1258 · (916) 738-6600 · [www.nass.usda.gov/nv](http://www.nass.usda.gov/nv)

Week Ending June 27, 2021

Released June 28, 2021

## Weather Summary

The average lows for Nevada ranged from 40 degrees in Ely to 76 degrees in Las Vegas. The average highs ranged from 92 degrees in Eureka to 108 degrees in Las Vegas. Precipitation for Nevada ranged from 0.01 inches in Las Vegas, 0.05 inches in Reno, 0.06 inches in Eureka, and 0.15 inches in Ely.

## Crops Summary

Days Suitable for Fieldwork: 7.0 days. Topsoil Moisture: 35% very short, 25% short, and 40% adequate. Subsoil Moisture: 35% very short, 30% short, and 35% adequate. Pasture and Range Condition: 35% Very Poor, 25% Poor, and 40% Fair.

### Week of 06/21/2021 through 06/27/2021

Station	High	Low	Average	Departure from Normal <sup>1</sup>	Precipitation <sup>2</sup>
Reno	99	58	78	8	0.05
Elko	98	45	73	8	0.00
Ely	96	40	67	4	0.15
Winnemucca	100	51	78	10	0.00
Eureka	92	47	71	8	0.06
Tonopah	97	54	75	4	0.00
Las Vegas	108	76	92	3	0.01

<sup>1</sup> Normal periods 1980-2010 used in departure from normal calculations.

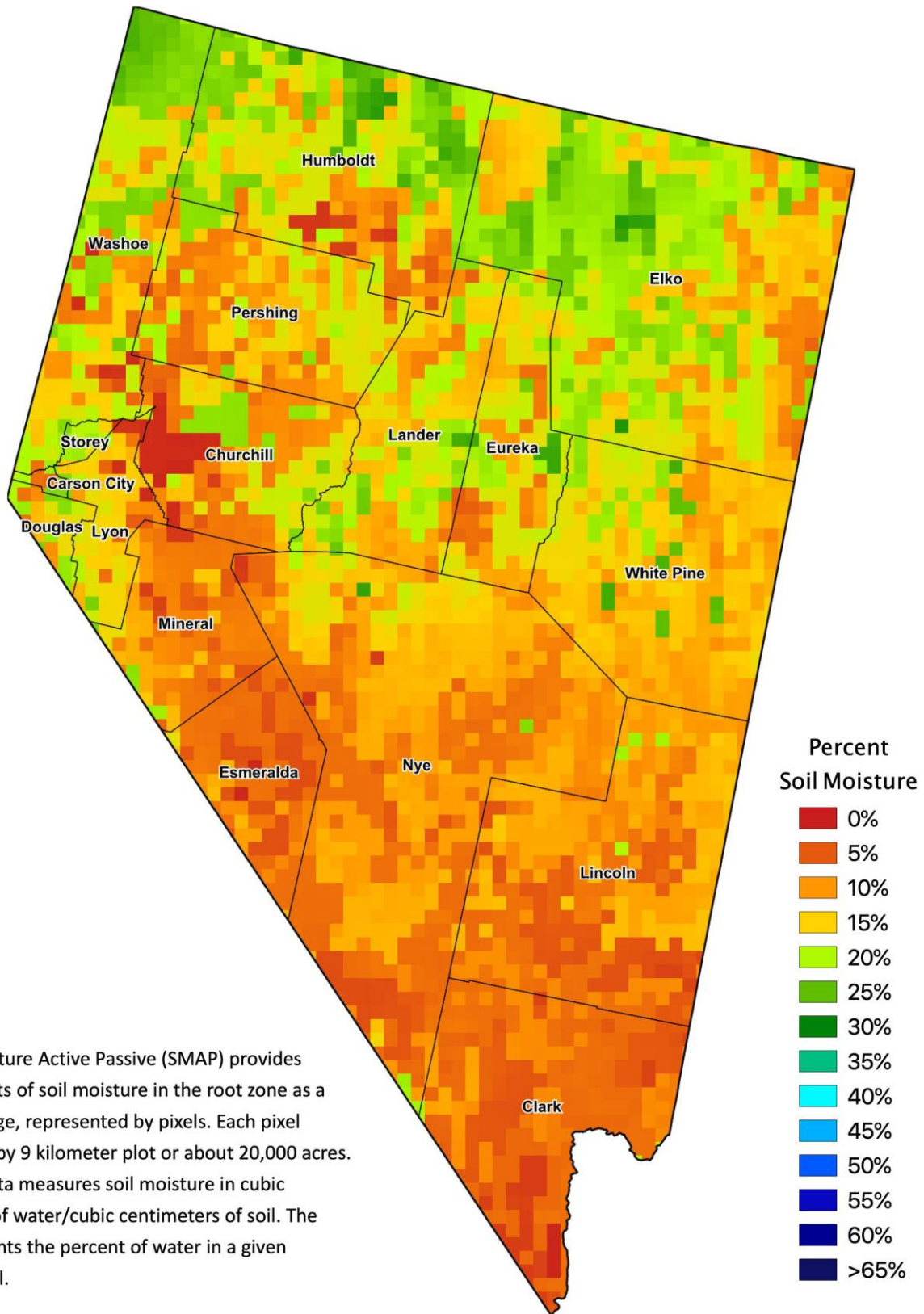
<sup>2</sup> Rain or melted snow/ice.

Data retrieved from NOAA and NWS. Calculated by USDA NASS.

All rights reserved.



# Nevada Soil Moisture Map for the Week of June 14 - 20, 2021



The Soil Moisture Active Passive (SMAP) provides measurements of soil moisture in the root zone as a weekly average, represented by pixels. Each pixel represents 9 by 9 kilometer plot or about 20,000 acres. The SMAP data measures soil moisture in cubic centimeters of water/cubic centimeters of soil. The scale represents the percent of water in a given volume of soil.