



# 2023 MINNESOTA CROP PROGRESS REVIEW

The Crop Progress and Condition Report is made possible by the dedication of the many farmers, FSA, NRCS, Extension, and agribusiness personnel who provide information each week. Thank you for your help!

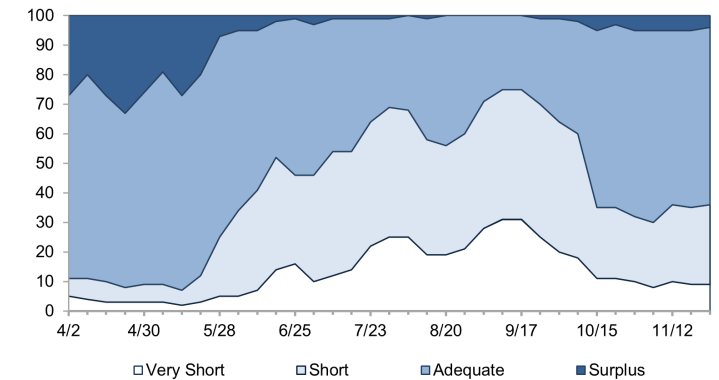
## Review of the 2023 Crop Year:

Minnesota fields were snow-covered for most of April, giving farmers an average of 0.6 days suitable for fieldwork per week, compared to 0.15 per week in April 2022. As of May 1, corn and soybeans were 10 and 3 percent planted respectively, in contrast to last year's May 1 progress of 0 percent for both crops. Days suitable rose in May and averaged 5.8 during June. Topsoil moisture was rated 91 percent adequate-or-surplus on April 30, compared to 93 percent adequate-or-surplus on May 1, 2022. Topsoil moisture remained high until late May and lack of precipitation had supplies dropping to a low of 25 percent adequate-or-surplus by September 10. On November 26, topsoil moisture was rated at 64 percent adequate-or-surplus, aided by late-season rain and snow. Crop conditions were considerably lower than last year, with most of the state's precipitation coming at the end of the season. By October 29, corn and soybeans were 75 percent and 94 percent harvested, respectively. This was similar to 2022 but ahead of average.

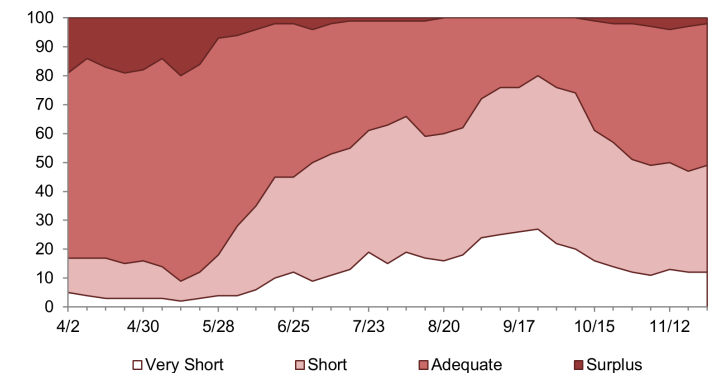
The average temperature in April was 38.3 degrees, 2.7 degrees warmer than in April 2022 but 3.2 degrees below the April 1991-2020 normal. Monthly temperatures from May through October were slightly warmer than normal.

The statewide precipitation total for April was 2.58 inches, compared with 3.72 inches in April 2022 and slightly above the 1991-2020 normal. May had 2.18 inches of precipitation, much lower than the 5.03 inches last May and more than an inch lower than normal. June and July were 1.74 and 1.6 inches drier than normal respectively. Precipitation for August was below average at 2.29 inches. September and October improved, with a combined 5.99 inches. For comparison, the September-October total for 2022 was 2.21 inches, and the 1991-2020 normal is 4.98 inches.

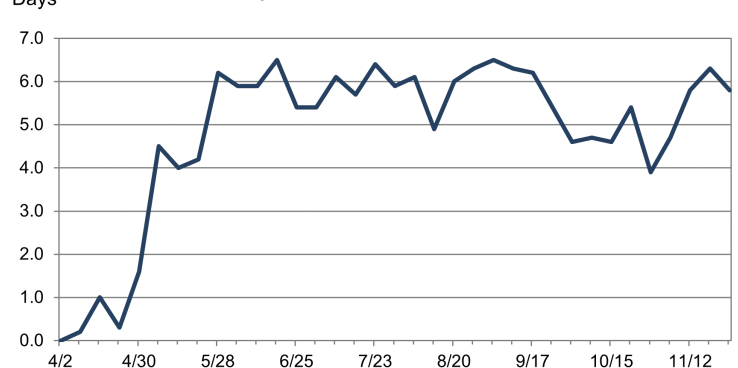
Topsoil Moisture Ratings - Minnesota State Average  
 April 2 - November 26, 2023



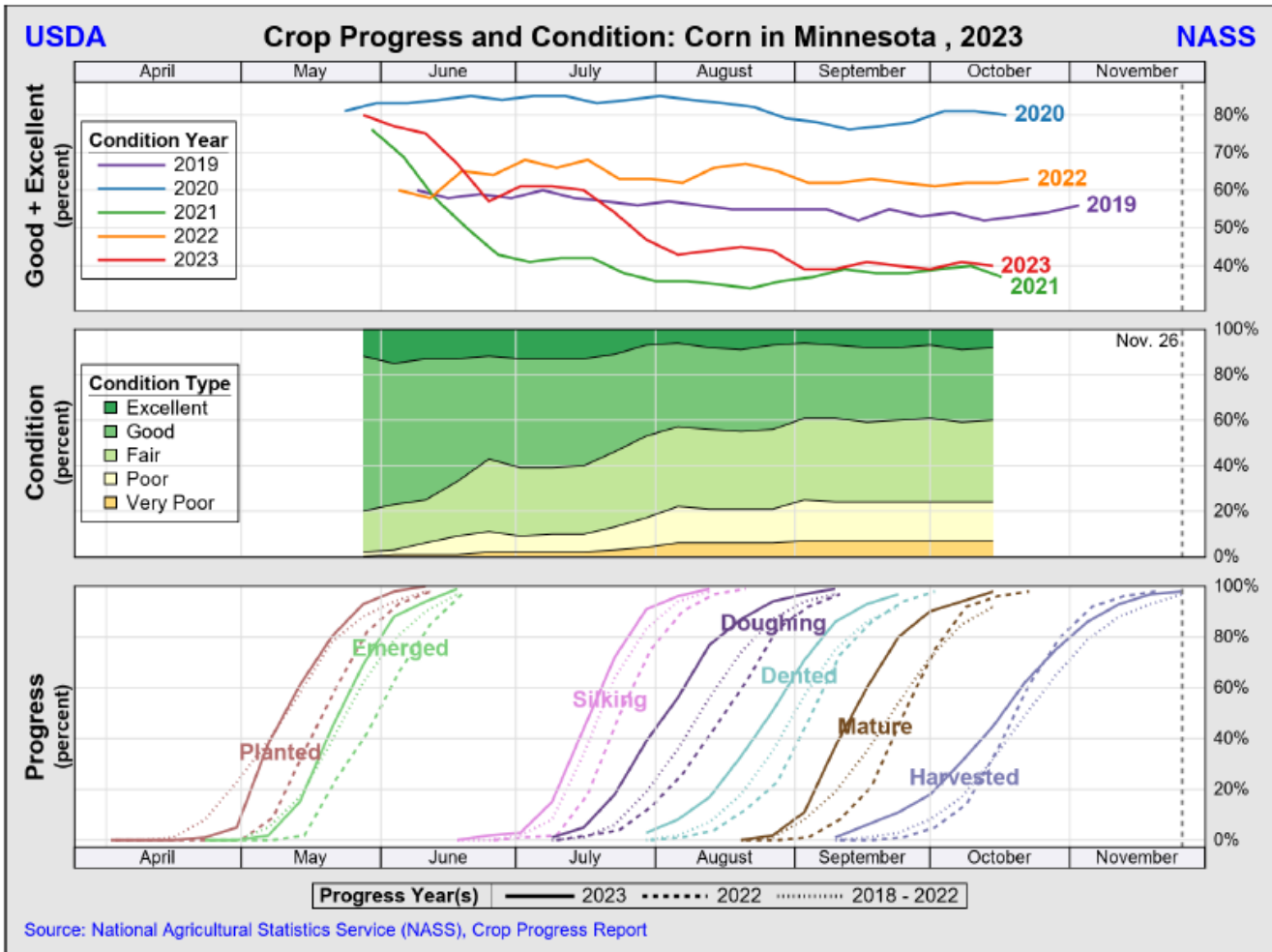
Subsoil Moisture Ratings - Minnesota State Average  
 April 2 - November 26, 2023



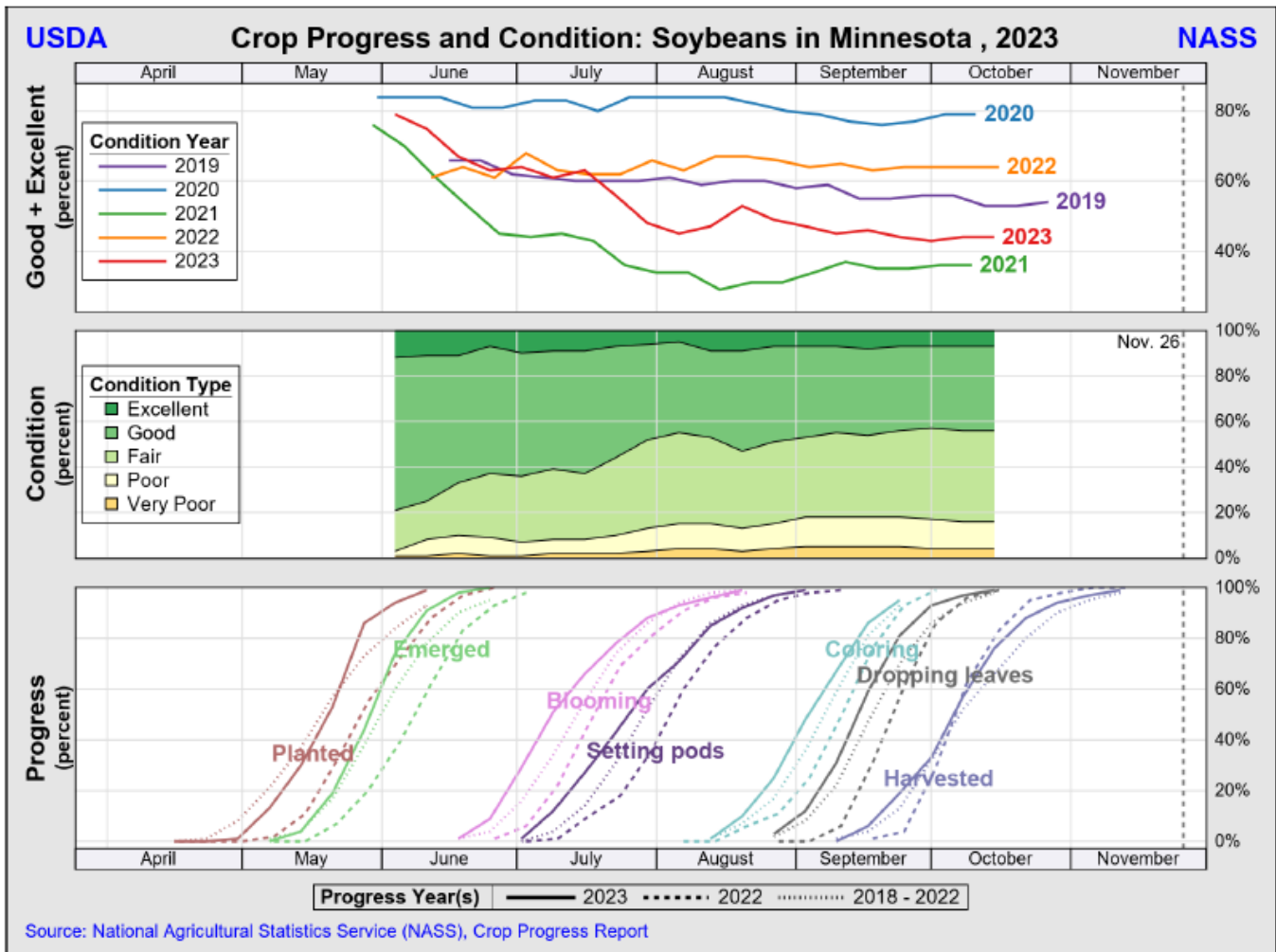
Days Suitable for Fieldwork - Minnesota State Average  
 April 2 - November 26, 2023



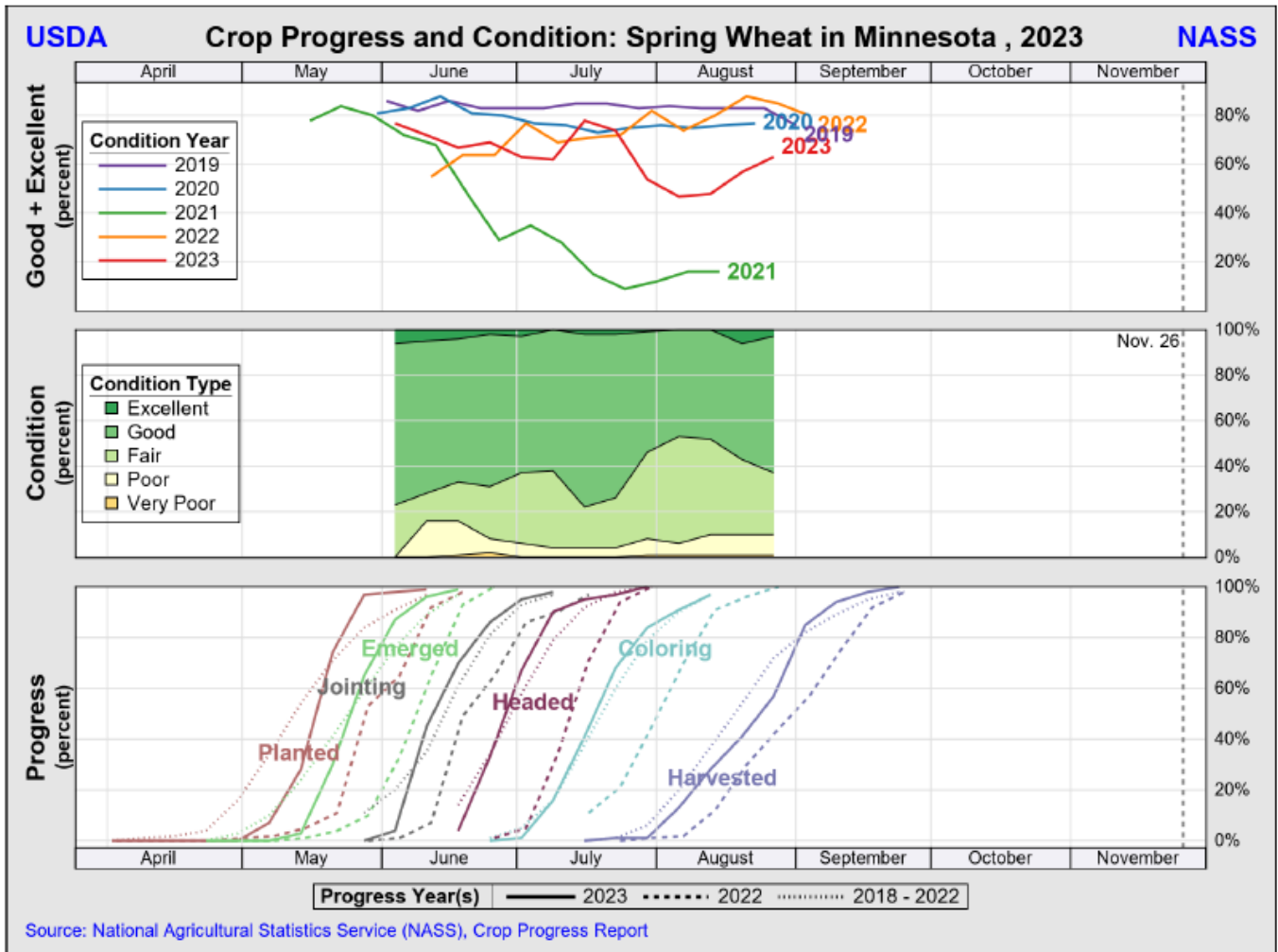
**Corn** planting started around the 3rd week of April and on the 14th of May was at 61 percent complete, close to the 5-year average of 58 percent. Progress stayed a few days ahead of average throughout the stage. By May 28 planting was 93 percent complete, about 6 days ahead average. Planting finished up in early June. Crop emergence began around May 2 and reached 94 percent on June 11, 4 days ahead of the 5-year average. Silking began around June 20 and by July 30 had reached 91 percent, about 4 days ahead of the 5-year average. Thirty-three percent of corn acres had reached the dent stage by August 20, and 93 percent by September 17. Corn harvested for silage was at 1 percent on August 13, and reached 95 percent on October 1. Ninety-eight percent of the corn crop had reached maturity by October 15, a week earlier than the 5-year average. Harvest was 6 percent complete by September 17, about two weeks ahead of last year's progress, and reached 97 percent by November 19, on pace with last year and a week ahead of the 5-year average. The first corn condition rating of the season, on May 28, showed 80 percent good to excellent. Conditions steadily declined the rest of the season with the last 2 months averaging 40 percent good to excellent.



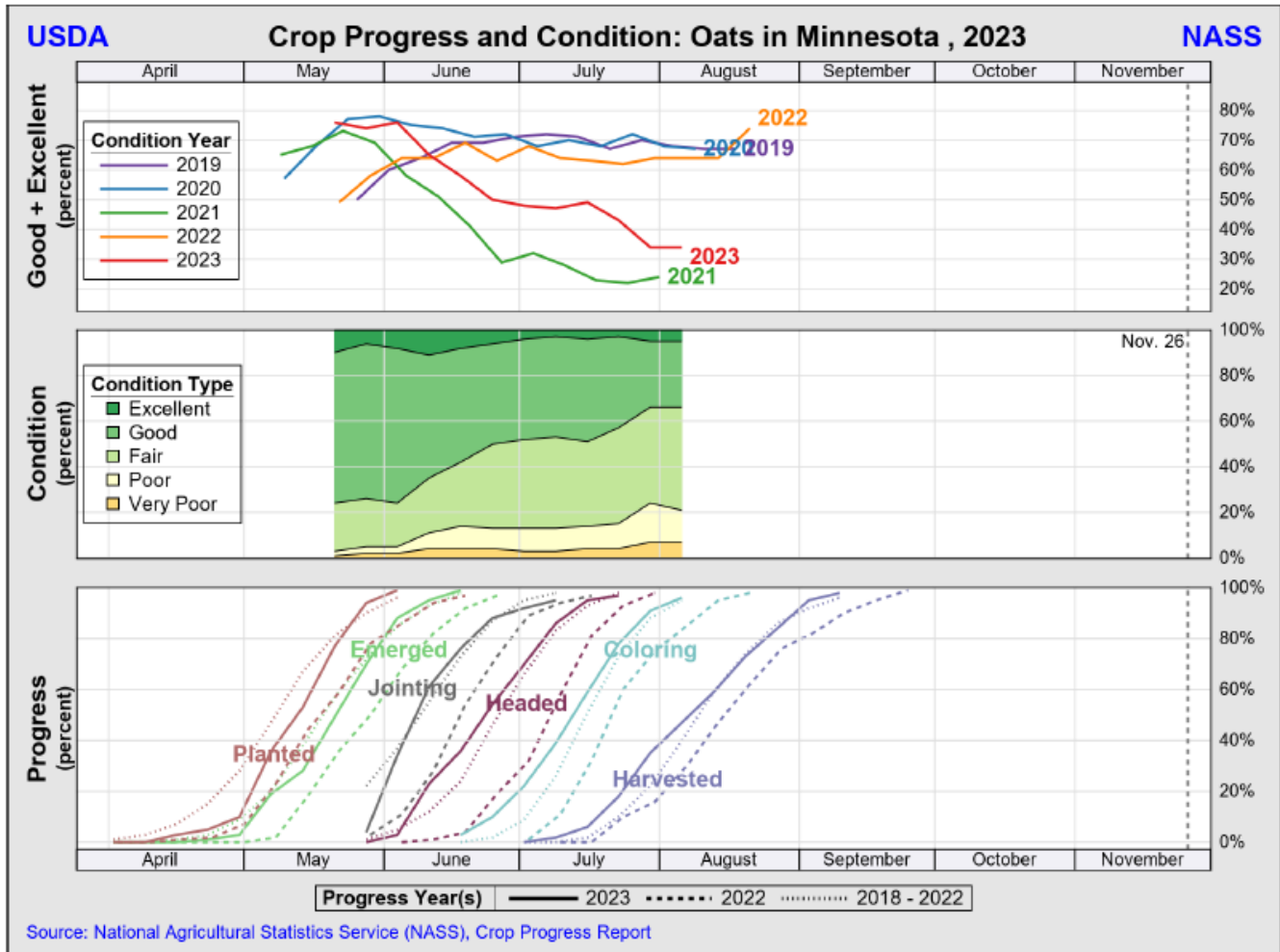
**Soybean** planting started the last week of April and on May 14th was at 30 percent complete, a few days behind the 5-year average of 37 percent. Planting progress reached 86 percent on May 28 and by June 11 was virtually complete at 99 percent, over a week ahead of average. Crop emergence began around May 7 and reached 91 percent on June 11, about a week ahead of the 5-year average. Eighty-eight percent of plants had bloomed by July 30, 1 day ahead of the 5-year average. By August 20, 92 percent of soybeans were setting pods, 1 day behind average. Ninety-three percent of soybeans were dropping leaves as of October 1, 6 days ahead of the 5-year average. Soybean harvest started in mid September with 33 percent harvested by October 1, a couple of days ahead of last year but almost equal to the 5-year average. By November 5 farmers had harvested 97 percent of their soybean acreage, reaching that number 8 days behind last year but 4 days ahead of the average. Condition ratings for the season started on June 6 with 79 percent rated good to excellent. Conditions steadily declined throughout the season, ending with a 43 percent good-to-excellent rating.



**Spring Wheat** seeding began later than usual, with planting at 7 percent on May 7. For comparison, the 5-year average for planting progress on May 7 is 34 percent, although last year planting had only reached 2 percent by this date. Farmers caught up as progress reached 97 percent on May 28, 2 weeks ahead of average. Emergence stayed about a week behind planting, with progress reaching 96 percent on June 11. Ninety percent of the crop was headed or beyond on July 9, about 6 days ahead of the average. By August 6, 91 percent of spring wheat had turned color. Harvest began in late July. Fifty-seven percent of the spring wheat acreage had been harvested by August 27, and 94 percent by September 10, 6 days ahead of the 5-year average. Spring wheat condition was first tracked on June 4, with a rating of 77 percent good to excellent. Conditions generally declined throughout the season, and finished on August 20 with a rating of 57 percent good to excellent



Oat seeding began in mid April, and by April 30 progress was at 10 percent. Planting reached 94 percent complete on May 28, 4 days ahead of the 5-year average. Seventy percent of the crop had emerged by May 28 and 95 percent had emerged by June 11. Oats started to head around June 1 and reached 36 percent headed June 18, 4 days earlier than normal. Heading was 95 percent complete on July 16. Oats began turning color around June 18. Ninety-six percent of the acreage had turned color by August 6. Harvest for grain began in early July and reached 18 percent on July 23, 6 days ahead of the 5-year average. Progress remained 4-5 days ahead of average, reaching 95 percent harvested on September 3. Oat condition began the season with a rating of 76 percent good to excellent on May 21. Due to lack of precipitation throughout the season, conditions steadily declined, with the last rating on August 6 of 34 percent good-to-excellent.



The first cutting of **alfalfa hay** started the week of May 21. First cutting progress remained ahead of the 5-year average, reaching 46 percent on June 4 and 96 percent on June 25. The second cutting of alfalfa hay was underway by mid June, and was usually on par with the average. Progress reached 94 percent on August 13. The first all-hay condition rating of the year was 35 percent good to excellent on May 7. Conditions rose to 76 percent good to excellent on May 28, but declined due to weather conditions, ending with a rating of 19 percent on July 30.

**Barley** seeding began in late April, a couple of weeks later than the 5-year average. Progress was relatively slow until late May, reaching 93 percent on May 28, 10 days ahead of normal. Emergence started around May 7 and was at 94 percent on June 11. Heading began in mid-June and remained ahead of the average pace by a day or 2 throughout the stage, reaching 93 percent on July 16. Progress of barley turning color remained close to the 5-year average, reaching 40 percent on July 16 and 96 percent on August 6. Harvest got underway by July 16 with 9 percent harvested by July 30. The harvest proceeded about a week behind normal until reaching 95 percent on September 10, 2 days ahead of average. Barley condition rated 77 percent good to excellent to begin the season on June 4. Conditions were mostly steady, averaging 62 percent good to excellent and ending the season at 61 percent good to excellent on August 20.

**Dry edible bean** planting was underway by early May and reached 27 percent on the 21st of the month, 3 days behind the 5-year average. Planting progress was at 67 percent on May 28 and 90 percent on June 4, 10 days ahead of average. Emergence began around May 21 and reached 93 percent on July 2. Blooming progress reached 4 percent on June 25, 2 days ahead of the 5-year average. By August 6, 93 percent of the crop had bloomed, near average. Ninety-two percent of dry bean acres were setting pods or beyond on August 13, and by September 17 dropping-leaves progress reached 93 percent. Harvest began in early September, about a week behind average, but ended the season ahead of average. Harvest was at 96 percent on October 15. Crop condition ratings began on June 11 with 62 percent rated good to excellent. The condition rating improved to 75 percent good to excellent by July 16, then dropped due to lack of rain, ending the season at 49 percent good to excellent on September 24.

**Sugarbeet** planting got a slow start in late April, reaching 23 percent by May 7, a week behind the 5-year average. On May 21 planting was 94 percent complete, 11 days ahead of average. Good weather at the end of the season allowed harvest to advance quickly. Harvest progress was at 61 percent on October 15, a couple of days ahead of the 5-year average, and was complete by 29 October. The first sugarbeet condition rating of the year on June 11 was 95 percent good to excellent. Good-to-excellent condition ratings remained in the low 90s throughout the season and finished at 92 percent.

**Sunflower** planting began in mid-May, 2 weeks behind the normal. Planting progress was at 29 percent on May 21, 4 days behind the 5-year average. Planting wrapped up about 1 week ahead of average, hitting 96 percent on June 11. Sunflower harvest began in late September, with 36 percent harvested by October 15. On October 29 progress was at 74 percent, 4 days earlier than normal. Harvest progress was 95 percent complete on November 26. The first condition rating of the year was 68 percent good to excellent for the week ending June 18. Conditions fluctuated with the lack of rain, hitting a high of 83 percent good to excellent on July 23 and ending the season at 55 percent.



**USDA-NASS Upper Midwest Region — Minnesota Field Office**

Phone: 651-728-3113

Fax: 855-271-9802

E-Mail: [NASSRFOUMR@usda.gov](mailto:NASSRFOUMR@usda.gov)

Greg Thessen, Director  
Tony Dahlman, Deputy Director  
Steve Maliszewski, Deputy Director  
Dan Lofthus, Minnesota State Statistician

