



United States Department of Agriculture  
National Agricultural Statistics Service  
**Florida Crop Progress  
and Condition Report**



Cooperating with the Florida Department of Agriculture and Consumer Services and the UF/IFAS Extension Service  
Southern Region, Florida Field Office · 2290 Lucien Way Suite 300 · Maitland, FL 32751 · (407) 648-6013  
[www.nass.usda.gov](http://www.nass.usda.gov)

October 3, 2016

Media Contact: Mark Hudson

## General

According to the National Agricultural Statistics Service in Florida, there were 6.3 days suitable for fieldwork for the week ending Sunday, October 2, 2016. Precipitation estimates ranged from no rain in Carrabelle (Franklin County) to 7.82 inches in Homestead (Miami-Dade County). The average mean temperatures ranged from 77.3°F in Monticello (Jefferson County) to 80.8°F in Ft. Lauderdale (Broward County). The southern and central parts of the state received the most rainfall this week. Producers are planning with the expected hurricane in mind.

## Citrus

Daily high temperatures were above average for this time of year. All areas across the citrus region had daily highs reaching at least the lower 90s. Rainfall was above average in the complete citrus growing region. The most rainfall fell in the western area. Joshua (DeSoto County) had 6.08 inches for the week; Ona (Hardee County) and Dover (Hillsborough County) each had just over 3.50 inches of rainfall. Of the eighteen stations monitored, seven had more than two inches of rainfall. According to the U.S. Drought Monitor last updated September 27, 2016, only a portion of Orange, Seminole, Brevard, and Volusia Counties were showing abnormally dry conditions. The remainder of the citrus region was drought free.

Fruit sizes are variable due to multiple blooms earlier in the season. Hamlin Oranges are showing color in the southern areas. Red grapefruit on the east coast are showing color in well cared for groves. There have been small amounts of early oranges harvested for the processed market. Fallglo tangerines, Ambersweet and Navel oranges, and Red Grapefruit have been harvested in small amounts for the fresh market. Growers are mowing, spraying, and applying herbicides as part of normal routine grove care. Pushing of dead and dying trees continues, with some resetting of new trees reported.

## Fruits and Vegetables

Leafy greens, broccoli, cauliflower and cabbage are being planted in Flagler and Putnam Counties. Green beans are being harvested in Miami-Dade County while rain has interfered with land preparation and planting for vegetables in southern Florida. Crops coming to market include avocado, bitter melon, boniato, cucumbers, green beans, malanga, mango, okra, sweet potatoes, and other tropical fruits.

## Livestock and Pastures

Cattle and pastures remain in mostly good condition this week. Pastures in Okeechobee County were flooded. Armyworms and stem maggots are hurting pastures in Flagler and Putnam Counties. Pasture quality is declining seasonally across the state.

## Field Crops

Peanut harvest is continuing with poor yields being reported in Dixie and Gilchrist Counties. Cotton is being harvested in Jackson, Walton, and Washington Counties. Hay cutting activities were reported in Dixie, Jackson, and Flagler Counties. A small amount of oats were planted in Jackson County. Sugarcane harvest and planting is scheduled to start this week in Glades and Hendry Counties. Soybeans harvest is beginning in Walton County.

### Soil Moisture for Week Ending 10/02/16

Topsoil	This week	Previous week	5 year avg
	(percent)	(percent)	(percent)
Very short .....	1	0	1
Short .....	13	12	7
Adequate .....	67	70	70
Surplus.....	18	18	22

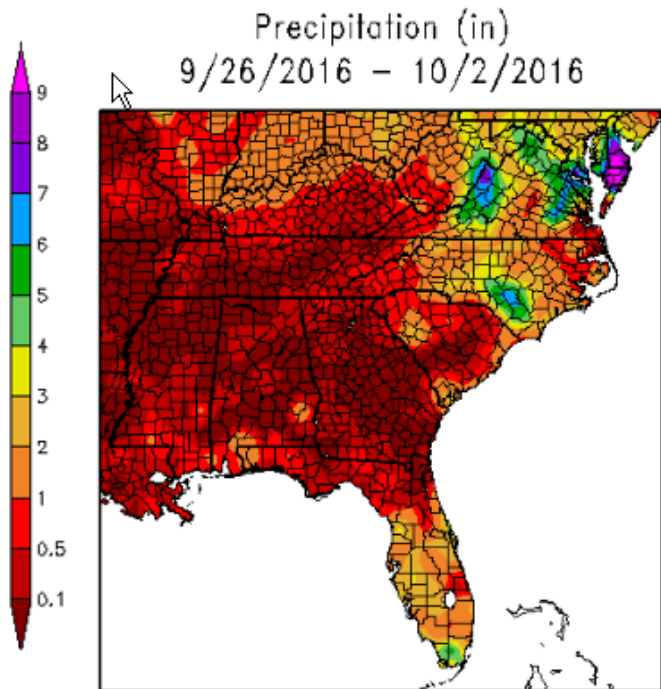
### Crop Progress for Week Ending 10/02/16

Crop stage	This week	Prev week	Prev year	5 Year avg
	(percent)	(percent)	(percent)	(percent)
Peanuts - Harvested.....	58	39	53	40

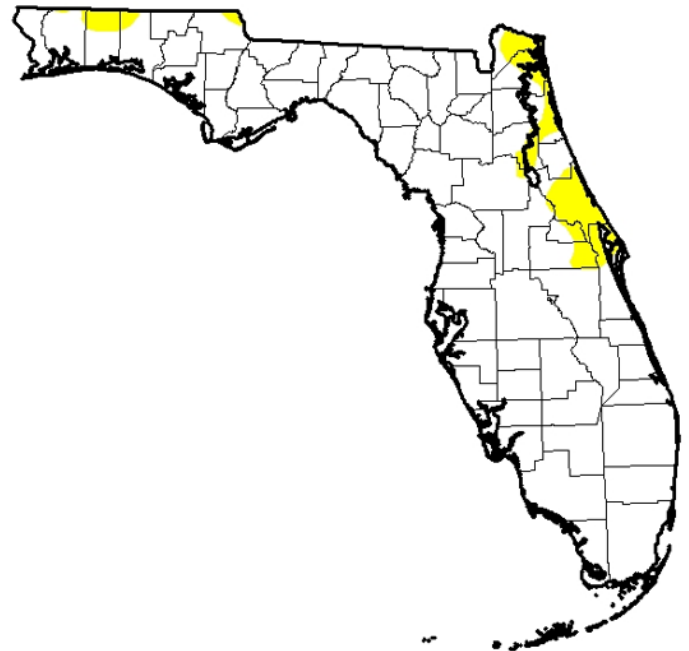
### Condition for week ending 10/02/16

Crop	Very poor	Poor	Fair	Good	Excellent
	(percent)	(percent)	(percent)	(percent)	(percent)
Cattle.....	0	1	19	68	12
Pasture & Range...	2	2	31	53	12
Peanuts.....	0	7	32	48	13

### U.S. Drought Monitor Florida



Generated 10/3/16 at HPRCC using provisional data. Regional Climate Centers.  
<http://www.hprcc.unl.edu/maps.php?map=ACISClimateMaps>



#### Intensity:



September 27, 2016 (Released Thursday Sep 29, 2016)  
<http://droughtmonitor.unl.edu>