



Florida Agricultural Statistics Service
 1222 Woodward Street
 Orlando, Florida 32803
 407 / 648-6013

<http://www.nass.usda.gov/fl>

WEATHER & CROP NEWS



Week ending September 2, 2001

Released 4:00 P.M.

September 5, 2001

WEATHER SUMMARY: Scattered showers continued during the week of August 26 through September 1. Rainfall totaled from none at several locations to over an inch and a half. Temperatures at the major stations averaged normal to three degrees above. Most daytime highs were in the 90s with Ocklawaha recording one daily high at 100 degrees. Nighttime lows were mostly in the 70s.

FIELD CROPS: Soil moisture conditions vary by locality according to the amount of recent rainfall received. Topsoil and subsoil moisture supplies are mostly short to adequate with some scattered localities reporting very short supplies. Recent dry weather speeded hay making with baling very active. However, dry soils are slowing the regrowth of some hay. Peanut harvesting is beginning with most digging to start in about ten days to two weeks. Peanut condition is rated 25 percent fair, 65 percent good and 10 percent excellent. Tobacco pulling is nearing the end. Older cotton fields are showing open bolls. Sugarcane is in good condition despite water restrictions.

Moisture Rating	Topsoil		Subsoil	
	Last week	This week	Last week	This week
	Percent			
Very short	2	4	2	2
Short	16	40	17	31
Adequate	60	56	61	67
Surplus	22	0	20	0

LIVESTOCK AND PASTURES: In the Panhandle counties, Bahia grass is showing drought stress at some locations. In the north and central areas, soil is dry at most locations and pasture grass growth is slowed by the lack of soil moisture. Ponds and lakes are still low. In the southwest, cattle condition is fair to good. Statewide, condition of cattle and calves is mostly good.

Condition	Range		Cattle	
	Last week	This week	Last week	This week
	Percent			
Very poor	0	0	0	0
Poor	5	5	0	5
Fair	25	30	25	20
Good	70	60	75	70
Excellent	0	5	0	5

CITRUS: Virtually all areas of Florida's citrus belt received scattered rains and thunderstorms during the week. However, the first part of the week was generally dry and very hot with some of the caretakers irrigating to keep their resets in good condition. The hot and humid weather continues to generate an abundance of new growth in all areas. New crop fruit is progressing very well, with good sizes in nearly all well-cared-for groves. Testing continues in several counties for early fresh shipments. There are some Ambersweet and Navel oranges, grapefruit and Fallglo tangerines that are very close to passing for early harvesting.

Caretakers are very busy mowing, chopping and discing cover crops that have made excellent growth with the help of recent thunderstorms. Summer sprays and fertilizations are just about complete in most areas. Dead trees are being pushed and burned. Some of the larger groves are resetting where the older trees have been removed.

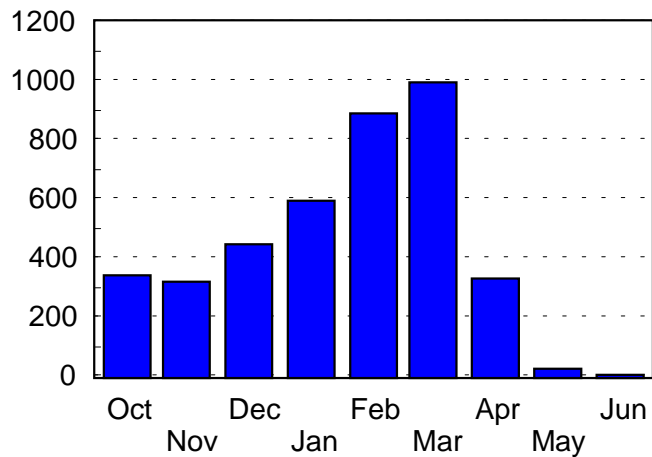
VEGETABLES: Planting of fall crops is gaining momentum in southern and central Peninsula areas. Eggplant, peppers, squash, plum tomatoes and cherry tomatoes are in fair condition, and round tomatoes are in fair to good condition in the Southwest region. Hot plastic is hindering the development of tomato transplants around Immokalee with growers making spot resets of those dying. Young okra fields coming into production are in good condition in Dade County. East Coast growers continue to plant eggplant, tomatoes and a small acreage of peppers with condition rated mostly good. Youngest tomato plants are knee high around Quincy with picking expected to start in late September.

In cooperation with the Florida Cooperative Extension Service whose county directors participate in supplying field information.

MONTHLY UTILIZATION OF FRESH SELECTED GRAPEFRUIT 2000-2001 SEASON

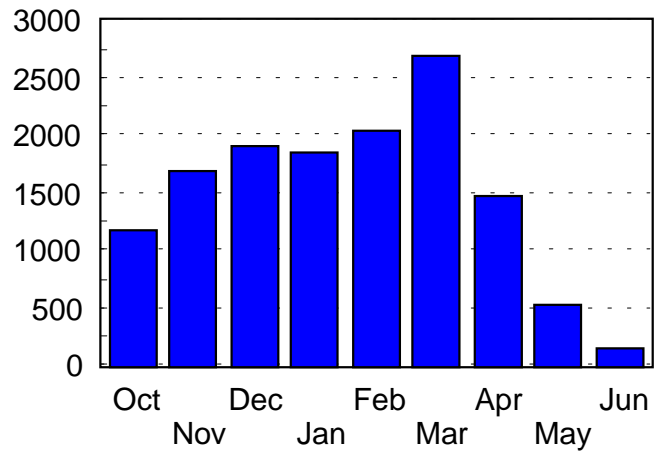
White Seedless Grapefruit

Thousand boxes



Colored Seedless Grapefruit

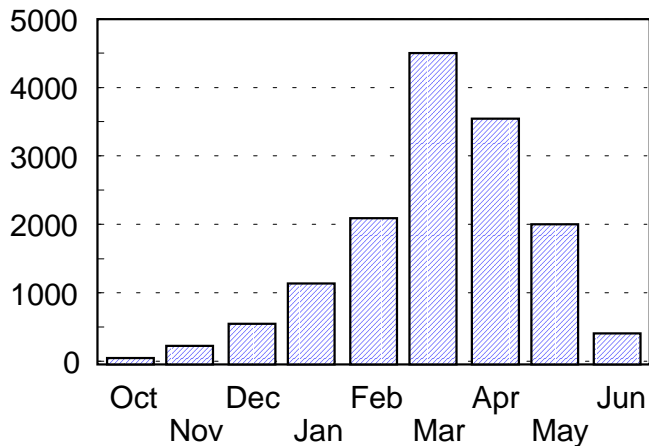
Thousand boxes



MONTHLY UTILIZATION OF PROCESSED SELECTED GRAPEFRUIT 2000-2001 SEASON

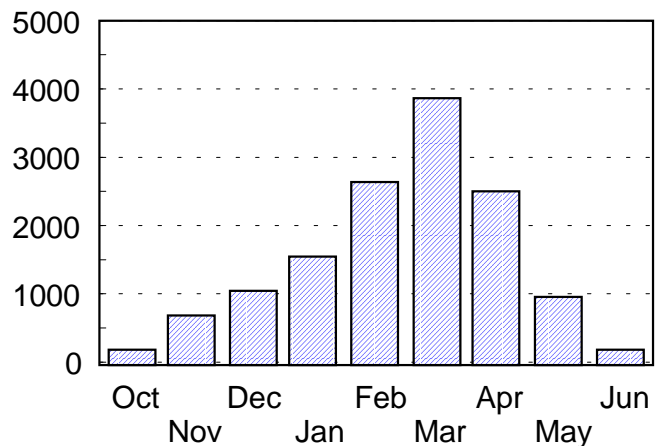
White Seedless Grapefruit

Thousand boxes



Colored Seedless Grapefruit

Thousand boxes



To receive this report via e-mail, send an e-mail message to listserv@newsbox.usda.gov with the following message: **add usda-fl-crop-weather your-email-address your.name (optional) An example: add usda-fl-crop-weather jsmith@qtm.com john smith.** The report will be e-mailed automatically to your e-mail address each week.