



California Crop Weather

Cooperating with the California Department of Food and Agriculture
Pacific Region • P.O. Box 1258 • Sacramento, CA 95812 • (916) 738-6600 • (855) 270-2722 FAX • www.nass.usda.gov/ca

WEEK ENDING: November 28, 2021
RELEASED: November 29, 2021

FREQUENCY: Weekly
VOL. 42 NO. 35

This is the final weekly publication that will be published in 2021. For December 2021 through March 2022, USDA NASS will be publishing monthly national reports titled "Crop Progress – State Stories". The monthly reports can be found here:
usda.library.cornell.edu/concern/publications/fq977t77k?locale=en

WEATHER

Temperature lows for California ranged from single digits to low 50s in the mountains, high 10s to low 60s in the desert, high 20s to high 50s along the coast, and low 30s to high 40s in the valley. Temperature highs for the state ranged from the mid 40s to high 60s in the mountains, low 50s to mid 80s along the coast, mid 50s to low 70s in the valley, and high 50s to mid 80s in the desert.

FIELD CROPS

Across California, **winter wheat**, **oats**, **barley**, and **triticale** continued to be planted and were emerging rapidly. In the Sacramento Valley, some fields were being worked to control weeds. Winter wheat grew steadily. In the San Joaquin Valley, **cotton** ginning continued but was winding down. Cotton producers shredded stalks to manage pink bollworms. In Tulare County, growers continued to prepare fields for planting winter grains. Other field crops were growing steadily.

FRUIT CROPS

Various orchards were pruned. **Kiwifruit** harvest was ongoing. Melogold and Oro Blanco **grapefruit** harvests continued. A few late varieties of **grapes** remained to be harvested. Citrus trees were treated with fungicides. **Persimmons**, Navel **oranges**, and **mandarins** were harvested. **Olive** harvest was still underway.

NUT CROPS

Almond leaves and mummies were removed from the trees. **Walnut** leaves were turning color and falling.

VEGETABLE CROPS

In the Central Valley, some **sweet potato** fields were mowed in preparation for harvest and some fields were being harvested. In Southern California, **carrots** were growing and were harvested. In Kern County, some spring **potato** fields were pre-irrigated. In Imperial County, **melons** and **lettuce** were harvested.

LIVESTOCK

Recent warm temperatures promoted grass growth in rangeland and non-irrigated pasture. Range was in good to fair condition. Across the state, irrigated pasture remained in good to excellent condition. Supplemental feeding of cattle continued. Fall calving and lambing season was ongoing. Sheep grazed on retired cropland, harvested grain fields, and alfalfa fields. Hives continued to be moved into the state for overwintering and in anticipation of the 2022 almond bloom.

NOTICE: USDA NASS will be changing the base temperature used to calculate growing degree days (found in the table below) from 60 °F to 50 °F. This change will occur in April 2022 with the start of the 2022 California Crop Weather (Crop Progress & Condition) publications.

CALIFORNIA CROP WEATHER – WEEK ENDING NOVEMBER 28, 2021											
STATIONS	TEMPERATURE				GROWING DEGREE DAYS ¹ AT 60 °F BASE		RAIN DAYS	PRECIPITATION ²			
	Average for Week Ending Nov 28, 2021	Departure from Normal ³	High	Low	This Year	Normal Year ³	This Season	This Week	This Season	Normal Season ³	Normal Year ³
					Jan 1 - Nov 28, 2021	Jan 1 - Nov 28, 2021	Oct 1 - Nov 28, 2021	Week Ending Nov 28, 2021	Oct 1 - Nov 28, 2021	Oct 1 - Nov 28	Oct 1 - Sept 30
-- Degrees Fahrenheit --				-- Number --		-- Days ⁴ --	-- Inches of Precipitation --				
North Coast											
Eureka WFO	49	0	62	36	34	0	26	0.02	6.86	7.37	40.53
Ukiah	52	4	74	31	2,305	1,492	16	0.00	8.48	6.03	37.61
Santa Rosa	52	2	70	34	1,098	957	19	0.00	13.70	6.32	36.51
Napa State Hospital	51	2	67	34	905	698	13	0.00	7.93	3.32	20.52
Central Coast											
San Francisco	57	3	68	46	873	589	12	0.00	6.47	3.13	20.79
San Jose	56	1	74	41	1,491	1,549	8	0.00	2.30	2.52	15.02
Salinas	NA	NA	NA	NA	NA	515	NA	NA	NA	1.87	12.91
Monterey	60	7	80	45	722	148	10	0.00	2.81	2.67	16.23
Paso Robles	53	4	78	29	2,168	1,623	5	0.00	1.59	1.57	12.87
Sacramento Valley											
Redding	53	4	71	34	3,417	2,642	16	0.00	8.37	6.16	34.80
Red Bluff	54	5	71	36	3,411	2,663	13	0.00	5.32	3.85	24.63
Orland	NA	NA	NA	NA	NA	2,387	NA	NA	NA	3.63	23.14
Oroville	54	4	67	39	3,265	2,455	15	0.00	7.78	5.95	31.72
Marysville	52	4	67	34	2,808	2,206	8	0.00	0.73	4.44	22.88
Sacramento	52	3	66	35	2,617	2,053	12	0.00	5.48	3.44	21.35
San Joaquin Valley											
Stockton	52	2	68	36	2,279	2,167	11	0.00	4.34	2.38	14.14
Modesto	54	2	68	37	2,615	2,635	8	0.00	2.37	1.93	13.19
Merced Macready	51	2	70	35	2,939	2,254	7	0.00	2.00	1.92	12.59
Madera	51	2	70	34	2,920	2,389	5	0.00	0.66	1.96	12.10
Fresno	53	2	70	39	3,852	3,060	5	0.00	1.57	1.62	11.57
Lemoore	50	1	73	30	3,231	2,409	4	0.00	0.77	1.03	7.95
Visalia	51	1	70	33	3,225	2,672	6	0.00	1.64	1.76	10.99
Bakersfield	54	2	70	37	4,043	3,199	3	0.00	0.95	0.89	6.51
Cascade Sierra											
Alturas	37	4	65	9	897	401	14	0.00	1.93	2.68	14.22
Mount Shasta	43	5	64	24	1,344	585	23	0.00	9.31	6.94	43.48
Blue Canyon	52	11	64	36	1,577	800	18	0.00	22.16	11.62	65.00
Yosemite Valley	49	8	57	38	1,250	1,260	13	0.00	8.52	6.87	42.02
South Coast											
Santa Maria	57	3	80	37	676	423	3	0.00	1.40	1.83	14.05
Santa Barbara	55	1	79	39	880	701	6	0.00	1.21	2.26	17.89
Oxnard	61	4	85	46	1,100	775	6	0.00	0.84	2.08	14.71
Riverside	64	6	85	44	3,240	2,764	3	0.00	0.29	1.20	12.50
Los Angeles	64	5	85	51	1,605	1,427	5	0.00	0.46	1.58	12.92
San Diego	62	3	82	46	2,253	1,720	4	0.00	1.01	1.50	10.42
Southeast Interior											
Bishop	45	3	72	18	2,379	1,761	2	0.00	0.78	0.78	5.21
Daggett	56	4	77	37	4,825	3,982	1	0.00	0.26	0.49	4.08
Lancaster	49	1	73	25	3,399	2,689	1	0.00	0.28	0.94	7.43
Thermal	61	4	84	36	5,735	4,926	1	0.00	0.01	0.44	3.22
Blythe	63	5	80	43	6,182	5,529	1	0.00	0.07	0.39	3.85
Imperial	63	4	81	43	5,831	5,276	1	0.00	0.02	0.51	3.46

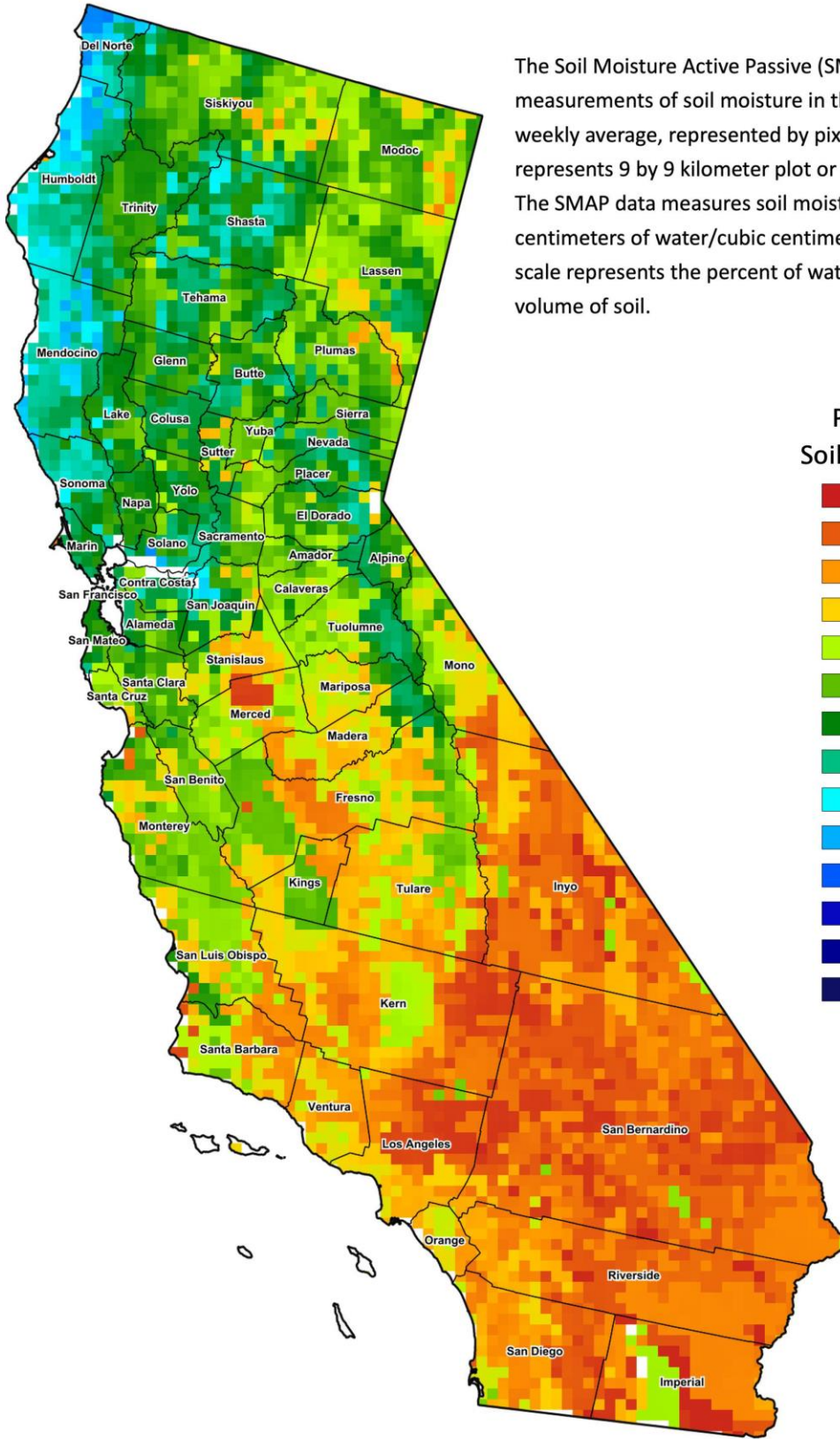
¹ Previously labeled as growing degree hours. The column title was corrected in the Sept 27, 2021 report.

² Rain or melted snow/ice.

³ Normal periods 1980-2010 used in departure from normal calculations.

⁴ Total number of days with precipitation events this season.

Data retrieved from NOAA and NWS. Calculated by USDA NASS.
All rights reserved.



The Soil Moisture Active Passive (SMAP) provides measurements of soil moisture in the root zone as a weekly average, represented by pixels. Each pixel represents 9 by 9 kilometer plot or about 20,000 acres. The SMAP data measures soil moisture in cubic centimeters of water/cubic centimeters of soil. The scale represents the percent of water in a given volume of soil.

