



California Crop Weather

Cooperating with the California Department of Food and Agriculture
Pacific Region • P.O. Box 1258 • Sacramento, CA 95812 • (916) 738-6600 • (855) 270-2722 FAX • www.nass.usda.gov/ca

WEEK ENDING: October 3, 2021
RELEASED: October 4, 2021

FREQUENCY: Weekly
VOL. 42 NO. 27

WEATHER

Temperature lows for California ranged from high 20s to low 60s in the mountains, mid 30s to mid 70s in the desert, low 40s to high 60s along the coast, and mid 40s to low 60s in the valley. Temperature highs for the state ranged from mid 50s to mid 80s in the mountains, high 50s to high 90s along the coast, low 70s to low 100s in the desert, and mid 70s to mid 90s in the valley.

FIELD CROPS

Across the Central Valley, **alfalfa** continued to be cut, dried and baled. Groundwork continued in preparation for fall and winter plantings. In San Mateo County, **quinoa** was harvested and bagged. In the Sacramento Valley, **rice** harvest progressed rapidly. Some growers reported that the new Calrose variety M-211 was performing well. In the San Joaquin Valley, upland **cotton** harvest began and modules were trucked to gin yards. **Dry beans** were being cut and dried in Stanislaus County. In Tulare County, **corn** for silage needed less irrigation with the cooler temperatures. In the northern mountains, growers were working on their current cutting of alfalfa and were expecting one more cutting for the year. Grain hay harvest was complete in Siskiyou, Trinity, and Modoc counties.

FRUIT CROPS

Stone fruit harvest and post-harvest pruning continued. Some orchards were removed and prepped for burning. **Prune, fig, pear, and pluot** harvests continued to wind down for the season. **Peach** and **nectarine** harvests slowed. **Kiwifruit** and **pomegranate** harvests continued. Various table **grape** varieties and wine grape harvests were ongoing. **Quince** harvest began. Valencia **orange, pummelo, and grapefruit** harvests continued. Early **mandarin** development was steady. Citrus groves were hedge rowed, pruned, and sprayed to control weeds. **Olive** harvest continued. **Strawberries** were harvested.

NUT CROPS

Weed spraying continued in **almonds** and **walnuts**. Almond, walnut, and **pistachio** harvests were ongoing.

VEGETABLE CROPS

Across the state, **winter squash** and **onions** were harvested. In the San Joaquin Valley, **melon** harvest began to wind down. In Stanislaus County, **tomato** harvest continued. **Broccoli** continued to be planted. In Tulare County, **eggplant, summer squash, hot peppers, bell peppers, and tomatoes** continued to be harvested. In the central and southern coast, leaf **lettuce** continued to grow and be harvested. In San Mateo County, tomatoes and summer squash were harvested. In Monterey County, **celery** harvest was winding down.

LIVESTOCK

Rangeland and non-irrigated pasture were in very poor condition. Irrigated pasture remained in good to excellent condition. Supplemental feeding and watering of cattle continued, as well as movement of stock to better range. Cattle were moved down from higher elevation range in preparation for winter. Some sheep were moved off summer range to Imperial Valley. Some sheep grazed on retired cropland and harvested grain fields in the Central Valley. Beekeepers provided supplemental pollen for their hives and staged hives near water sources.

NOTE: USDA NASS is considering changing the base temperature used to calculate growing degree days (found in the table below) from 60 °F to 50 °F. Your feedback on this change is welcomed. Please contact Sav Moore at savanna.moore@usda.gov or 916-738-6620 with your comments. Thank you.

CALIFORNIA CROP WEATHER – WEEK ENDING OCTOBER 3, 2021											
STATIONS	TEMPERATURE				GROWING DEGREE DAYS ¹ AT 60 °F BASE		RAIN DAYS	PRECIPITATION ²			
	Average for Week Ending Oct 3, 2021	Departure from Normal ³	High	Low	This Year	Normal Year ³	This Season	This Week	This Season	Normal Season ³	Normal Year ³
					Jan 1 - Oct 3, 2021	Jan 1 - Oct 3, 2021	Oct 1 - Oct 3, 2021	Week Ending Oct 3, 2021	Oct 1 - Oct 3, 2021	Oct 1 - Oct 3	Oct 1 - Sept 30
	-- Degrees Fahrenheit --				-- Number --		-- Days ⁴ --	-- Inches of Precipitation --			
North Coast											
Eureka WFO	55	-1	66	44	31	0	0	0.35	0.00	0.10	40.53
Ukiah	68	3	96	44	2255	1459	0	0.00	0.00	0.01	37.61
Santa Rosa	66	2	92	42	1070	920	0	0.04	0.00	0.07	36.51
Napa State Hospital	67	5	92	42	880	691	0	0.00	0.00	0.05	20.52
Central Coast											
San Francisco	67	3	85	53	787	530	0	0.00	0.00	0.04	20.79
San Jose	68	1	87	51	1354	1422	0	0.00	0.00	0.05	15.02
Salinas	66	3	87	49	699	472	0	0.00	0.00	0.03	12.91
Monterey	63	3	84	49	611	148	0	0.01	0.00	0.03	16.23
Paso Robles	69	3	97	40	2073	1564	0	0.00	0.00	0.03	12.87
Sacramento Valley											
Redding	70	0	95	50	3320	2538	0	0.02	0.00	0.09	34.80
Red Bluff	71	0	94	50	3318	2532	0	0.00	0.00	0.06	24.63
Willows	N/A	N/A	N/A	N/A	N/A	N/A	N/A	N/A	N/A	N/A	N/A
Oroville	70	1	93	48	3154	2337	0	0.00	0.00	0.03	31.72
Marysville	69	1	92	45	2737	2102	0	0.01	0.00	0.04	22.88
Sacramento	69	1	91	49	2540	1966	0	0.00	0.00	0.03	21.35
San Joaquin Valley											
Stockton	67	-2	89	48	2211	2060	0	0.00	0.00	0.04	14.14
Modesto	68	-3	89	48	2547	2472	0	0.00	0.00	0.04	13.19
Merced Macready	69	1	92	45	2827	2155	0	0.00	0.00	0.02	12.59
Madera	68	-1	92	46	2818	2276	0	0.00	0.00	0.01	12.10
Fresno	73	1	91	56	3692	2888	0	0.00	0.00	0.03	11.57
Lemoore	70	1	94	47	3123	2301	0	0.00	0.00	0.04	7.95
Visalia	69	-2	91	52	3114	2523	0	0.00	0.00	0.04	10.99
Bakersfield	73	0	94	57	3874	2998	0	0.00	0.00	0.01	6.51
Cascade Sierra											
Alturas	51	-1	81	27	897	401	0	0.36	0.00	0.05	14.22
Mount Shasta	56	-1	86	33	1341	585	0	0.14	0.00	0.09	43.48
Blue Canyon	60	0	73	39	1562	800	0	0.64	0.00	0.20	65.00
Yosemite Valley	N/A	N/A	N/A	N/A	N/A	N/A	N/A	N/A	N/A	N/A	N/A
South Coast											
Santa Maria	61	-1	86	46	563	389	0	0.00	0.00	0.03	14.05
Santa Barbara	62	-2	89	46	786	650	0	0.00	0.00	0.05	17.89
Oxnard	66	2	95	53	922	695	0	0.00	0.00	0.02	14.71
Riverside	73	0	97	53	2891	2482	0	0.00	0.00	0.00	12.50
Los Angeles	69	1	87	59	1324	1201	0	0.00	0.00	0.04	12.92
San Diego	71	2	89	59	1932	1465	0	0.00	0.00	0.03	10.42
Southeast Interior											
Bishop	62	-1	91	35	2375	1756	0	0.00	0.00	0.03	5.21
Daggett	73	-2	97	51	4529	3744	0	0.00	0.00	0.02	4.08
Lancaster	67	-1	90	39	3312	2609	0	0.00	0.00	0.02	7.43
Thermal	78	-1	101	51	5243	4497	0	0.00	0.00	0.02	3.22
Blythe	81	0	97	62	5631	5036	0	0.00	0.00	0.03	3.85
Imperial	80	0	99	59	5223	4775	0	0.00	0.00	0.03	3.46

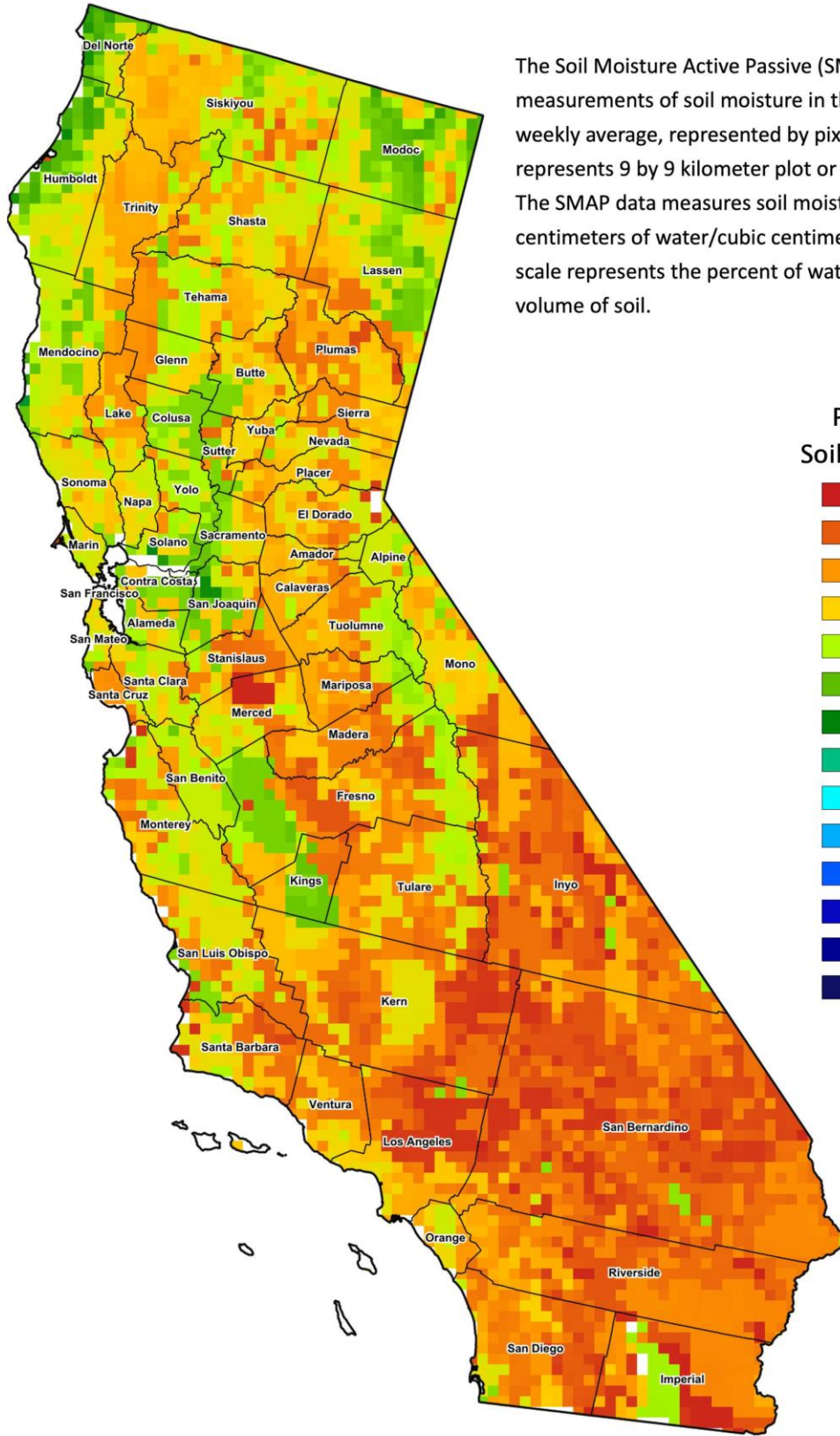
¹ Previously labeled as growing degree hours. The column title was corrected in the Sept 27, 2021 report.

² Rain or melted snow/ice.

³ Normal periods 1980-2010 used in departure from normal calculations.

⁴ Total number of days with precipitation events this season.

Data retrieved from NOAA and NWS. Calculated by USDA NASS.
All rights reserved.



The Soil Moisture Active Passive (SMAP) provides measurements of soil moisture in the root zone as a weekly average, represented by pixels. Each pixel represents 9 by 9 kilometer plot or about 20,000 acres. The SMAP data measures soil moisture in cubic centimeters of water/cubic centimeters of soil. The scale represents the percent of water in a given volume of soil.

Percent Soil Moisture

- 0%
- 5%
- 10%
- 15%
- 20%
- 25%
- 30%
- 35%
- 40%
- 45%
- 50%
- 55%
- 60%
- >65%