



California Crop Weather

Cooperating with the California Department of Food and Agriculture
Pacific Region • P.O. Box 1258 • Sacramento, CA 95812 • (916) 738-6600 • (855) 270-2722 FAX • www.nass.usda.gov/ca

WEEK ENDING: September 12, 2021
RELEASED: September 13, 2021

FREQUENCY: Weekly
VOL. 42 NO. 24

WEATHER

Temperature lows for California ranged from low 30s to low 70s in the mountains, mid 40s to low 70s along the coast, low 50s to mid 80s in the desert, and mid 50s to low 80s in the valley. Temperature highs for the state ranged from high 50s to high 100s along the coast, high 60s to high 90s in the mountains, high 80s to high 100s in the valley, and mid 90s to low 110s in the desert.

FIELD CROPS

Across the Central Valley, **alfalfa** continued to be cut, dried and baled. Groundwork continued in preparation for fall plantings. In the Sacramento Valley, **rice** and **sunflower** harvest continued. In Sutter County, producers were finishing their fourth cutting of alfalfa and working on their second cutting of **Sudan**. In the San Joaquin Valley, **cotton** bolls were cracking and defoliation activity increased. **Corn** was chopped for silage. In Stanislaus County, alfalfa fields were sprayed for aphids. In Tulare County, manure was applied to corn fields that had been harvested. Some corn for silage was still being irrigated. In the Northern Mountains, alfalfa growers were working on their third cutting.

FRUIT CROPS

Nectarine, prune, plum, fig, pear, and pluot harvested was well underway. **Kiwifruit** sizing continued to steadily increase. Late variety **peach** harvest began to wrap up. Late nectarine and peach orchards were fitted with reflective tarps to improve fruit color. **Pomegranates** and **persimmons** were maturing well. Table **grapes**, wine grapes, and Gala **apples** were harvested. Grape sugar levels remained high with prolonged high temperatures. Valencia **orange, pummelo, tangelo, lemon, lime, and grapefruit** harvests continued. Early **mandarins** were sizing up well. Citrus groves continued to be sprayed with sunscreen protectant to prevent sunburn on foliage and fruit. Some citrus groves were pushed out to make room for new plantings. **Quince** was showing color and sizing up nicely. **Olives** continued to develop and increase in size. **Strawberries** were harvested while growers continued to treat their fields in preparation for strawberry planting.

NUT CROPS

Almond harvest continued. Early varieties of **walnuts** were harvested in some areas. Almond and walnut orchards were treated for weeds. **Pistachios** were harvested in Tulare county.

VEGETABLE CROPS

In the Sacramento Valley, processing **tomato** harvest continued. In Sutter County, **melon** harvest was beginning. In the San Joaquin Valley, melons and processing tomatoes continued to be harvested. In Stanislaus County, **sweet potato** harvest began. **Pumpkin** fields were sprayed for pests. In Tulare County, **onions, eggplant, zucchini, summer squash, and hot peppers** continued to be harvested. Producers prepared fields for fall plantings.

LIVESTOCK

Rangeland and non-irrigated pasture were in very poor condition. Irrigated pasture remained in good to excellent condition. Ranchers continued supplemental feeding and watering of cattle due to the extremely deteriorated range conditions. Some cattle were moved to areas with better range. Beekeepers provided supplemental pollen for their hives and staged hives near water sources.

CALIFORNIA CROP WEATHER – WEEK ENDING SEPTEMBER 12, 2021

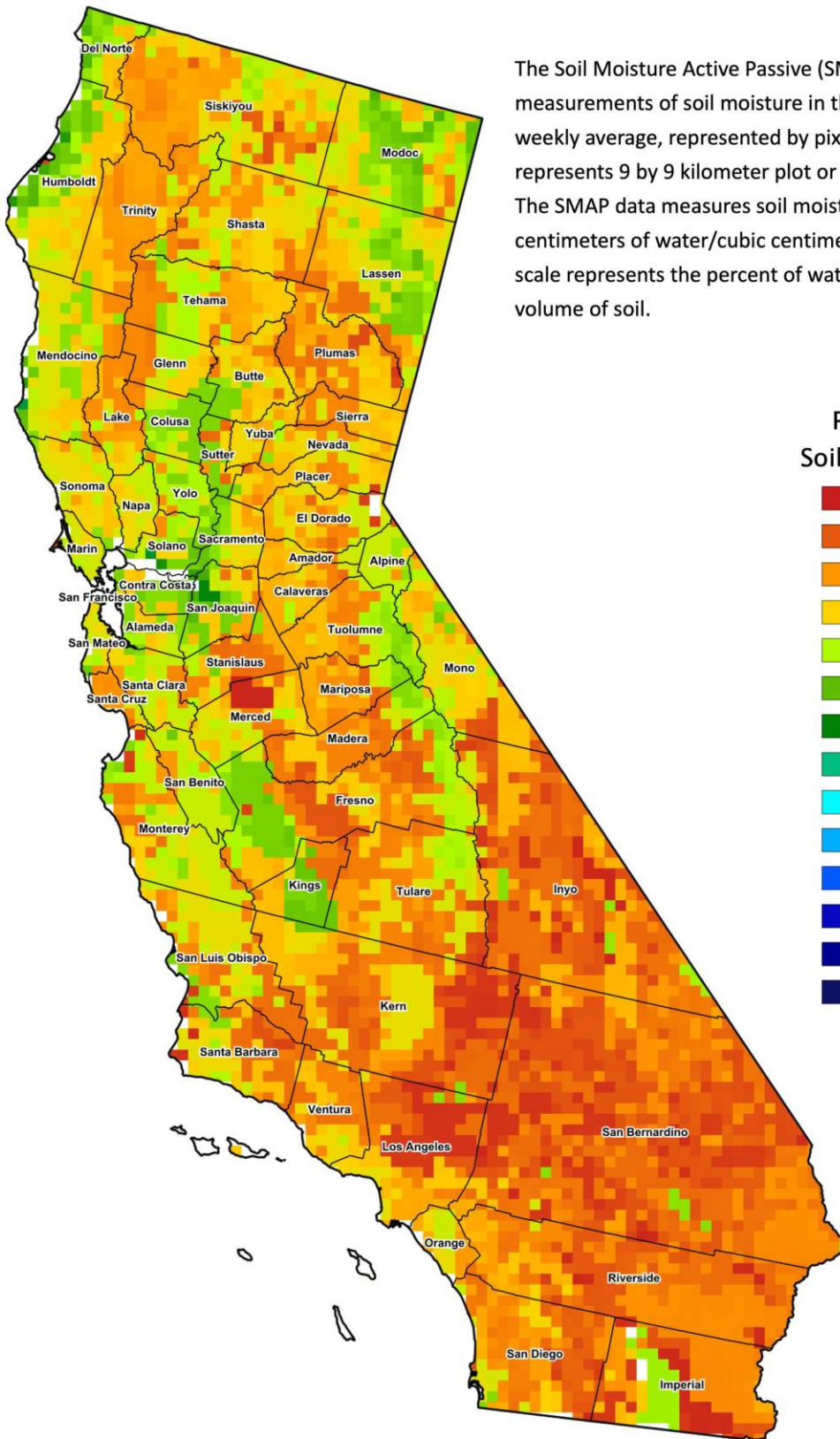
STATIONS	TEMPERATURE				GROWING DEGREE HOURS AT 60°F BASE		RAIN DAYS	PRECIPITATION ¹			
	Average for Week Ending Sep 12, 2021	Departure from Normal ²	High	Low	This Year	Normal Year ²	This Season	This Week	This Season	Normal Season ²	Normal Year ²
					Jan 1 - Sep 12, 2021	Jan 1 - Sep 12, 2021	Oct 1 - Sep 12, 2021	Week Ending Sep 12, 2021	Oct 1 - Sep 12, 2021	Oct 1 - Sep 12	Oct 1 - Sept 30
	-- Degrees Fahrenheit --				-- Number --		-- Days ³ --	-- Inches of Precipitation --			
North Coast											
Eureka WFO	56	-2	63	47	26	0	107	0.02	24.58	39.93	40.53
Ukiah	78	8	105	52	2022	1305	53	0.02	13.49	37.04	37.61
Santa Rosa	71	4	99	46	936	798	45	0.04	12.91	36.01	36.51
Napa State Hospital	68	2	93	48	750	612	41	0.00	7.48	20.12	20.52
Central Coast											
San Francisco	66	1	82	55	660	430	40	0.00	7.84	20.52	20.79
San Jose	74	4	93	60	1149	1237	33	0.00	5.33	14.71	15.02
Salinas	67	2	82	56	578	381	38	0.00	5.81	12.69	12.91
Monterey	65	3	79	56	518	124	39	0.00	7.57	15.96	16.23
Paso Robles	79	8	108	53	1842	1389	22	0.00	6.74	12.59	12.87
Sacramento Valley											
Redding	82	6	107	57	3014	2271	54	0.39	14.21	34.20	34.80
Red Bluff	83	7	106	62	3008	2254	47	0.26	9.49	24.13	24.63
Willows	N/A	N/A	N/A	N/A	N/A	N/A	N/A	N/A	N/A	N/A	N/A
Oroville	83	9	106	62	2845	2095	38	0.00	8.77	31.06	31.72
Marysville	82	9	108	58	2456	1887	37	0.01	7.15	22.37	22.88
Sacramento	80	7	104	56	2267	1750	34	0.01	6.69	20.97	21.35
San Joaquin Valley											
Stockton	79	5	102	55	1981	1825	30	0.02	7.91	13.83	14.14
Modesto	81	6	101	60	2295	2198	26	0.03	7.16	12.90	13.19
Merced Macready	83	10	105	59	2547	1930	29	0.00	7.01	12.29	12.59
Madera	83	9	106	59	2551	2033	19	0.00	1.78	11.84	12.10
Fresno	87	9	107	69	3327	2578	26	0.00	6.59	11.36	11.57
Lemoore	84	10	109	60	2811	2058	22	0.00	4.30	7.75	7.95
Visalia	81	6	101	59	2830	2254	27	0.02	5.17	10.81	10.99
Bakersfield	88	9	108	71	3507	2669	20	0.00	2.78	6.41	6.51
Cascade Sierra											
Alturas	65	7	98	32	894	401	62	0.33	6.24	13.83	14.22
Mount Shasta	69	7	97	44	1278	578	72	0.17	18.93	42.76	43.48
Blue Canyon	73	7	89	56	1433	748	67	0.79	31.76	63.81	65.00
Yosemite Valley	N/A	N/A	N/A	N/A	N/A	N/A	N/A	N/A	N/A	N/A	N/A
South Coast											
Santa Maria	66	2	83	56	507	317	26	0.00	6.90	13.84	14.05
Santa Barbara	67	1	78	54	738	548	17	0.00	7.32	17.54	17.89
Oxnard	67	2	78	59	820	586	13	0.00	2.82	14.46	14.71
Riverside	83	5	99	66	2569	2167	16	0.00	4.54	12.21	12.50
Los Angeles	71	2	87	60	1149	1016	15	0.00	5.14	12.64	12.92
San Diego	76	5	85	69	1683	1251	31	0.00	4.75	10.22	10.42
Southeast Interior											
Bishop	78	8	104	52	2216	1639	9	0.00	1.70	5.04	5.21
Daggett	91	8	110	72	4117	3367	13	0.00	0.85	3.93	4.08
Lancaster	84	8	107	62	3041	2366	14	0.00	1.37	7.27	7.43
Thermal	91	5	110	74	4763	4039	10	0.00	0.97	3.05	3.22
Blythe	97	8	111	82	5083	4524	9	0.00	1.23	3.58	3.85
Imperial	95	6	110	81	4692	4276	1	0.00	0.69	3.25	3.46

¹ Rain or melted snow/ice.

² Normal periods 1980-2010 used in departure from normal calculations.

³ Total number of days with precipitation events this season.

Data retrieved from NOAA and NWS. Calculated by USDA NASS.
All rights reserved.



The Soil Moisture Active Passive (SMAP) provides measurements of soil moisture in the root zone as a weekly average, represented by pixels. Each pixel represents 9 by 9 kilometer plot or about 20,000 acres. The SMAP data measures soil moisture in cubic centimeters of water/cubic centimeters of soil. The scale represents the percent of water in a given volume of soil.