



# California Crop Weather

Cooperating with the California Department of Food and Agriculture  
Pacific Region • P.O. Box 1258 • Sacramento, CA 95812 • (916) 738-6600 • (855) 270-2722 FAX • [www.nass.usda.gov/ca](http://www.nass.usda.gov/ca)

**WEEK ENDING: August 15, 2021**  
**RELEASED: August 16, 2021**

**FREQUENCY: Weekly**  
**VOL. 42 NO. 20**

## WEATHER

Temperature lows for California ranged from low 40s to mid 70s in the mountains, low 50s to low 70s along the coast, mid 50s to mid 80s in the desert, and high 50s to low 80s in the valley. Temperature highs for the state ranged from low 60s to high 100s along the coast, low 80s to low 100s in the mountains, mid 90s to mid 110s in the valley, and high 90s to high 100s in the desert.

## FIELD CROPS

In the Sacramento Valley, **rice** continued to mature ahead of schedule due to above normal daytime temperatures. **Sunflower** fields were drying down in preparation for harvest. **Alfalfa** continued to be cut, dried and baled. **Corn** silage was in all stages of growth and fields were monitored for pests. In the San Joaquin Valley, **cotton** was irrigated and bolls were developing. Alfalfa and **Sudan** was cut, dried and baled. In Tulare County, **dry bean** fields were treated for weeds and insect pests. Corn for silage was being chopped for local dairy feed. Corn fields that had been harvested were fertilized with cow manure. **Sorghum** fields were cultivated for weeds.

## FRUIT CROPS

Stone fruits continued to be harvested and pruned where necessary. Excessive heat coupled with lack of water continued to be a growing concern. **Apricots** continued to ripen rapidly and topping continued. Freestone and clingstone **peaches**, **nectarines**, **plums**, **pears**, and **pluots** were harvested. **Kiwifruit**, **pomegranates**, and **persimmons** were sizing up nicely. Table **grapes**, wine grapes, and Gala **apples** were harvested. **Pummelo**, **tangelo**, **lemon**, **lime**, Valencia **orange**, and **grapefruit** harvests were still underway. **Olives** continued to develop. **Strawberry** rows were prepped for planting.

## NUT CROPS

**Almond**, **walnut**, and **pistachio** orchards were treated for weeds in anticipation of the upcoming harvest season. Almond harvest continued with some shaking and picking up the nuts from the fields. Walnut orchards were irrigated.

## VEGETABLE CROPS

Across the Central Valley, processing **tomatoes** and **melons** were harvested. In Fresno County, **bell pepper** harvest continued. In Stanislaus County, **garlic** and **sweet corn** were harvested. **Sweet potatoes** and peppers continued to grow. In Tulare County, spring **lettuce**, melons, **onions**, **eggplants**, **zucchini**, and **herbs** were harvested. New **squash** and bell peppers continued to develop. Sweet corn, **cucumbers**, peppers, tomatoes, and watermelons were sold at local markets and roadside stands.

## LIVESTOCK

Rangeland and non-irrigated pasture were in poor to very poor condition. Irrigated range remained in good to excellent condition. Some livestock were moved to areas with better grazing and water conditions. Cattle supplemental feeding with alfalfa and oat hay continued.

**CALIFORNIA CROP WEATHER – WEEK ENDING AUGUST 15, 2021**

STATIONS	TEMPERATURE				GROWING DEGREE HOURS AT 60°F BASE		RAIN DAYS	PRECIPITATION <sup>1</sup>			
	Average for Week Ending Aug 15, 2021	Departure from Normal <sup>2</sup>	High	Low	This Year	Normal Year <sup>2</sup>	This Season	This Week	This Season	Normal Season <sup>2</sup>	Normal Year <sup>2</sup>
					Jan 1- Aug 15, 2021	Jan 1- Aug 15, 2021	Oct 1- Aug 15, 2021	Week Ending Aug 15, 2021	Oct 1- Aug 15, 2021	Oct 1- Aug 15	Oct 1- Sept 30
	-- Degrees Fahrenheit --				-- Number --		-- Days <sup>3</sup> --	-- Inches of Precipitation --			
<b>North Coast</b>											
Eureka WFO	57	-2	66	50	20	0	104	0.00	24.54	39.53	40.53
Ukiah	83	10	108	59	1574	979	51	0.00	13.47	36.81	37.61
Santa Rosa	68	1	89	50	704	576	44	0.00	12.87	35.86	36.51
Napa State Hospital	67	1	85	51	565	428	41	0.00	7.48	20.05	20.52
<b>Central Coast</b>											
San Francisco	65	1	75	57	486	288	40	0.00	7.84	20.45	20.79
San Jose	72	1	86	57	834	932	33	0.00	5.33	14.67	15.02
Salinas	67	3	76	57	393	244	38	0.00	5.81	12.65	12.91
Monterey	66	5	78	58	350	61	39	0.00	7.57	15.90	16.23
Paso Robles	79	6	107	52	1443	1038	22	0.00	6.74	12.48	12.87
<b>Sacramento Valley</b>											
Redding	88	7	115	66	2445	1768	52	0.00	13.82	33.86	34.80
Red Bluff	88	8	112	66	2433	1753	46	0.00	9.23	23.91	24.63
Willows	N/A	N/A	N/A	N/A	N/A	N/A	N/A	N/A	N/A	N/A	N/A
Oroville	85	7	103	65	2295	1632	38	0.00	8.77	30.84	31.72
Marysville	83	7	107	60	1972	1471	36	0.00	7.14	22.23	22.88
Sacramento	81	6	104	57	1812	1348	33	0.00	6.68	20.82	21.35
<b>San Joaquin Valley</b>											
Stockton	80	4	99	59	1566	1402	28	0.00	7.89	13.76	14.14
Modesto	83	5	100	63	1825	1720	25	0.00	7.13	12.84	13.19
Merced Macready	85	8	105	64	2025	1502	29	0.00	7.01	12.20	12.59
Madera	85	8	106	61	2025	1585	19	0.00	1.78	11.75	12.10
Fresno	89	7	106	71	2669	2013	26	0.00	6.59	11.32	11.57
Lemoore	87	9	108	64	2234	1607	22	0.00	4.30	7.72	7.95
Visalia	84	5	102	66	2321	1763	26	0.00	5.15	10.77	10.99
Bakersfield	91	8	105	73	2818	2086	20	0.00	2.78	6.36	6.51
<b>Cascade Sierra</b>											
Alturas	73	7	100	42	806	344	61	0.00	5.91	13.46	14.22
Mount Shasta	77	10	99	50	1068	449	70	0.00	18.76	42.35	43.48
Blue Canyon	80	11	92	67	1132	534	66	0.00	30.97	63.40	65.00
Yosemite Valley	N/A	N/A	N/A	N/A	N/A	N/A	N/A	N/A	N/A	N/A	N/A
<b>South Coast</b>											
Santa Maria	65	1	80	53	360	205	25	0.00	6.89	13.80	14.05
Santa Barbara	67	1	82	58	560	378	17	0.00	7.32	17.43	17.89
Oxnard	67	1	78	58	609	418	13	0.00	2.82	14.40	14.71
Riverside	83	3	99	63	2015	1630	16	0.00	4.54	12.15	12.50
Los Angeles	70	0	79	62	845	736	14	0.00	5.12	12.58	12.92
San Diego	75	4	83	67	1268	915	31	0.23	4.75	10.18	10.42
<b>Southeast Interior</b>											
Bishop	82	6	106	54	1776	1280	8	0.00	1.69	4.92	5.21
Daggett	92	4	108	75	3308	2654	13	0.00	0.85	3.74	4.08
Lancaster	89	7	108	68	2469	1836	14	0.00	1.37	7.17	7.43
Thermal	90	0	107	74	3872	3240	9	0.16	0.96	2.85	3.22
Blythe	92	-2	108	76	4076	3626	9	0.08	1.23	3.16	3.85
Imperial	92	-1	107	76	3762	3400	1	0.00	0.69	2.88	3.46

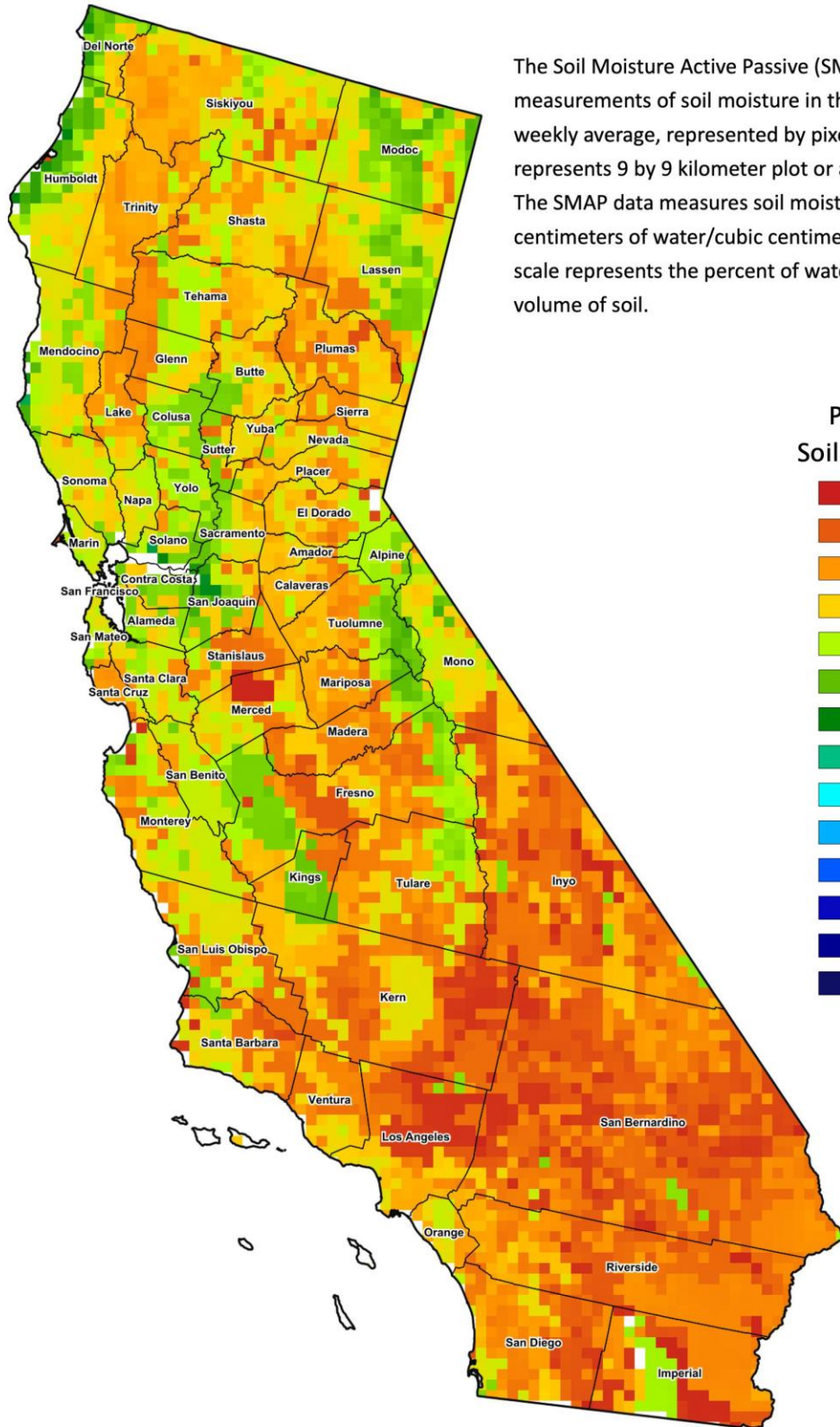
<sup>1</sup> Rain or melted snow/ice.

<sup>2</sup> Normal periods 1980-2010 used in departure from normal calculations.

<sup>3</sup> Total number of days with precipitation events this season.

Data retrieved from NOAA and NWS. Calculated by USDA NASS.

All rights reserved.



The Soil Moisture Active Passive (SMAP) provides measurements of soil moisture in the root zone as a weekly average, represented by pixels. Each pixel represents 9 by 9 kilometer plot or about 20,000 acres. The SMAP data measures soil moisture in cubic centimeters of water/cubic centimeters of soil. The scale represents the percent of water in a given volume of soil.

