



California Crop Weather

Cooperating with the California Department of Food and Agriculture
Pacific Region • P.O. Box 1258 • Sacramento, CA 95812 • (916) 738-6600 • (855) 270-2722 FAX • www.nass.usda.gov/ca

WEEK ENDING: August 8, 2021
RELEASED: August 9, 2021

FREQUENCY: Weekly
VOL. 42 NO. 19

WEATHER

Temperature lows for California ranged from the low 40s to low 70s in the mountains, high 40s to low 70s along the coast, low 50s to low 90s in the desert, and mid 50s to mid 70s in the valley. Temperature highs for the state ranged from high 50s to mid 100s along the coast, high 70s to high 90s in the mountains, high 80s to high 100s in the valley, and high 90s to low 120s in the desert.

FIELD CROPS

Across the Central Valley, **cotton** plants were blooming and bolls were developing. Some **corn** fields were harvested. Corn for silage was in various stages of maturity. The earliest corn for silage plantings were beginning to be harvested. In Tulare County, **dry bean** fields were being treated for weeds and pests. **Alfalfa** was in the third cutting. **Sudan** was being cut, dried and baled for hay. **Sorghum** fields were cultivated for weeds. In Fresno County, alfalfa harvest was behind schedule due to lack of water. In the Sacramento Valley, **rice** was maturing ahead of schedule due to above normal day time temperatures. Alfalfa continued to be cut, dried and baled. Corn fields were being monitored for pests.

FRUIT CROPS

Stone fruit orchard clean-up and irrigation continued. **Peaches**, **nectarines**, and **apricots** continued to ripen rapidly due to extreme temperatures. Freestone and clingstone peaches, nectarines, **plums**, **pears**, and **pluots** were harvested. Branches with heavy fruit loads were braced. **Kiwifruit**, **pomegranates**, and **persimmons** began to show fruit setting. Topping continued on apricots. Older, less productive **cherry** orchards were removed following harvest. **Grapes** continued to develop. Table grape varieties and Gala **apples** were harvested. **Pummelo**, **tangelo**, **lemon**, **lime**, and **grapefruit** harvests were still underway. Valencia **oranges** were harvested. Citrus groves were sprayed with sunscreen protection to prevent sunburn exposure on fruit and foliage. **Olives** continued to develop.

NUT CROPS

Final irrigation efforts in nut orchards continued. **Almond**, **walnut**, and **pistachio** orchards needed more water because of the excessive heat. Old walnut orchards were removed. Almond harvest has begun with some shaking and picking up the nuts from the fields.

VEGETABLE CROPS

In the Central Valley, processing **tomato** harvest continued. In Fresno County, **carrot** harvest continued with average quality. In Stanislaus County, **melons** were harvested. **Sweet potatoes** and **peppers** continued to grow. In Tulare County, spring **lettuce**, melons, **onions**, **eggplants**, **zucchini**, and **herbs** were harvested. New **squash** and bell peppers continued to develop. Sweet **corn**, **cucumbers**, peppers, tomatoes, and watermelons were harvested for sale at local markets and roadside stands.

LIVESTOCK

Rangeland and non-irrigated pasture were in poor to very poor condition. Irrigated range remained in good to excellent condition. Some livestock were moved to areas with better grazing and water conditions, while some were relocated due to fire evacuations. Cattle supplemental feeding continued. Bees were active in melon and squash fields.

CALIFORNIA CROP WEATHER – WEEK ENDING AUGUST 8, 2021

STATIONS	TEMPERATURE				GROWING DEGREE HOURS AT 60°F BASE		RAIN DAYS	PRECIPITATION ¹			
	Average for Week Ending Aug 8, 2021	Departure from Normal ²	High	Low	This Year	Normal Year ²	This Season	This Week	This Season	Normal Season ²	Normal Year ²
					Jan 1- Aug 8, 2021	Jan 1- Aug 8, 2021	Oct 1- Aug 8, 2021	Week Ending Aug 8, 2021	Oct 1- Aug 8, 2021	Oct 1- Aug 8	Oct 1- Sept 30
	-- Degrees Fahrenheit --				-- Number --		-- Days ³ --	-- Inches of Precipitation --			
North Coast											
Eureka WFO	58	0	66	50	18	0	104	0.01	24.54	39.47	40.53
Ukiah	77	3	103	53	1410	883	51	0.00	13.47	36.81	37.61
Santa Rosa	67	0	89	50	642	523	44	0.00	12.87	35.86	36.51
Napa State Hospital	65	0	81	48	508	386	41	0.00	7.48	20.04	20.52
Central Coast											
San Francisco	64	0	74	55	446	253	40	0.00	7.84	20.45	20.79
San Jose	69	-2	82	56	746	855	33	0.00	5.33	14.67	15.02
Salinas	64	1	74	55	341	216	38	0.00	5.81	12.64	12.91
Monterey	64	3	73	57	305	47	39	0.00	7.57	15.89	16.23
Paso Robles	77	3	106	51	1304	940	22	0.00	6.74	12.47	12.87
Sacramento Valley											
Redding	81	-1	105	60	2238	1621	52	0.00	13.82	33.83	34.80
Red Bluff	81	0	103	61	2227	1610	46	0.00	9.23	23.88	24.63
Willows	N/A	N/A	N/A	N/A	N/A	N/A	N/A	N/A	N/A	N/A	N/A
Oroville	82	3	102	65	2124	1500	38	0.00	8.77	30.78	31.72
Marysville	78	1	102	59	1811	1352	36	0.00	7.14	22.19	22.88
Sacramento	78	2	100	59	1671	1238	33	0.00	6.68	20.81	21.35
San Joaquin Valley											
Stockton	75	-1	97	55	1421	1287	28	0.00	7.89	13.76	14.14
Modesto	77	-2	97	59	1667	1587	25	0.00	7.13	12.83	13.19
Merced Macready	80	3	101	60	1853	1383	29	0.00	7.01	12.20	12.59
Madera	81	3	104	58	1856	1459	19	0.00	1.78	11.75	12.10
Fresno	86	3	107	68	2464	1854	26	0.00	6.59	11.32	11.57
Lemoore	83	5	106	62	2050	1481	22	0.00	4.30	7.71	7.95
Visalia	81	1	98	63	2154	1623	26	0.00	5.15	10.77	10.99
Bakersfield	87	3	105	70	2603	1921	20	0.00	2.78	6.36	6.51
Cascade Sierra											
Alturas	68	1	97	43	713	300	61	0.00	5.91	13.37	14.22
Mount Shasta	71	3	96	47	948	394	70	0.00	18.76	42.28	43.48
Blue Canyon	76	6	87	66	1001	464	66	0.00	30.97	63.35	65.00
Yosemite Valley	N/A	N/A	N/A	N/A	N/A	N/A	N/A	N/A	N/A	N/A	N/A
South Coast											
Santa Maria	63	-1	74	50	318	177	25	0.00	6.89	13.79	14.05
Santa Barbara	66	0	80	52	504	336	17	0.00	7.32	17.40	17.89
Oxnard	65	-1	74	56	560	376	13	0.00	2.82	14.39	14.71
Riverside	82	2	104	62	1856	1490	16	0.00	4.54	12.12	12.50
Los Angeles	69	0	78	63	772	666	14	0.00	5.12	12.57	12.92
San Diego	72	1	81	65	1158	831	30	0.00	4.52	10.18	10.42
Southeast Interior											
Bishop	80	3	104	53	1623	1165	8	0.00	1.69	4.89	5.21
Daggett	94	5	114	72	3079	2454	13	0.00	0.85	3.68	4.08
Lancaster	85	3	109	59	2264	1682	14	0.00	1.37	7.15	7.43
Thermal	97	7	122	71	3661	3025	8	0.00	0.80	2.81	3.22
Blythe	103	9	121	85	3871	3387	8	0.00	1.15	3.03	3.85
Imperial	97	4	119	78	3534	3168	1	0.00	0.69	2.79	3.46

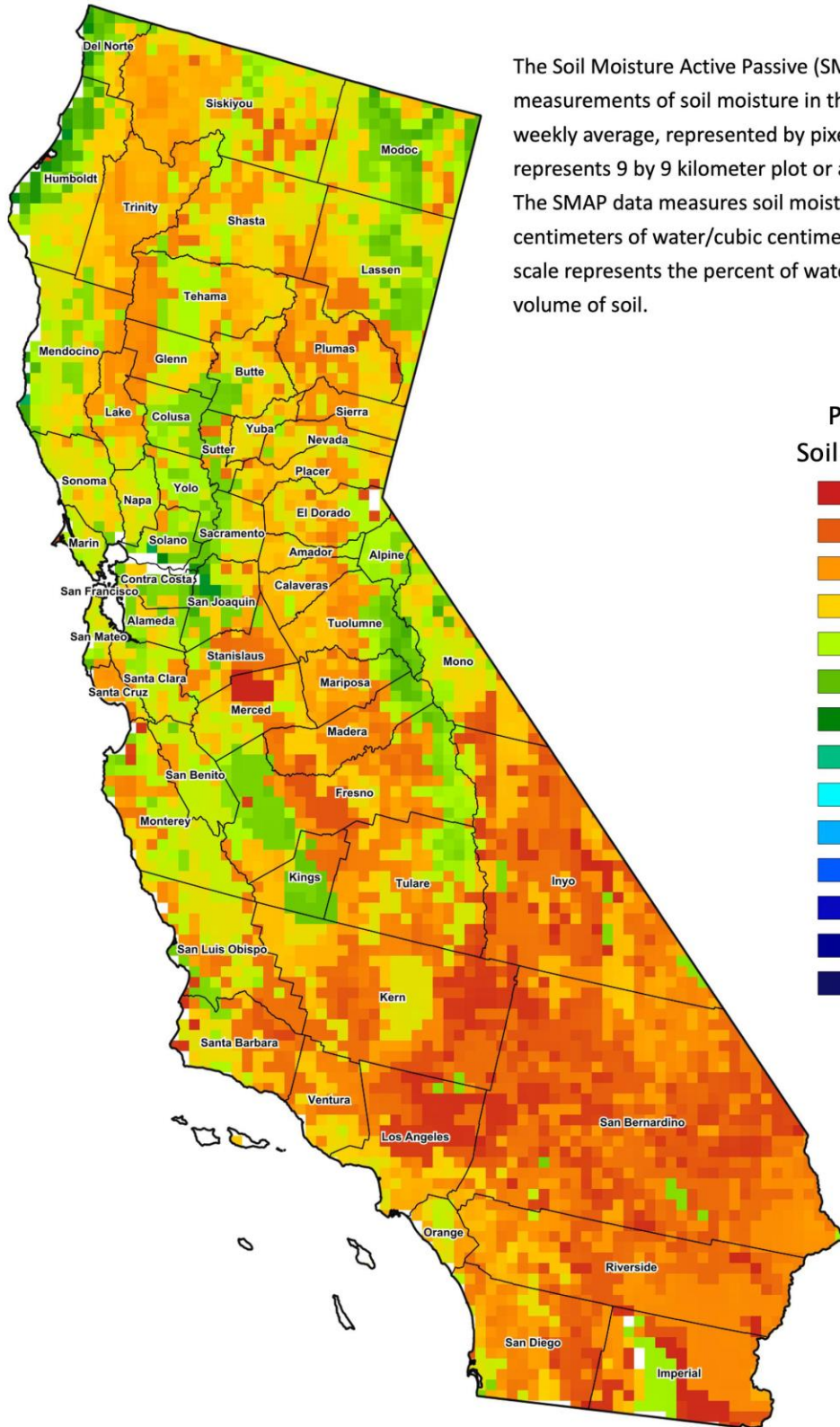
¹ Rain or melted snow/ice.

² Normal periods 1980-2010 used in departure from normal calculations.

³ Total number of days with precipitation events this season.

Data retrieved from NOAA and NWS. Calculated by USDA NASS.

All rights reserved.



The Soil Moisture Active Passive (SMAP) provides measurements of soil moisture in the root zone as a weekly average, represented by pixels. Each pixel represents 9 by 9 kilometer plot or about 20,000 acres. The SMAP data measures soil moisture in cubic centimeters of water/cubic centimeters of soil. The scale represents the percent of water in a given volume of soil.

Percent Soil Moisture

- 0%
- 5%
- 10%
- 15%
- 20%
- 25%
- 30%
- 35%
- 40%
- 45%
- 50%
- 55%
- 60%
- >65%