



California Crop Weather

Cooperating with the California Department of Food and Agriculture

Pacific Region • P.O. Box 1258 • Sacramento, CA 95812 • (916) 738-6600 • (855) 270-2722 FAX • www.nass.usda.gov/ca

WEEK ENDING: July 18, 2021
RELEASED: July 19, 2021

FREQUENCY: Weekly
VOL. 42 NO. 16

WEATHER

Temperature lows for California ranged from mid 40s to mid 70s in the mountains, low 50s to low 70s along the coast, low 50s to low 80s in the valley, and high 50s to high 80s in the desert. Temperature highs for the state ranged from high 50s to mid 100s along the coast, high 70s to low 100s in the mountains, mid 80s to low 110s in the valley, and mid 90s to mid 110s in the desert. Weather data for this week's publication does not include data from Sunday, July 18, 2021, since this data was unavailable.

FIELD CROPS

With high temperatures across the state, irrigation continued to be a priority for row crops. In Tulare County, growers turned on irrigation systems to keep soil moist to support growth. **Alfalfa** fields were being cut, dried, and baled for hay. **Cotton** plantings continued to develop. The extreme heat dried out many crops and newer **corn** crops needed more irrigation. **Beans** continued to grow and the earliest plantings were blooming. In Sutter County, **wheat** harvest continued. In Stanislaus County, some stands of alfalfa were blooming and other stands were being cut, dried and baled.

FRUIT CROPS

Stone fruit orchards increased irrigation due to drought conditions. Orchard sprays were applied to combat mites and Navel Orange Worm. Stone fruit harvest progressed rapidly due to extreme temperatures. High temperatures affected the ripening of **peaches, nectarines, apricots, and plums. Pomegranates** and **apples** were developing nicely. **Kiwifruit** continued to size well as fruit matured. **Grape** vineyards were treated for mildew, rot, and pests. Early varieties of grape harvest began this week. **Pummelo, tangelo, lemon, lime, and grapefruit** harvests continued. **Olive** and **persimmon** maturation continued.

NUT CROPS

Orchard preparation for harvest continued. Sun protection was provided for **walnuts. Almond** and **pistachio** orchards were developing well.

VEGETABLE CROPS

In Sacramento Valley, processing **tomatoes** were harvested. In Stanislaus County, late **melons** were planted and honeydew melons were harvested. Tomato fields were weeded. **Sweet potatoes** and **peppers** grew well. In Tulare County, spring **lettuce, melons, onions, eggplants, zucchini, and herbs** were harvested. Bell peppers continued to develop. In Southern California, **celery** was harvested.

LIVESTOCK

Rangeland and non-irrigated pasture were in poor to very poor condition. Irrigated range remained in good to excellent condition. Bees were active in melon, squash, and sunflower fields. Sheep grazed on old alfalfa fields and retired farmland. Cattle supplemental feeding continued. Wildfires burned across the state and forced localized large animal evacuations and damaged some range and AUM land in the northern counties.

CALIFORNIA CROP WEATHER – JULY 12 - 17, 2021 ⁴

STATIONS	TEMPERATURE				GROWING DEGREE HOURS AT 60°F BASE		RAIN DAYS	PRECIPITATION ¹			
	Average for Week Ending Jul 17, 2021 ⁴	Departure from Normal ²	High	Low	This Year	Normal Year ²	This Season	This Week	This Season	Normal Season ²	Normal Year ²
					Jan 1- Jul 17, 2021	Jan 1- Jul 17, 2021	Oct 1- Jul 17, 2021	Week Ending Jul 17, 2021 ⁴	Oct 1- Jul 17, 2021	Oct 1- Jul 17	Oct 1- Sept 30
	-- Degrees Fahrenheit --				-- Number --		-- Days ³ --	-- Inches of Precipitation --			
North Coast											
Eureka WFO	56	-2	62	51	NA	NA	NA	0.02	NA	NA	40.53
Ukiah	77	3	105	54	NA	NA	NA	0.00	NA	NA	37.61
Santa Rosa	65	-3	81	51	NA	NA	NA	0.00	NA	NA	36.51
Napa State Hospital	62	-3	73	52	NA	NA	NA	0.00	NA	NA	20.52
Central Coast											
San Francisco	63	-1	73	54	NA	NA	NA	0.00	NA	NA	20.79
San Jose	66	-5	80	53	NA	NA	NA	0.00	NA	NA	15.02
Salinas	61	-2	68	55	NA	NA	NA	0.00	NA	NA	12.91
Monterey	61	1	66	55	NA	NA	NA	0.00	NA	NA	16.23
Paso Robles	72	-2	104	51	NA	NA	NA	0.00	NA	NA	12.87
Sacramento Valley											
Redding	84	1	107	65	NA	NA	NA	0.00	NA	NA	34.80
Red Bluff	83	1	104	67	NA	NA	NA	0.00	NA	NA	24.63
Willow s	N/A	N/A	N/A	N/A	N/A	N/A	N/A	N/A	N/A	N/A	N/A
Oroville	80	0	100	61	NA	NA	NA	0.00	NA	NA	31.72
Marysville	76	-2	98	55	NA	NA	NA	0.00	NA	NA	22.88
Sacramento	72	-4	94	56	NA	NA	NA	0.00	NA	NA	21.35
San Joaquin Valley											
Stockton	73	-4	94	53	NA	NA	NA	0.00	NA	NA	14.14
Modesto	75	-4	96	56	NA	NA	NA	0.00	NA	NA	13.19
Merced Macready	80	2	102	60	NA	NA	NA	0.00	NA	NA	12.59
Madera	80	1	105	59	NA	NA	NA	0.00	NA	NA	12.10
Fresno	86	3	108	67	NA	NA	NA	0.00	NA	NA	11.57
Lemoore	84	5	109	62	NA	NA	NA	0.00	NA	NA	7.95
Visalia	86	5	104	69	NA	NA	NA	0.00	NA	NA	10.99
Bakersfield	90	6	109	73	NA	NA	NA	0.00	NA	NA	6.51
Cascade Sierra											
Alturas	71	4	102	46	NA	NA	NA	0.00	NA	NA	14.22
Mount Shasta	74	6	101	50	NA	NA	NA	0.00	NA	NA	43.48
Blue Canyon	74	4	91	62	NA	NA	NA	0.00	NA	NA	65.00
Yosemite Valley	N/A	N/A	N/A	N/A	N/A	N/A	N/A	N/A	N/A	N/A	N/A
South Coast											
Santa Maria	64	1	75	55	NA	NA	NA	0.00	NA	NA	14.05
Santa Barbara	67	1	75	59	NA	NA	NA	0.00	NA	NA	17.89
Oxnard	69	3	75	63	NA	NA	NA	0.00	NA	NA	14.71
Riverside	80	1	97	64	NA	NA	NA	0.00	NA	NA	12.50
Los Angeles	70	1	76	64	NA	NA	NA	0.00	NA	NA	12.92
San Diego	74	4	79	69	NA	NA	NA	0.00	NA	NA	10.42
Southeast Interior											
Bishop	82	4	105	58	NA	NA	NA	0.00	NA	NA	5.21
Daggett	96	7	115	78	NA	NA	NA	0.00	NA	NA	4.08
Lancaster	88	5	108	73	NA	NA	NA	0.00	NA	NA	7.43
Thermal	94	3	111	74	NA	NA	NA	0.00	NA	NA	3.22
Blythe	98	3	111	86	NA	NA	NA	0.00	NA	NA	3.85
Imperial	96	4	110	80	NA	NA	NA	0.00	NA	NA	3.46

¹ Rain or melted snow /ice.

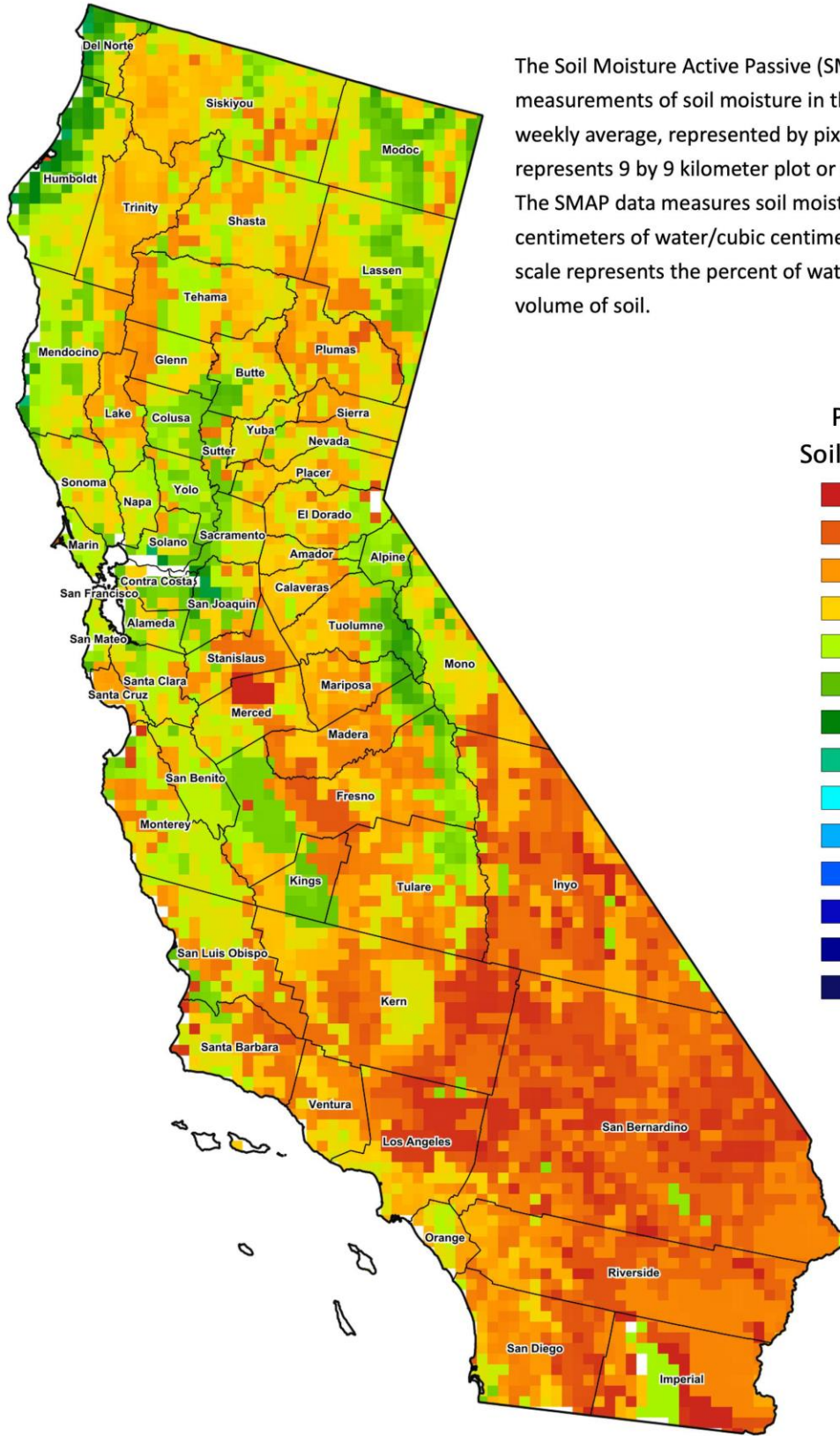
² Normal periods 1980-2010 used in departure from normal calculations.

³ Total number of days with precipitation events this season.

⁴ Data for Sunday, July 18, 2021 was not available and was not included in this week's calculations.

Data retrieved from NOAA and NWS. Calculated by USDA NASS.

All rights reserved.



The Soil Moisture Active Passive (SMAP) provides measurements of soil moisture in the root zone as a weekly average, represented by pixels. Each pixel represents 9 by 9 kilometer plot or about 20,000 acres. The SMAP data measures soil moisture in cubic centimeters of water/cubic centimeters of soil. The scale represents the percent of water in a given volume of soil.

