



# California Crop Weather

Cooperating with the California Department of Food and Agriculture  
Pacific Region • P.O. Box 1258 • Sacramento, CA 95812 • (916) 738-6600 • (855) 270-2722 FAX • [www.nass.usda.gov/ca](http://www.nass.usda.gov/ca)

**WEEK ENDING: June 20, 2021**  
**RELEASED: June 21, 2021**

**FREQUENCY: Weekly**  
**VOL. 42 NO. 12**

## WEATHER

Temperature highs ranged from high 50s to high 100s along the coast, mid 60s to high 90s in the mountains, mid 80s to low 110s in the valley, and low 100s to low 120s in the desert. Temperature lows ranged from mid 30s to mid 70s in the mountains, high 40s to low 70s along the coast, low 50s to low 90s in the desert, and mid 50s to mid 80s in the valley.

## FIELD CROPS

Across the state, weed control was a priority as temperatures rose and days became longer. In Tulare County, growers continued harvesting small grains. Most farmers had completed planting summer row crops. **Corn** plants were in the early vegetative stage. **Oat** and **alfalfa** fields were being cut, dried, and baled for hay. **Cotton** plantings were in the second and third leaf stage. Growers were turning on irrigation systems to keep soil conditions moist to support row crops. In the Central Valley, crops continued to mature with dry, sunny weather. Drought continues to be a concern.

## FRUIT CROPS

Stone fruit orchards continued to be thinned and were irrigated. Various fruit orchards were treated with insecticides and herbicides as needed. **Peaches**, **nectarines**, **apricots**, and **plums** were harvested. **Grapes** were sizing well. **Apple** bloom was ongoing. **Pomegranates** were progressing nicely. Increased **kiwifruit** irrigation was needed to lessen effects of high temperatures on developing fruit. **Pummelo**, **lemon**, **lime**, **tangelo**, and **grapefruit** harvests continued. Late Navel and Mandarin **orange** harvests continued to wind down. Citrus groves were thinned, topped, and skirted. **Olives** were maturing. **Strawberry** and **blueberry** harvests slowed in some areas of the state. **Boysenberry** and **blackberry** harvests continued.

## NUT CROPS

**Almond**, **walnut**, and **pistachio** orchards were irrigated. Almond orchard growth was good. Walnut and pistachio development was ongoing. Herbicide, fungicide, and insecticide applications were completed as needed.

## VEGETABLE CROPS

Summer vegetables continued to be planted and were developing well with warm temperatures. In San Mateo County, **artichokes** and **peas** were harvested. Field fumigations for **brussels sprouts** were ongoing. In Riverside County, **bell peppers** were harvested. In San Joaquin County, sweet **corn** and **melons** were growing well. In Tulare County, spring **lettuce**, **onions**, **eggplants**, **zucchini**, and **herbs** were harvested.

## LIVESTOCK

Rangeland and non-irrigated pasture were reported to be in poor to very poor condition. Irrigated range remained in good to excellent condition. Bees were pollinating kiwifruit, melons, squash, and sunflowers. Sheep grazed on old alfalfa fields and retired farmland. Water continued to be trucked in to fill drying foothill stock ponds.

**CALIFORNIA CROP WEATHER – WEEK ENDING JUNE 20, 2021**

STATIONS	TEMPERATURE				GROWING DEGREE HOURS AT 60°F BASE		RAIN DAYS	PRECIPITATION <sup>1</sup>			
	Average for Week Ending Jun 20, 2021	Departure from Normal <sup>2</sup>	High	Low	This Year	Normal Year <sup>2</sup>	This Season	This Week	This Season	Normal Season <sup>2</sup>	Normal Year <sup>2</sup>
					Jan 1- Jun 20, 2021	Jan 1- Jun 20, 2021	Oct 1- Jun 20, 2021	Week Ending Jun 20, 2021	Oct 1- Jun 20, 2021	Oct 1- Jun 20	Oct 1- Sept 30
-- Degrees Fahrenheit --				-- Number --		-- Days <sup>3</sup> --	-- Inches of Precipitation --				
<b>North Coast</b>											
Eureka WFO	58	2	66	50	12	0	97	0.19	24.31	39.12	40.53
Ukiah	76	8	109	50	492	212	51	0.00	13.47	36.69	37.61
Santa Rosa	71	5	102	48	281	143	44	0.00	12.87	35.78	36.51
Napa State Hospital	69	4	100	49	220	92	41	0.02	7.48	20.02	20.52
<b>Central Coast</b>											
San Francisco	70	8	90	56	194	57	40	0.57	7.84	20.43	20.79
San Jose	72	3	95	55	307	313	33	0.00	5.33	14.66	15.02
Salinas	65	3	85	52	120	40	36	0.00	5.77	12.62	12.91
Monterey	65	5	79	52	87	0	38	0.00	7.56	15.86	16.23
Paso Robles	78	9	109	54	492	286	22	0.00	6.74	12.45	12.87
<b>Sacramento Valley</b>											
Redding	85	9	110	57	954	552	51	0.00	13.81	33.63	34.80
Red Bluff	85	9	111	59	988	576	46	0.00	9.23	23.66	24.63
Willows	N/A	N/A	N/A	N/A	N/A	N/A	N/A	N/A	N/A	N/A	N/A
Oroville	82	6	108	56	922	552	38	0.00	8.77	30.61	31.72
Marysville	81	7	110	54	795	499	36	0.00	7.14	22.11	22.88
Sacramento	81	8	107	56	765	445	33	0.00	6.68	20.78	21.35
<b>San Joaquin Valley</b>											
Stockton	79	6	108	55	584	470	28	0.00	7.89	13.75	14.14
Modesto	80	5	107	57	703	651	25	0.00	7.13	12.81	13.19
Merced Macready	82	8	109	56	746	511	29	0.00	7.01	12.19	12.59
Madera	82	7	109	55	743	543	19	0.00	1.78	11.71	12.10
Fresno	87	9	111	65	1086	735	26	0.00	6.59	11.29	11.57
Lemoore	84	10	111	60	824	567	22	0.00	4.30	7.71	7.95
Visalia	84	8	109	62	949	634	26	0.00	5.15	10.73	10.99
Bakersfield	88	10	110	63	1169	766	20	0.00	2.78	6.34	6.51
<b>Cascade Sierra</b>											
Alturas	66	6	97	34	117	2	59	0.00	5.82	12.85	14.22
Mount Shasta	70	8	98	43	220	21	68	0.10	18.52	41.53	43.48
Blue Canyon	73	11	88	50	232	18	64	0.00	30.90	63.07	65.00
Yosemite Valley	N/A	N/A	N/A	N/A	N/A	N/A	N/A	N/A	N/A	N/A	N/A
<b>South Coast</b>											
Santa Maria	66	5	92	52	102	9	25	0.00	6.89	13.75	14.05
Santa Barbara	66	3	84	57	159	64	17	0.00	7.32	17.34	17.89
Oxnard	65	2	77	58	204	78	13	0.00	2.82	14.34	14.71
Riverside	81	9	104	61	822	596	13	0.00	4.36	11.97	12.50
Los Angeles	67	1	80	60	347	225	13	0.00	5.00	12.52	12.92
San Diego	69	3	87	61	538	330	29	0.00	4.51	10.13	10.42
<b>Southeast Interior</b>											
Bishop	82	10	107	50	576	331	6	0.00	1.63	4.64	5.21
Daggett	97	14	117	71	1440	1051	9	0.00	0.61	3.11	4.08
Lancaster	89	13	113	64	946	600	12	0.00	1.33	7.03	7.43
Thermal	96	10	119	65	1936	1545	7	0.00	0.35	2.62	3.22
Blythe	100	11	120	74	1991	1714	4	0.00	0.88	2.62	3.85
Imperial	96	9	119	69	1802	1585	1	0.00	0.69	2.53	3.46

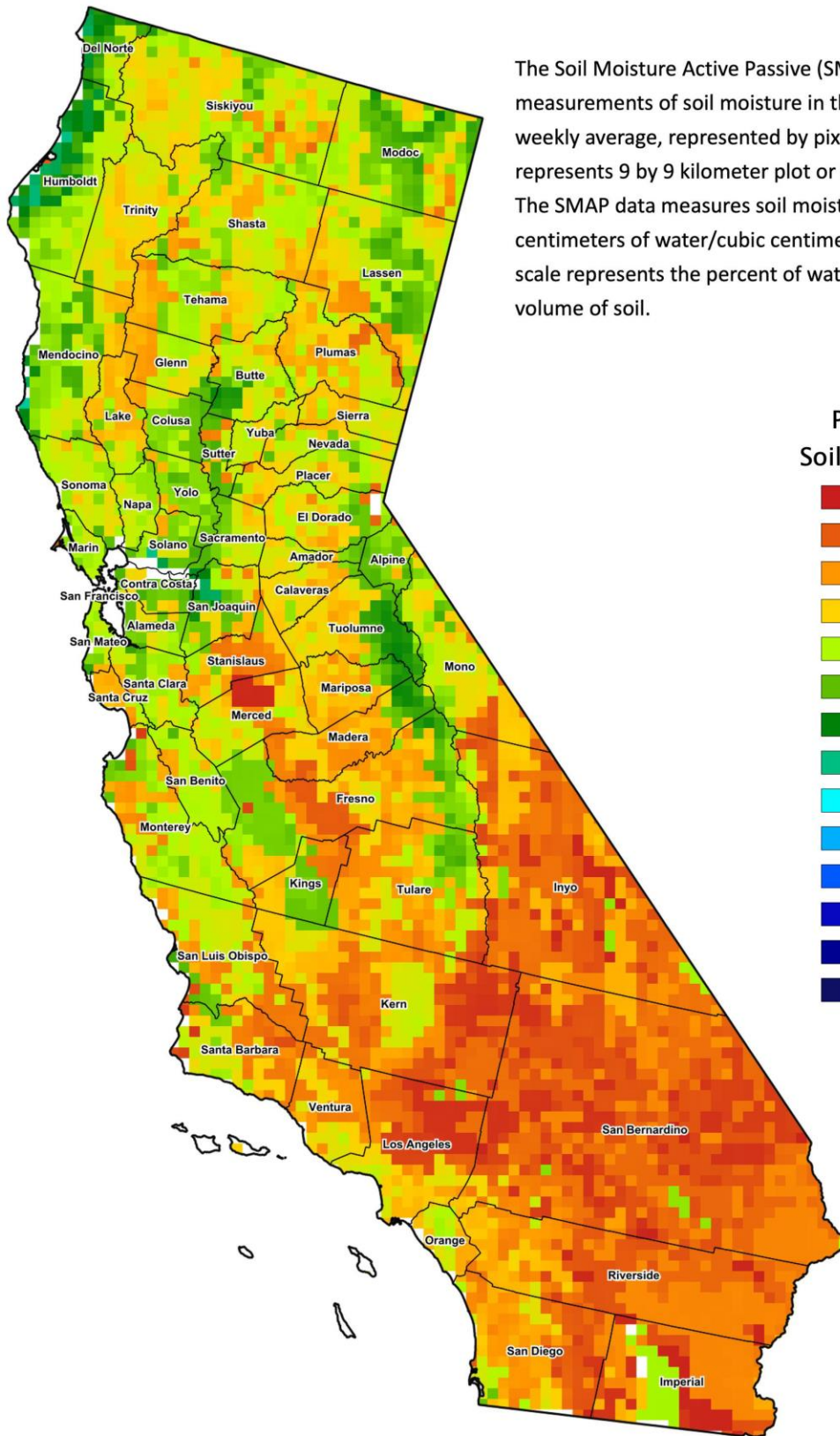
<sup>1</sup> Rain or melted snow/ice.

<sup>2</sup> Normal periods 1980-2010 used in departure from normal calculations.

<sup>3</sup> Total number of days with precipitation events this season.

Data retrieved from NOAA and NWS. Calculated by USDA NASS.

All rights reserved.



The Soil Moisture Active Passive (SMAP) provides measurements of soil moisture in the root zone as a weekly average, represented by pixels. Each pixel represents 9 by 9 kilometer plot or about 20,000 acres. The SMAP data measures soil moisture in cubic centimeters of water/cubic centimeters of soil. The scale represents the percent of water in a given volume of soil.

**Percent Soil Moisture**

- 0%
- 5%
- 10%
- 15%
- 20%
- 25%
- 30%
- 35%
- 40%
- 45%
- 50%
- 55%
- 60%
- >65%