

Hawaii Wildfires - 2023

Assessment Period: August 8-18, 2023

Publication Date: August 18, 2023

USDA NASS

Disaster Monitoring Team



Event Summary

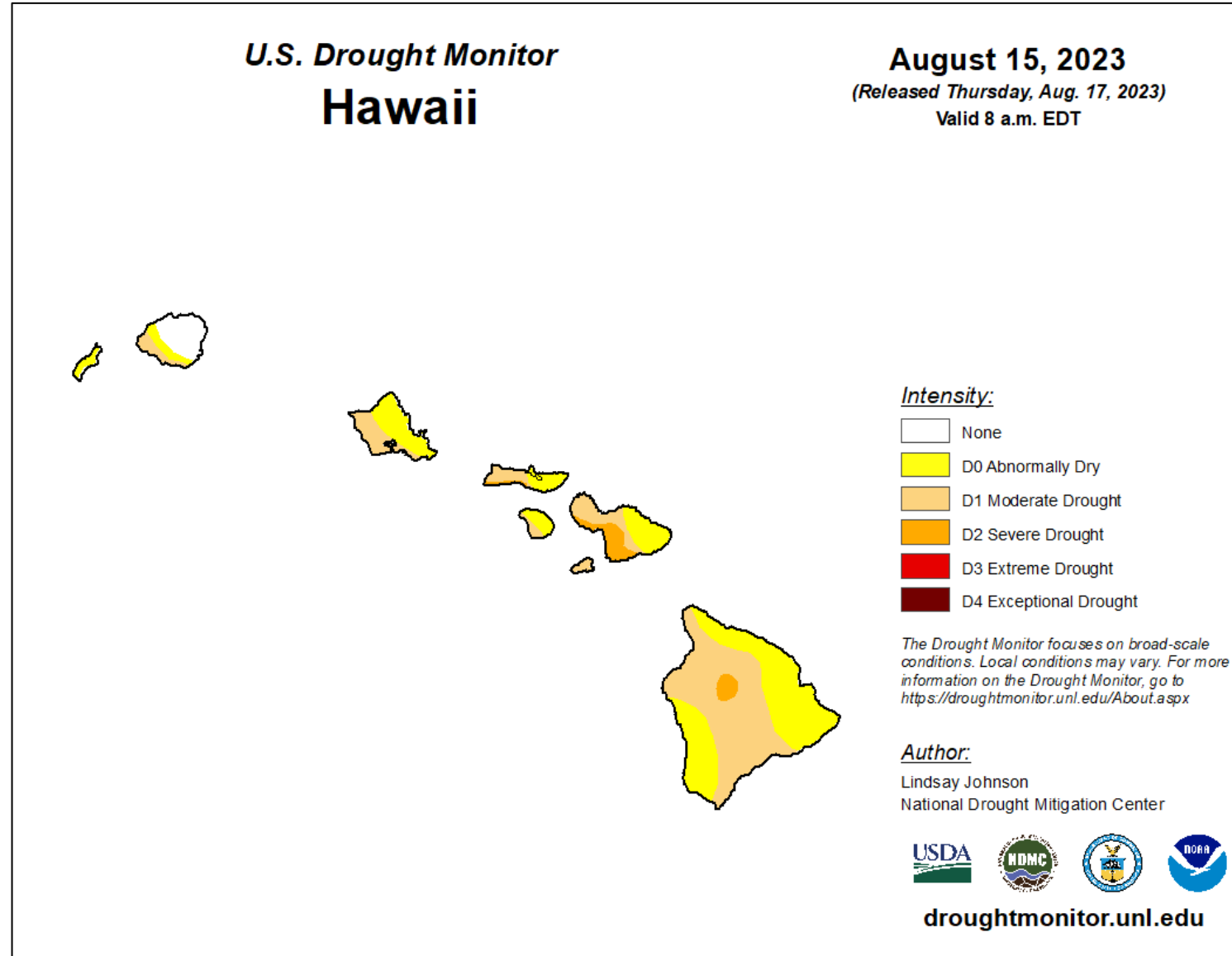
- **Location:** Hawaii, U.S.
- **Event:** Hawaii Wildfires
(<https://gdacs.org/Wildfires/report.aspx?eventtype=WF&eventid=1016286&episodeid=1>)
 - A series of wildfires broke out in the state of Hawaii, primarily on the island of Maui.
 - Due partly to Hurricane Dora south of Hawaii and to dry, gusty wind conditions created by a high-pressure area north of Hawaii.
- **Timeframe:** August 8-10, 2023
 - August 8, 2023: Emergency declaration, activation of the Hawaii National Guard and Hawaii Emergency Management Agency
 - August 9: Hawaii issued a state of emergency for entire state
 - August 10: Federal major Disaster Declaration

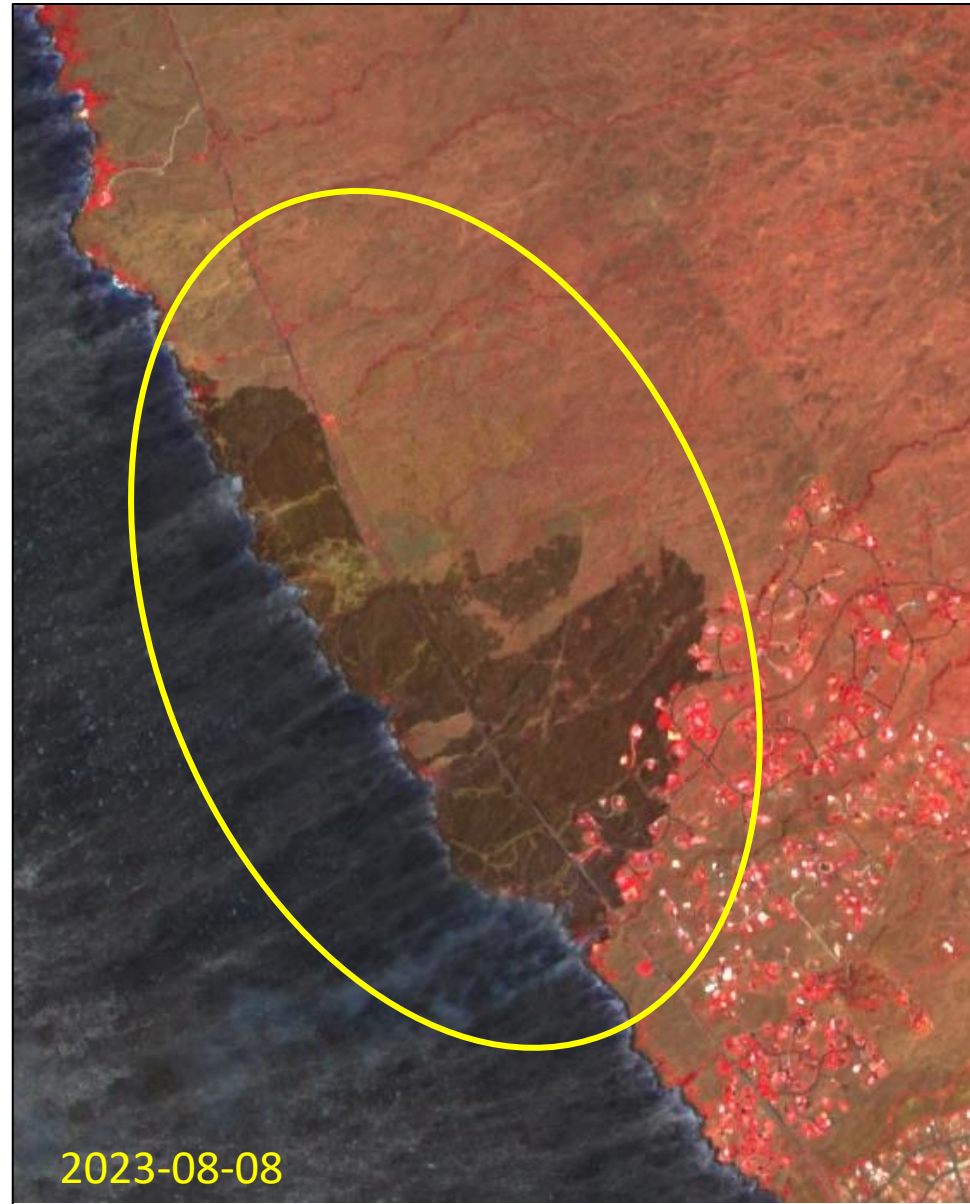
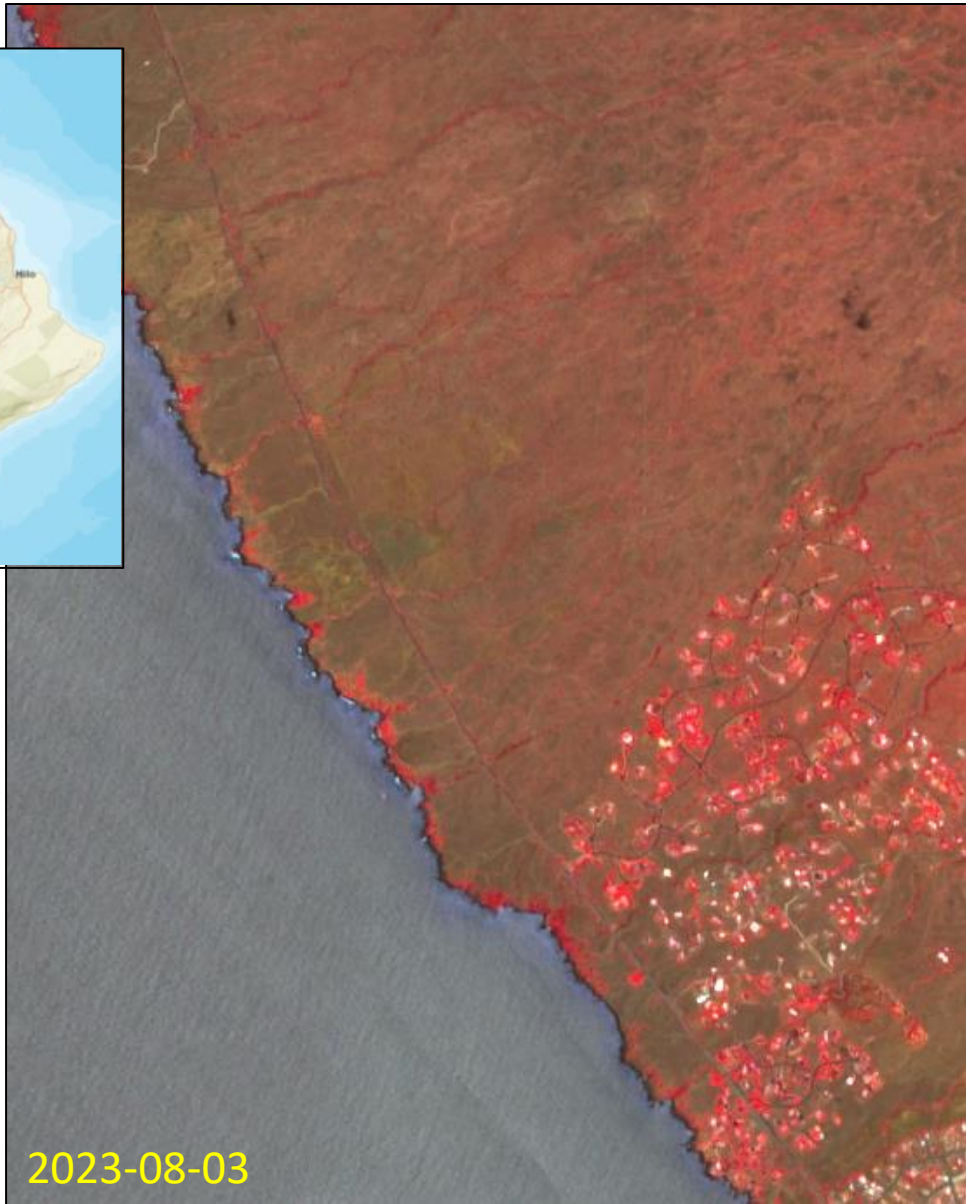




Aerial view of Lahaina on the island of Maui on August 8 (Photo Credit: Civil Air Patrol).

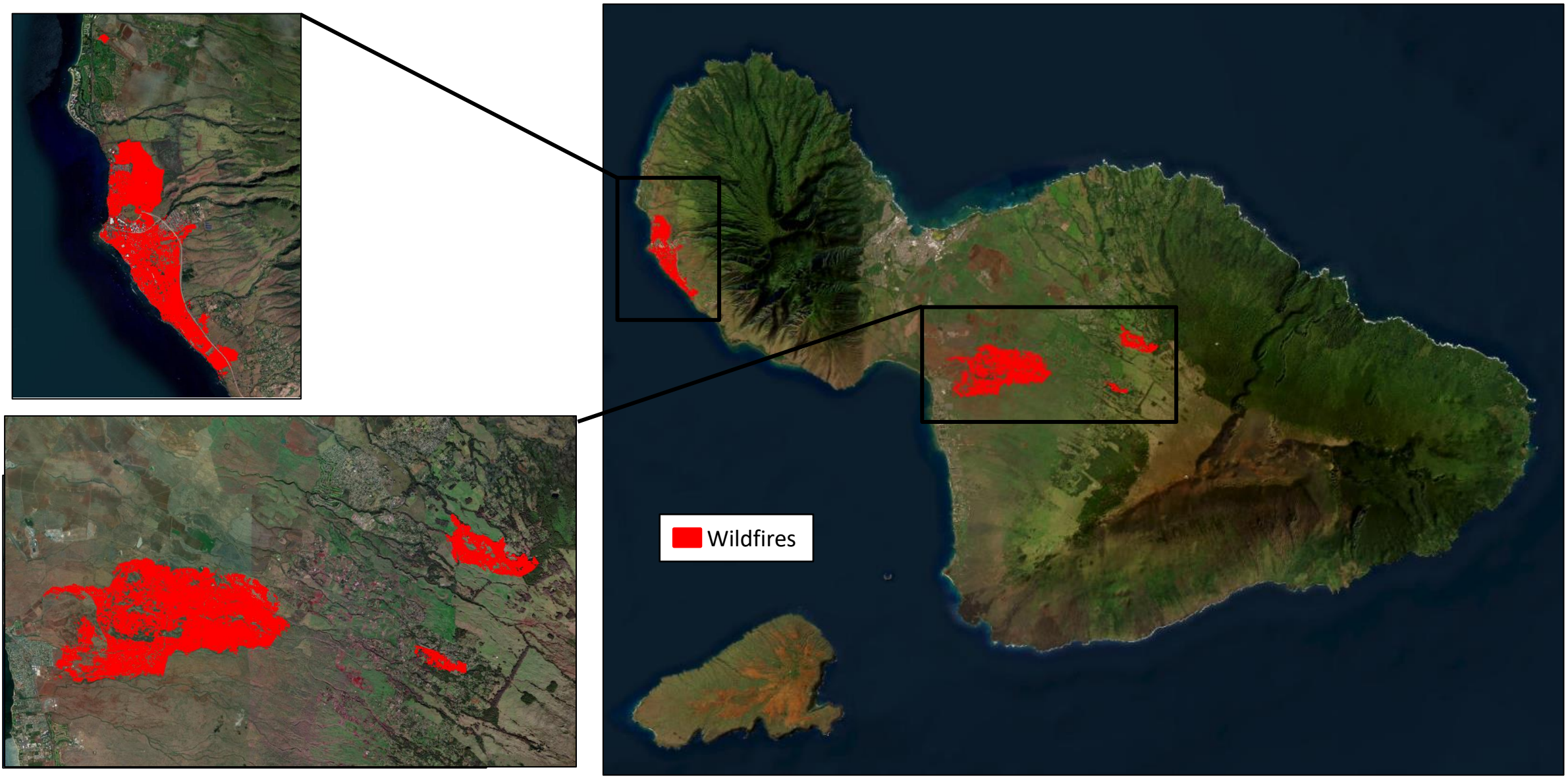
Drought Conditions





Hawaii, HI
Pre- and Post- Event Sentinel-2 Imagery



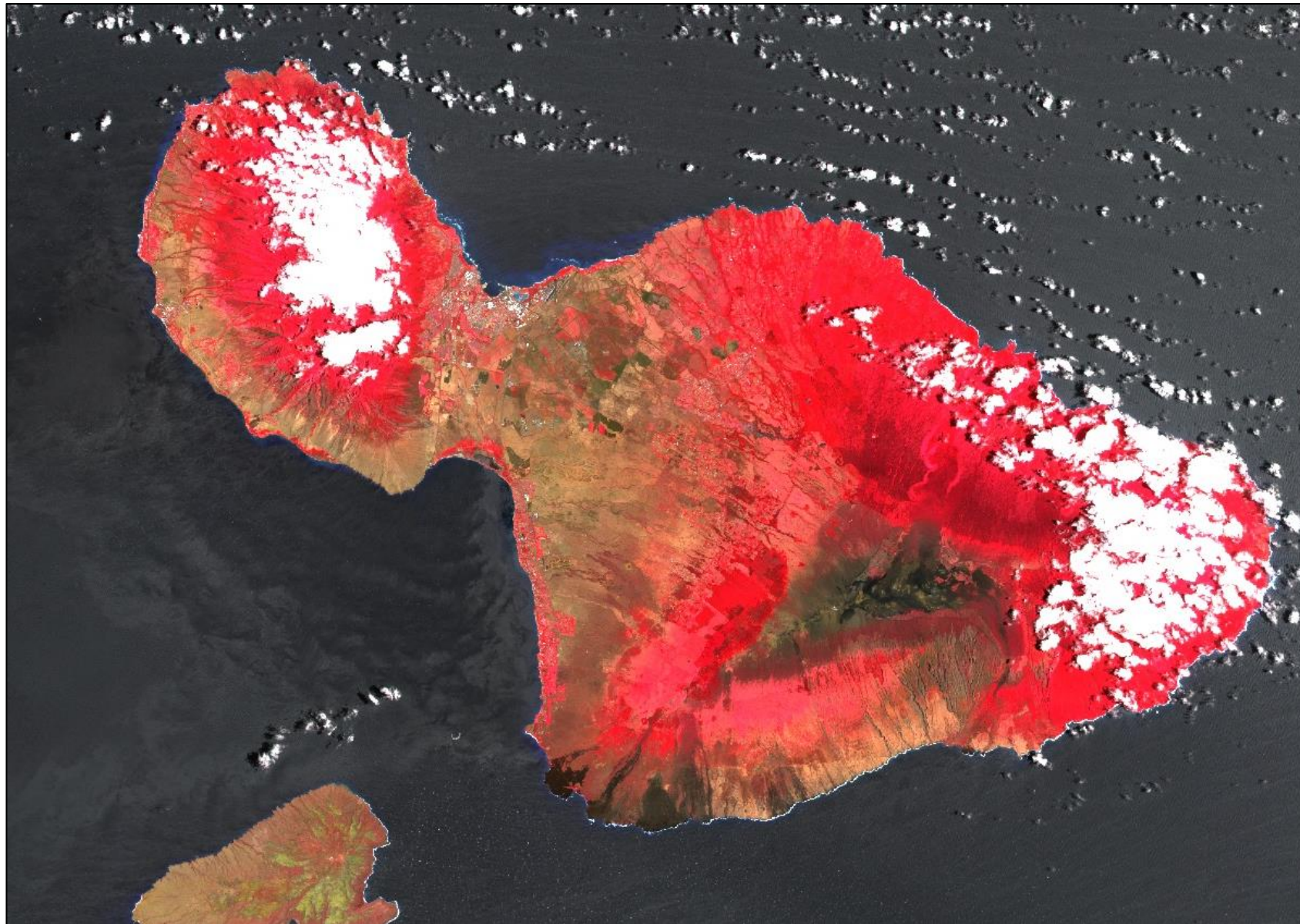


Maui, HI

Fire extents derived from Sentinel-2 Normalized Burn Ratio (NBR), August 8-18, 2023.



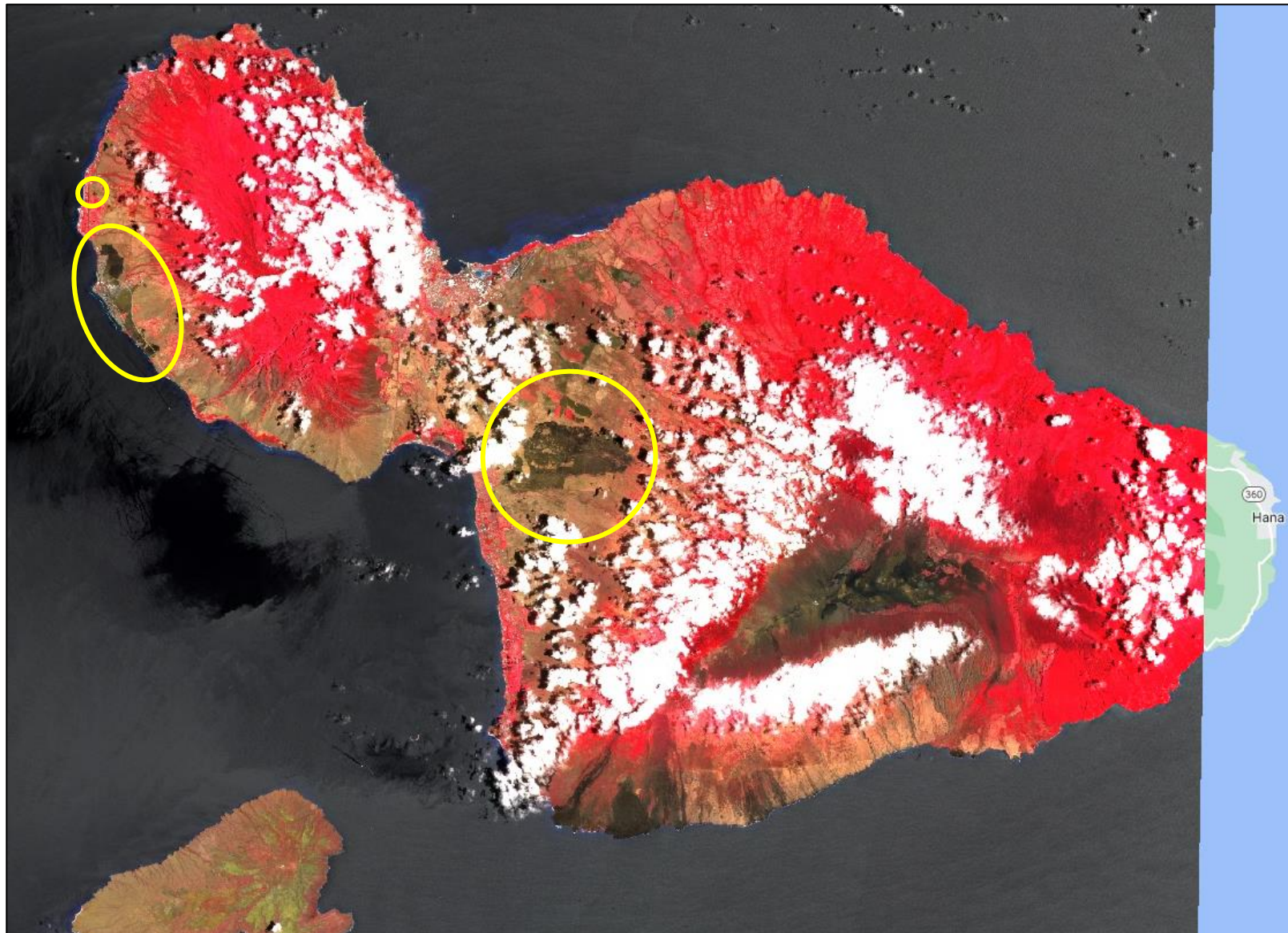
Pre-Event
Imagery



Maui, HI, August 8, 2023
Sentinel-2 Imagery



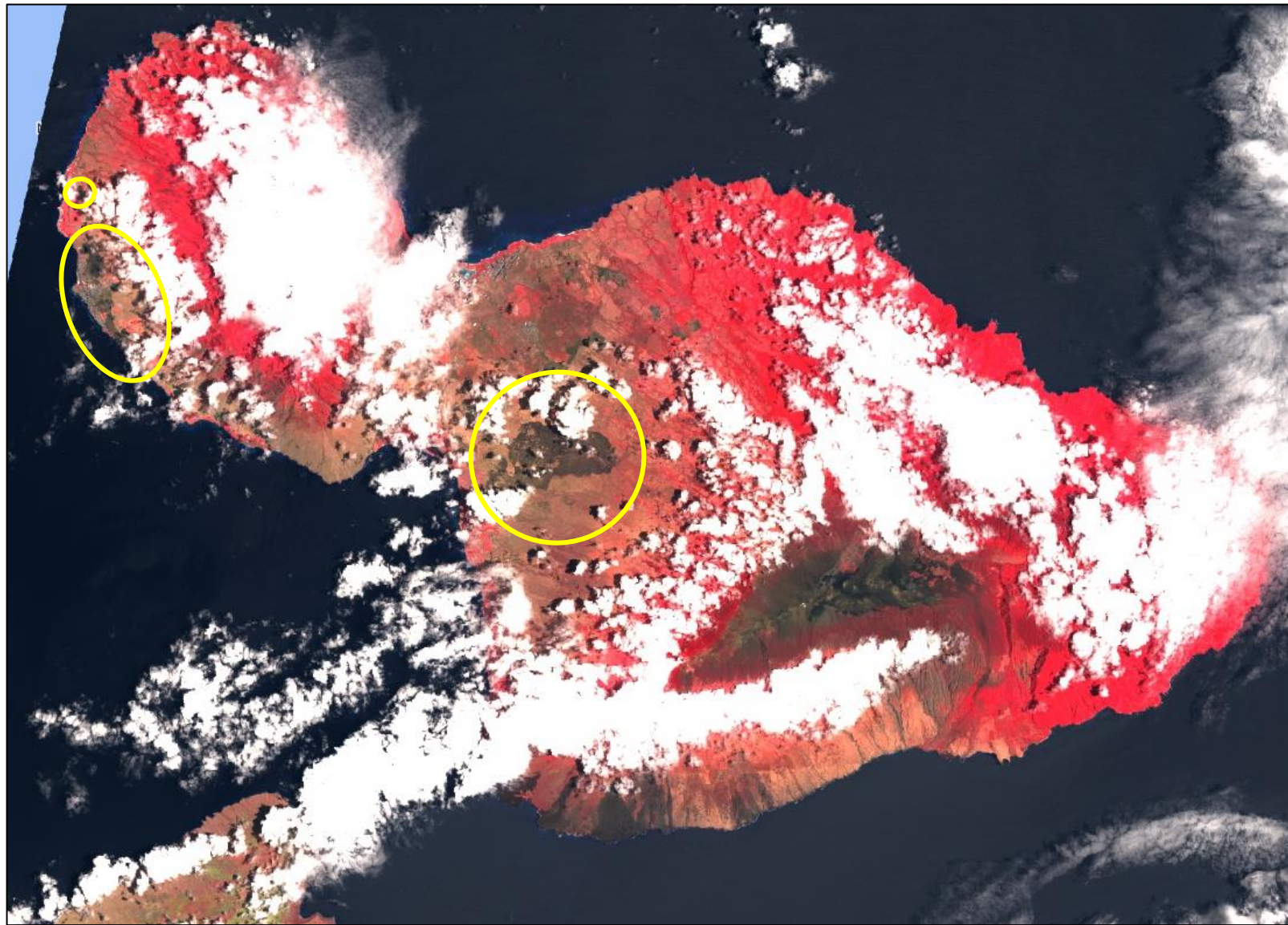
Post-Event
Imagery



Maui, HI, August 13, 2023
Sentinel-2 Imagery



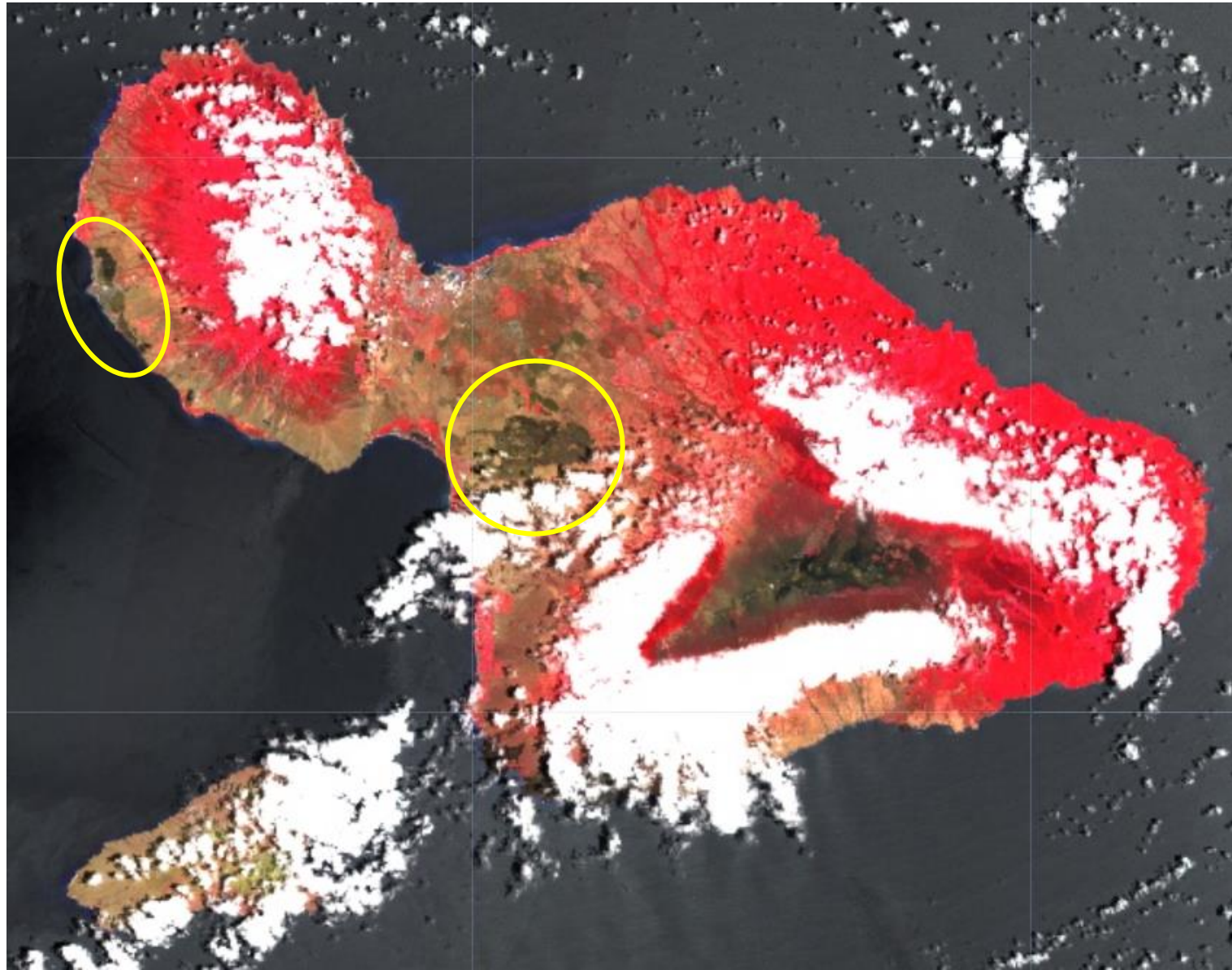
Post-Event
Imagery



Maui, HI, August 15, 2023
Landsat 9 Imagery

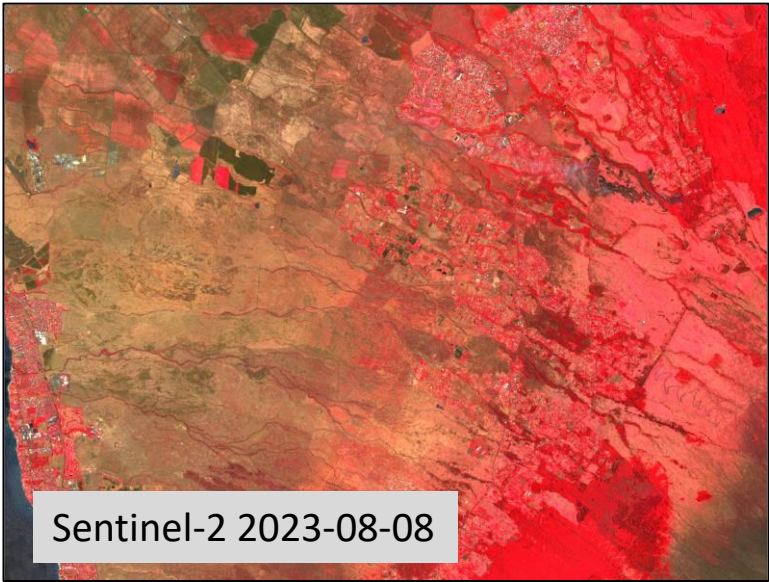


Post-Event
Imagery

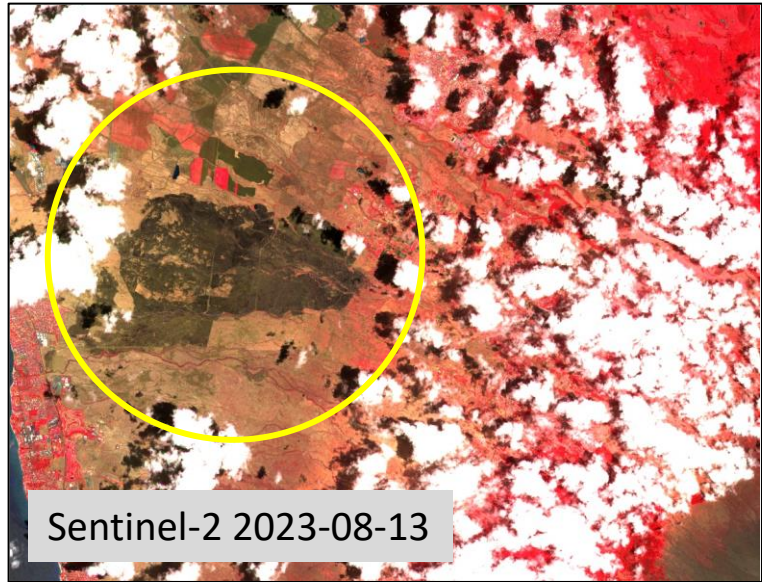


Maui, HI, August 18, 2023
Sentinel-2 Imagery

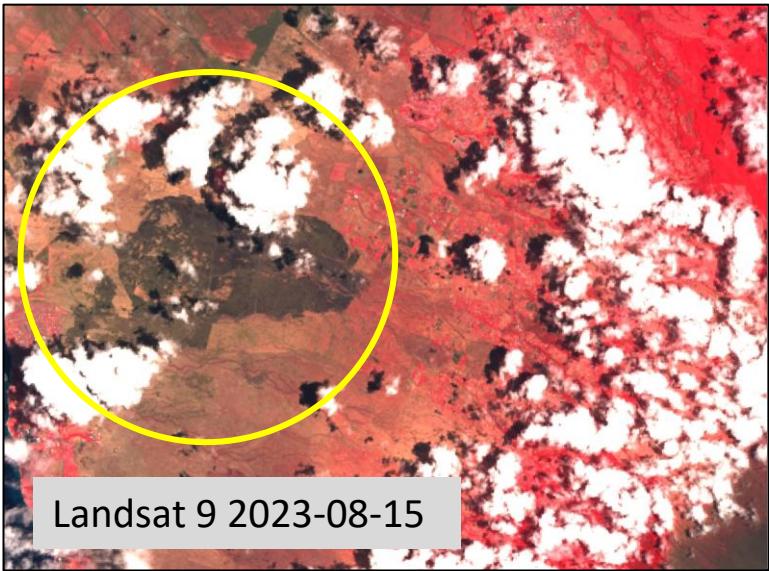




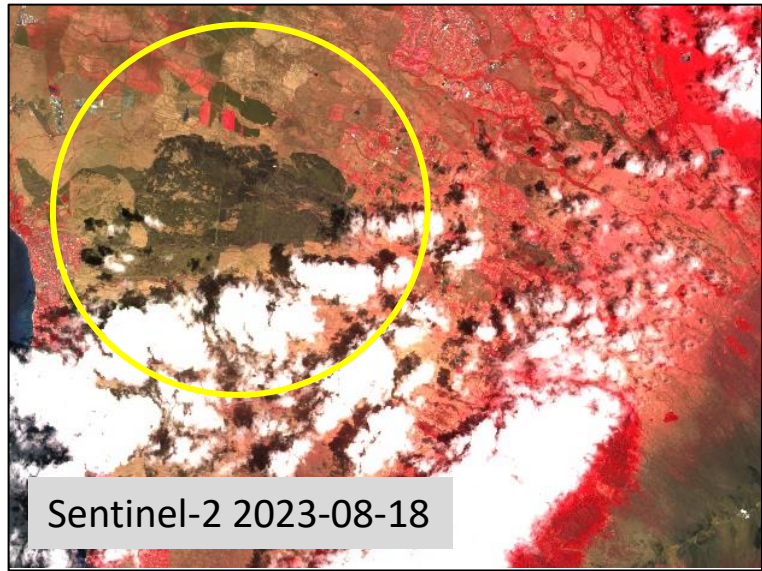
Sentinel-2 2023-08-08



Sentinel-2 2023-08-13



Landsat 9 2023-08-15

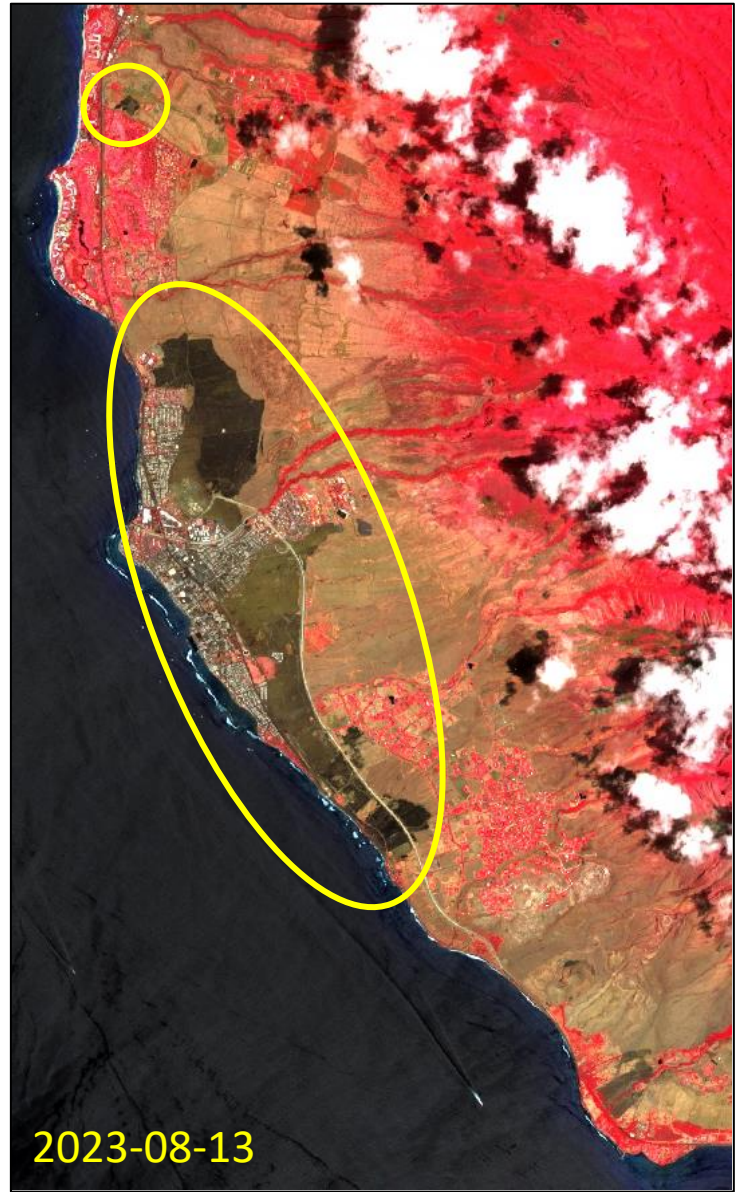
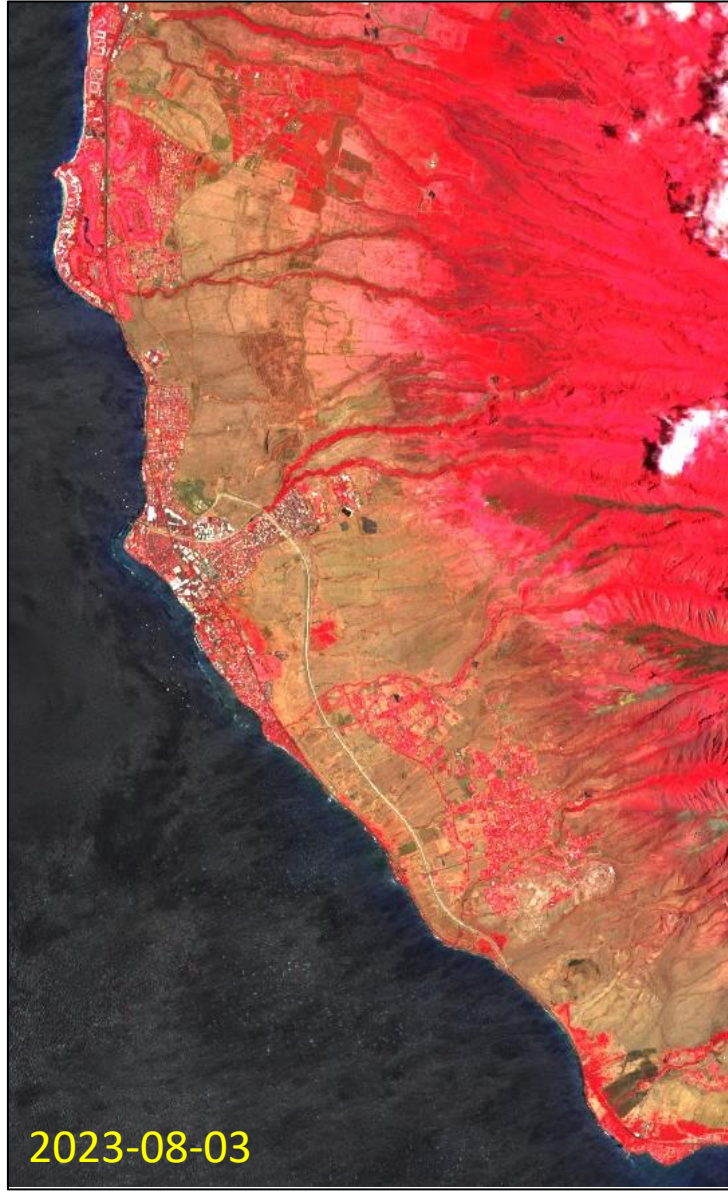
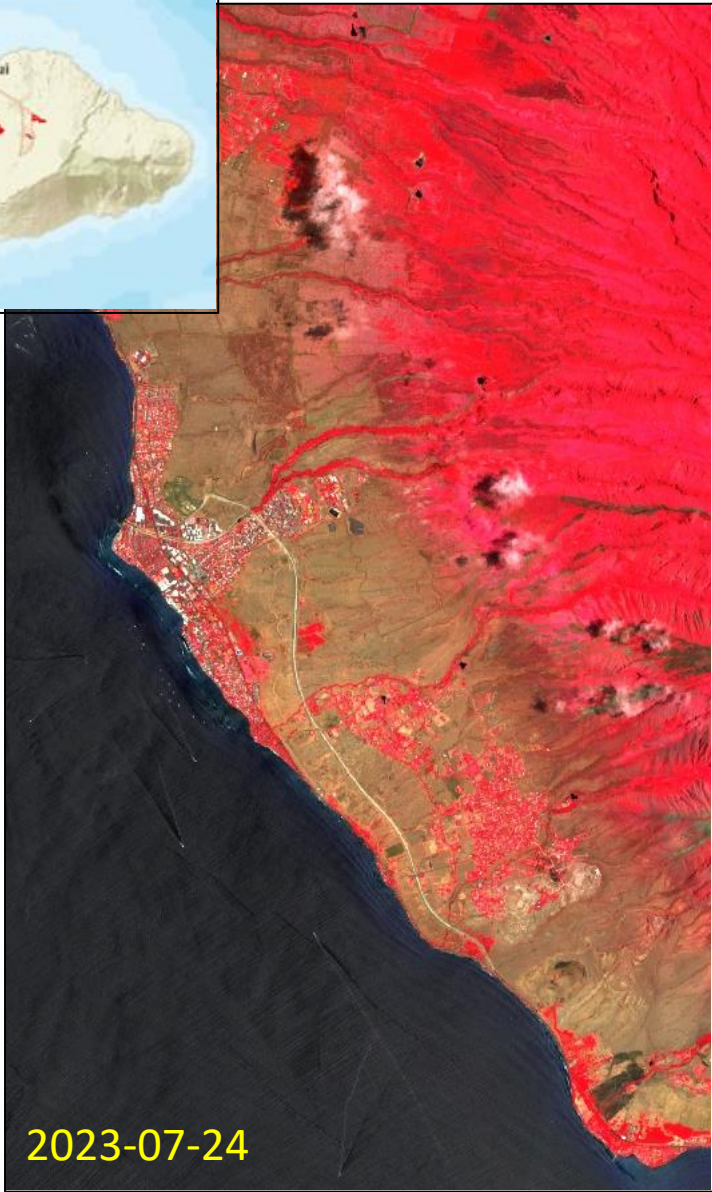


Sentinel-2 2023-08-18



Maui, HI
Pre- and Post- Event Sentinel-2 Imagery





Maui, HI
Pre- and Post- Event Sentinel-2 Imagery



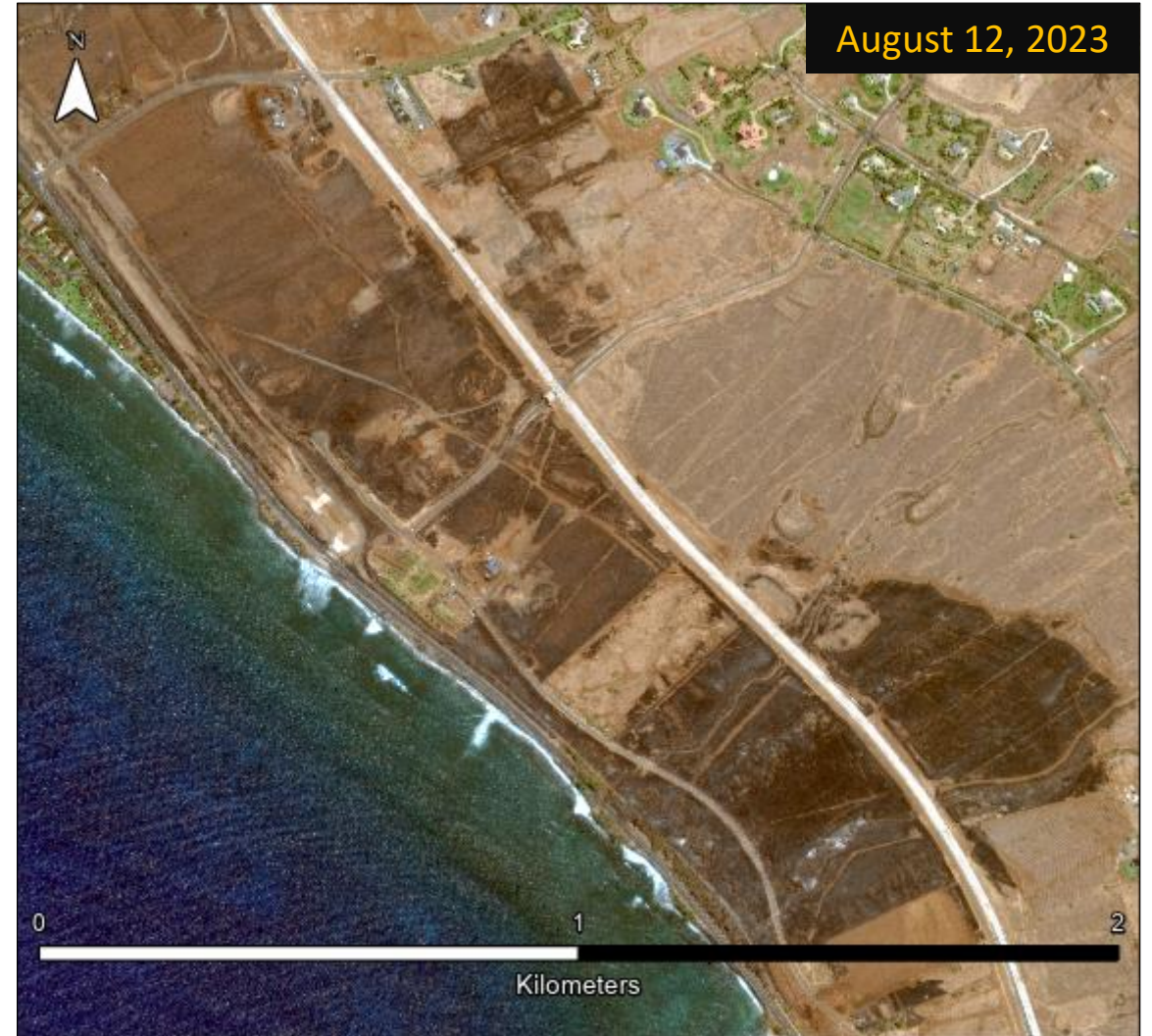


Maui, HI
Pre- and Post- Event Sentinel-2 Imagery
Banana Fields





Launiupoko, Maui, HI: Assessed Fire Damage to Pastures/Rangelands



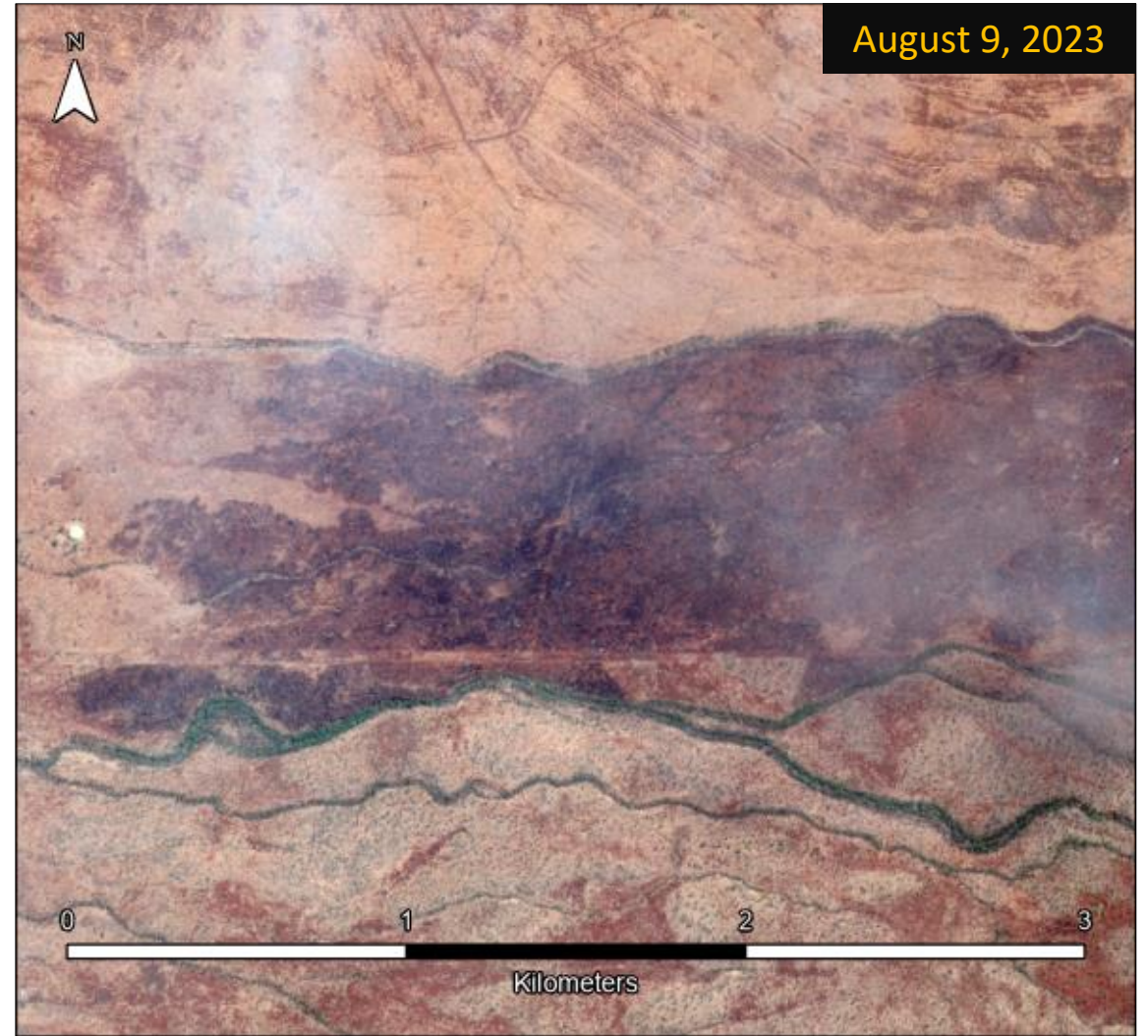
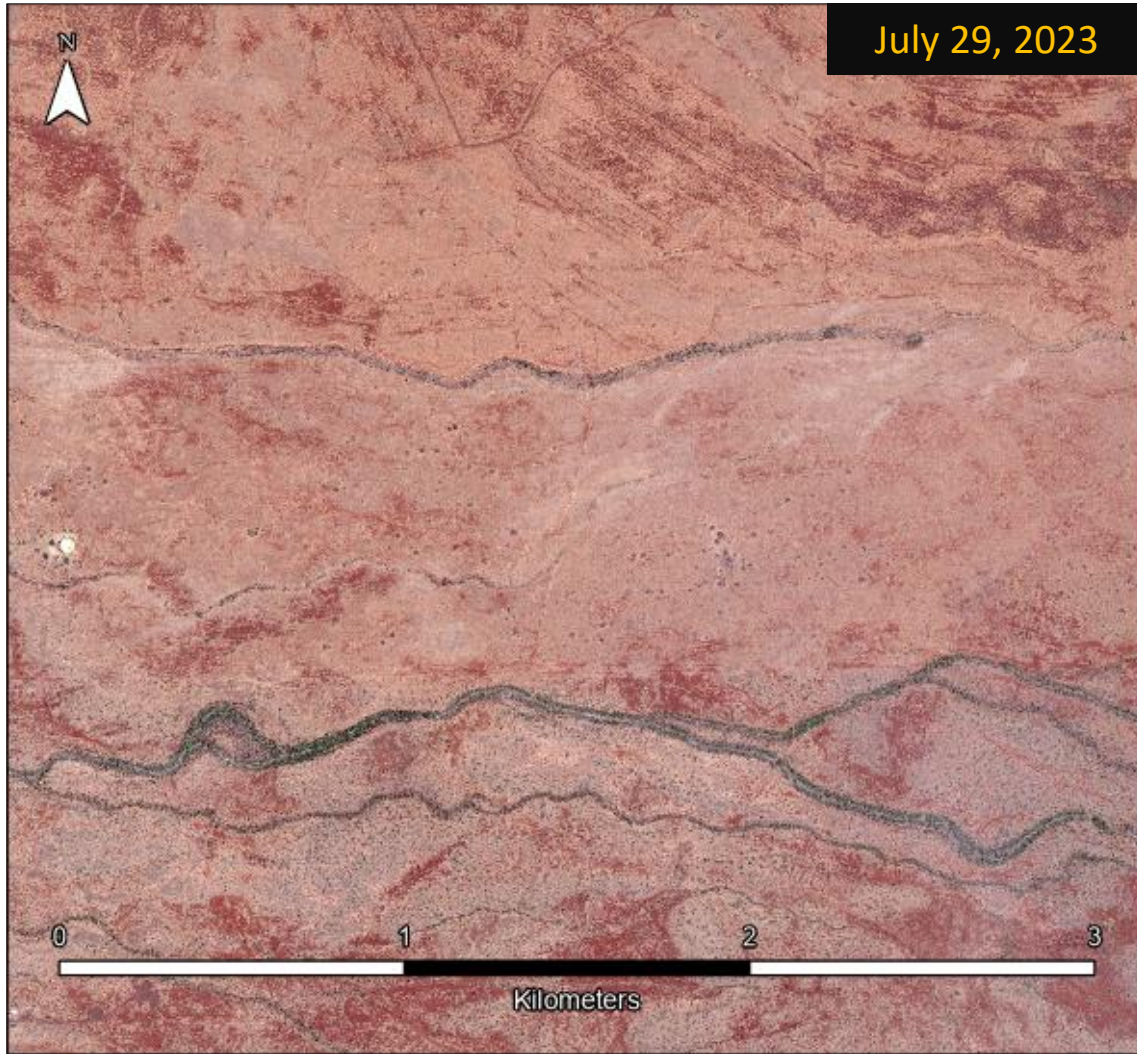
WorldView-3 © 2023 Maxar

WorldView-2 © 2023 Maxar





Kihei, Maui, HI: Assessed Fire Damage to Pastures/Rangelands

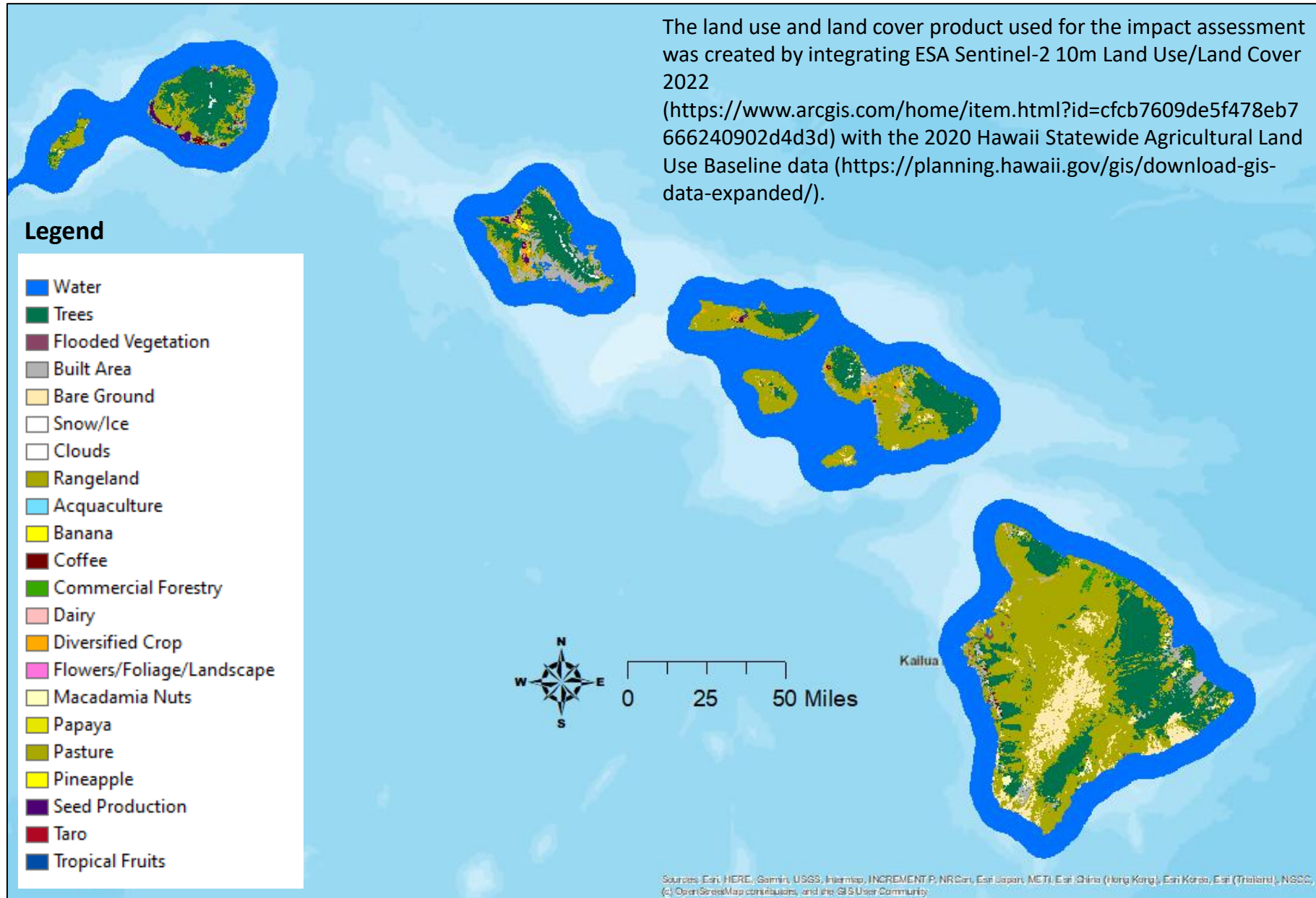


GeoEye-1 © 2023 Maxar

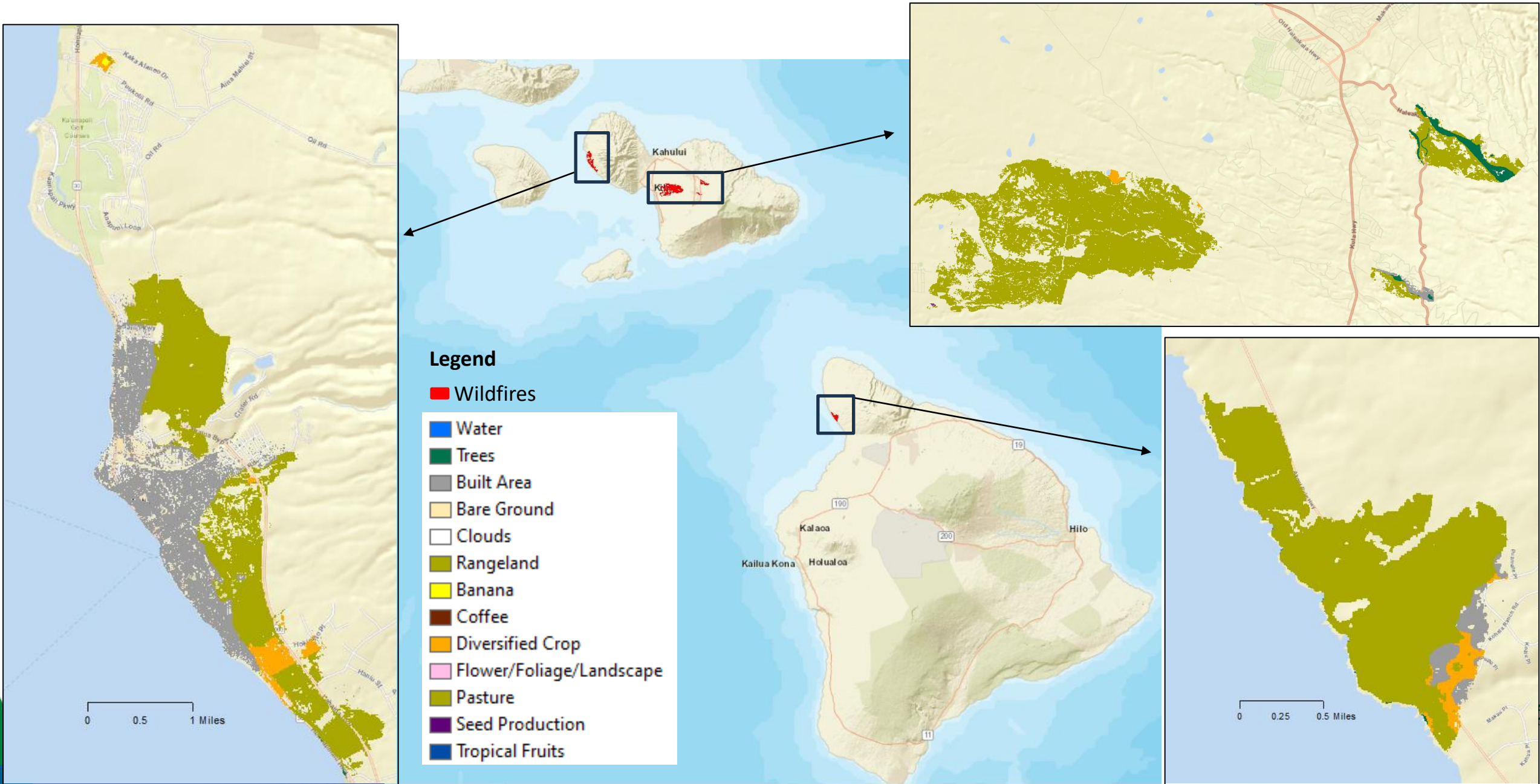
GeoEye-1 © 2023 Maxar



Land use and land cover product used for impact assessment



Land cover impacted by wildfires identified from Sentinel-2 MSI Normalized Burn Ratio (NBR) between August 8-18, 2023.



Land cover impacted by wildfires identified from Sentinel-2 MSI Normalized Burn Ratio (NBR) between August 8-13, 2023.

Crops	Acres Impacted	Acres State Total*	%
Diversified Crop	155.53	65179.9	0.23
Rangeland	3720.31	1267150	0.28
Pasture	3160.89	764286	0.34

*Acres State Total calculated from land cover data products used in analysis.
Acres are not official NASS estimates.

