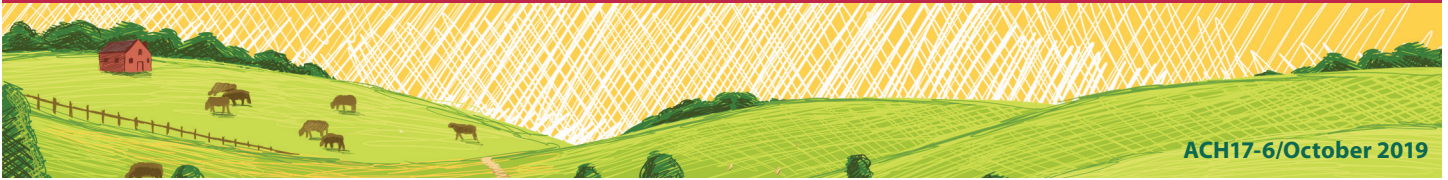


Fruit, Tree Nut, and Berry Production

Fruit acres down, tree nut and berry acres up, since 2012



ACH17-6/October 2019

U.S. fruit, tree nut, and berry sales amounted to \$28.6 billion in 2017, accounting for 7.4 percent of total U.S. agriculture sales. This was an increase of \$2.7 billion, or 10 percent, since 2012, the last time the Census of Agriculture was conducted. The number of acres producing these commodities was up 9 percent. Farms specializing in fruit, tree nut, and berry production on average had fewer acres and higher sales than farms overall. Fruit, tree nut, and berry growers are slightly older than U.S. producers overall.

109,994 farms



6 million acres



\$28.6 billion sales



Number and Location

Ten states accounted for 95 percent of sales and 92 percent of acres producing fruit, tree nuts, and berries in 2017. Just three states – California, Washington, and Florida – accounted for 86 percent of sales and 76 percent of acres.

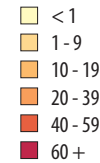
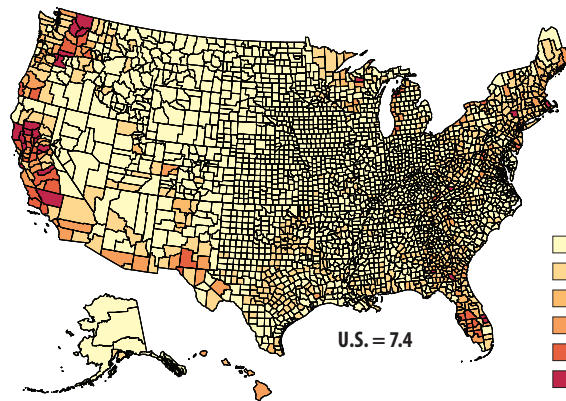
The number of acres producing fruit, tree nuts, and berries in 2017 was 9 percent higher than in 2012 (6.0 million acres in 2017 versus 5.5 million in 2012). The increase was driven by a 27 percent increase in tree nut acres and a 4 percent increase in berry acres.

	2017 acres	% change since 2012
Fruit		
Citrus	824,983	-6
Non-citrus	2,160,940	-2
Tree nuts	2,679,683	+27
Berries	302,198	+4
Total	5,967,804	+9

113,119

The number of blueberry (tame) acres in 2017, accounting for 37 percent of berry acres.

Fruit, Tree Nut, and Berry Sales as Percent of Agriculture Sales, by County, 2017



Top States	(\$ mil)
California	19,708.7
Washington	3,614.9
Florida	1,298.7
Oregon	612.1
Michigan	440.7
Georgia	421.8
New York	399.8
Texas	213.3
New Mexico	210.2
Wisconsin	177.4

Top U.S. Fruit, Tree Nut, and Berry Crops in Acres, 2017

Almonds	1,266,160	Almonds are 47 percent of tree nut acres, almost all in California.
Grapes	1,136,155	Grapes are 53 percent of noncitrus acres; 935,272 acres in California.
Pecans	553,276	Pecans are 21 percent of tree nut acres.
Walnuts	419,706	Walnut acreage increased 26 percent since 2012.
Apples	381,718	Apples are 18 percent of noncitrus acres; down 1 percent since 2012
Pistachios	344,614	Pistachios are 13 percent of tree nut acres; up 48 percent since 2012.
Mid/navel oranges	339,923	Oranges (mid, navel, and Valencia combined) are 73 percent of citrus acres. The next citrus fruit is tangerines, 9 percent of citrus acres but up 84 percent since 2012.
Valencia oranges	262,907	

SNAPSHOT

Fruit, Tree Nut, and Berry Producers, 2017

Number = 169,027*

	Fruit, Tree Nut, Berry	All U.S.
	(percent)	
Sex		
Male	62	64
Female	38	36
Age		
<35	6	8
35 - 64	57	58
65+	37	34
Years farming		
10 or less	33	27
11 or more	67	73
Lived on their farm	69	74
Worked off farm		
No days	37	39
1 to 199 days	26	21
200+ days	37	40
Primary occupation		
Farming	42	42
Other	58	58
Hispanic	9	3
With military service	12	11
Average age (years)	59.3	57.5

* Producers on 95,441 specialized fruit, tree nut, and berry farms as defined by the North American Industry Classification System (NAICS). More than half a farm's sales come from growing fruits, tree nuts, and berries. Data collected for up to four producers per farm.

About the Census

The Census of Agriculture, conducted once every five years, is a complete count of U.S. farms and ranches and the people who operate them. Results from the 2017 and earlier censuses are available at national, state, and county levels.

See the searchable database Quick Stats, the new Census Data Query Tool, downloadable PDF reports, maps, and a variety of topic-specific products.

www.nass.usda.gov/AgCensus

Producer Characteristics

The producers on farms specializing in fruit, tree nut, and berry production resemble U.S. producers overall in many characteristics but they are slightly older on average (59.3 years versus 57.5 years) and more likely to be Hispanic (9 percent compared with 3

percent for U.S. producers overall). Thirty-three percent have ten or fewer years of farming experience (compared with 27 percent of all U.S. producers). Thirty-eight percent are women.

The percent of fruit, tree nut, and berry producers with military service. **12**

Farm Characteristics

Three-fourths (76 percent) of farms specializing in fruit, tree nut, and berry production had sales and government payments of less than \$100,000 in 2017.

Economic Class

(sales and government payments)

	Fruit Tree Nut Berry Farms	All Farms
	(percent of total)	
< \$10,000	46	55
\$10,000 - \$99,999	32	26
\$100,000 - \$499,999	13	11
\$500,000 - \$999,999	4	4
\$1,000,000 +	5	4

\$1.5 billion

The amount of organic sales by fruit, tree nut, and berry farms, 20 percent of total U.S. organic agriculture sales.

Average Farm

Farms specializing in fruit, tree nut, and berry production on average have fewer acres but higher sales, greater production expenses, and higher net income than U.S. farms overall.

	Fruit Tree Nut Berry Farms	All Farms
Avg. acres	140	441
Avg. sales	\$296,901	\$190,245
Avg. government payments	\$11,106	\$13,906
Avg. expenses	\$245,267	\$159,821
Avg. net cash farm income	\$63,749	\$43,053

Production Expenses

The production costs of farms specializing in fruit, tree nut, and berry production totaled \$23.4 billion, up 17 percent from 2012. At \$5.8 billion, hired labor was the largest expense item, accounting for 25 percent of production expenses.

	(\$ bil)
Hired labor	5.8
Contract labor	3.2
Chemicals	2.2
Fertilizer	1.5
Supplies and repairs	1.3
Utilities	1.2
Interest	1.0
Other	7.2

Among Fruit, Tree Nut, and Berry Farms

 **81%** Have internet access

 **40%** Hire farm labor

 **94%** Are family farms

 **49%** Have net positive income