

# Tracking Fallow Land in California Using USDA's Cropland Data Layer

Audra Zakzeski

USDA NASS

Fairfax, VA

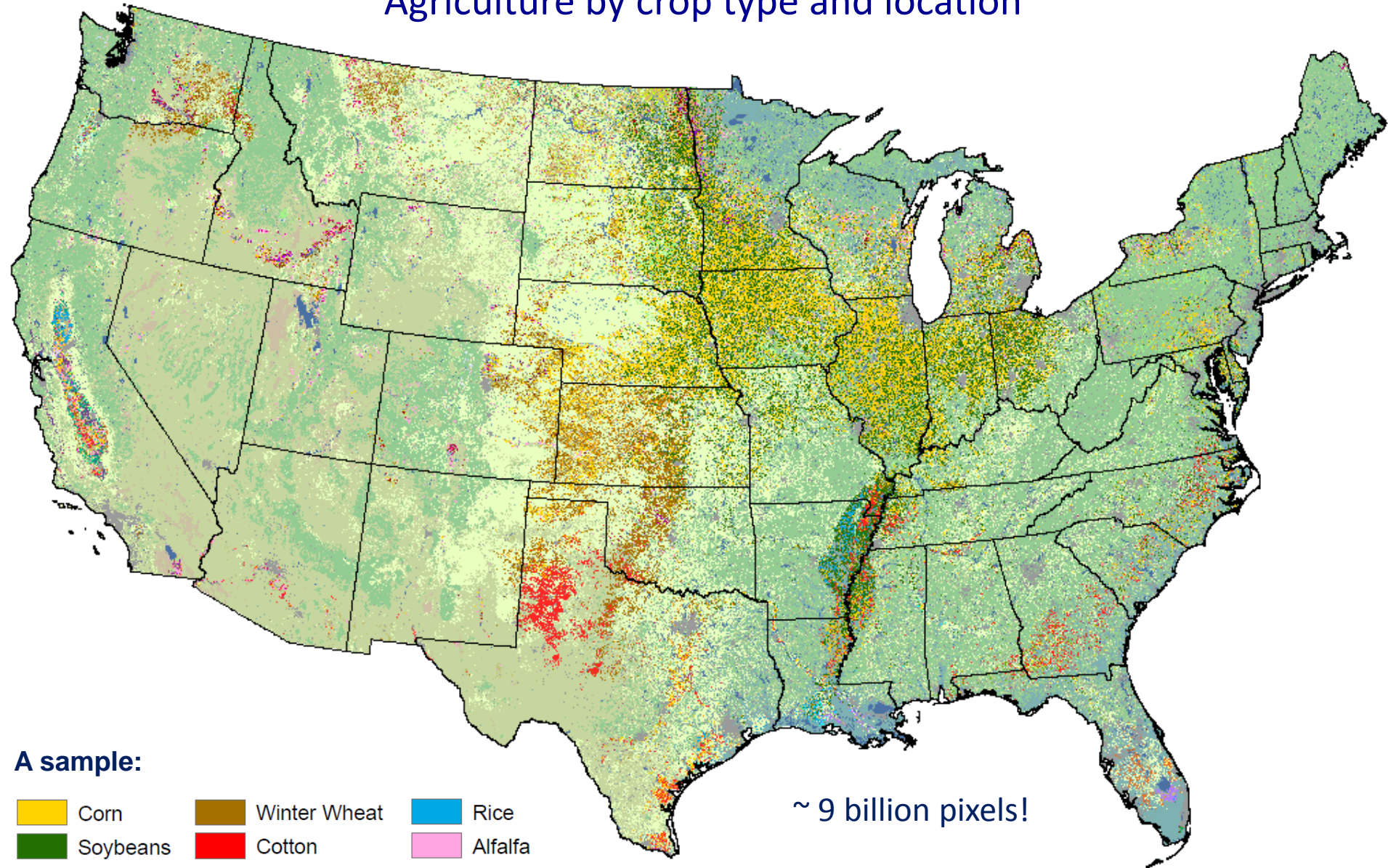


“ . . . providing timely, accurate, and useful statistics in service to U.S. agriculture.”



# Cropland Data Layer

Agriculture by crop type and location



# Crop Categories

1		Corn	41		Sugarbeets	73		Other Tree Fruits	227		Lettuce
2		Cotton	42		Dry Beans	74		Pecans	228		Cucumbers
3		Rice	43		Potatoes	75		Almonds	229		Pumpkins
4		Sorghum	44		Other Crops	76		Walnuts	230		Lettuce/Durum Wht
5		Soybeans	45		Sugarcane	77		Pears	231		Lettuce/Cantaloupe
6		Sunflower	46		Sweet Potatoes	80		Other Non-Tree Fruit	232		Lettuce/Upland Cotton
10		Peanuts	47		Misc. Vegs. & Fruits	92		Aquaculture	233		Lettuce/Barley
11		Tobacco	48		Watermelons	204		Pistachios	234		Durum Wht/Sorghum
12		Sweet Corn	49		Onions	205		Triticale	235		Barley/Sorghum
13		Pop. or Orn. Corn	50		Pickles	206		Carrots	236		WinWht/Sorghum
14		Mint	51		Chick Peas	207		Asparagus	237		Barley/Corn
21		Barley	52		Lentils	208		Garlic	238		WinWht/Cotton
22		Durum Wheat	53		Peas	209		Cantaloupes	239		Soybeans/Cotton
23		Spring Wheat	54		Tomatoes	210		Prunes	240		Soybeans/Oats
24		Winter Wheat	55		Caneberries	211		Olives	241		Corn/Soybeans
25		Other Small Grains	56		Hops	212		Oranges	242		Blueberries
26		DbL. Crop WinWht/Soy	57		Herbs	213		Honeydew Melons	243		Cabbage
27		Rye	58		Clover/Wildflowers	214		Broccoli	244		Cauliflower
28		Oats	59		Sod/Grass Seed	216		Peppers	245		Celery
29		Millet	60		Switchgrass	217		Pomegranates	246		Radishes
30		Speltz	61		Fallow/Idle Cropland	218		Nectarines	247		Turnips
31		Canola	62		Pasture/Grass	219		Greens	248		Eggplants
32		Flaxseed	66		Cherries	220		Plums	249		Gourds
33		Safflower	67		Peaches	221		Strawberries	250		Cranberries
34		Rape Seed	68		Apples	222		Squash	251		Corn - Non-Irrigated
35		Mustard	69		Grapes	223		Apricots	252		Soybean - Non-Irrigated
36		Alfalfa	70		Christmas Trees	224		Vetch	253		WinWheat - Non-Irrigated
37		Other Hay	71		Other Tree Nuts	225		WinWht/Corn			
38		Camelina	72		Citrus	226		Oats/Corn			

# Groundtruth – Farm Service Agency 578 Data

## Farmer Reported Data

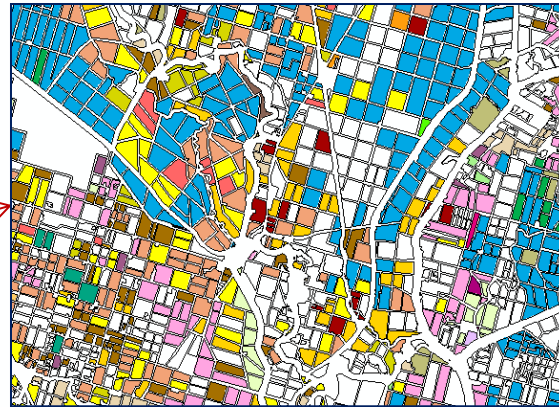
## FSA 578 & Common Land Unit

### *FSA 578 Data*

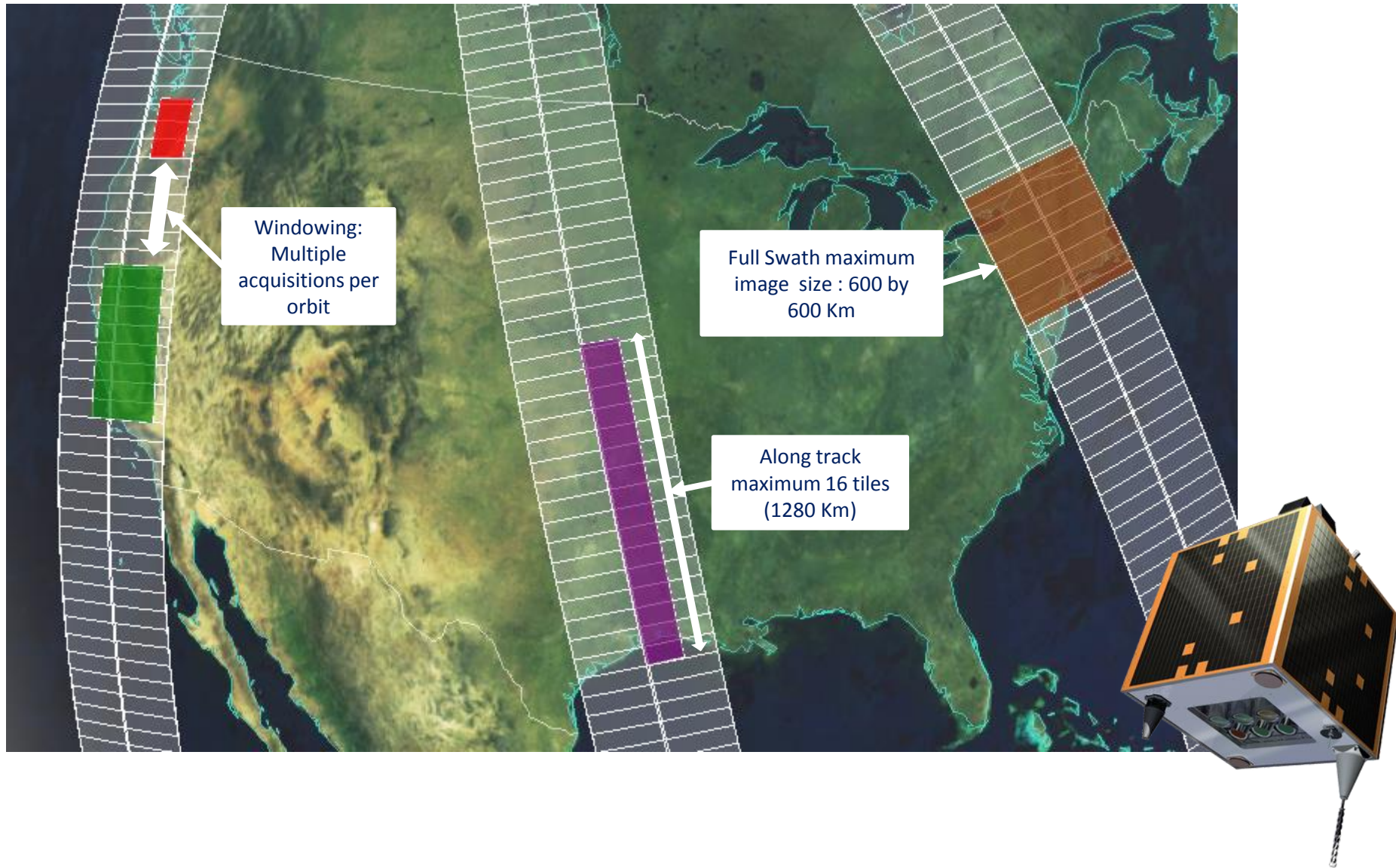
- Farmer reported data specifying crop type and location

### *Common Land Unit*

- Polygon field data



# 2013 Deimos-1/UK2 Satellite Tasking



# Landsat 8

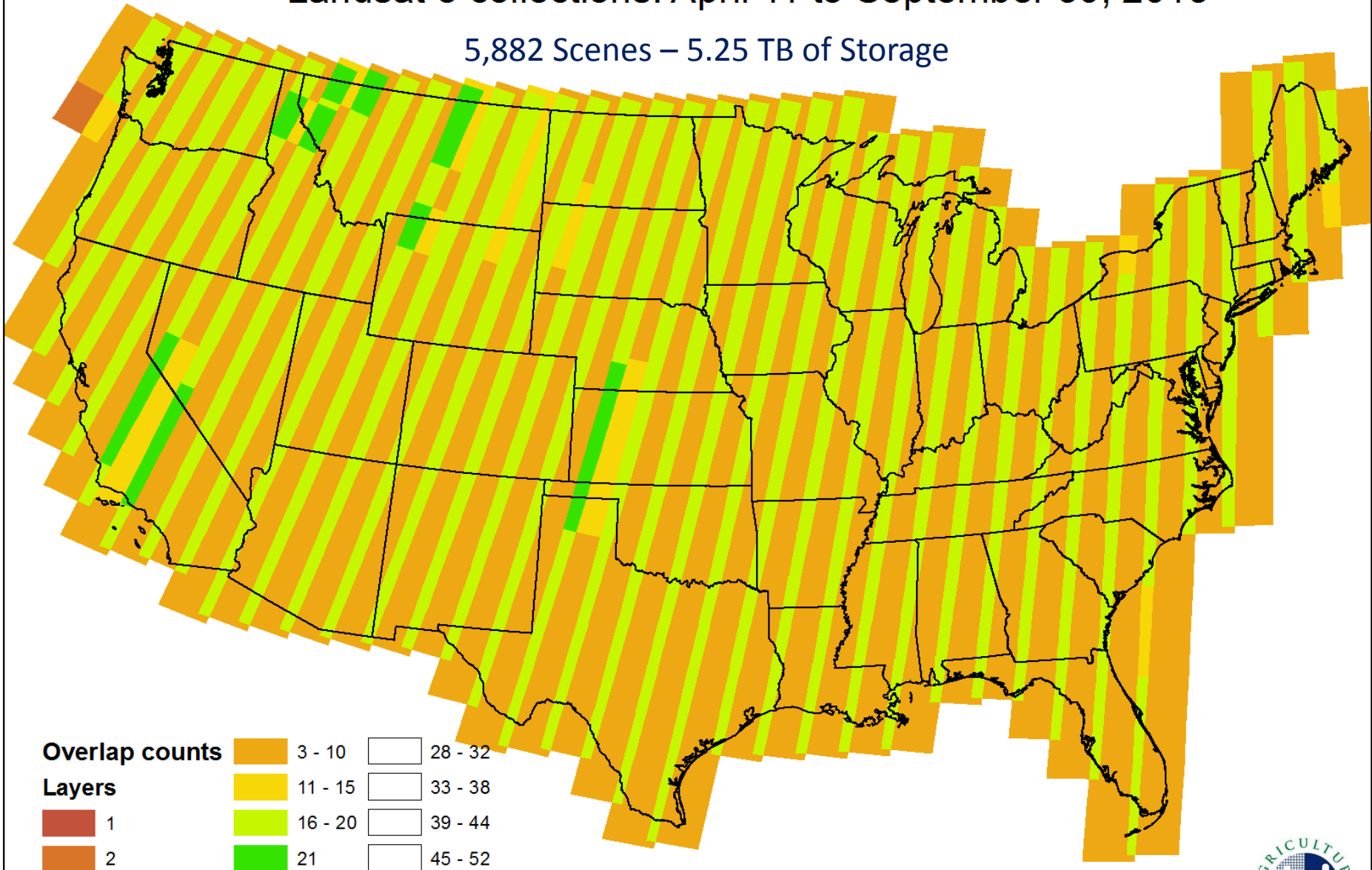


Launched February 11, 2013  
FREE to public  
30 meter pixels  
10 bands



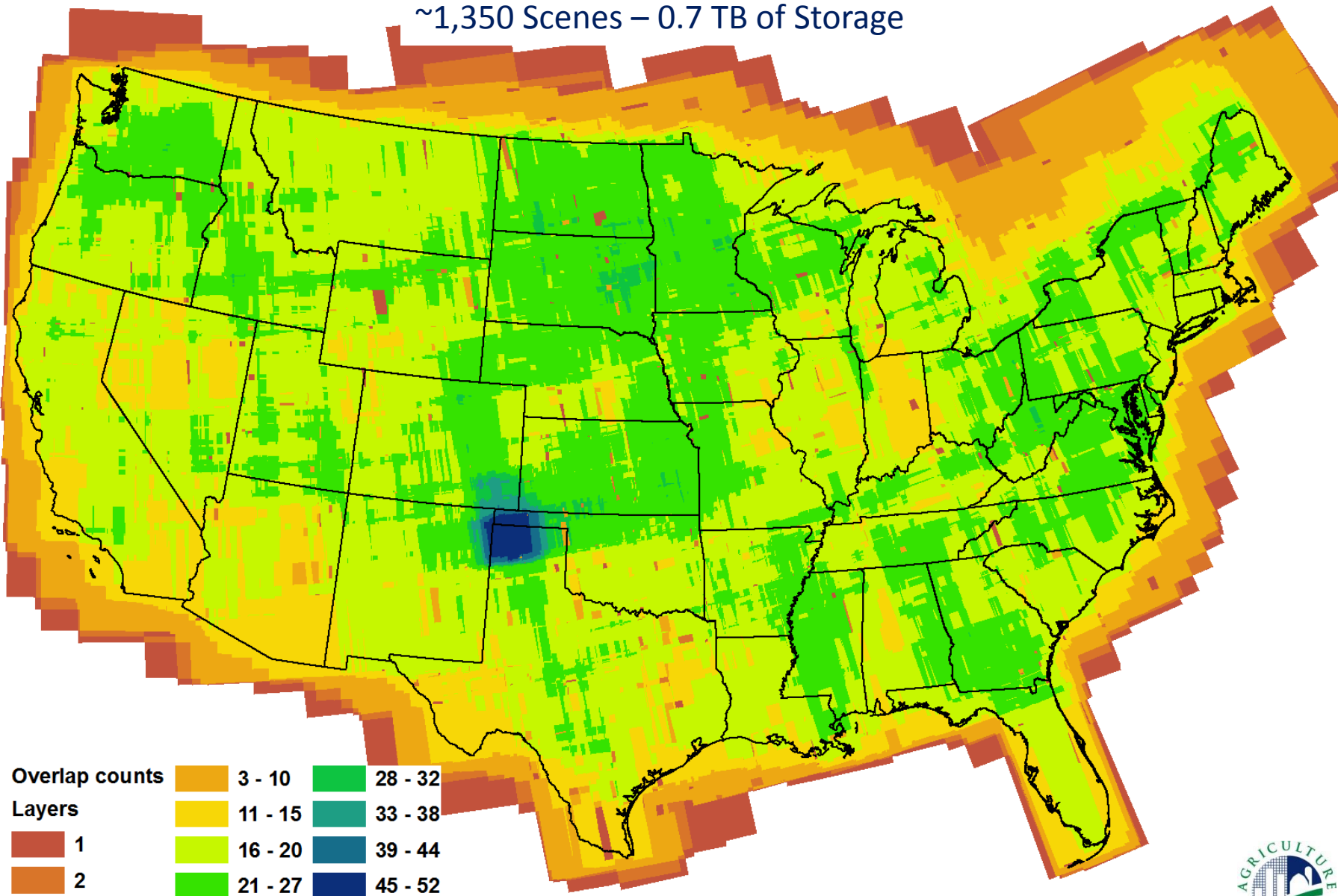
# Landsat 8 collections: April 11 to September 30, 2013

5,882 Scenes – 5.25 TB of Storage



# DMC collections: April 15 to September 30, 2013

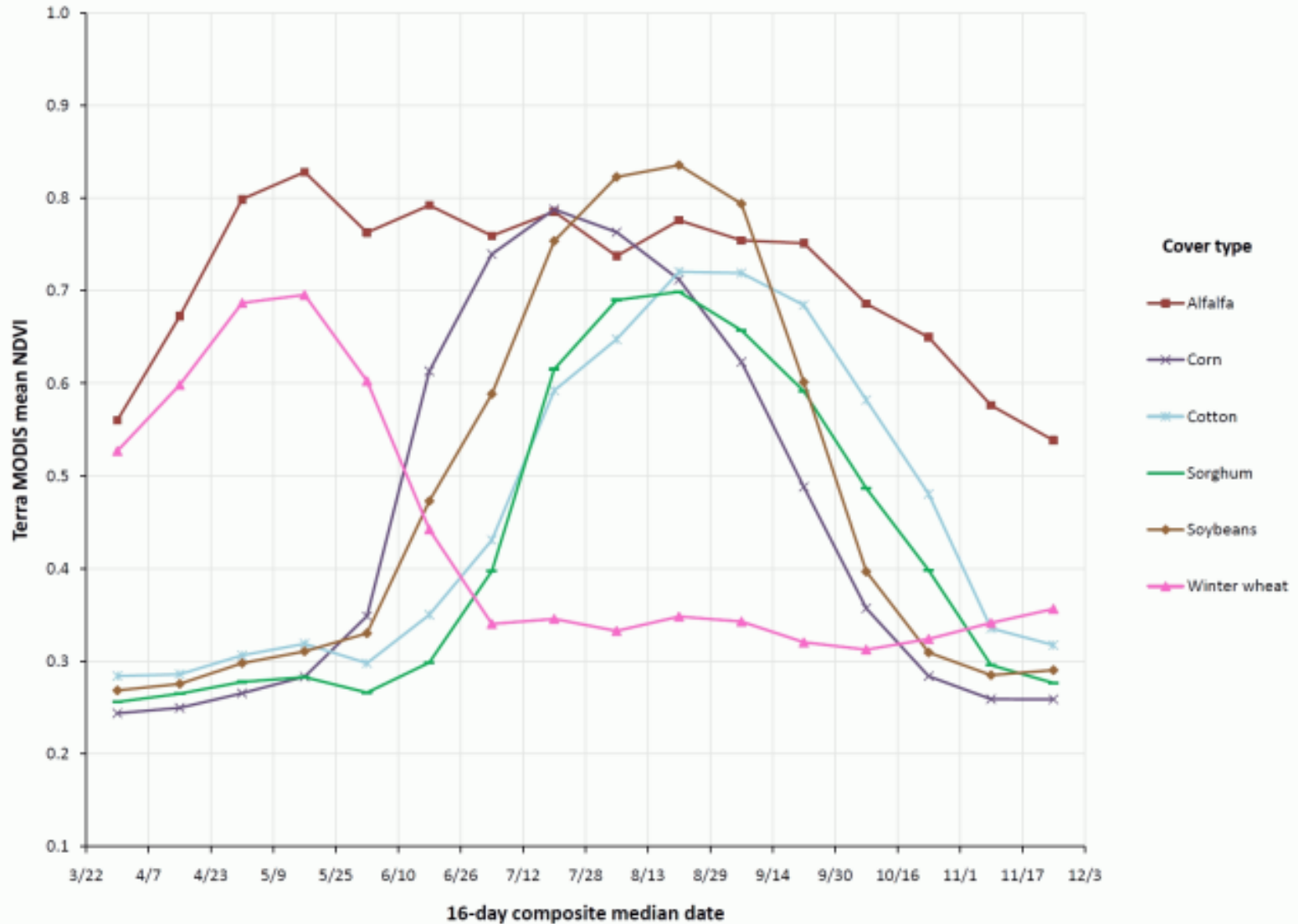
~1,350 Scenes – 0.7 TB of Storage





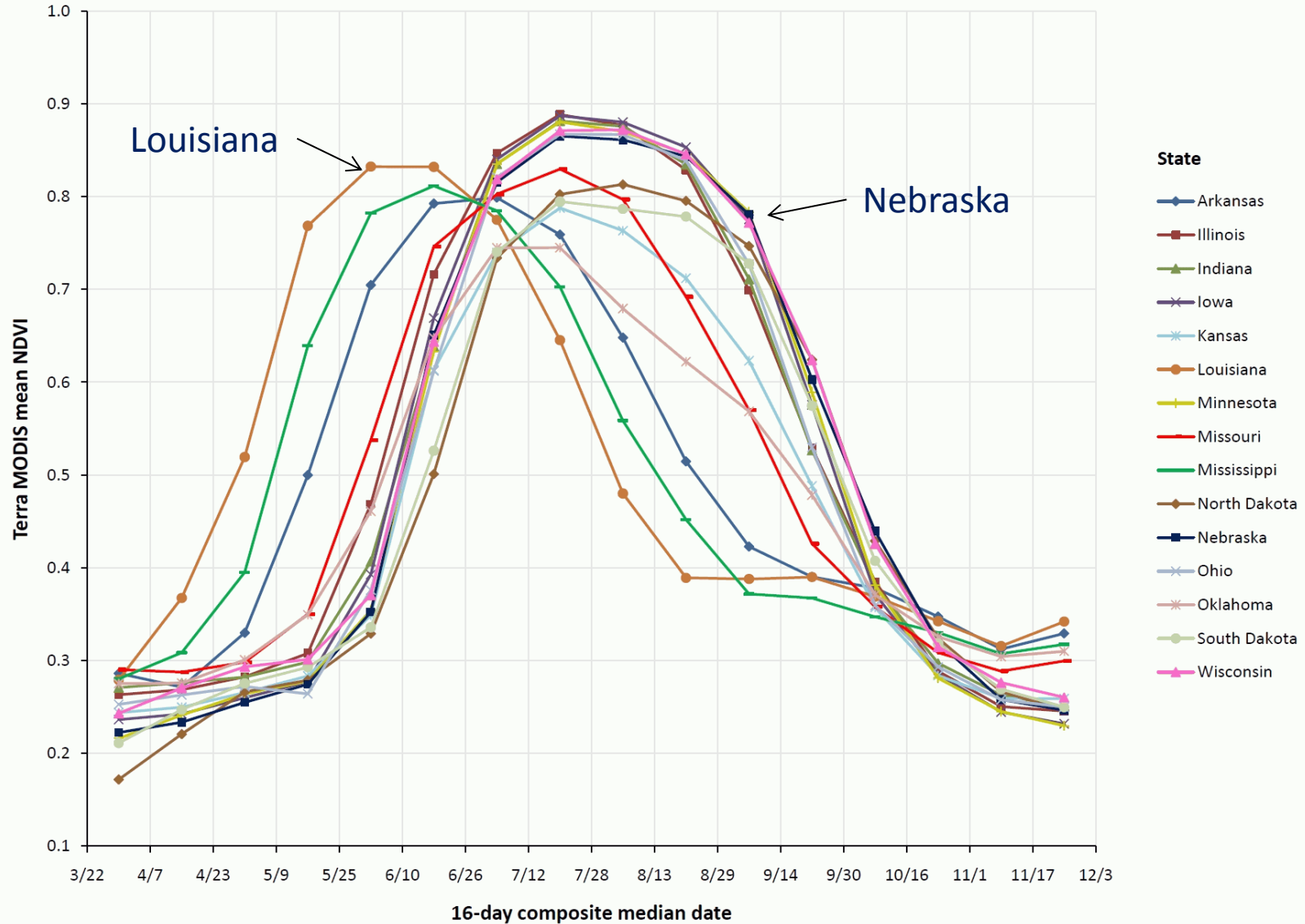
# Crop Phenologies

Kansas 5-year average 2006-2010

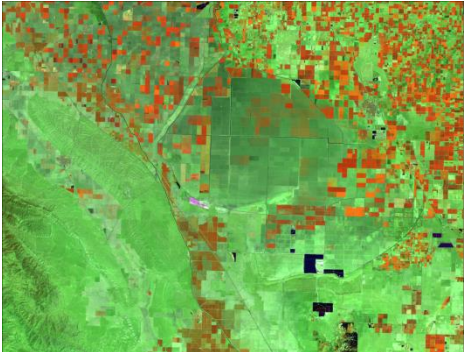


# State average corn phenologies

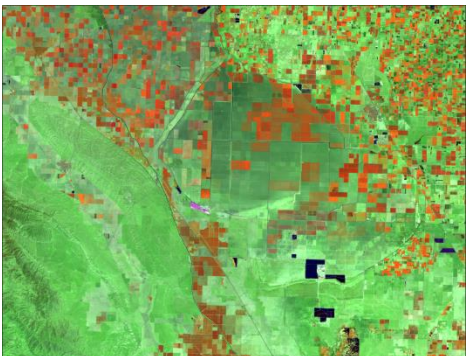
Corn 5-year average 2006-2010



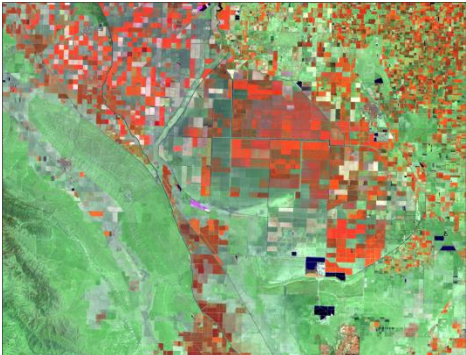
April



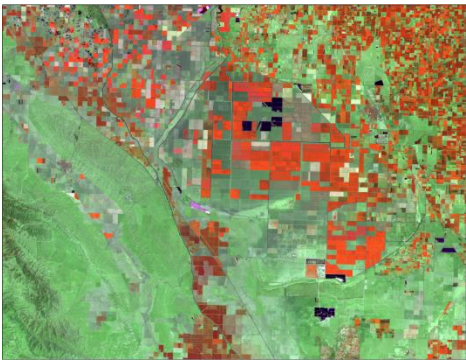
May



June



July

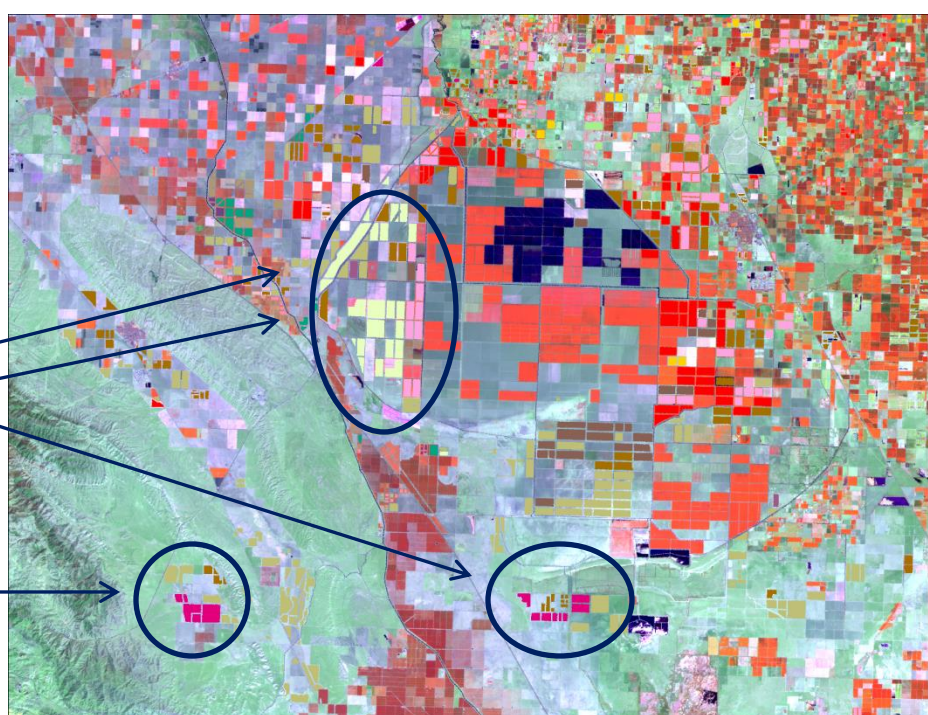


August  
with farm  
data

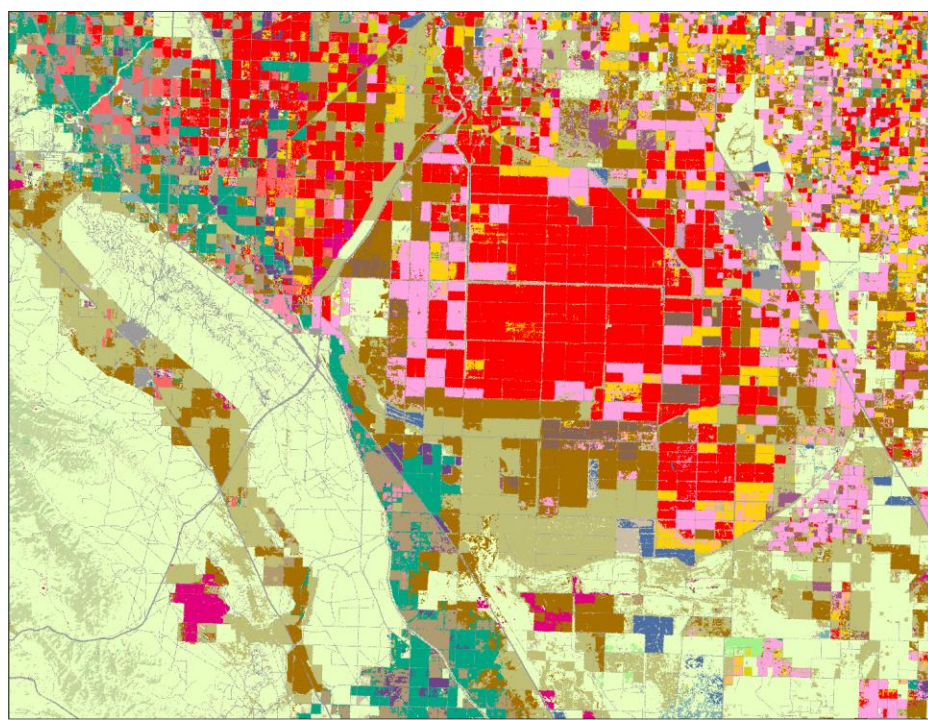
Land Cover Categories

Agriculture

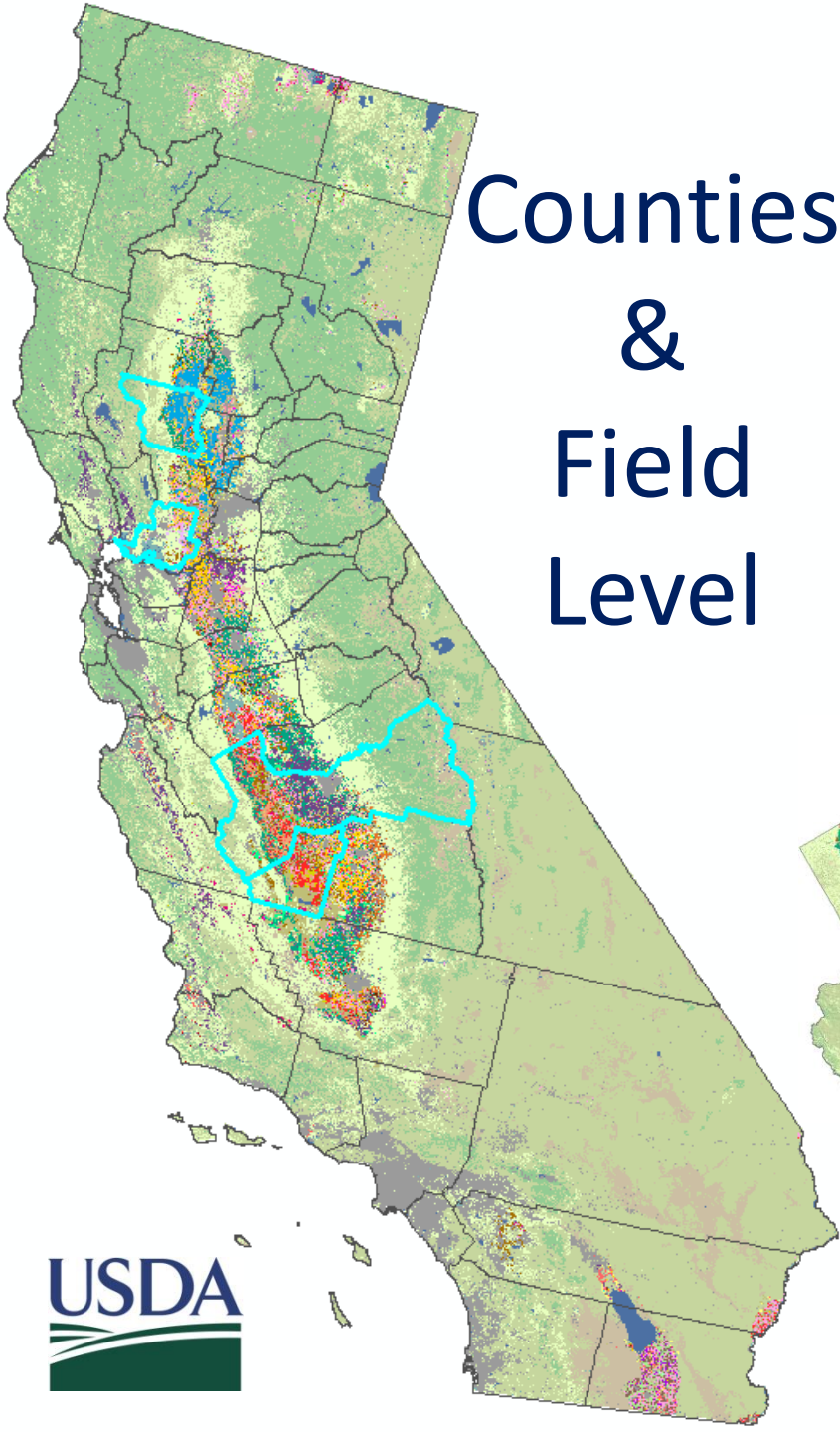
-  Pasture/Grass
-  Alfalfa
-  Fallow/Idle Cropland
-  Winter Wheat
-  Barley
-  Cotton
-  Almonds
-  Corn
-  Durum Wheat



Final  
CDL



# Counties & Field Level



Colusa

Solano

Fresno

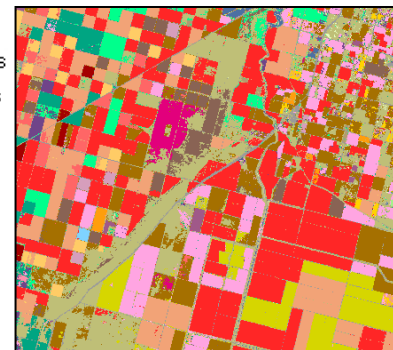
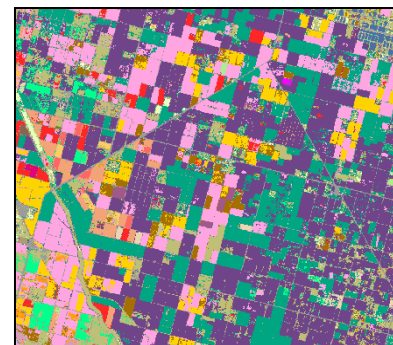
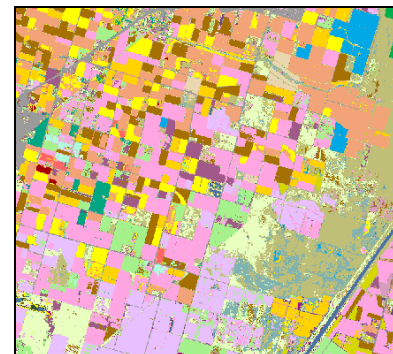
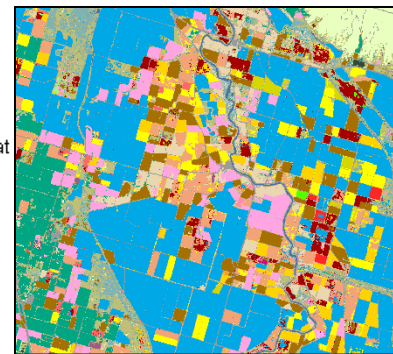
Kings

- Rice
- Sunflower
- Dry Beans
- Winter Wheat

- Clover
- Tomatoes
- Sunflower
- Alfalfa

- Grapes
- Almonds
- Alfalfa
- Corn

- Cotton
- Pistachios
- Tomatoes
- Safflower



# Fallow/Idle Land Mask

Category 61 in CDL

## In Season CDL Iterations

	June	August	September	October
Total Pixels	573,585	639,383	677,913	714,388
Total Acreage	127,562	142,195	150,764	158,875
Producer Accuracy	75.0%	79.4%	82.7%	78.2%
User Accuracy	66.6%	69.9%	71.1%	67.6%

**Pixels** – 30 meter pixels = 0.223 acres

**Producer Accuracy/Omission** – relates to the probability that a ground truth pixel will be correctly mapped; occurs when a pixel is excluded from the correct category.

**User Accuracy/Commission** – indicates the probability a pixel from the classification matches the ground truth data; occurs when a pixel is included in an incorrect category

**Definition of “Fallow/Idle” up to farmers**



# Fallow/Idle by County

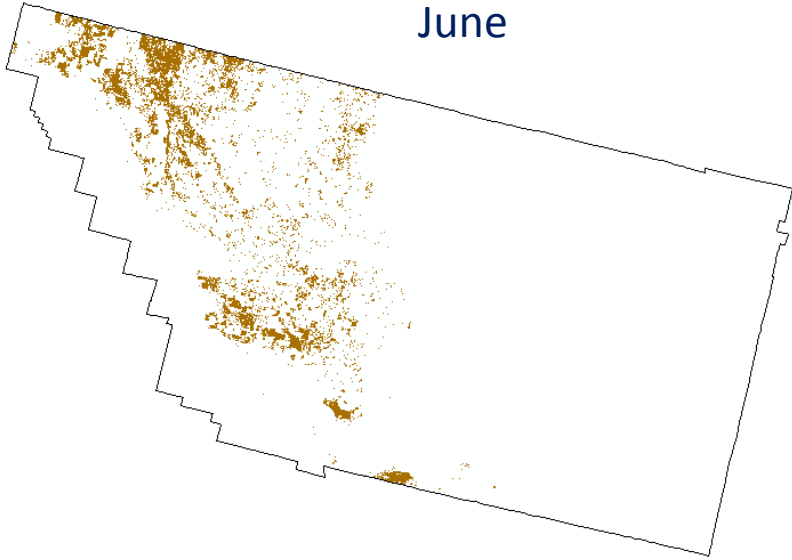
arranged by descending October Fallow/Idle acreage

	Acres by CDL Iteration			
	June	August	September	October
<b>Kern</b>	246,472	263,599	282,865	310,068
<b>Kings</b>	118,197	154,153	214,607	223,455
<b>Fresno</b>	163,500	152,763	157,149	161,372
<b>Tulare</b>	74,511	92,147	100,263	110,517
<b>Yolo</b>	70,598	75,134	77,686	84,979
<b>Sutter</b>	49,477	63,264	62,025	61,019
<b>Imperial</b>	39,163	45,520	52,748	60,706
<b>Butte</b>	54,520	58,213	55,053	53,638
<b>Colusa</b>	31,402	40,790	42,760	45,132
<b>Glenn</b>	28,729	36,061	36,514	39,323

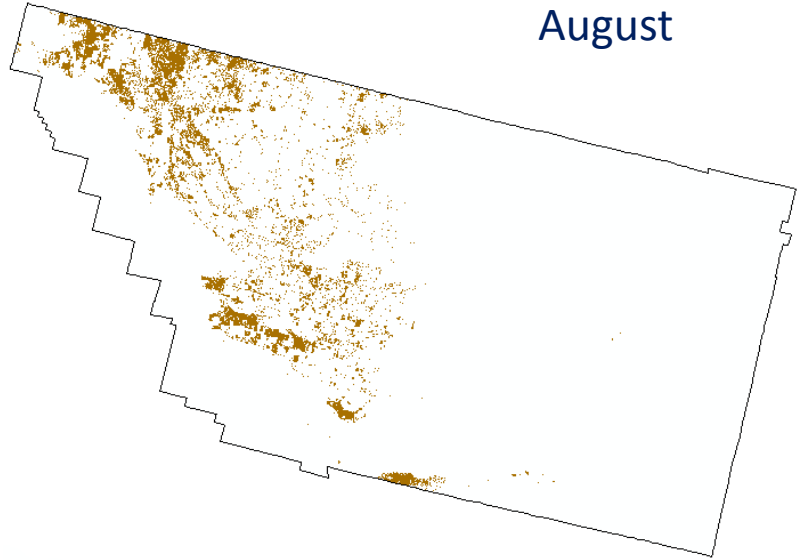


# Kern Close-Up

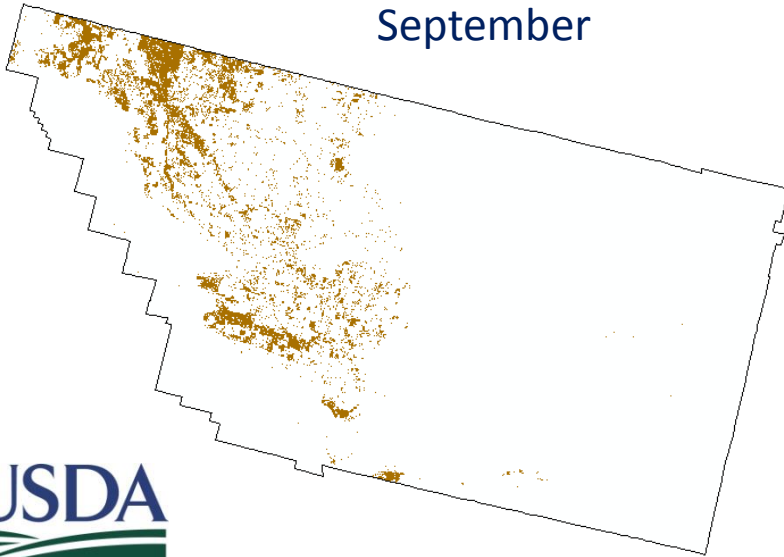
June



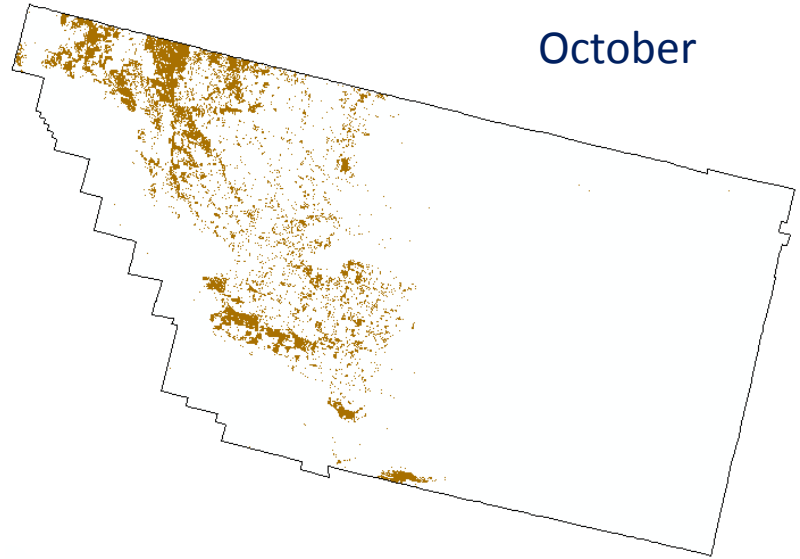
August



September

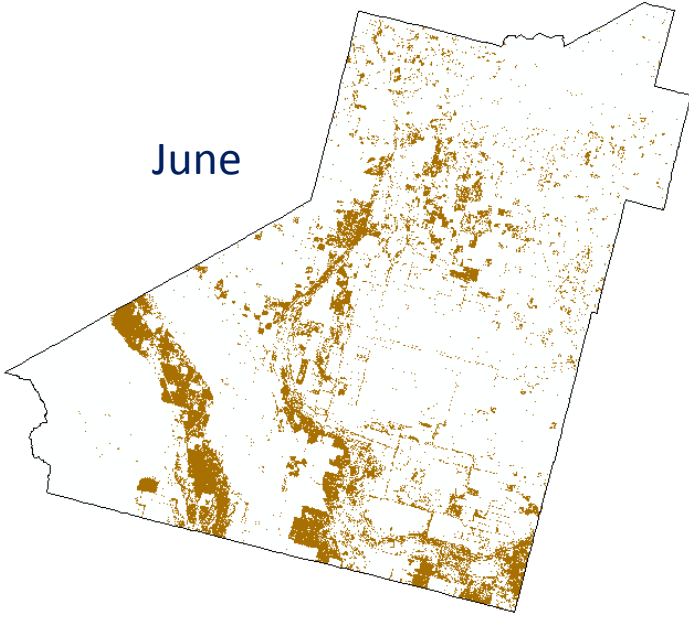


October

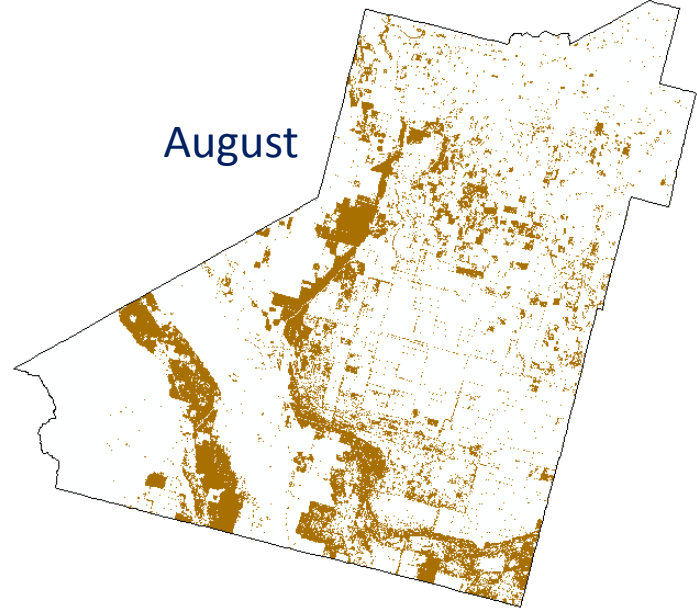


# Kings Close-Up

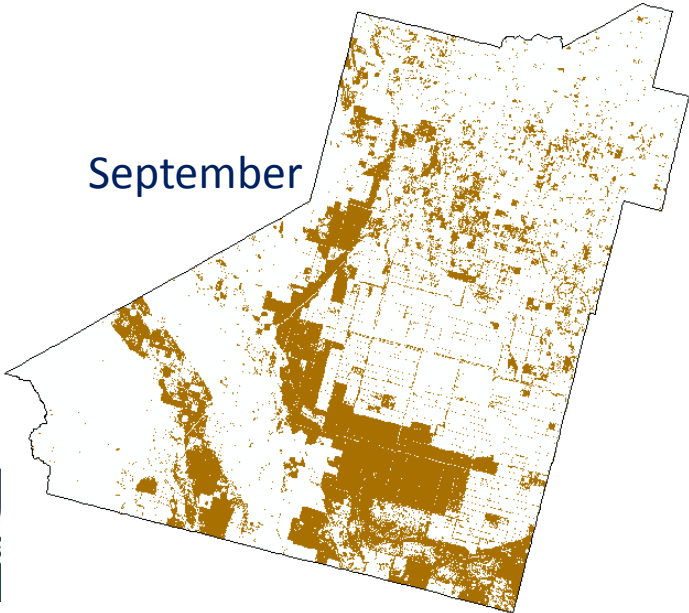
June



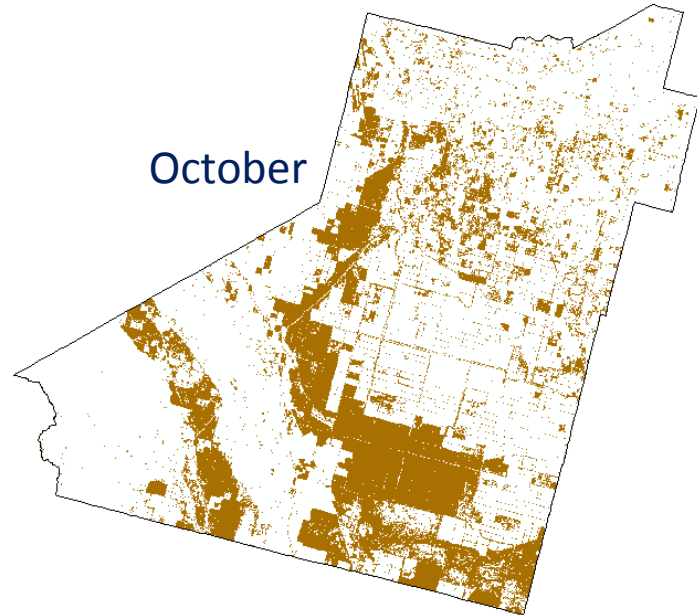
August



September



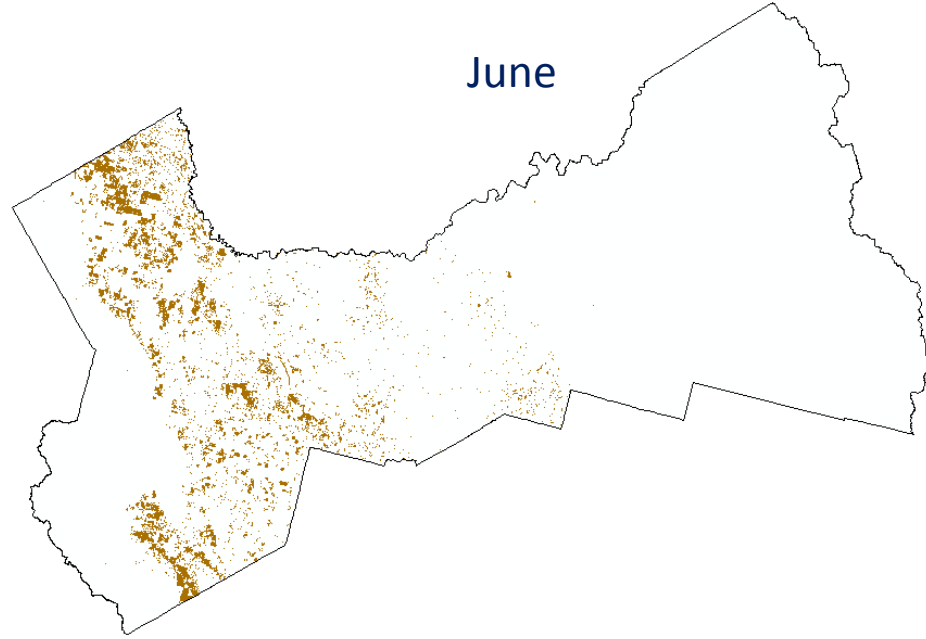
October



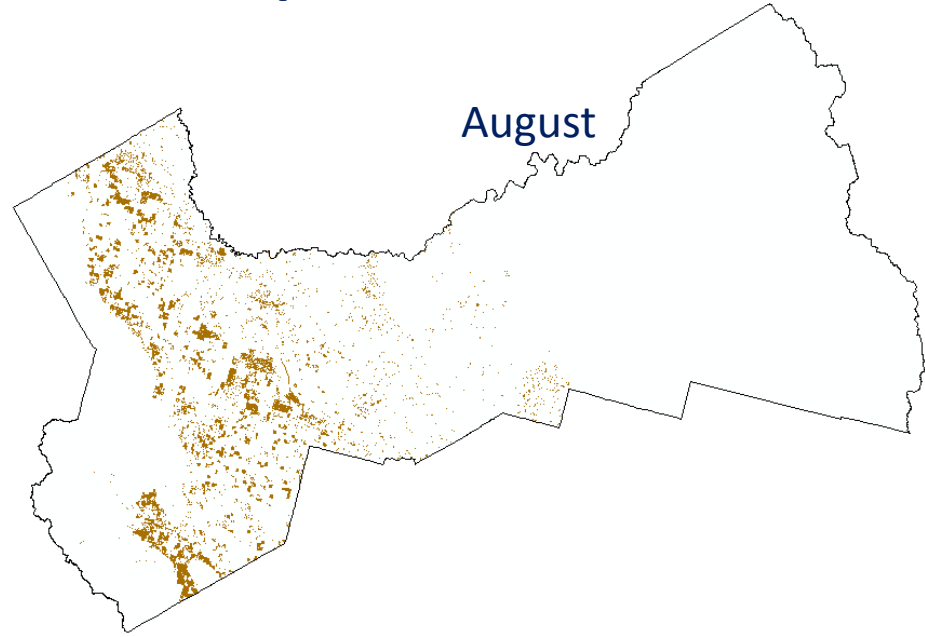


# Fresno Close-Up

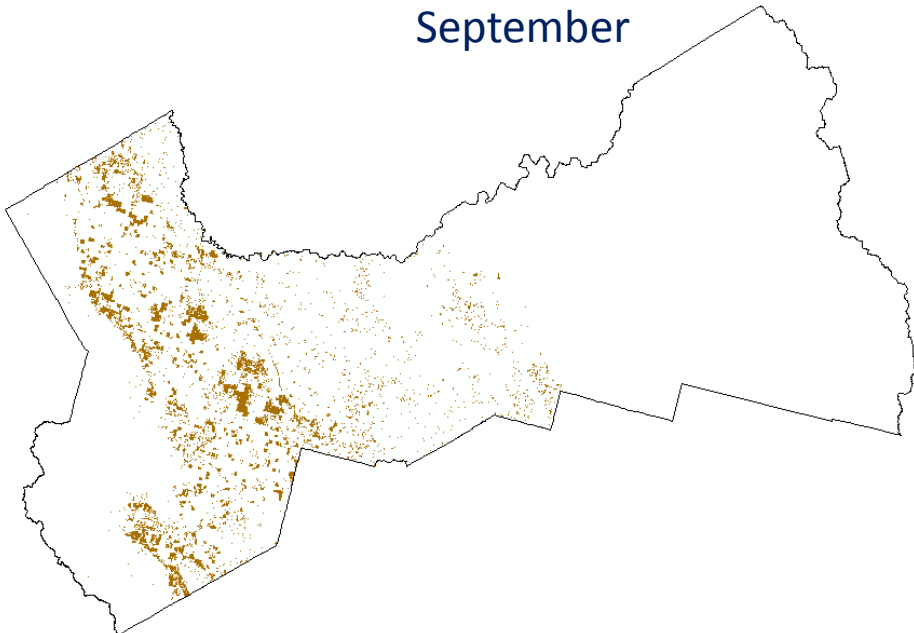
June



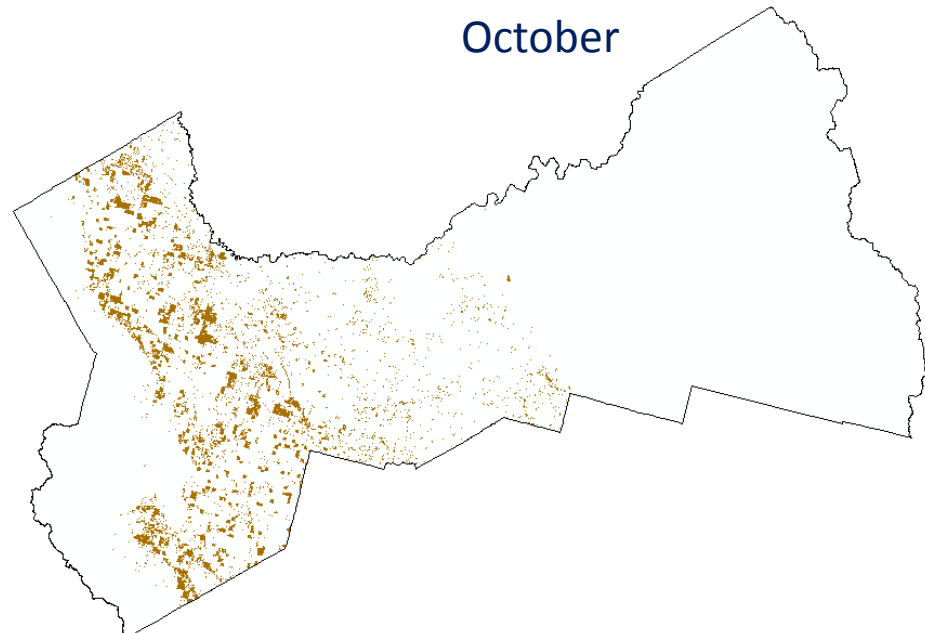
August



September

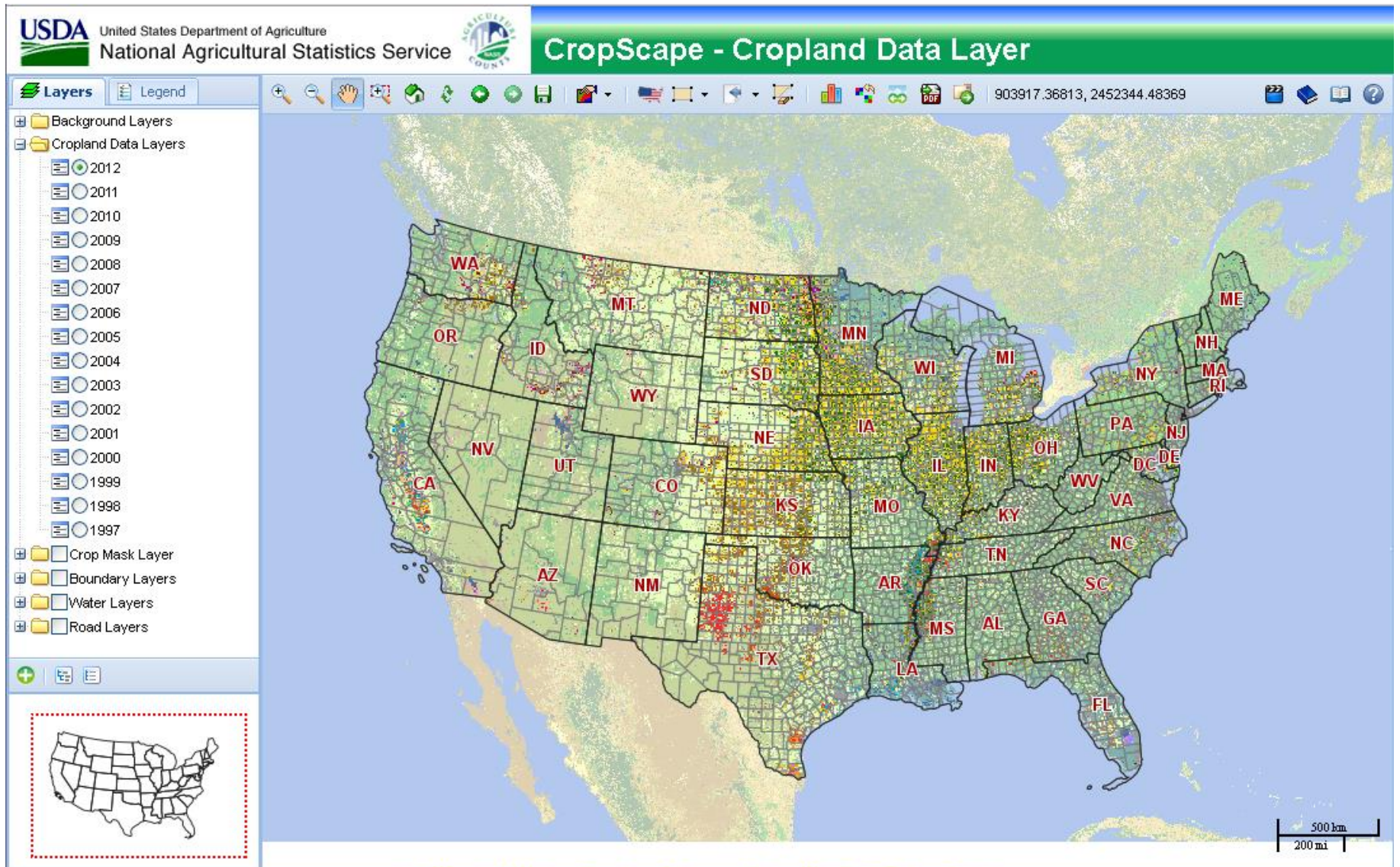


October



# CropScape

<http://nassgeodata.gmu.edu/CropScape>



# Thank You!

## Questions?

Audra Zakzeski  
USDA NASS  
3251 Old Lee Hwy #305  
Fairfax, VA 22030  
[Audra\\_zakzeski@nass.usda.gov](mailto:Audra_zakzeski@nass.usda.gov)  
(703) 877 – 8000 x 121

