



**United States Department of Agriculture
National Agricultural Statistics Service**



Iowa Corn Visit

Crop Data

**Lance Honig
Crops Branch Chief**

July 2014



U.S. Principal Crops Planted



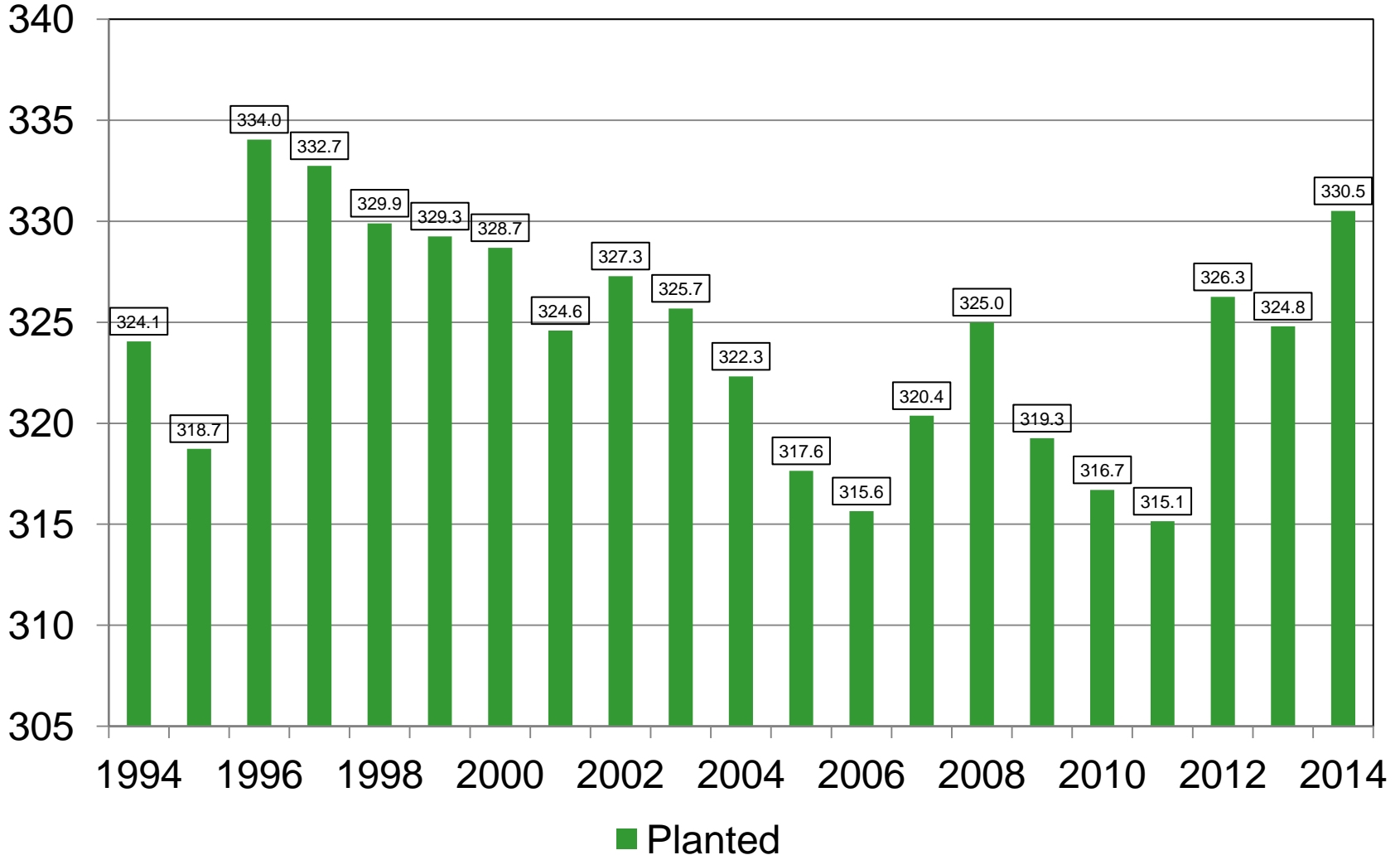
Year	Principal Crops	Change from Previous Year
<i>---Million acres---</i>		
2005	317.6	- 4.7
2006	315.6	- 2.0
2007	320.4	+ 4.7
2008	325.0	+ 4.6
2009	319.3	- 5.7
2010	316.7	- 2.6
2011	315.1	- 1.6
2012	326.3	+ 11.2
2013	324.8	- 1.5
2014	330.5	+ 5.7



Principal Crop Acres

United States

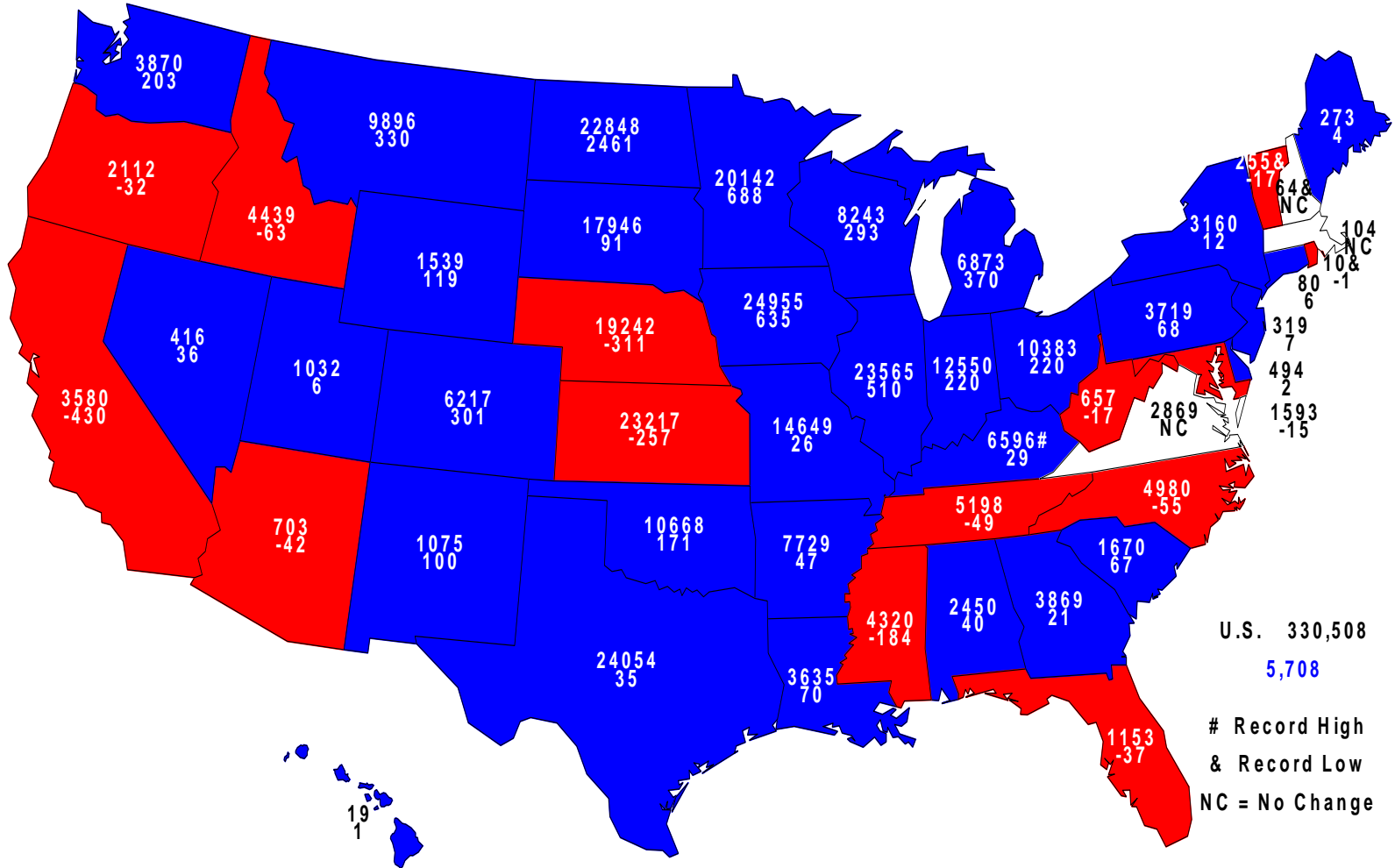
Million Acres





2014 Principal Crops Planted

Acres (000) and Change From Previous Year

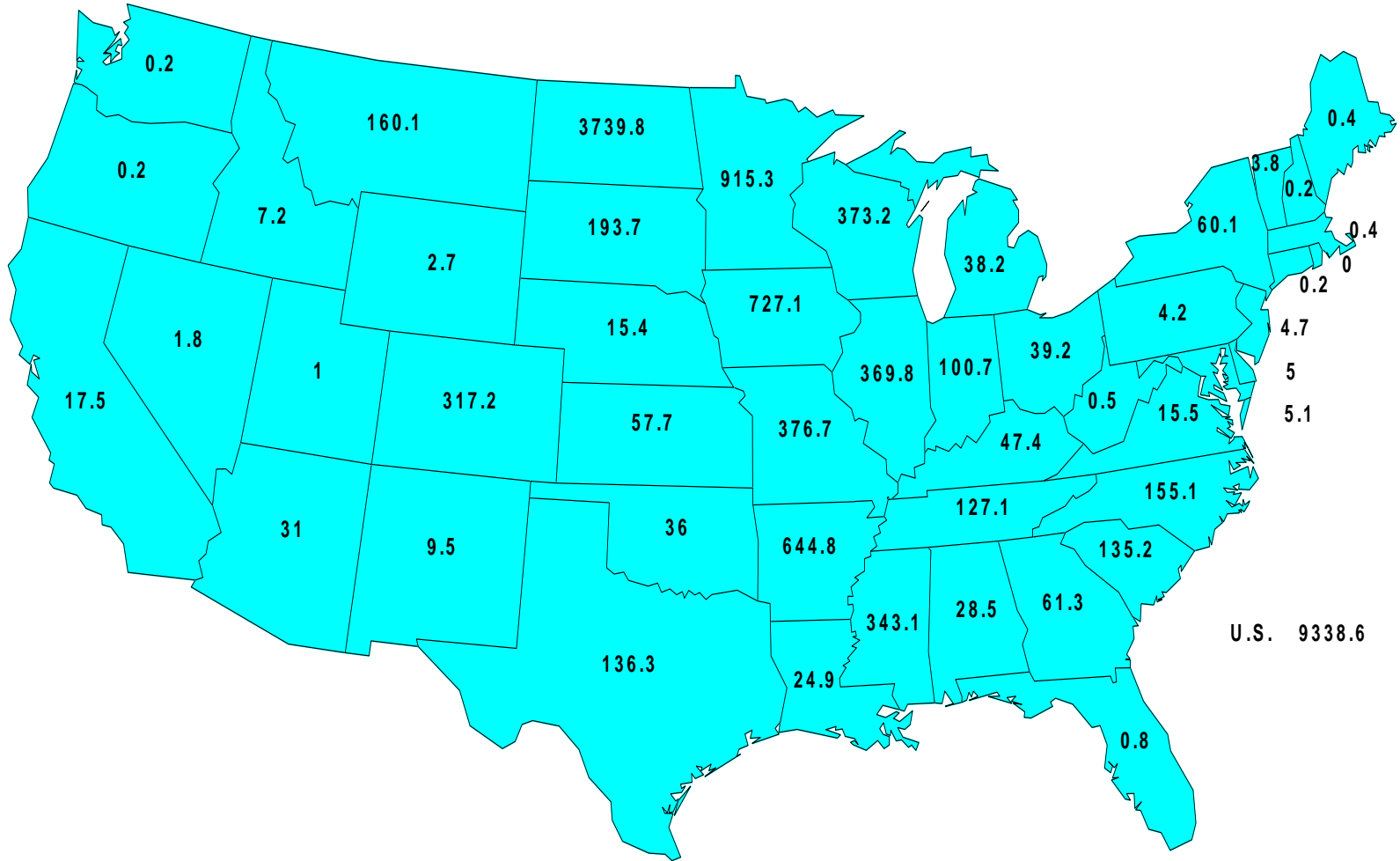


U.S. 330,508
5,708

Record High
& Record Low
NC = No Change



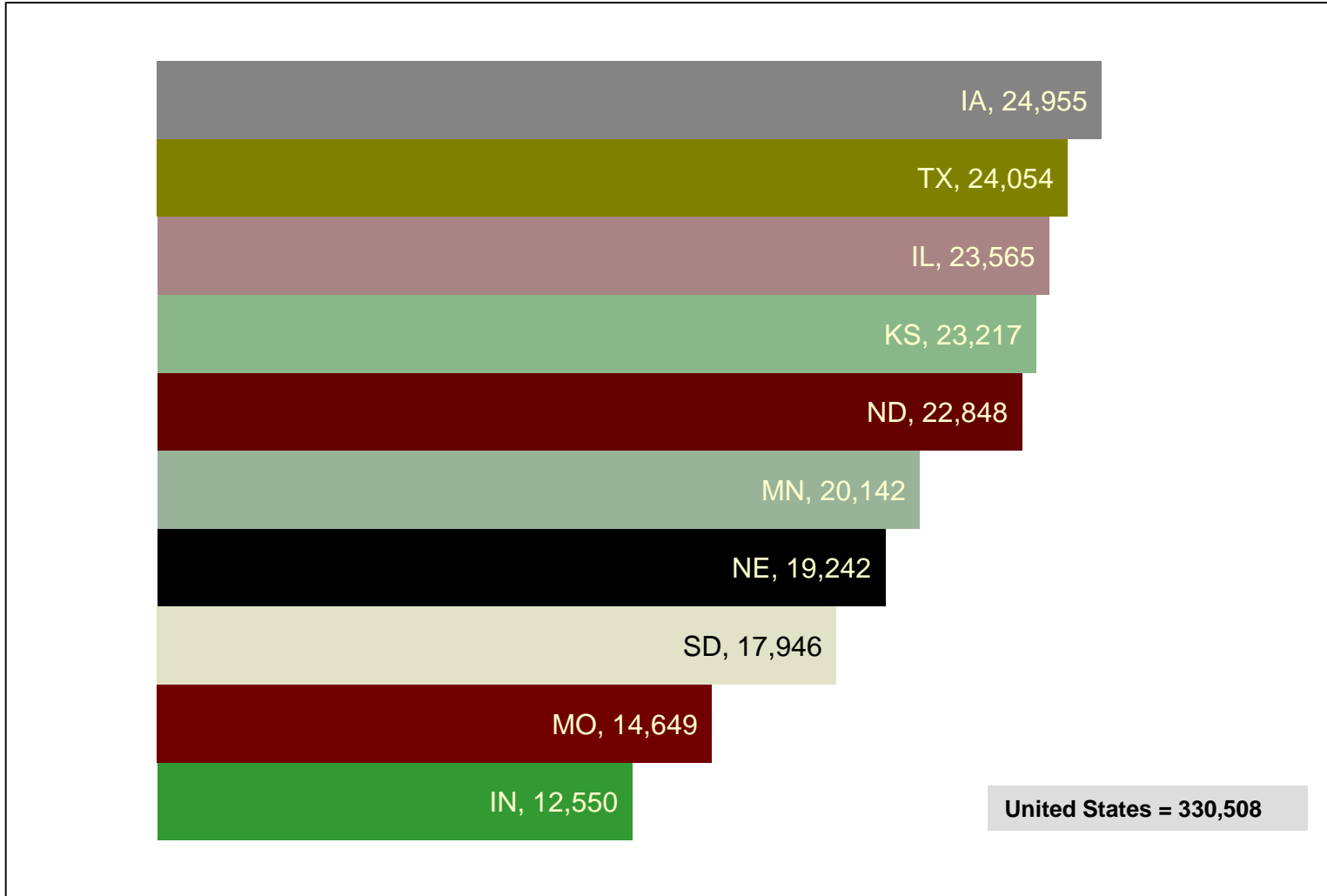
FSA Prevent Plant Acres (000) - 2013





2014 Principal Crops Planted

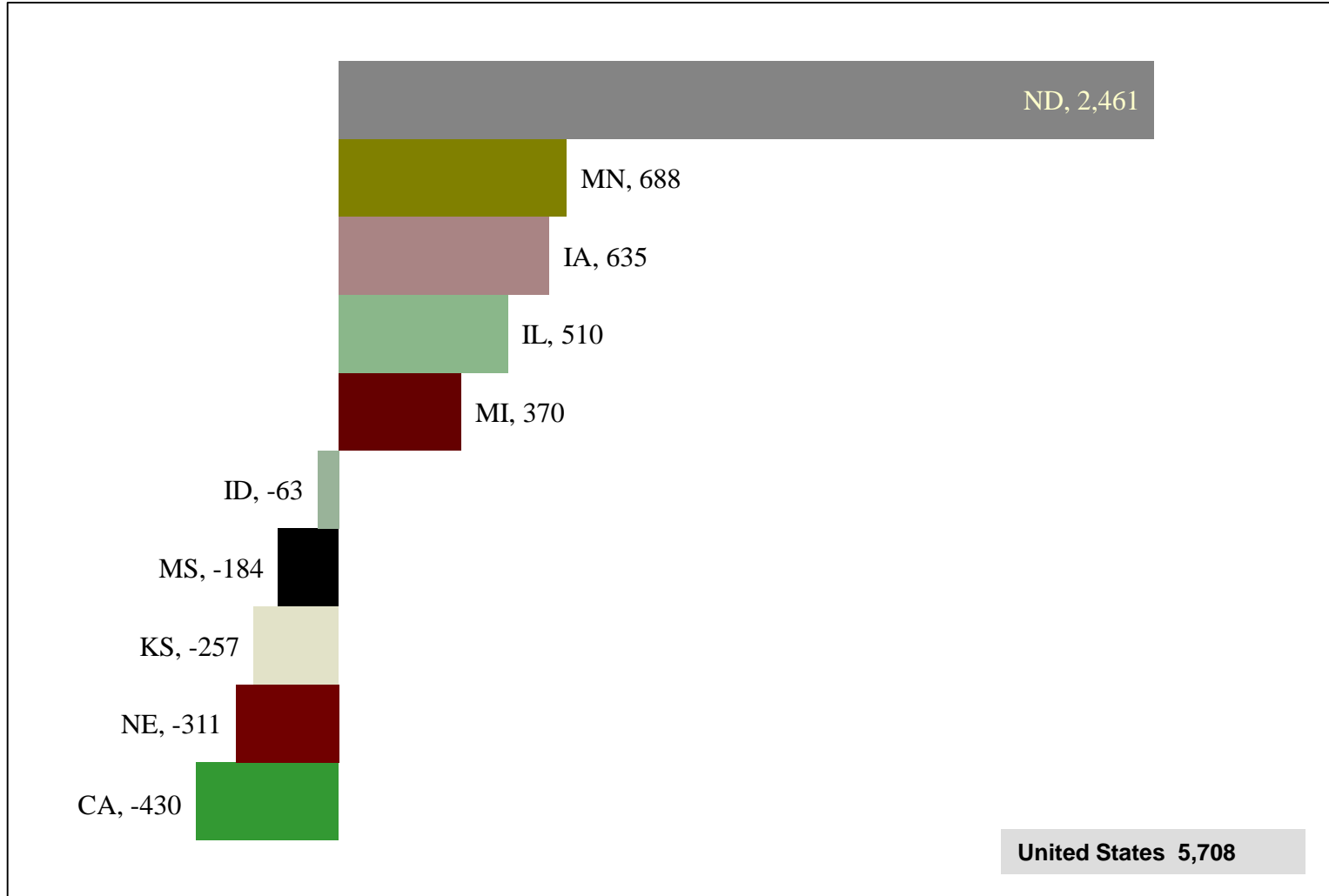
Top Ten States (1,000 Acres)





Principal Crops Planted

2014 Change from 2013 (1,000 Acres)

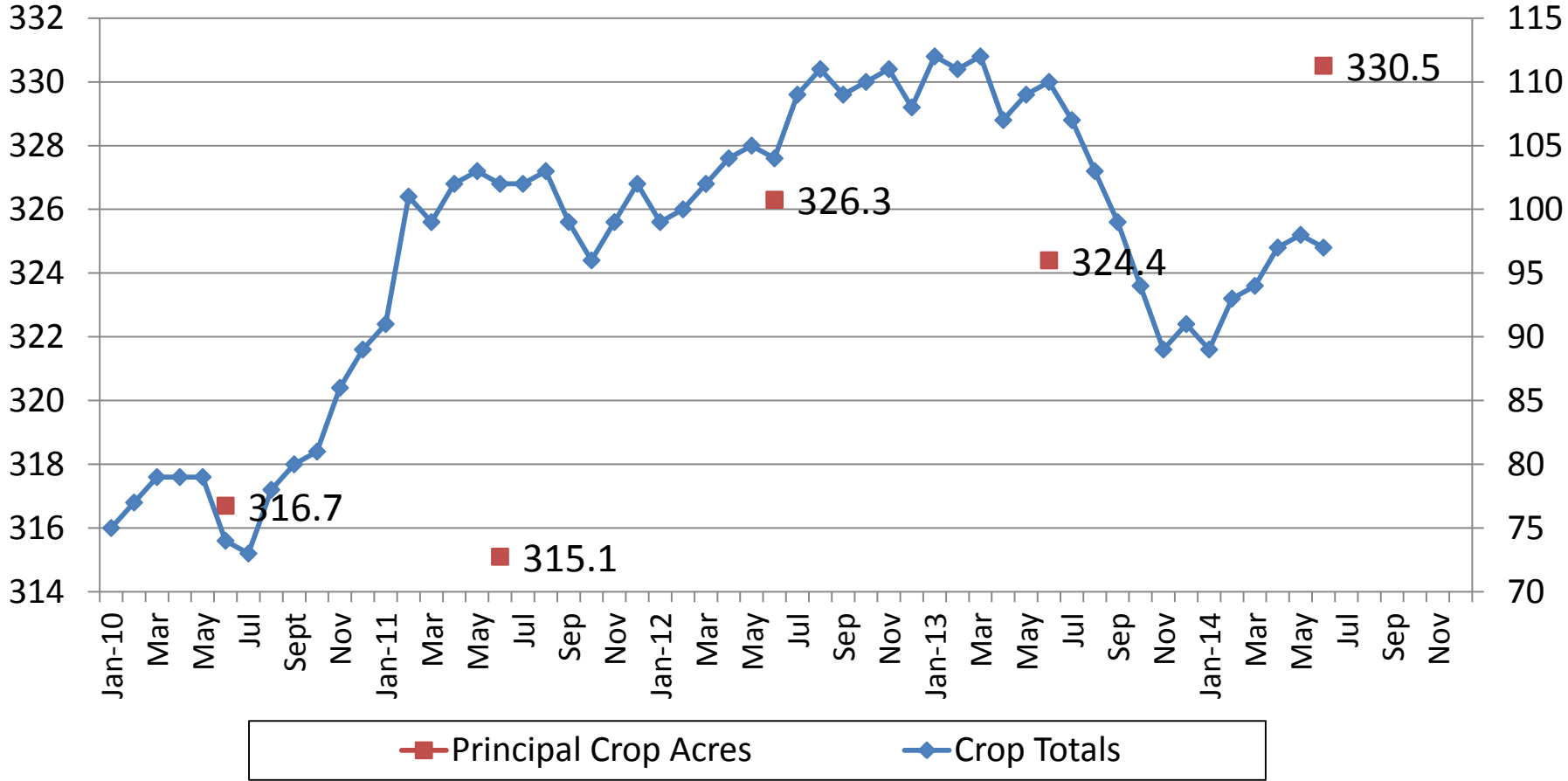




Crop Total Price Index and Principal Crop Acres (2010-2014)

Percent
(2011=100)

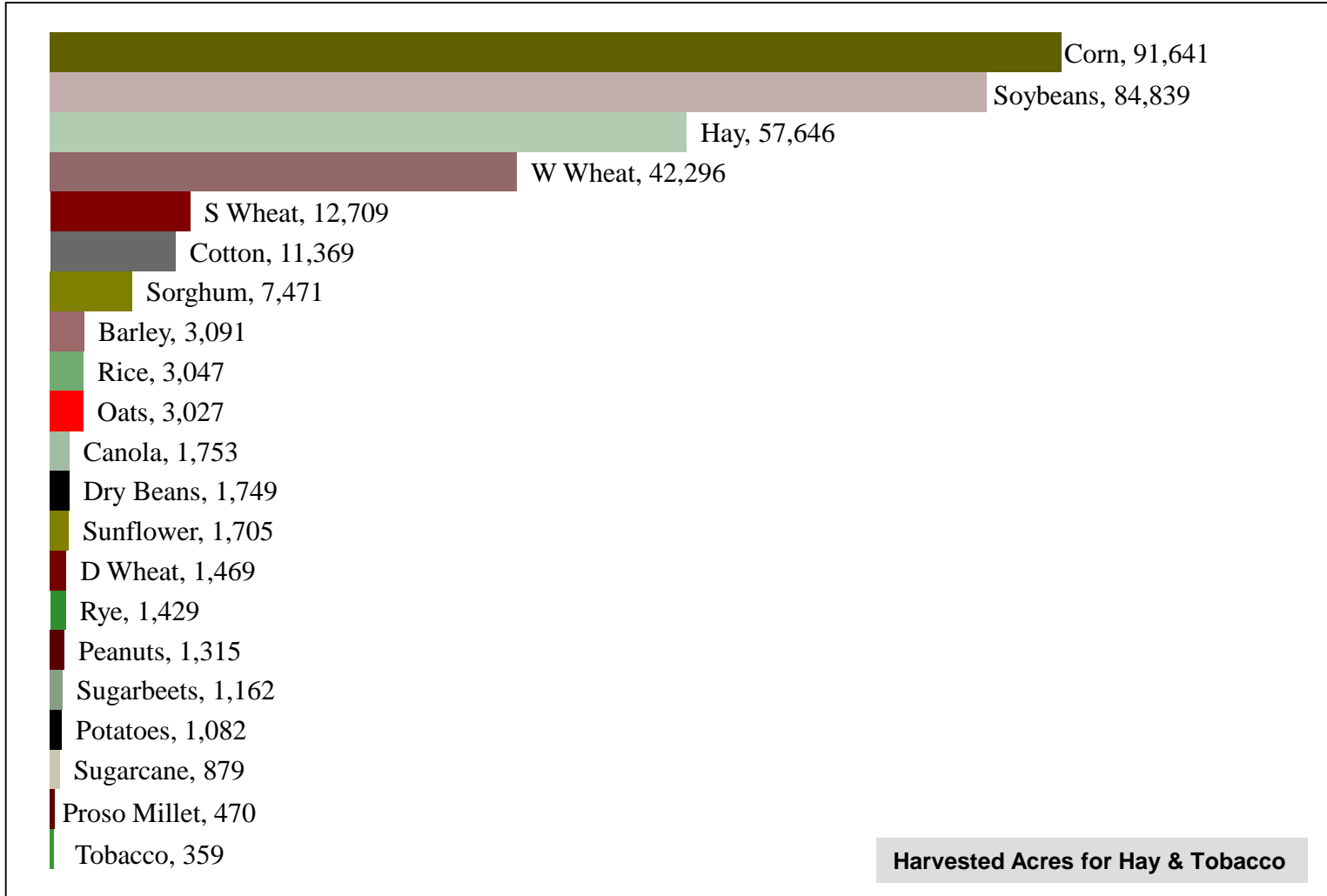
Million Acres





Planted Acres (000)

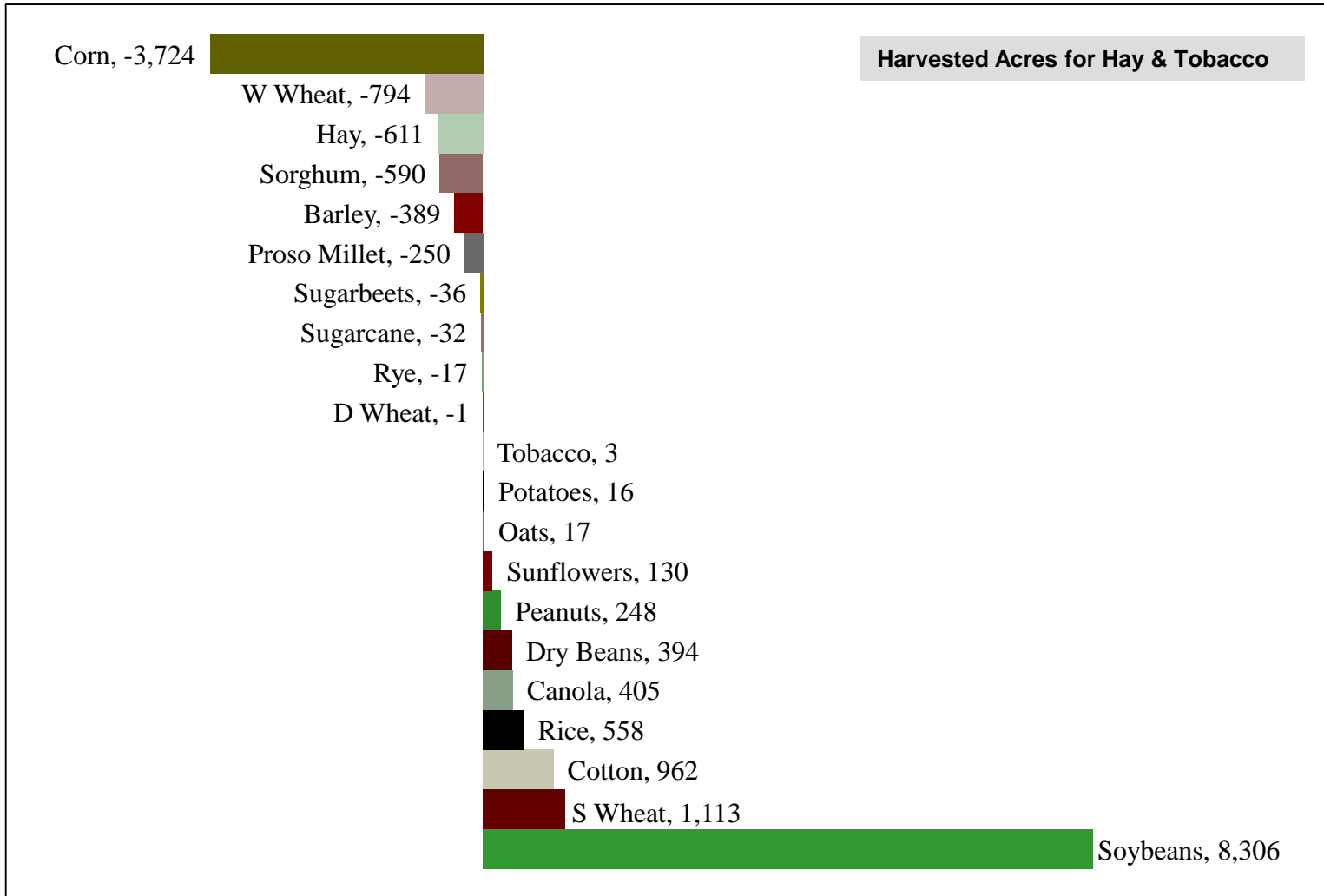
June 2014





Change in Planted Acres (000)

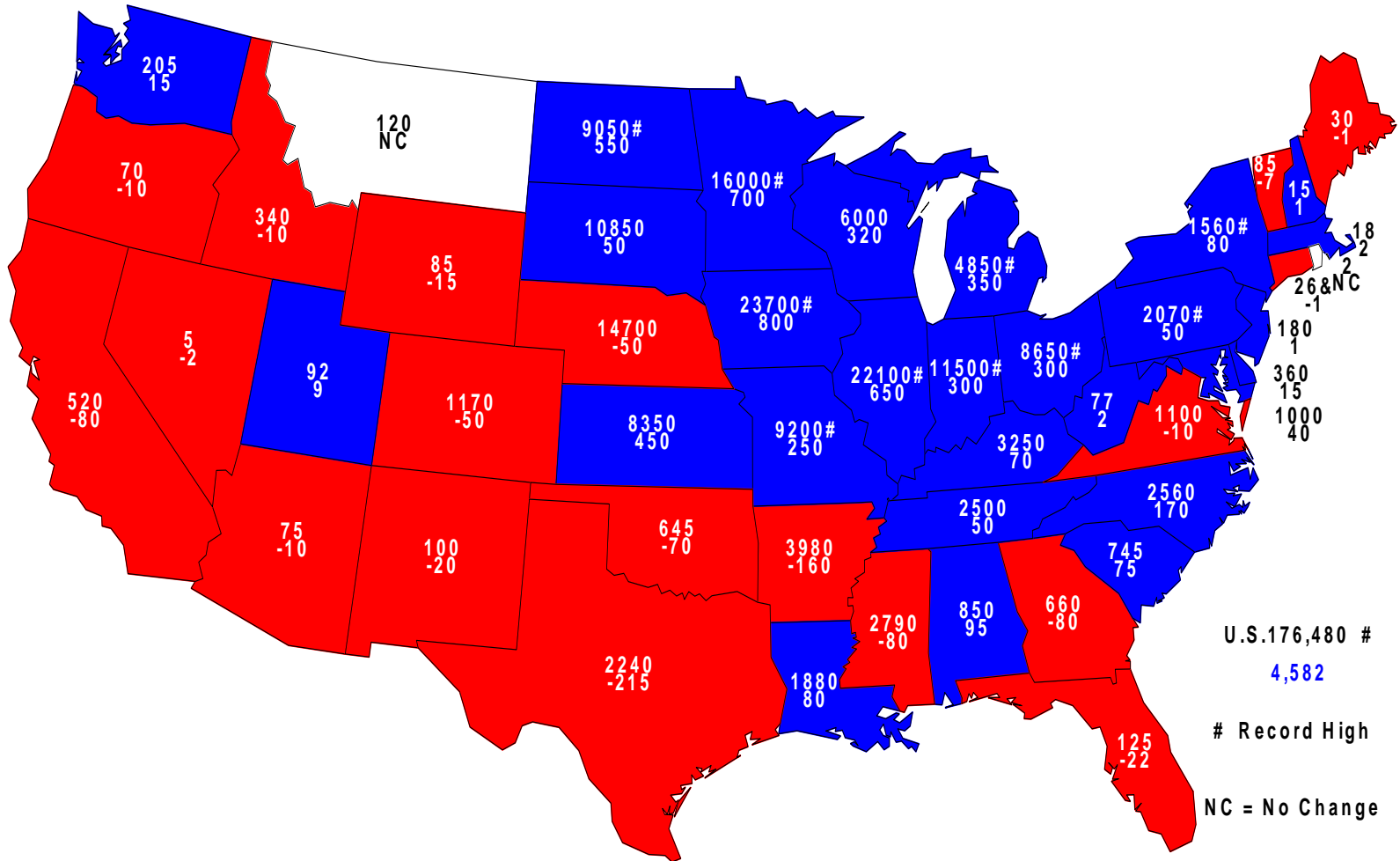
2014 Compared With 2013





2014 Combined Corn & Soybeans Planted

Acres (000) and Change From Previous Year



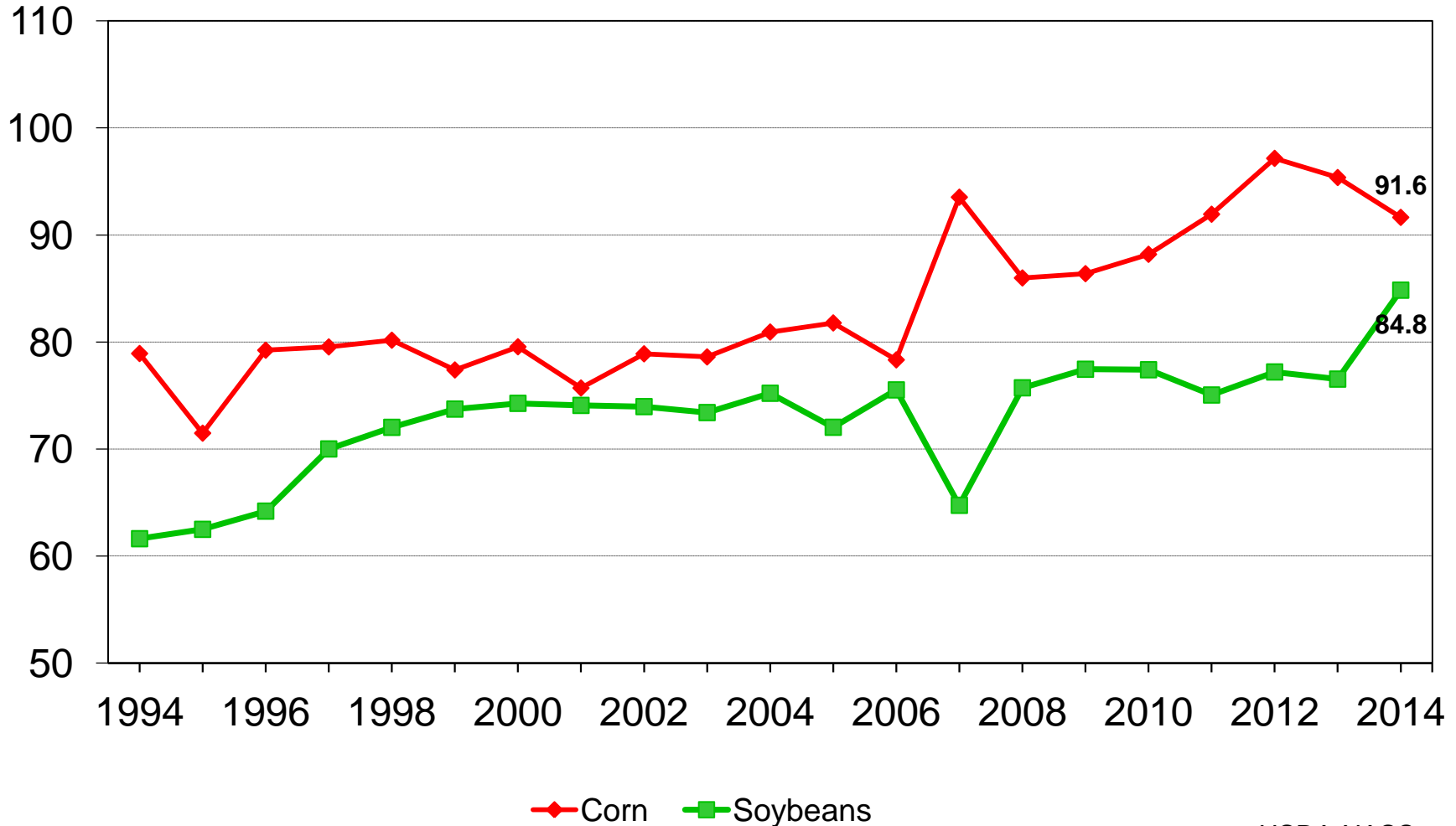
U.S. 176,480 #
 4,582
 # Record High
 NC = No Change



U.S. Corn & Soybean Planted Acres

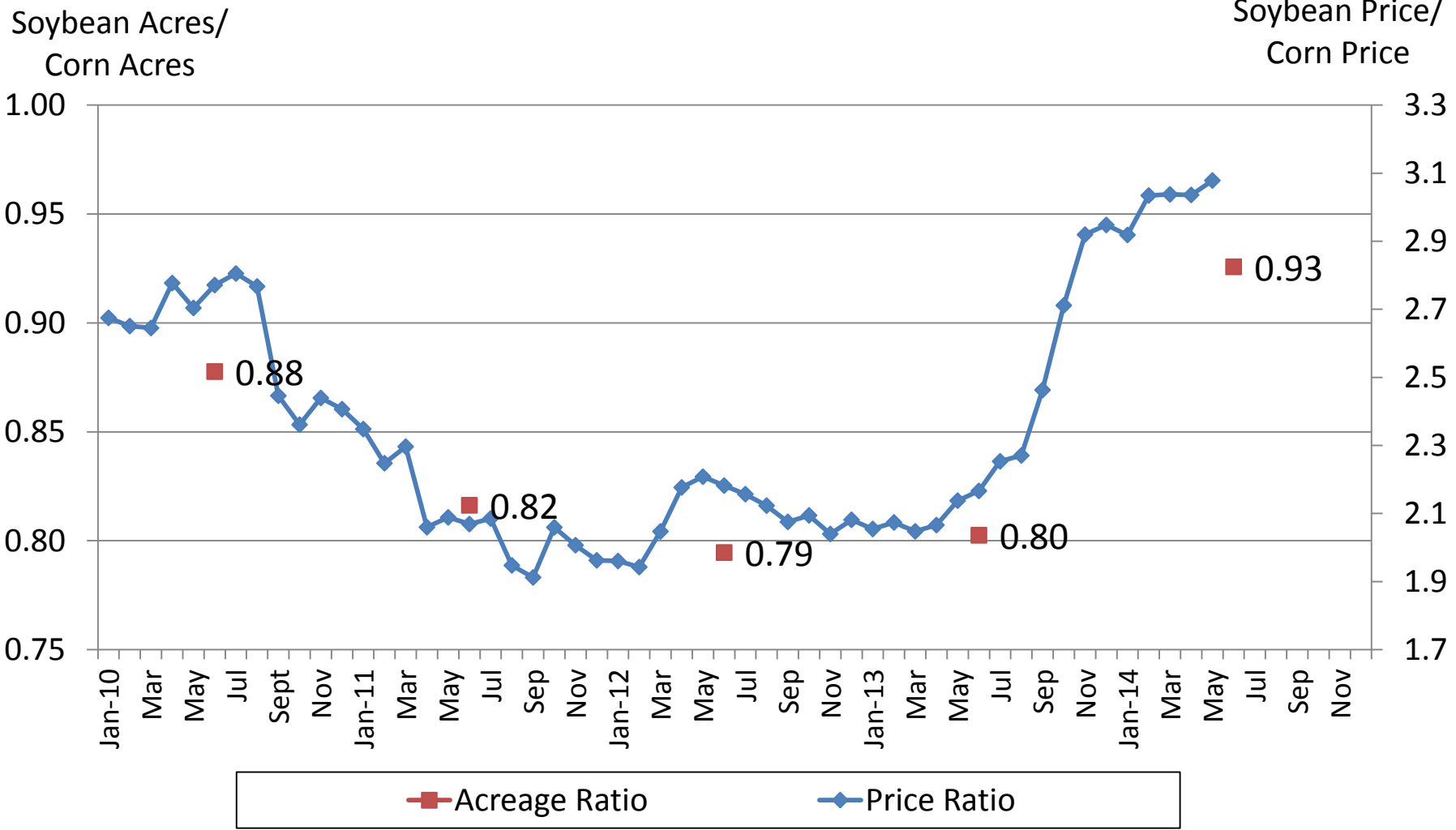


Million acres





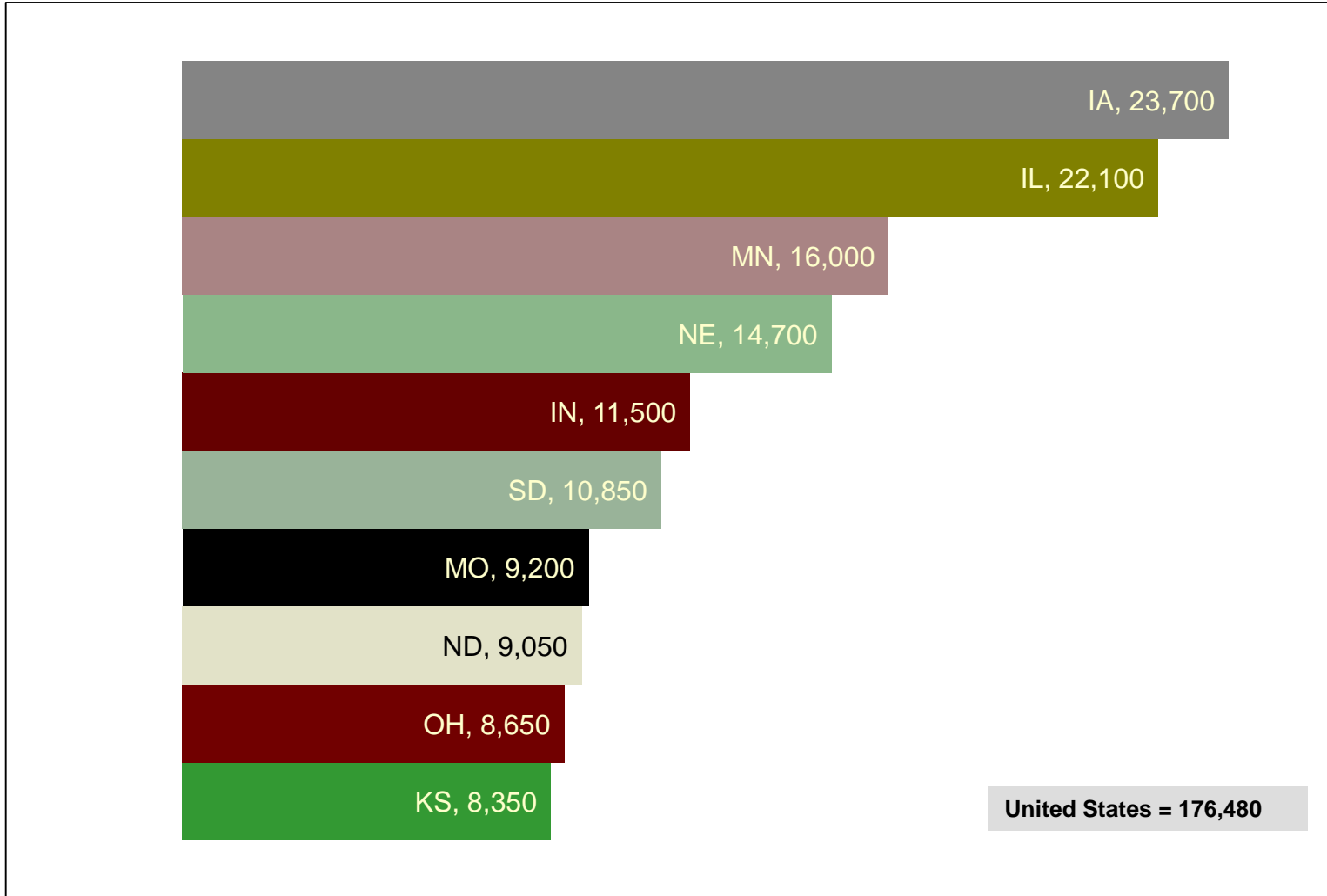
Soybean/Corn Acreage Ratio and Price Ratio (2010-2014)





2014 Corn & Soybean Planted

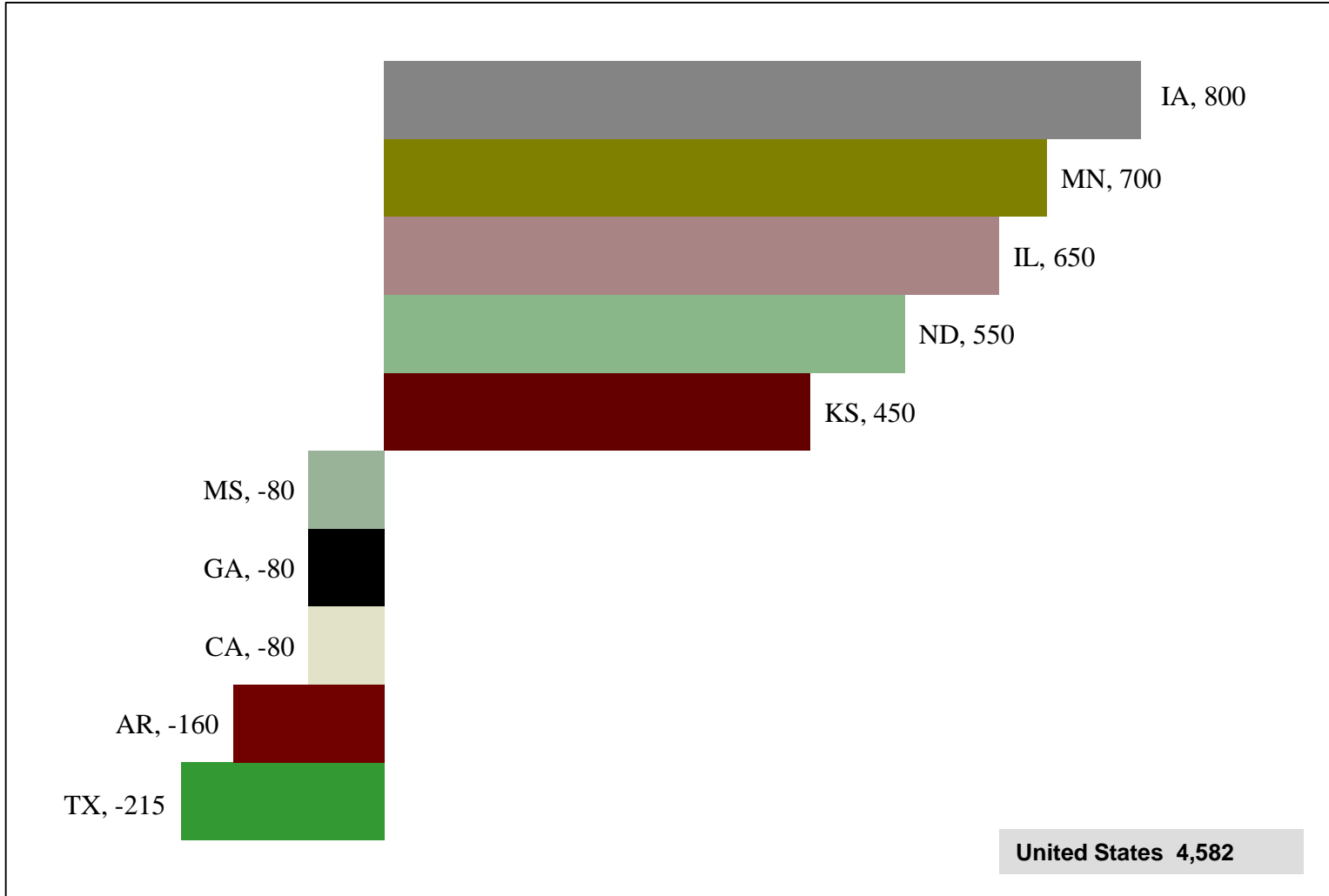
Top Ten States (1,000 Acres)





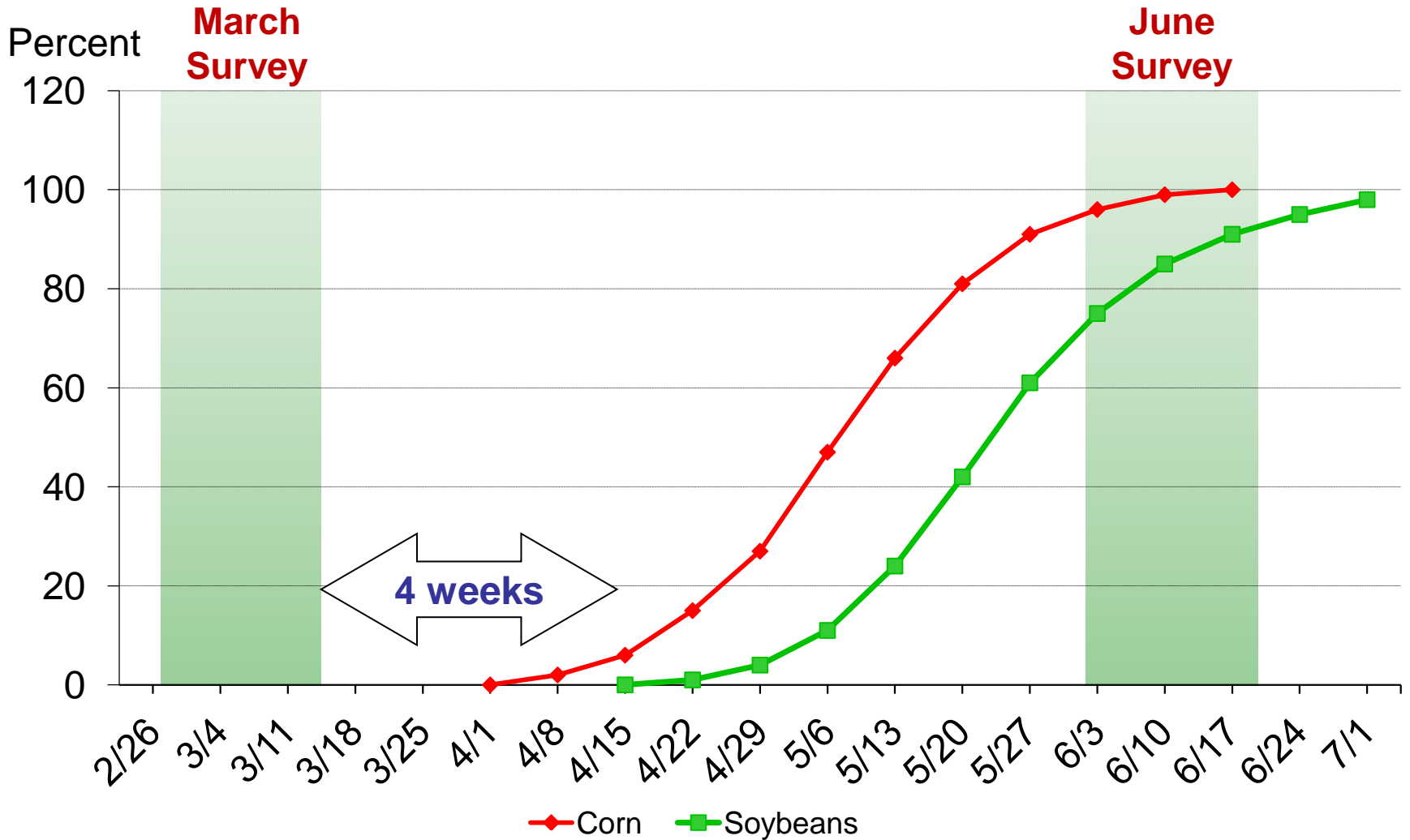
Corn & Soybeans Planted

2014 Change from 2013 (1,000 Acres)





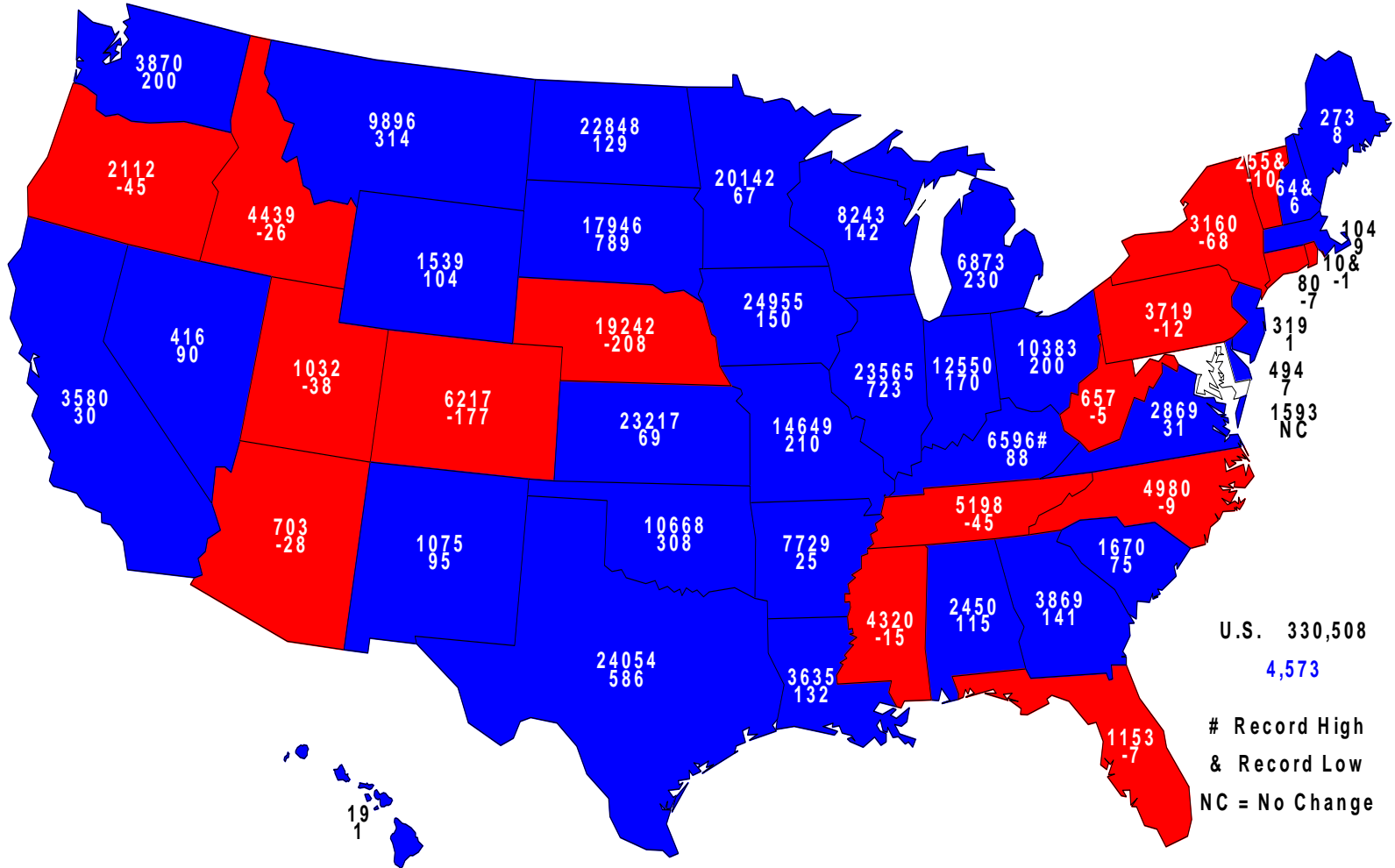
Acreage Intentions vs. Actual Planted Acres Usual Planting Progress





2014 Principal Crops Planted

Acres (000) and Change From Prospective Plantings



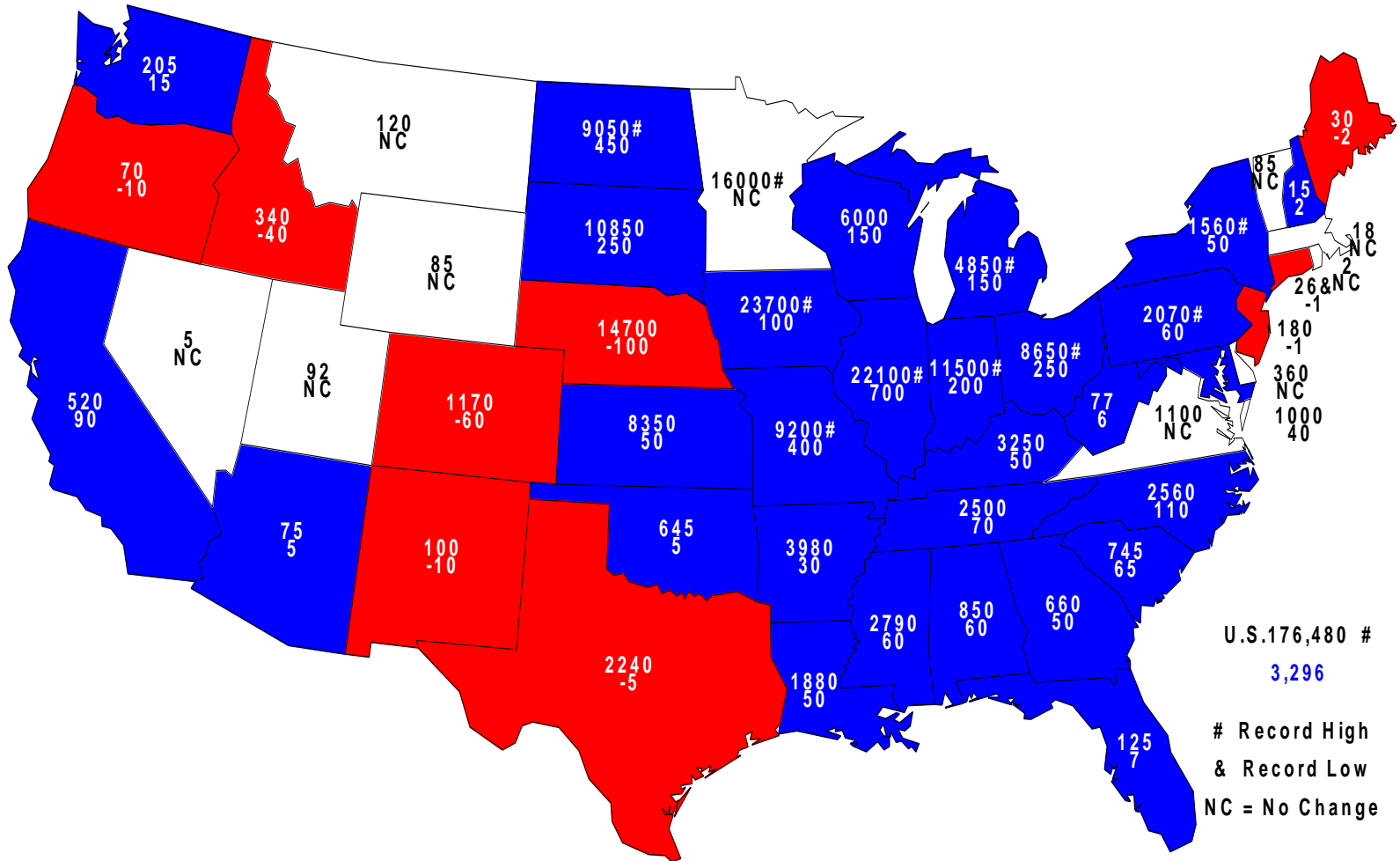
U.S. 330,508
4,573

Record High
& Record Low
NC = No Change



2014 Combined Corn & Soybeans Planted

Acres (000) and Change From Prospective Plantings

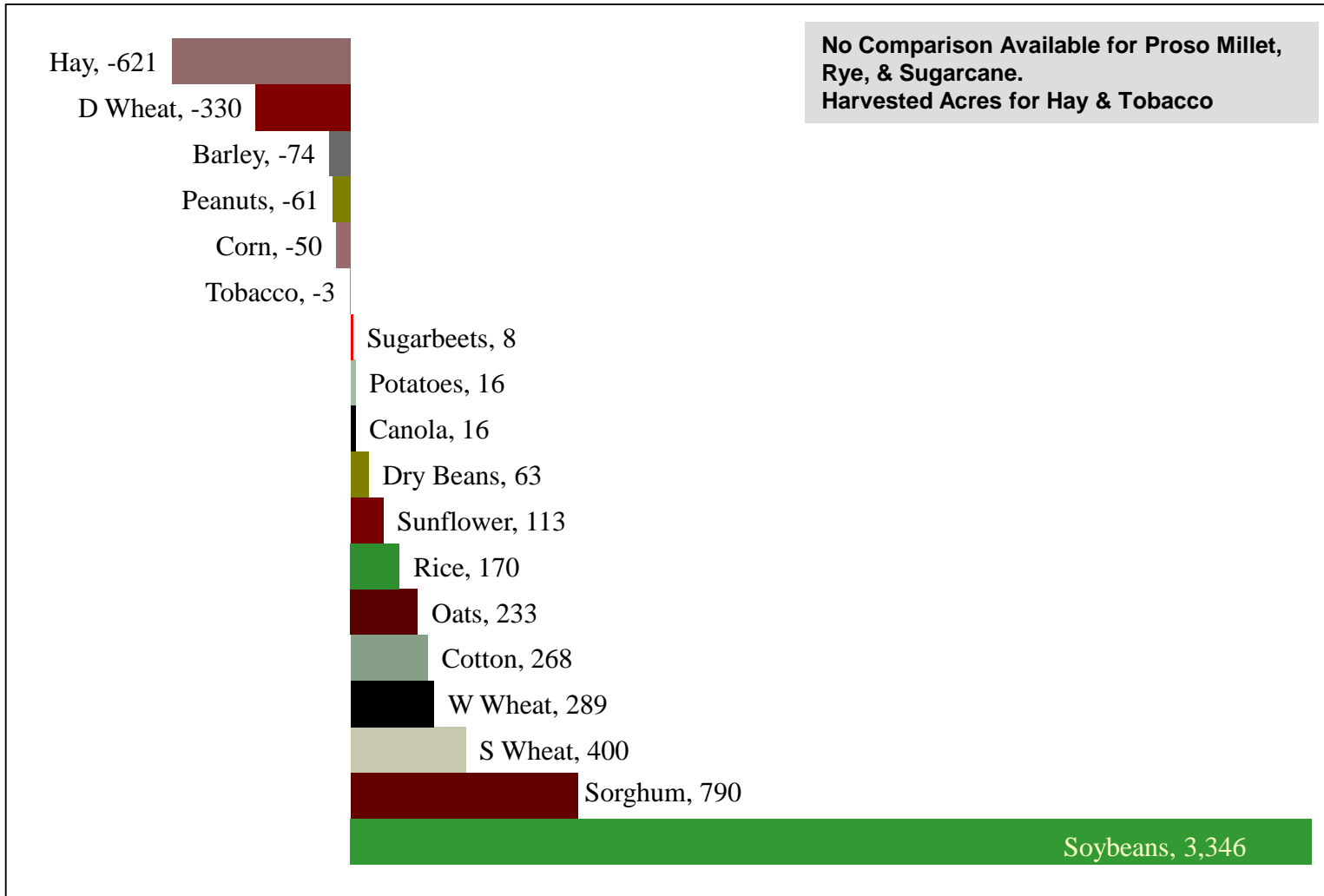


U.S. 176,480 #
 3,296
 # Record High
 & Record Low
 NC = No Change



Change in Planted Acres (000)

2014 Compared With March





Percent of Acres Remaining To Be Planted

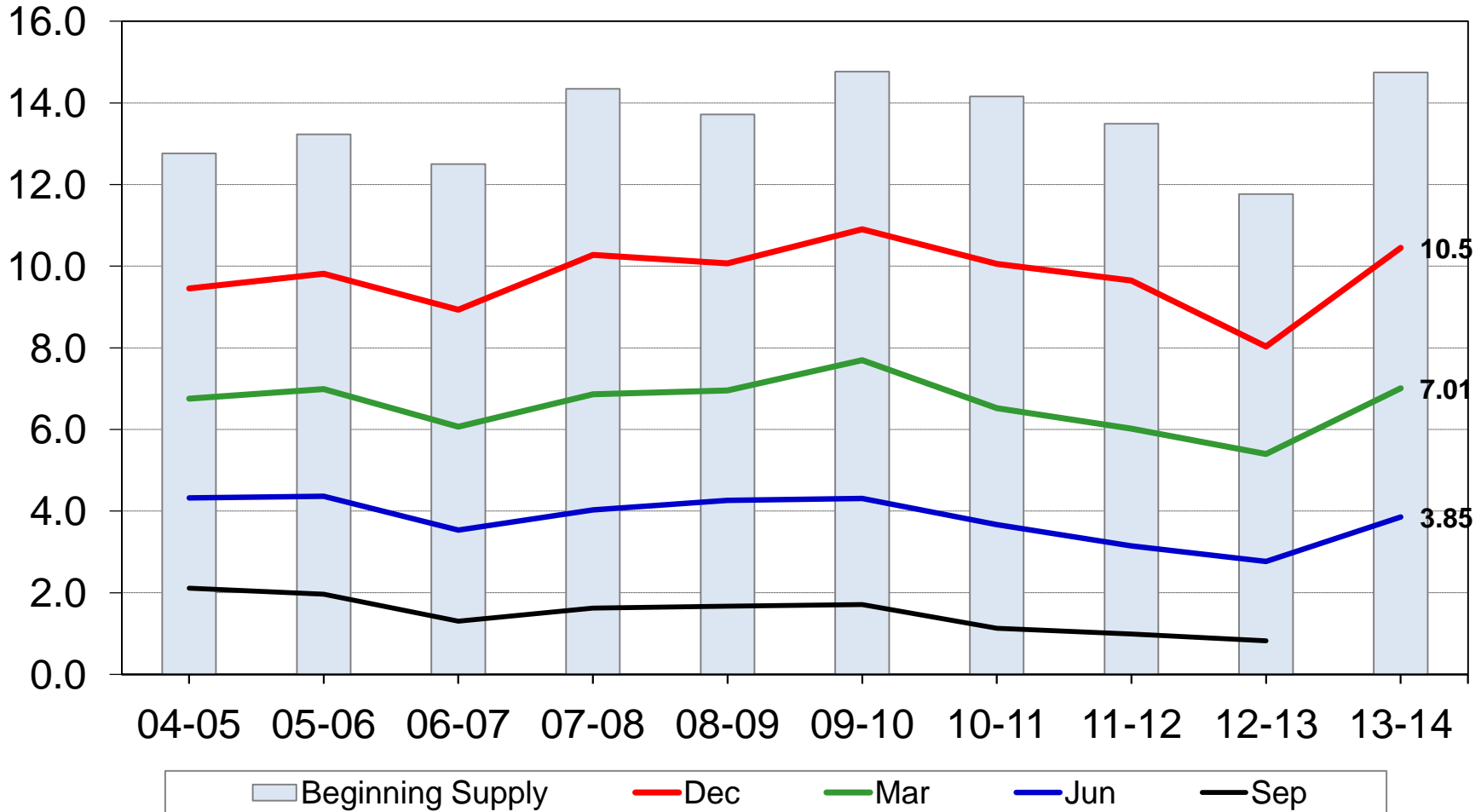
Crop	2010	2011	2012	2013	2014
			<i>---Percent---</i>		
Corn	1.4	4.3	0.7	3.4	2.3
Soybeans	13.4	25.9	6.5	26.9	13.2
Spring Wheat	1.7	17.4	0.0	6.3	7.0
Durum Wheat	8.5	30.7	<0.1	14.2	14.8



U.S. Corn Stocks



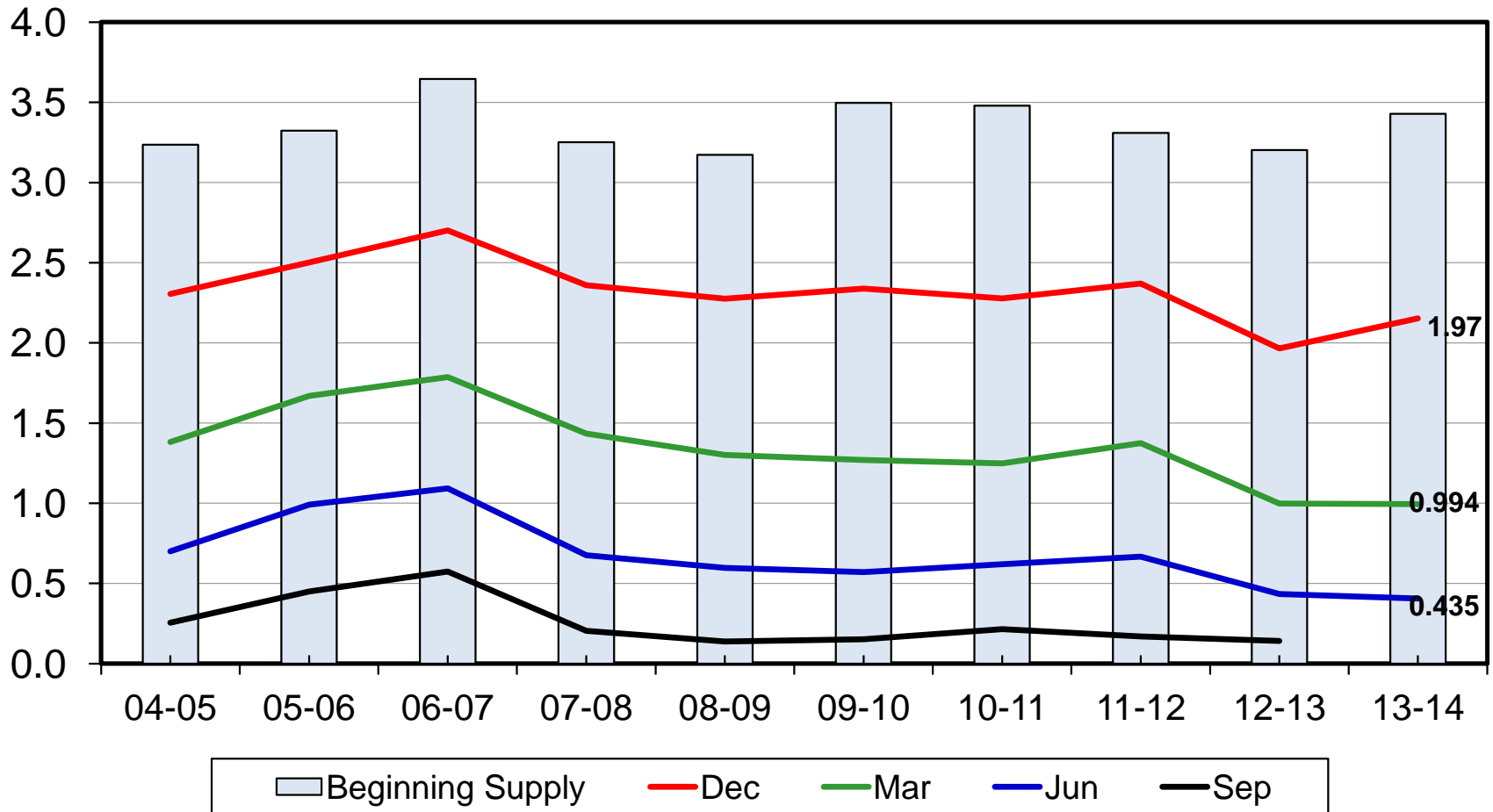
Billion bushels





U.S. Soybean Stocks

Billion bushels





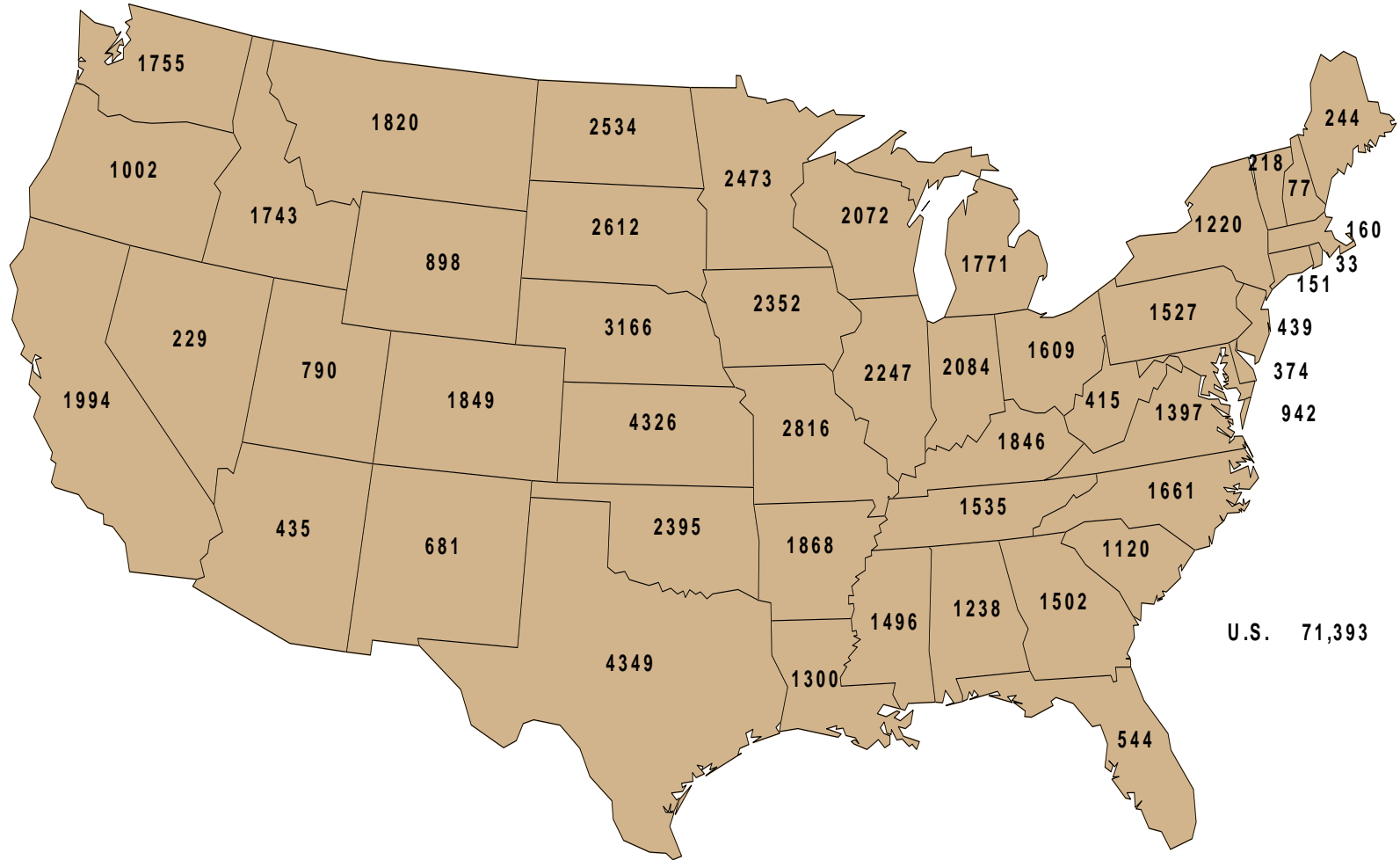
Survey Overview



	June Ag Survey	June Area Survey
Survey Type	Farmer Reported	Farmer Reported
Collection Method	Mail, Phone, Internet, Personal Interview	Personal Interview
Crops Included	Field Crops	Field Crops
States	All except HI	All except AK and HI
Sample Size	~71,400 farms	~11,000 segments
Collection Period	May 30 – June 18	May 30 – June 16

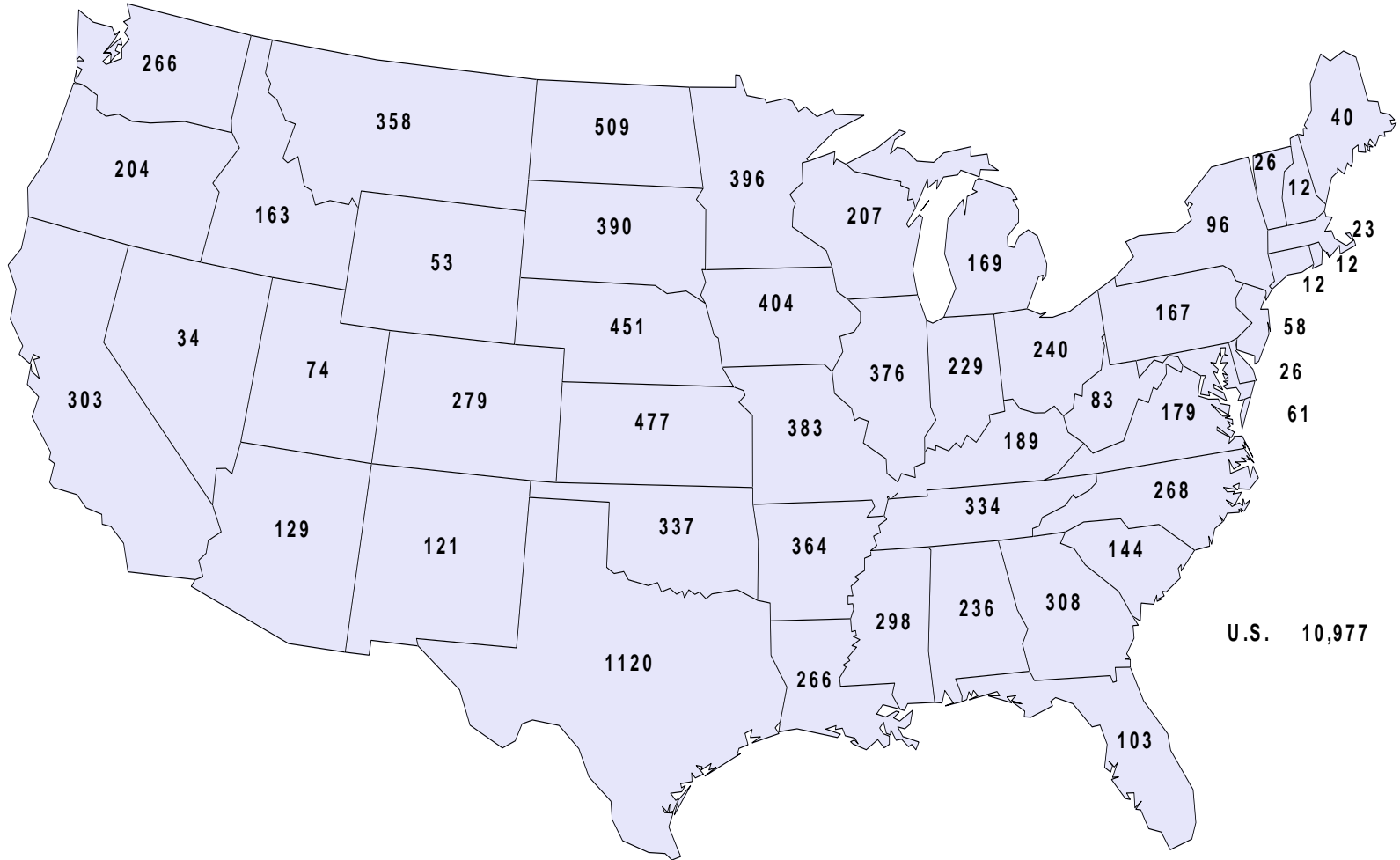


June 2014 List Sample Sizes



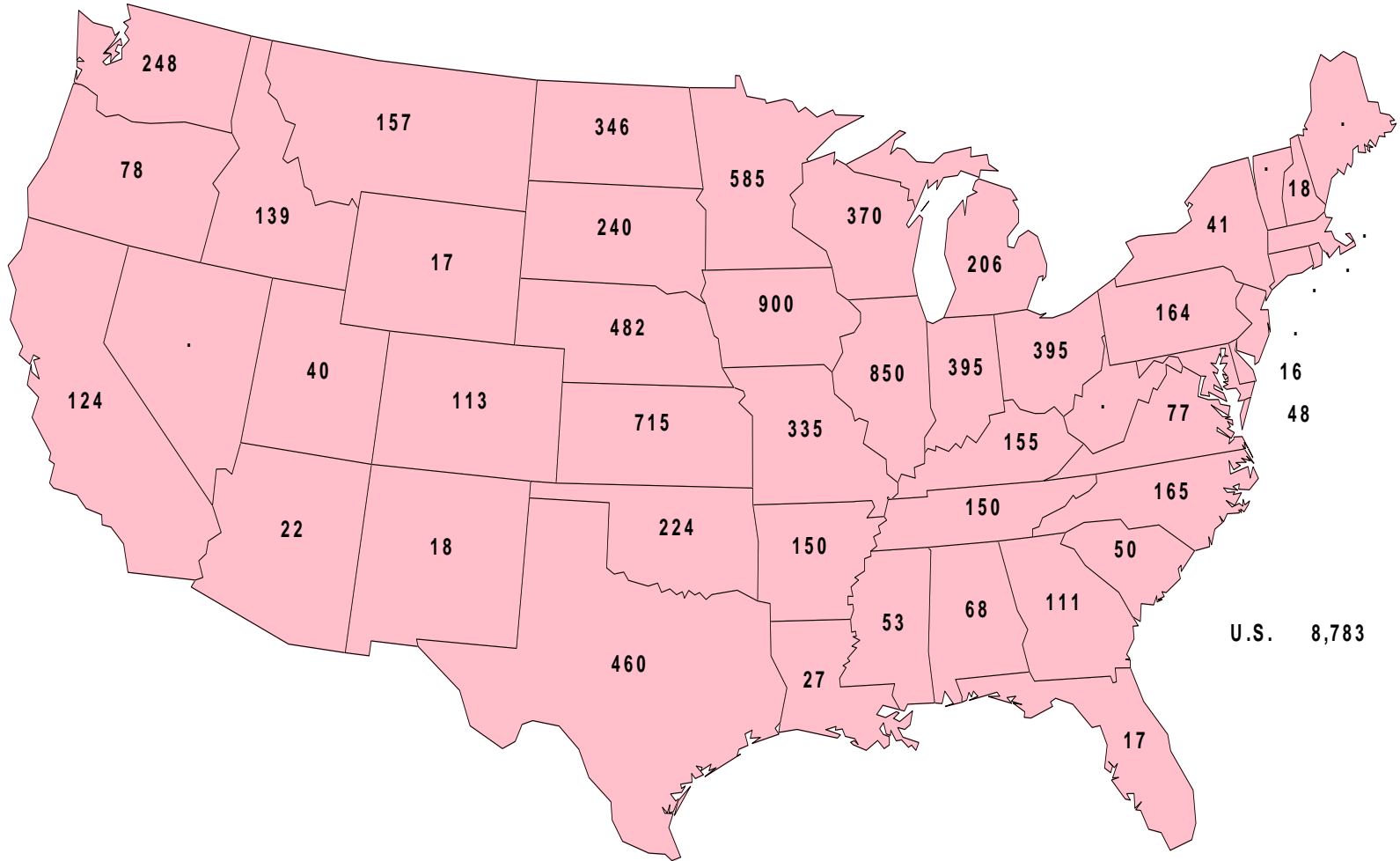


June 2014 Area Sample Sizes Number of Segments





December 1, 2013 Number of Off Farm Storage Facilities



**United States Department of Agriculture
National Agricultural Statistics Service**

Full Reports Available At

www.nass.usda.gov

For Questions

202-720-2127

Lance.Honig@nass.usda.gov