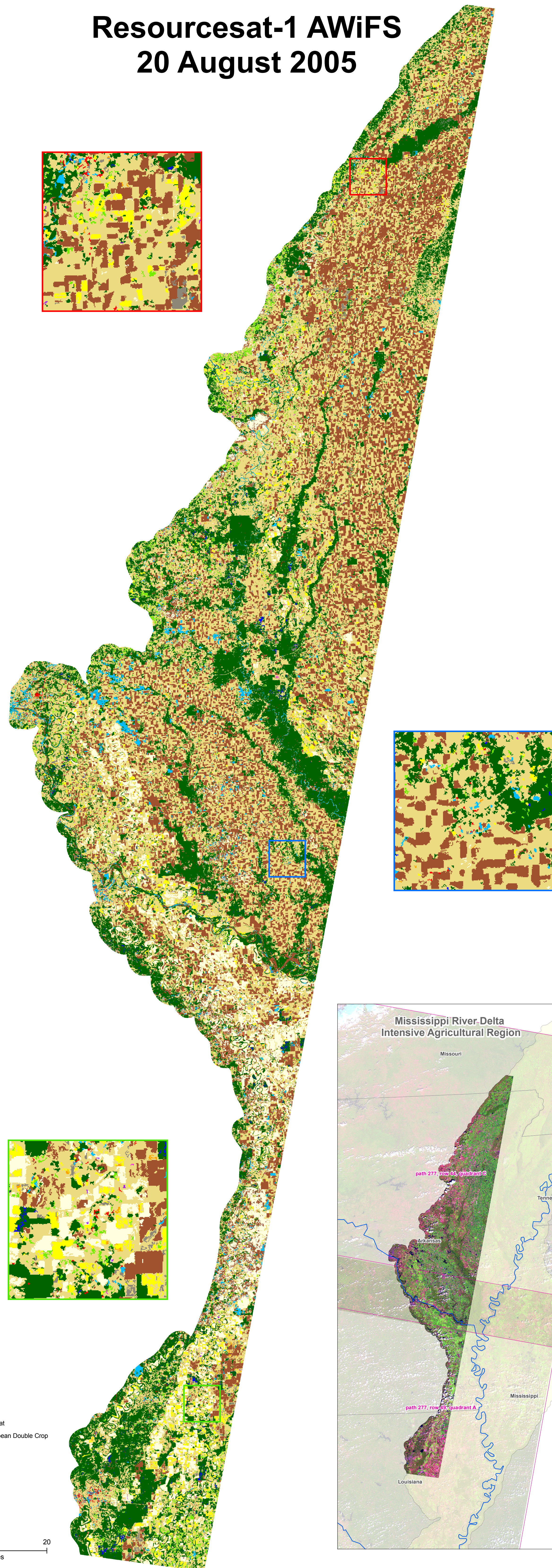
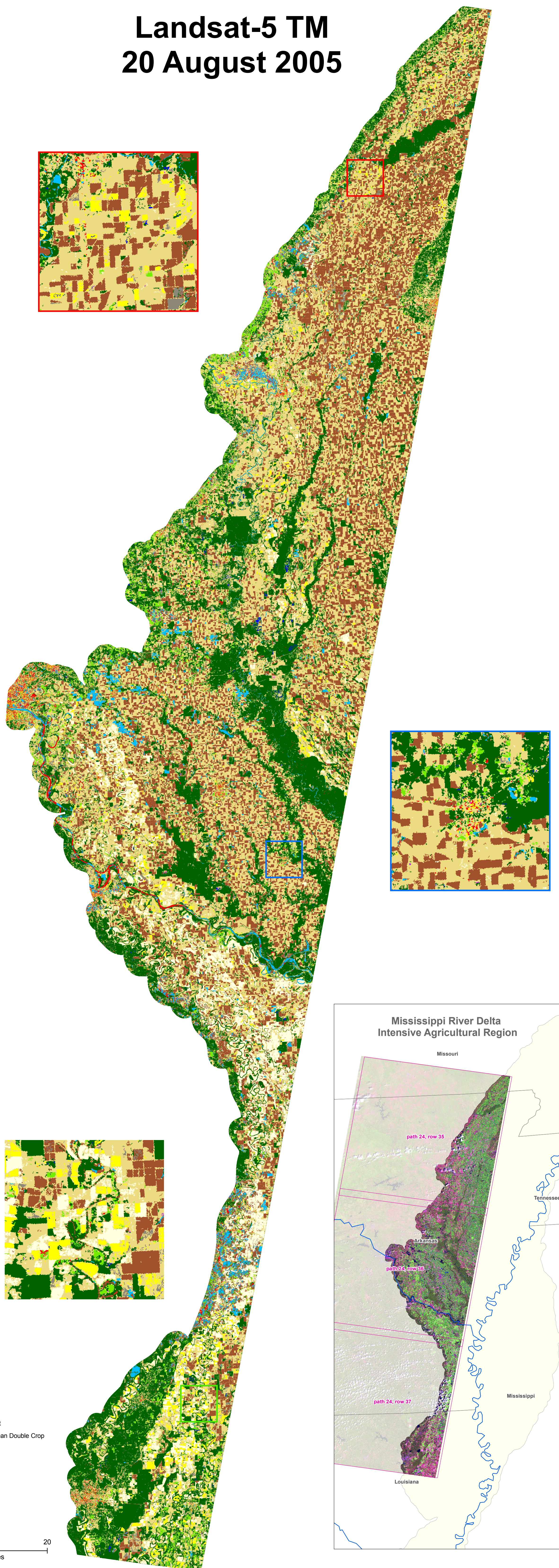


Landsat-5 TM 20 August 2005

Resourcesat-1 AWiFS 20 August 2005



- Corn
- Cotton
- Rice
- Sorghum
- Soybean
- Winter Wheat
- Wheat/Soybean Double Crop
- Fallow
- Aquaculture
- Pasture
- Woodland
- Urban
- Water

- Corn
- Cotton
- Rice
- Sorghum
- Soybean
- Winter Wheat
- Wheat/Soybean Double Crop
- Fallow
- Aquaculture
- Pasture
- Woodland
- Urban
- Water

0 10 20
Miles

0 10 20
Miles



Pixel size: TM - 30 meter squared, AWiFS - 56 meter squared
 Minimum mapping unit: 5 pixels
 Training and validation data: approximately 100,000 acres from about 2000 randomly distributed area visits during the 2005 NASS June Agricultural Survey
 Minimum accuracy: TM - 67.9% (overall), 76.3% (cropland) AWiFS - 63.8% (overall), 74.3% (cropland)
 Overall area classified in common: 73.5%
 Data preparation: Leica Geosystems ERDAS Imagine Image classification: Rulequest See5 Map layout: ESRI ArcGIS

David M. Johnson, Geographer
 USDA/National Agricultural Statistics Service
 Research and Development Division

Cropland Classifications of Coincident TM and AWiFS Imagery