

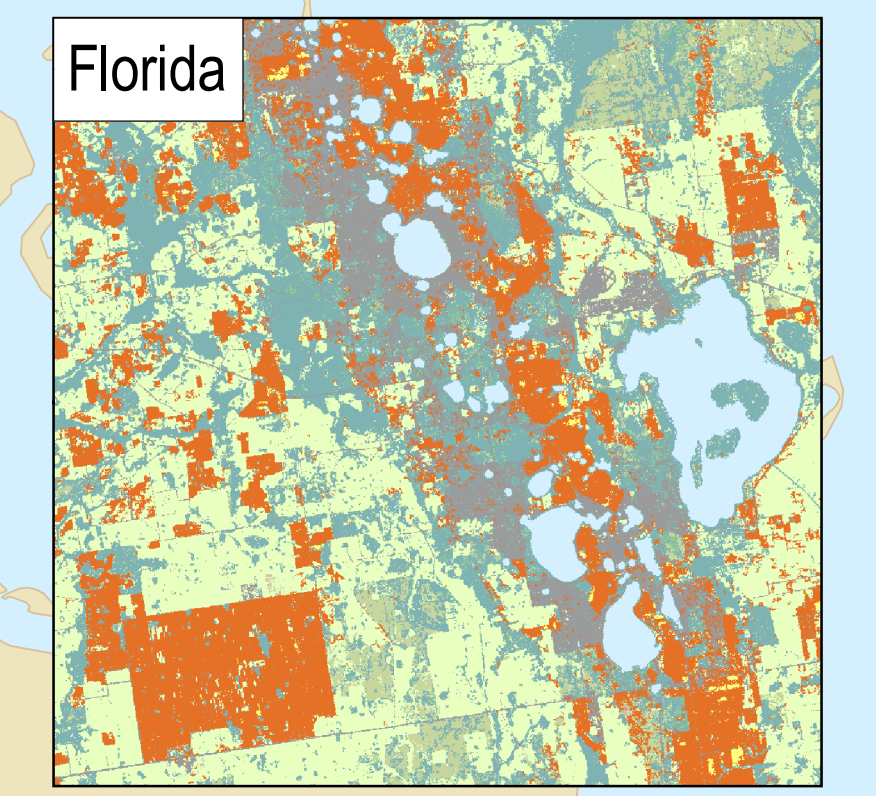
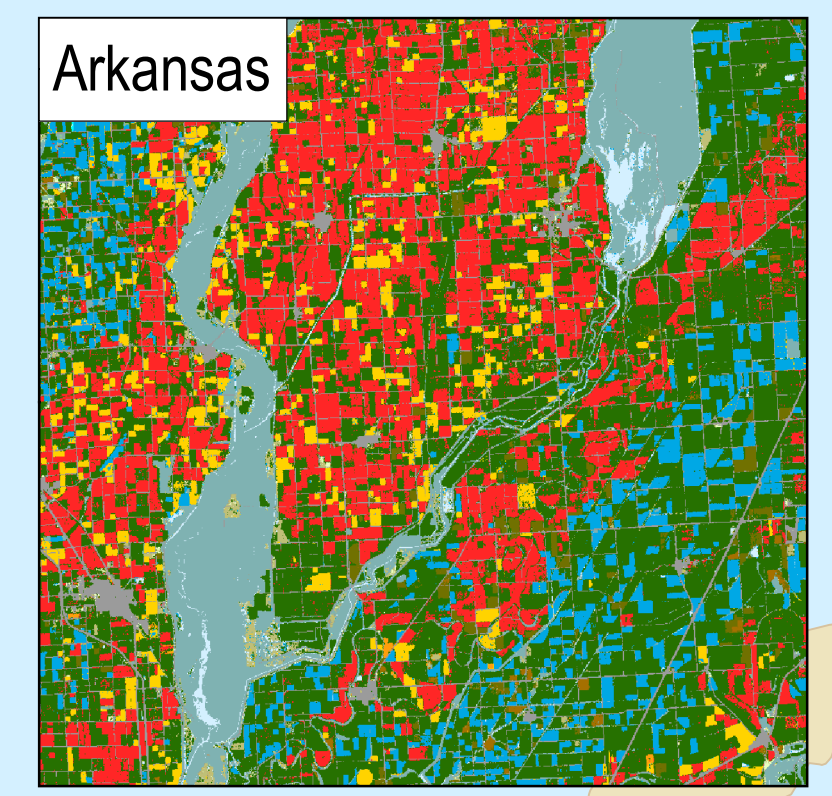
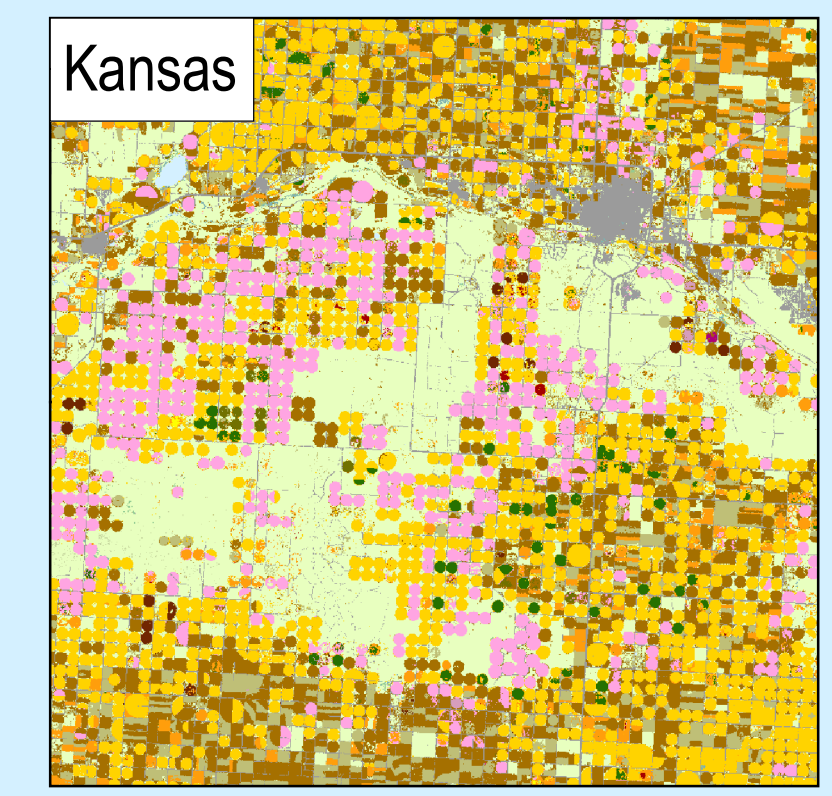
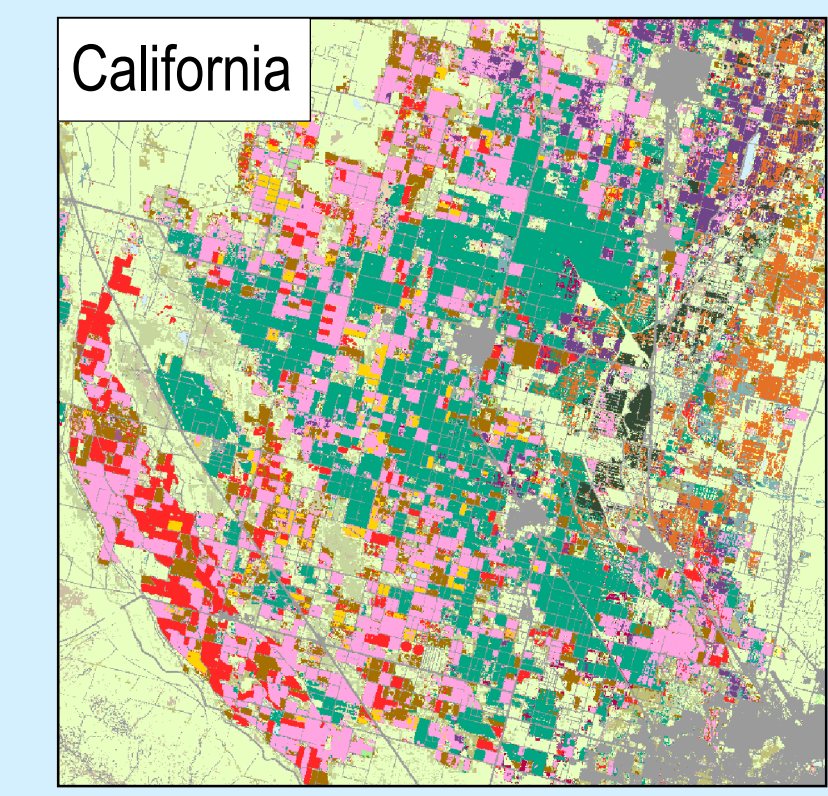
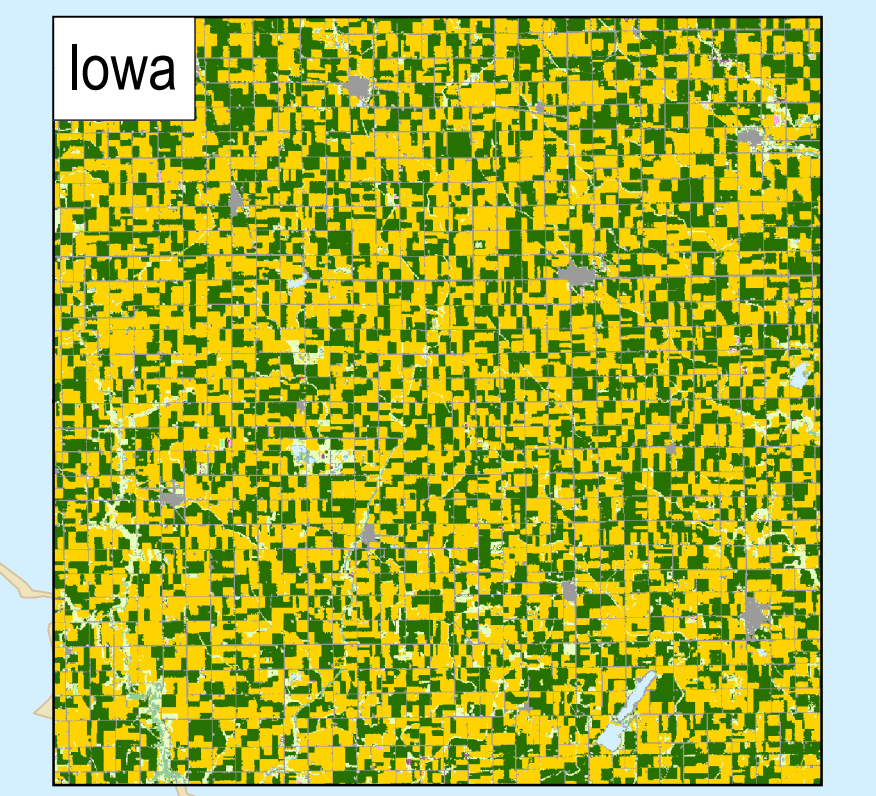
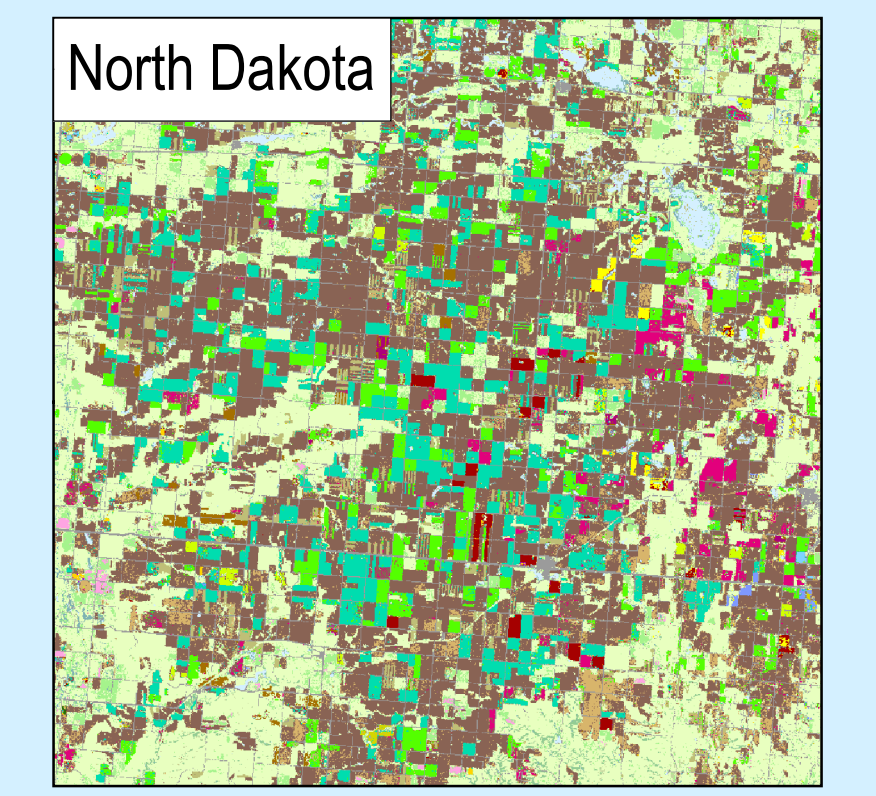
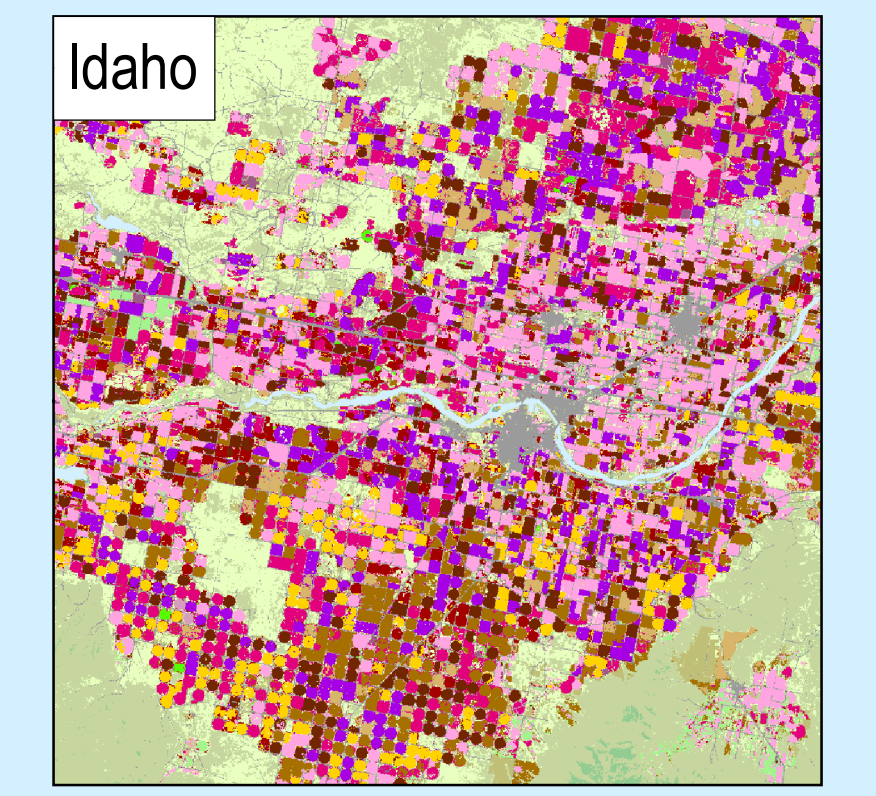
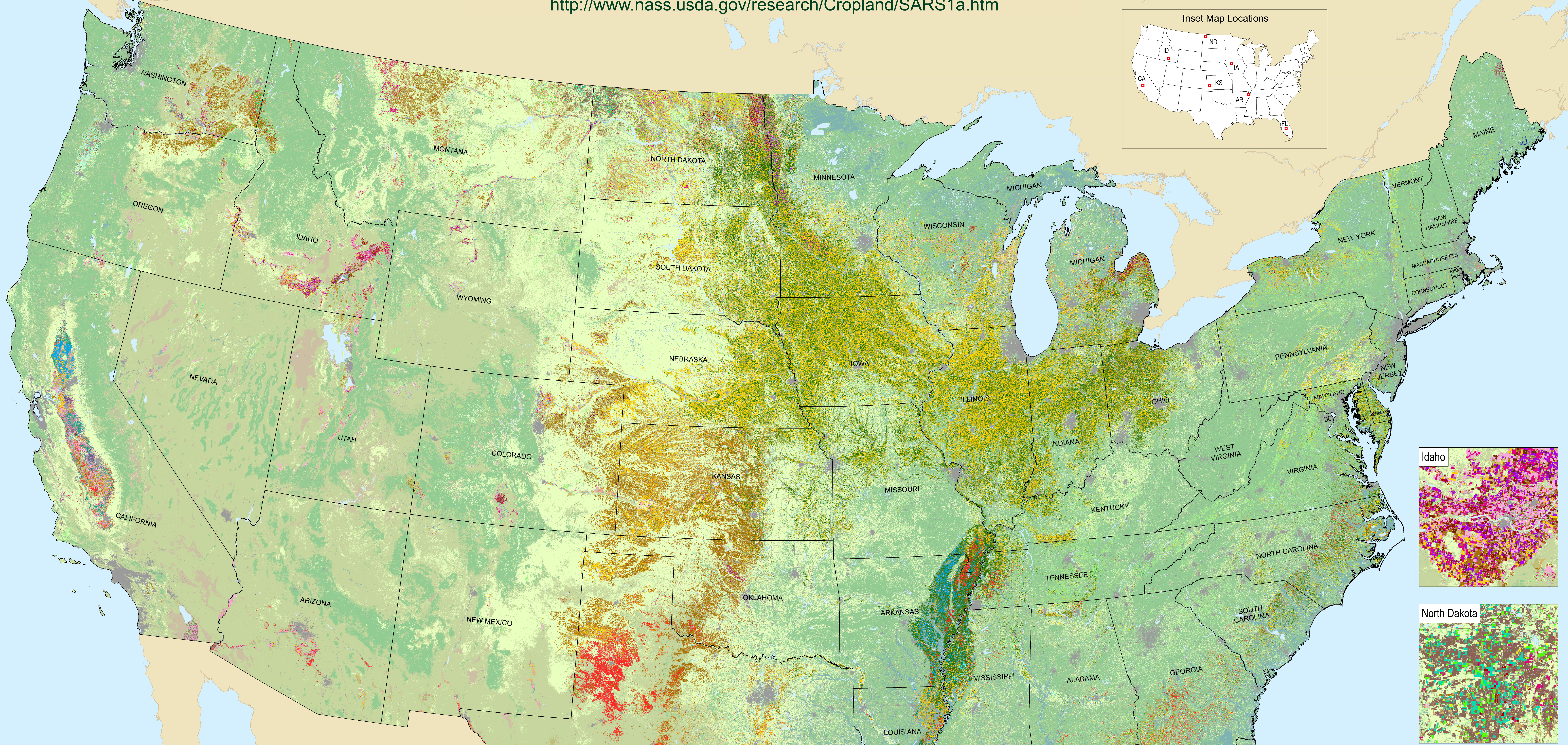
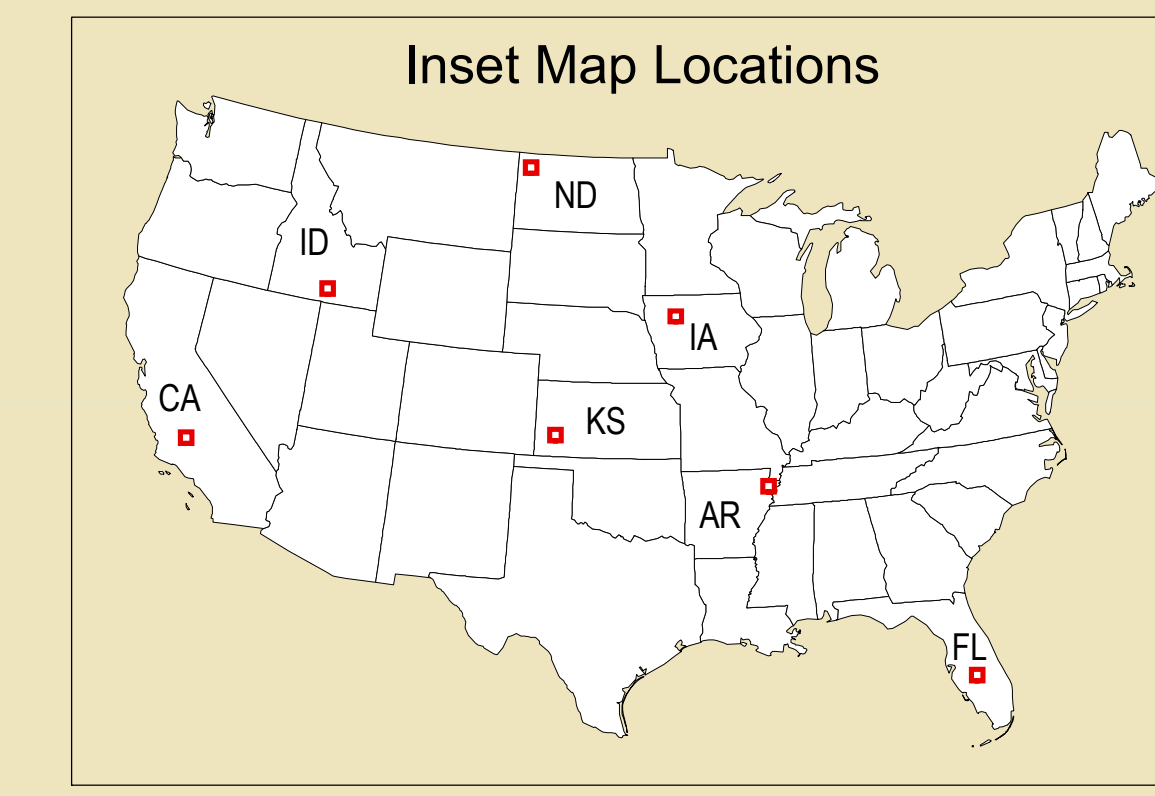


2009 Cropland Data Layers



United States Department of Agriculture, National Agricultural Statistics Service

<http://www.nass.usda.gov/research/Cropland/SARS1a.htm>



Land Cover Categories (by decreasing acreage)

Agriculture		
Pasture/Grass	Potatoes/Sweet Potatoes	Tomatoes
Corn	Sugarbeets	Clover/Wildflowers
Soybeans	Sod/Grass Seed	Other Small Grains
Winter Wheat	Peas	Safflower
Other Hay	Almonds	Peaches/Plums/Apricots
Fallow/Idle Cropland	Canola	Herbs
Spring Wheat	Sugarcane	Blueberries
Alfalfa	Walnuts/Pistachios/Pecans	Olives
Cotton	Grapes	Onions
Sorghum	Millet	Christmas Trees
W. Wht./Soy. Dbl. Crop	Misc. Vegs. & Fruits	
Rice	Lentils	
Durum Wheat	Rye	
Barley	Other Tree Nuts/Fruits	
Sunflower	Apples/Cherries/Pears	
Oats	Flaxseed	
Dry Beans	Other Crops	
Peanuts	Aquaculture	
Oranges	Citrus	

Non-Agriculture		
Woodland		
Shrubland		
Urban/Developed		
Wetlands		
Water		
Barren		
Perennial Ice/Snow		

Produced by: U. S. Department of Agriculture, National Agricultural Statistics Service, Research and Development Division, Geospatial Information Branch, Spatial Analysis Research Section.

Contact: Rick_Mueller@nass.usda.gov

Image Analysis by: C. Boryan, B. Calin, M. Craig, D. M. Johnson, M. Lindsey, F. Shore, P. Willis, A. Zakzeski.

Data Analysis and Preparation, and Cartography by: L. Beard, L. Ebinger, R. Seffrin, G. Wade, Z. Yang.

Data Sources: Resourcesat-1 AWFS courtesy of USDA Foreign Agricultural Service, Landsat 5 Thematic Mapper and Landsat 7 Enhanced Thematic Mapper Plus.

Image Processing and Mapping Software: Rulequest Seed&ERDAS Imagine, ESRI ArcGIS 9.3.1.

Ground Truth: The Farm Service Agency Common Land Unit for crops classes, and 2001 National Land Cover Dataset (NLCD) for non-agricultural classes.

Auxiliary Data: NLCD Impervious Surface, NLCD Forest Canopy, National Elevation Dataset, and Moderate Resolution Imagery Spectroradiometer (MODIS) 16 day Normalized Difference Vegetation Index (NDVI) composite.

Map Projection and Scales: Albers Equal Area Conic Projection, NAD 1983 datum. U.S. 1:4,100,000; enlargements 1:500,000.

Map Production: ESRI ArcGIS 9.3.1.

