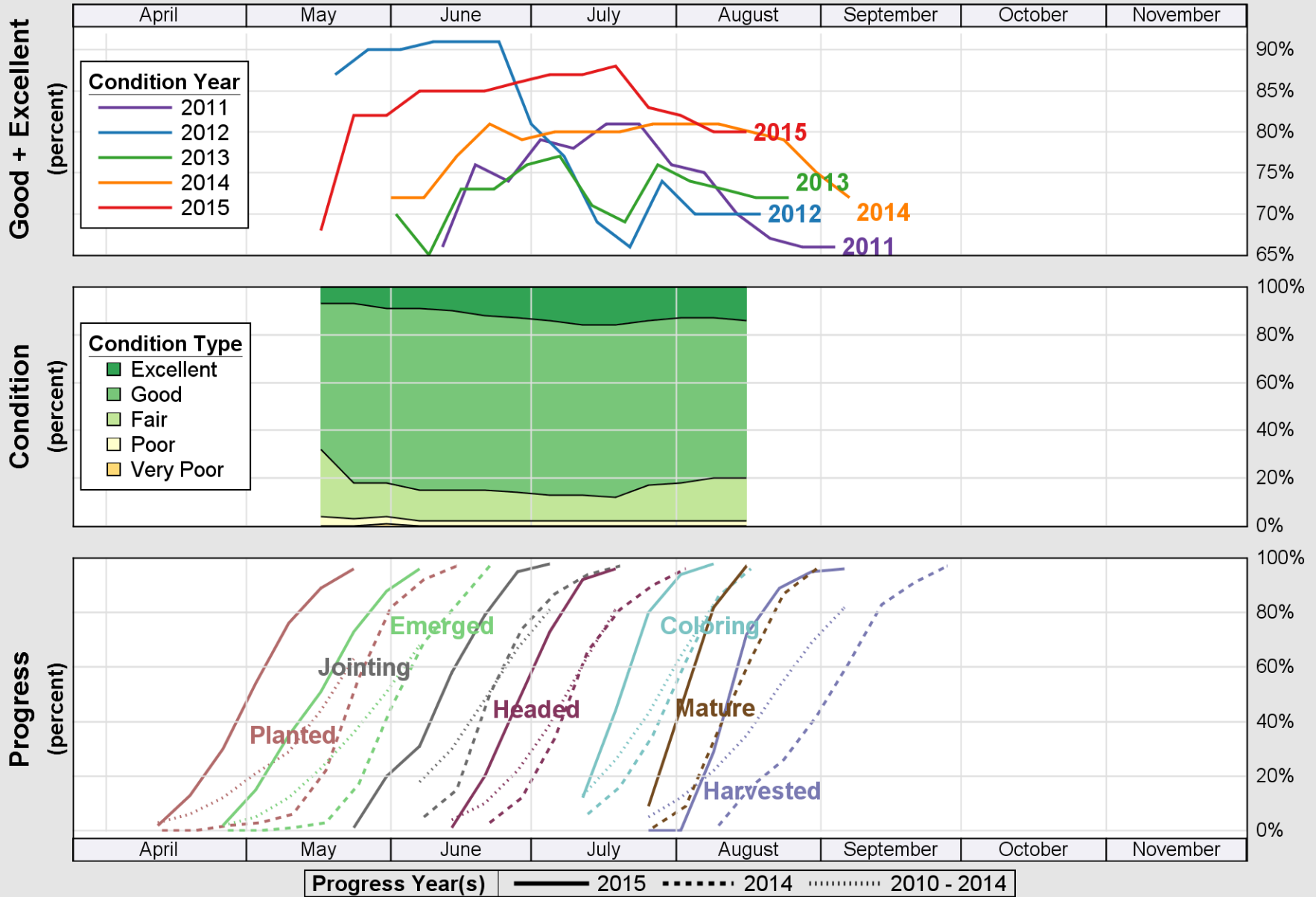


USDA

Crop Progress and Condition: Barley in North Dakota , 2015

NASS

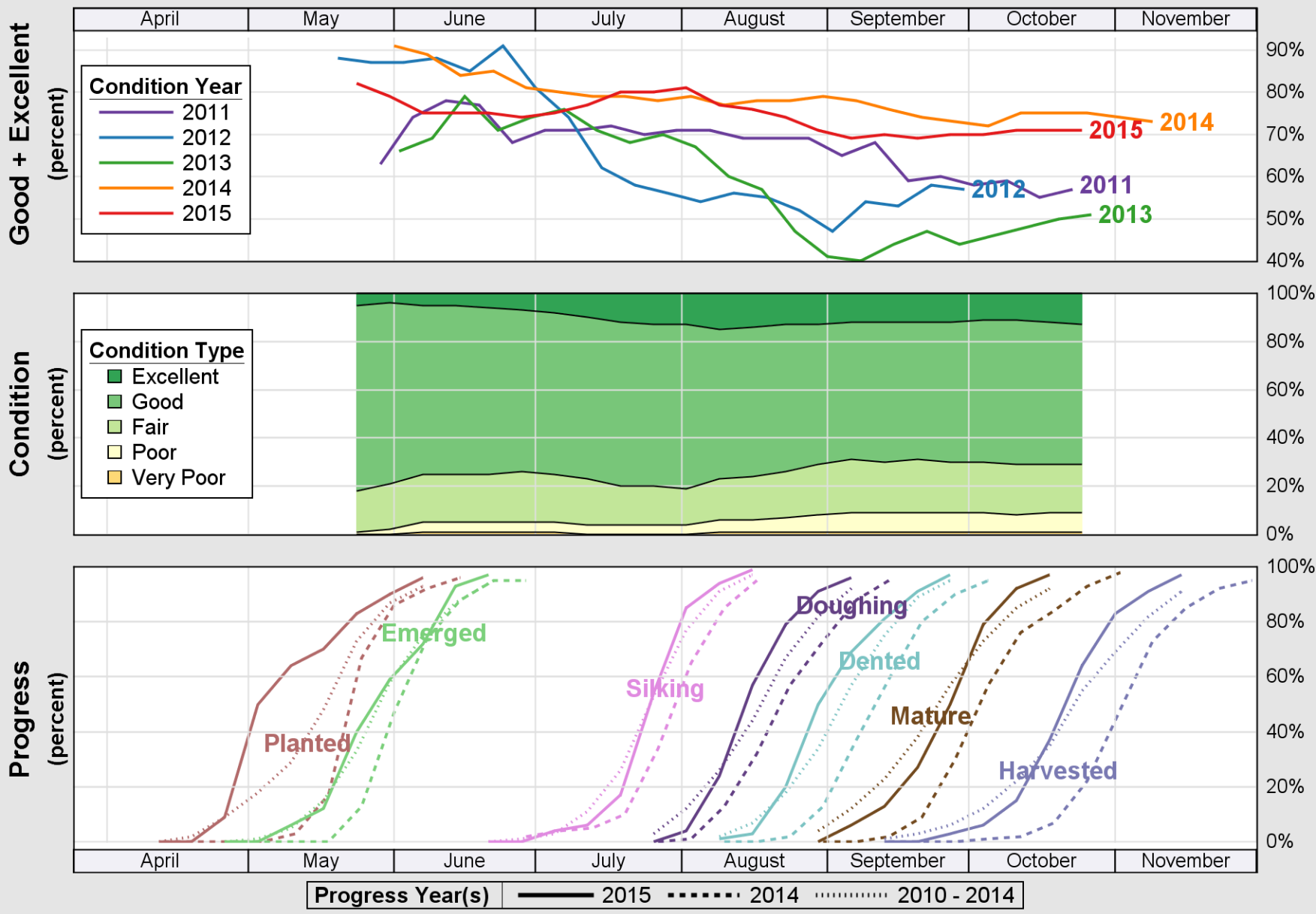


Source: National Agricultural Statistics Service (NASS), Crop Progress Report

USDA

Crop Progress and Condition: Corn in North Dakota , 2015

NASS

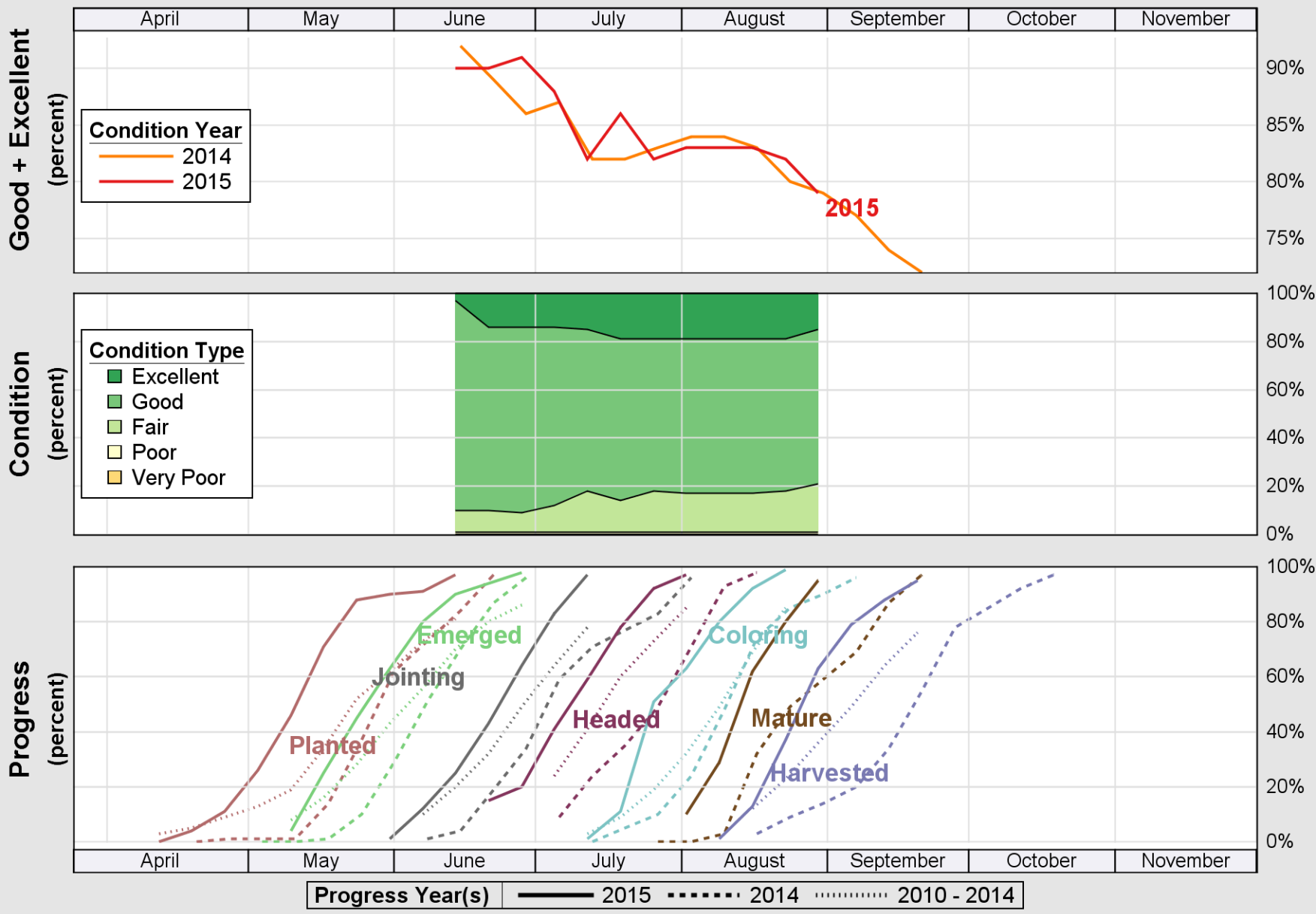


Source: National Agricultural Statistics Service (NASS), Crop Progress Report

USDA

Crop Progress and Condition: Durum Wheat in North Dakota , 2015

NASS

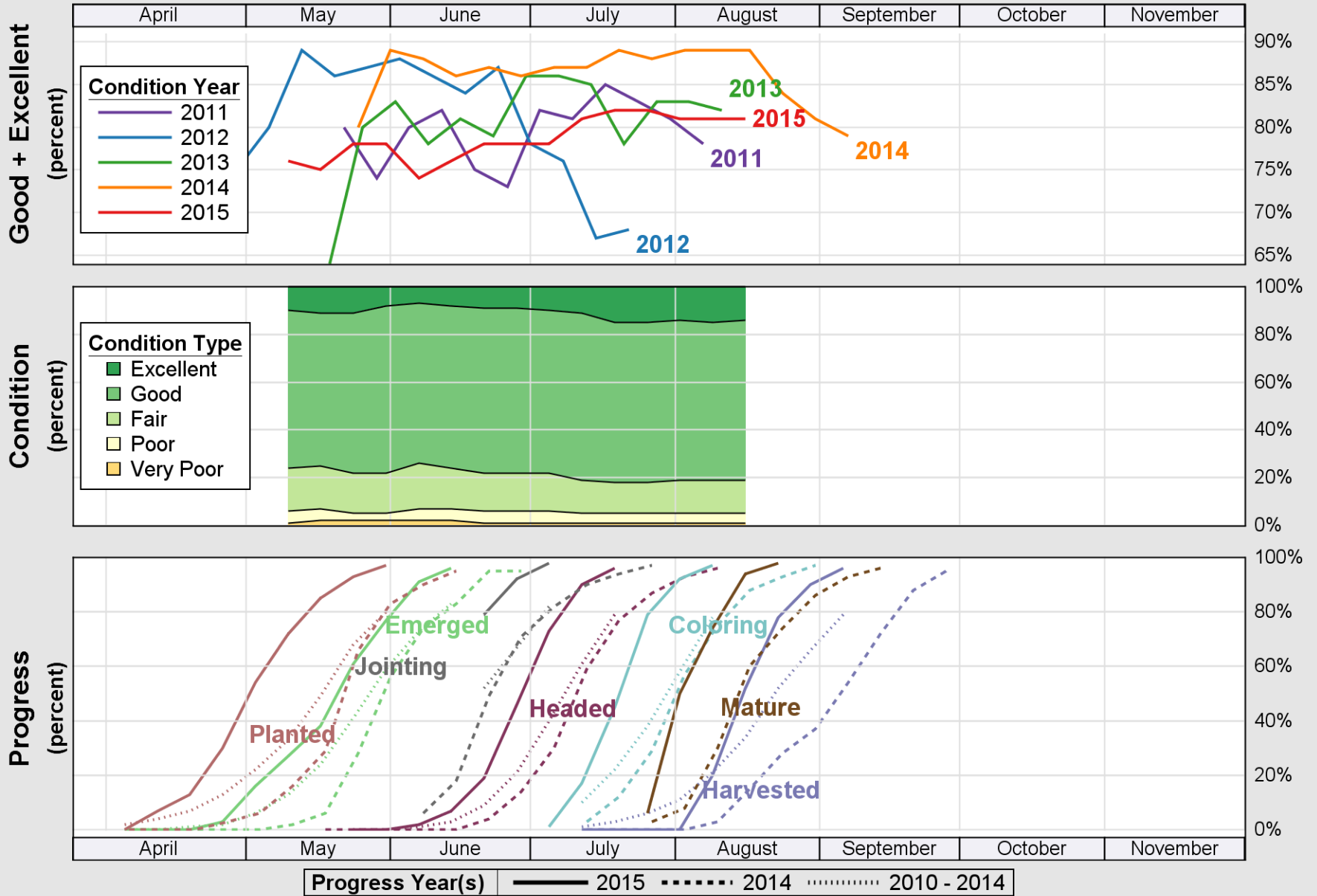


Source: National Agricultural Statistics Service (NASS), Crop Progress Report

USDA

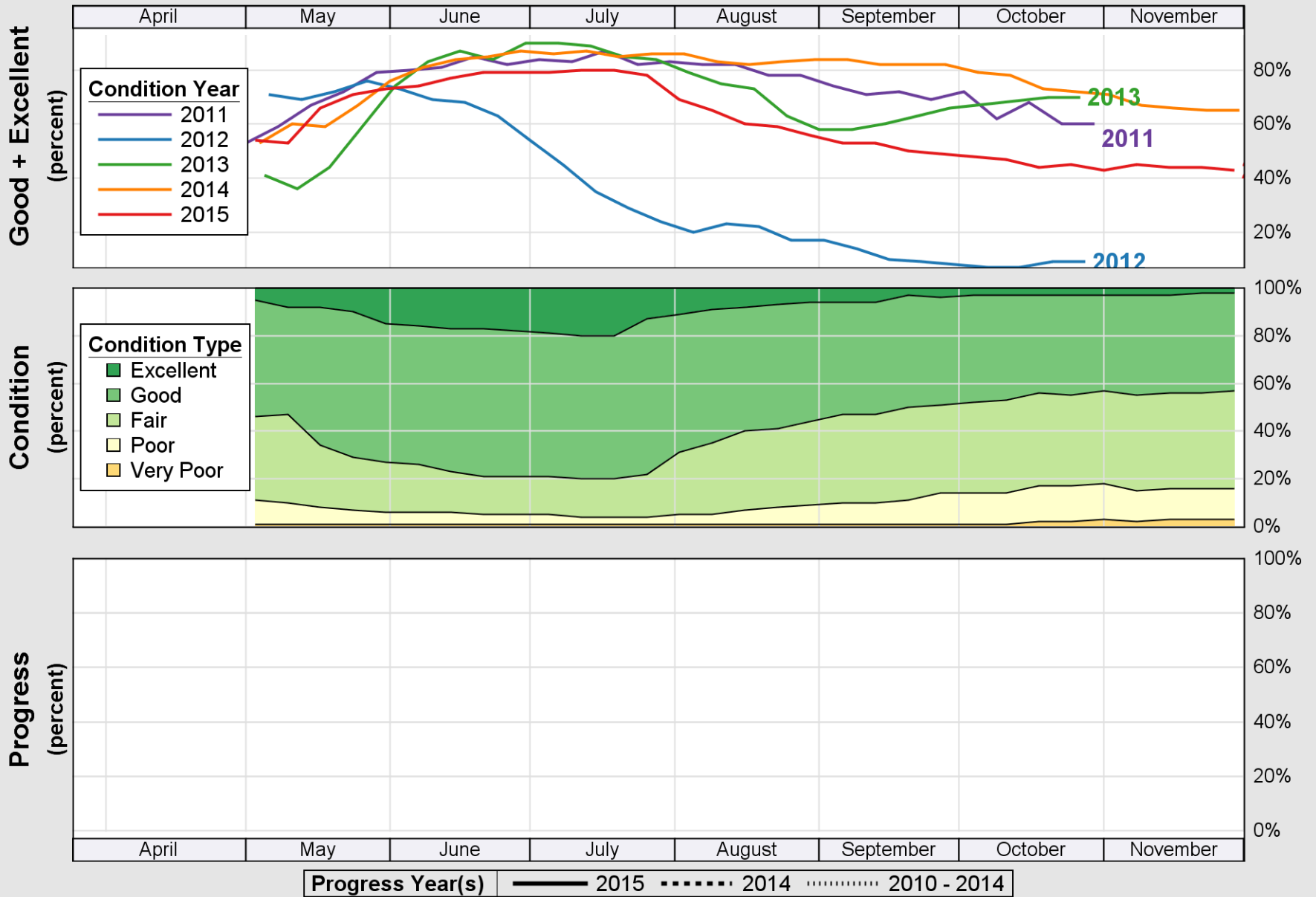
Crop Progress and Condition: Oats in North Dakota , 2015

NASS



Source: National Agricultural Statistics Service (NASS), Crop Progress Report

USDA Crop Progress and Condition: Pasture and Range in North Dakota , 2015 NASS

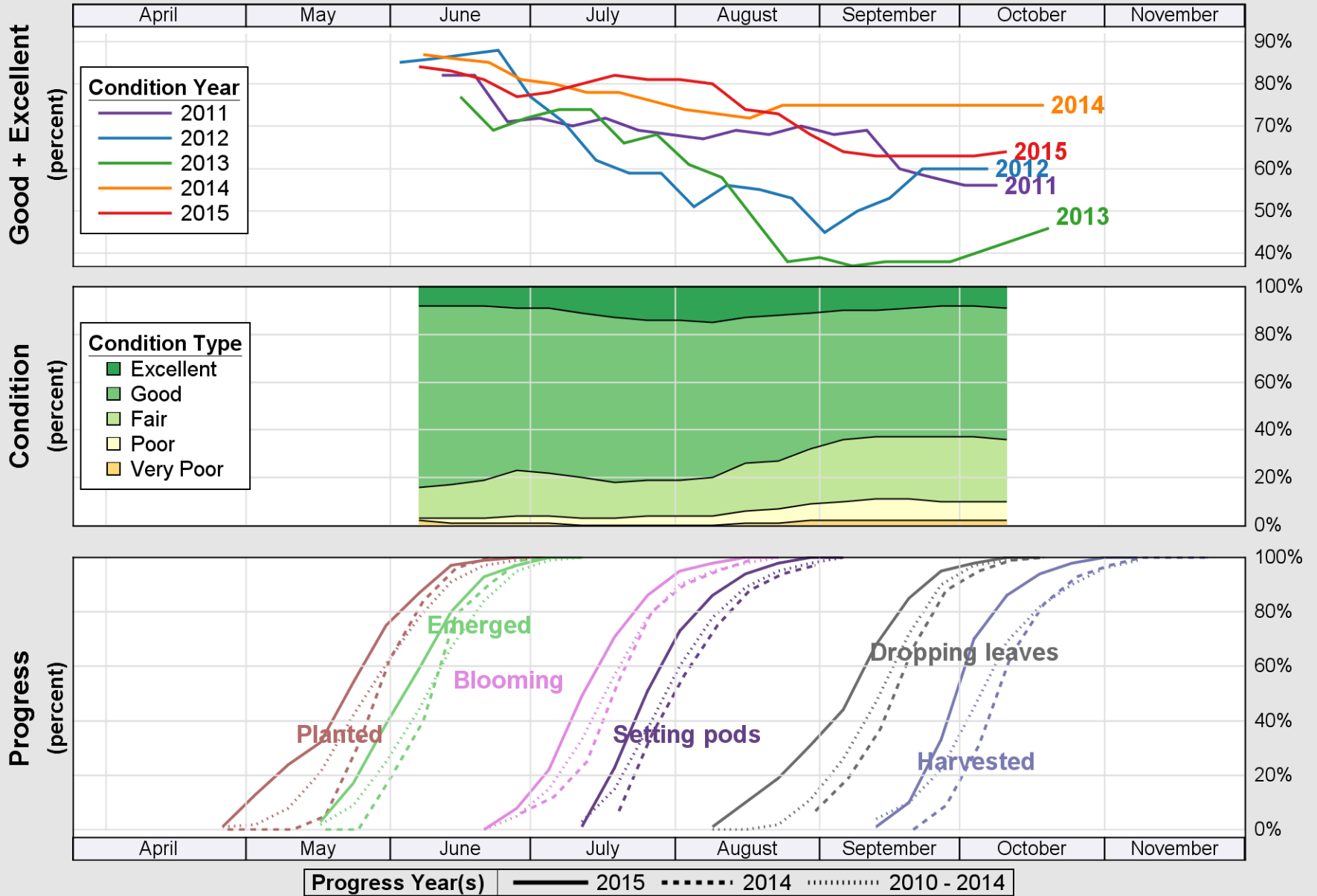


Source: National Agricultural Statistics Service (NASS), Crop Progress Report

USDA

Crop Progress and Condition: Soybeans in North Dakota , 2015

NASS

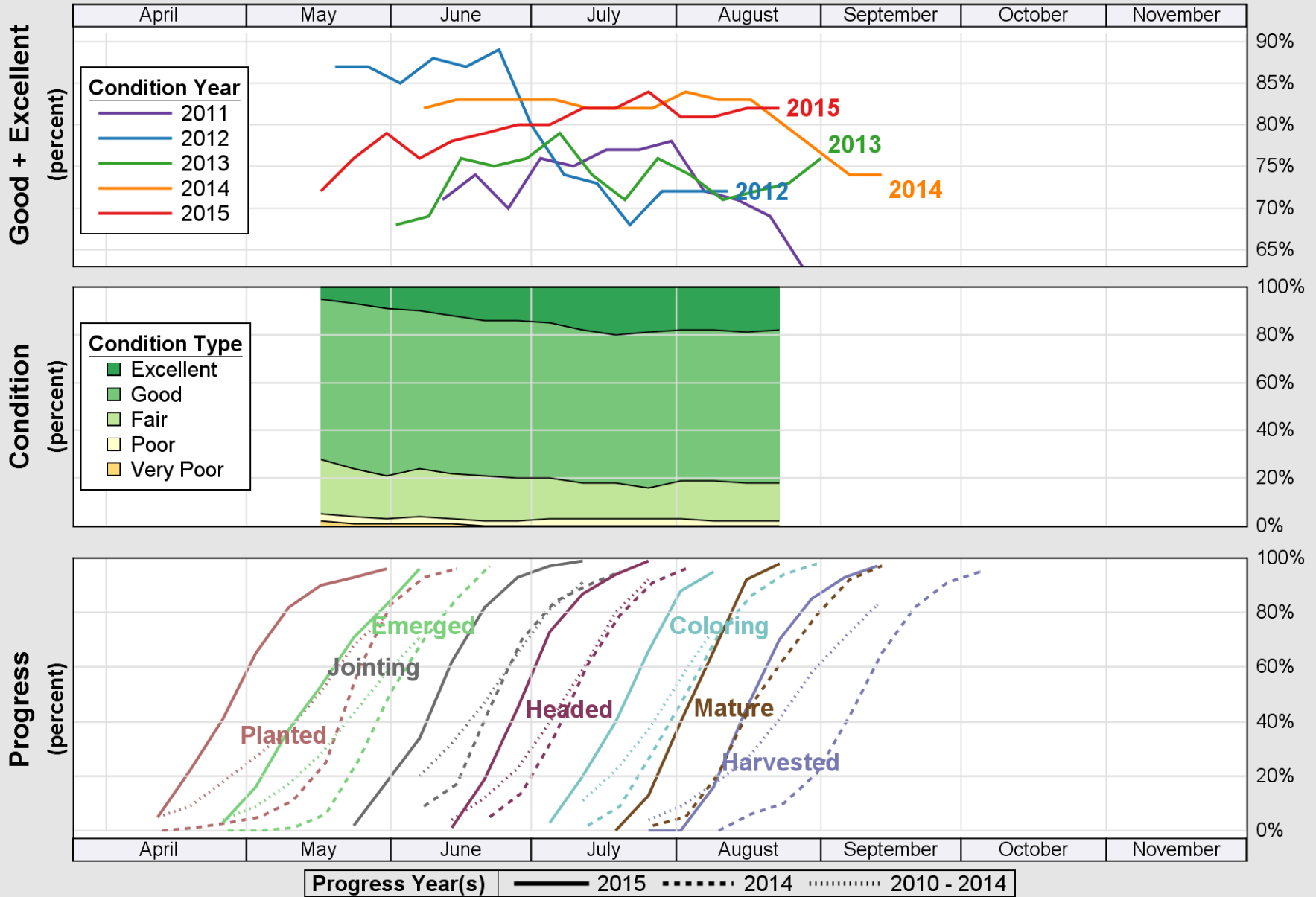


Source: National Agricultural Statistics Service (NASS), Crop Progress Report

USDA

Crop Progress and Condition: Spring Wheat in North Dakota , 2015

NASS

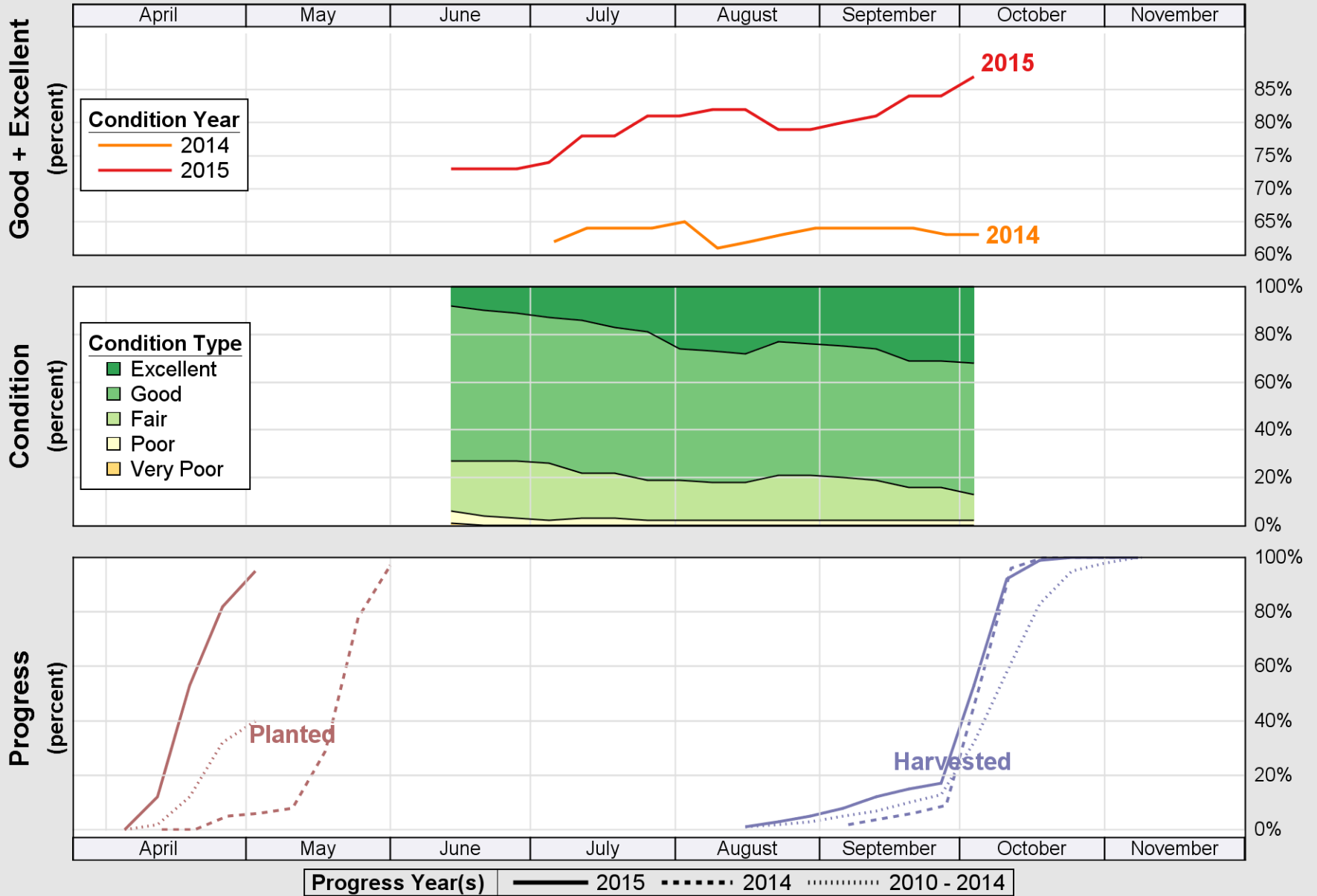


Source: National Agricultural Statistics Service (NASS), Crop Progress Report

USDA

Crop Progress and Condition: Sugar Beets in North Dakota , 2015

NASS

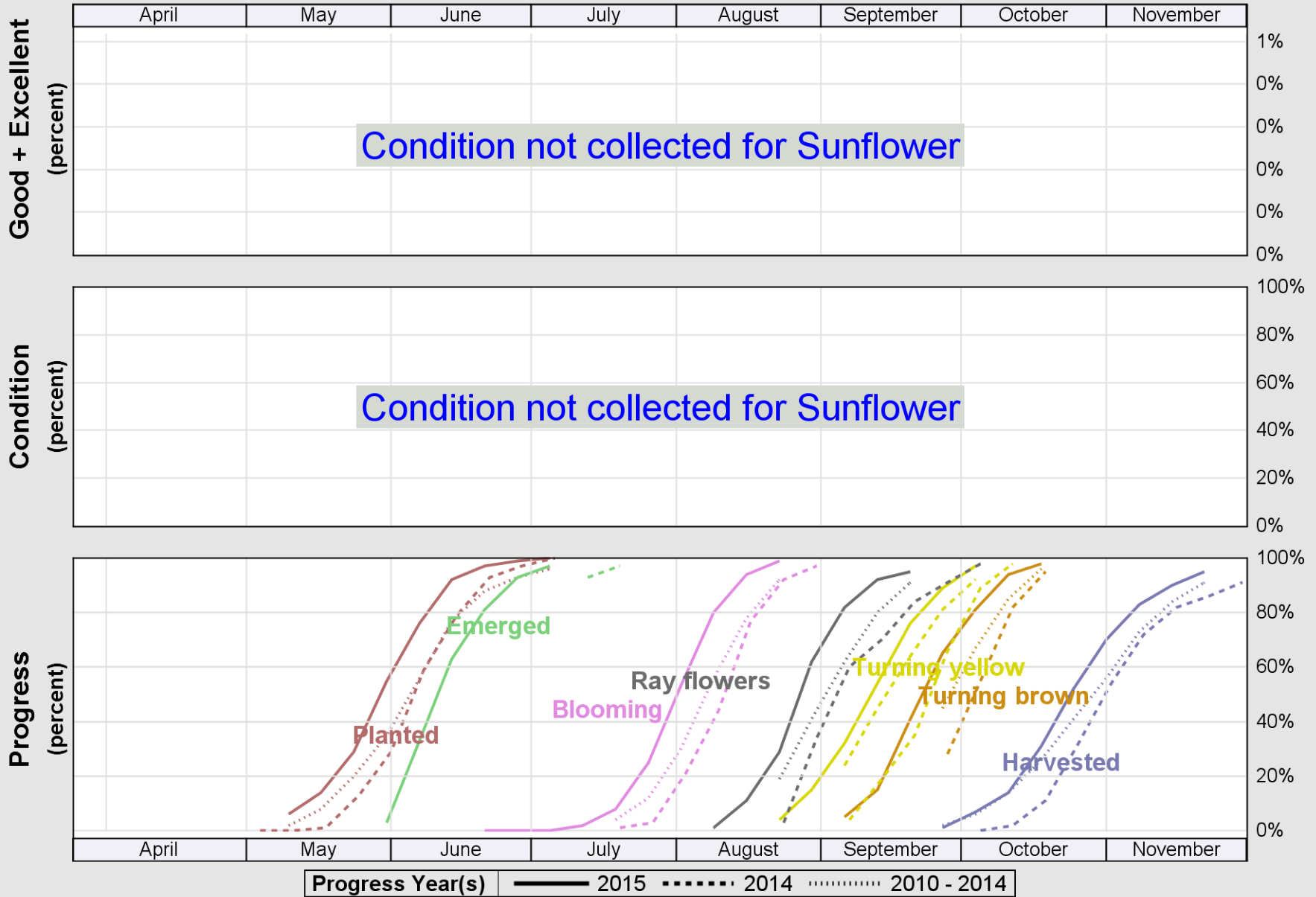


Source: National Agricultural Statistics Service (NASS), Crop Progress Report

USDA

Crop Progress and Condition: Sunflower in North Dakota , 2015

NASS

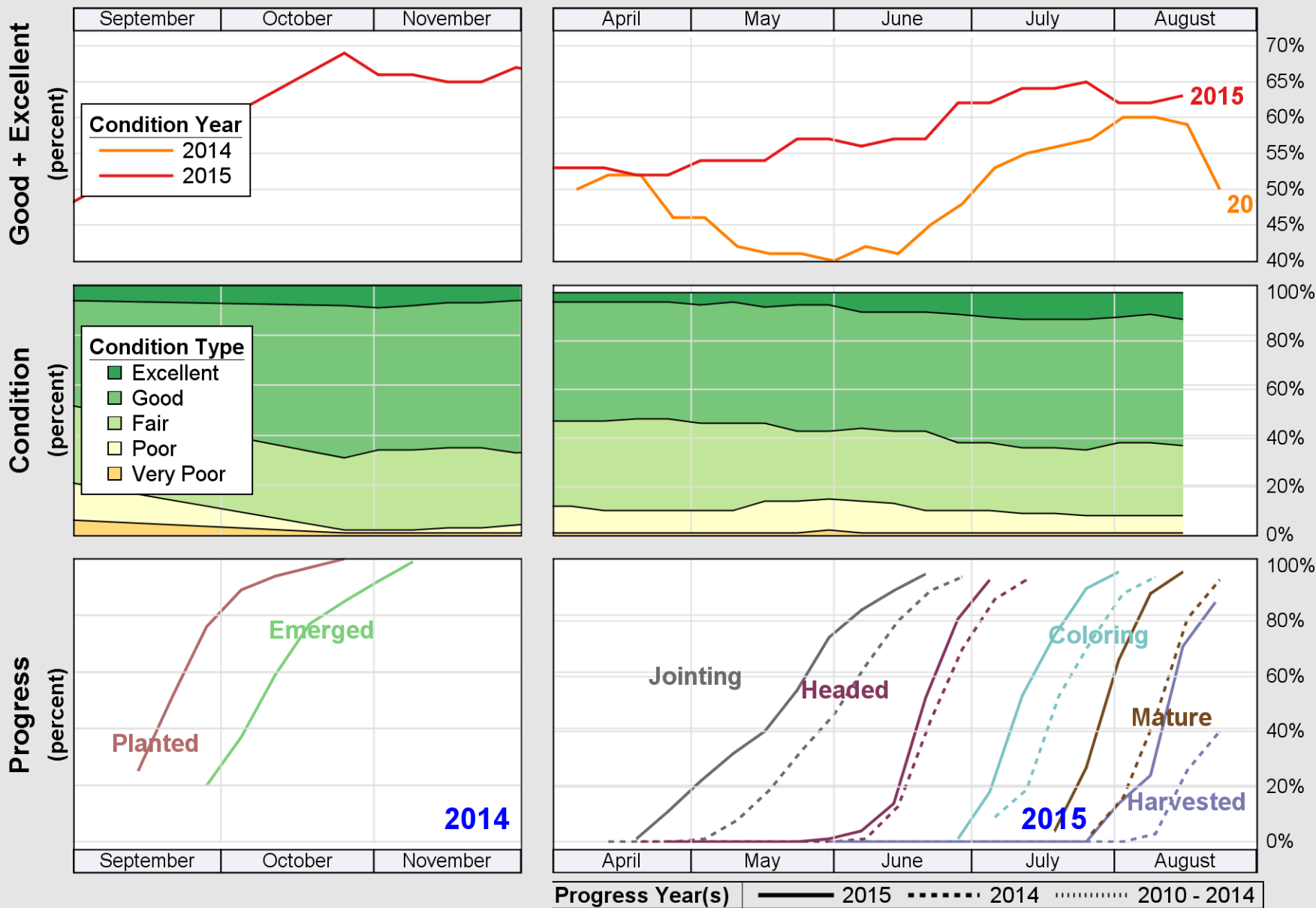


Source: National Agricultural Statistics Service (NASS), Crop Progress Report

USDA

Crop Progress and Condition: Winter Wheat in North Dakota , 2015

NASS



Source: National Agricultural Statistics Service (NASS), Crop Progress Report