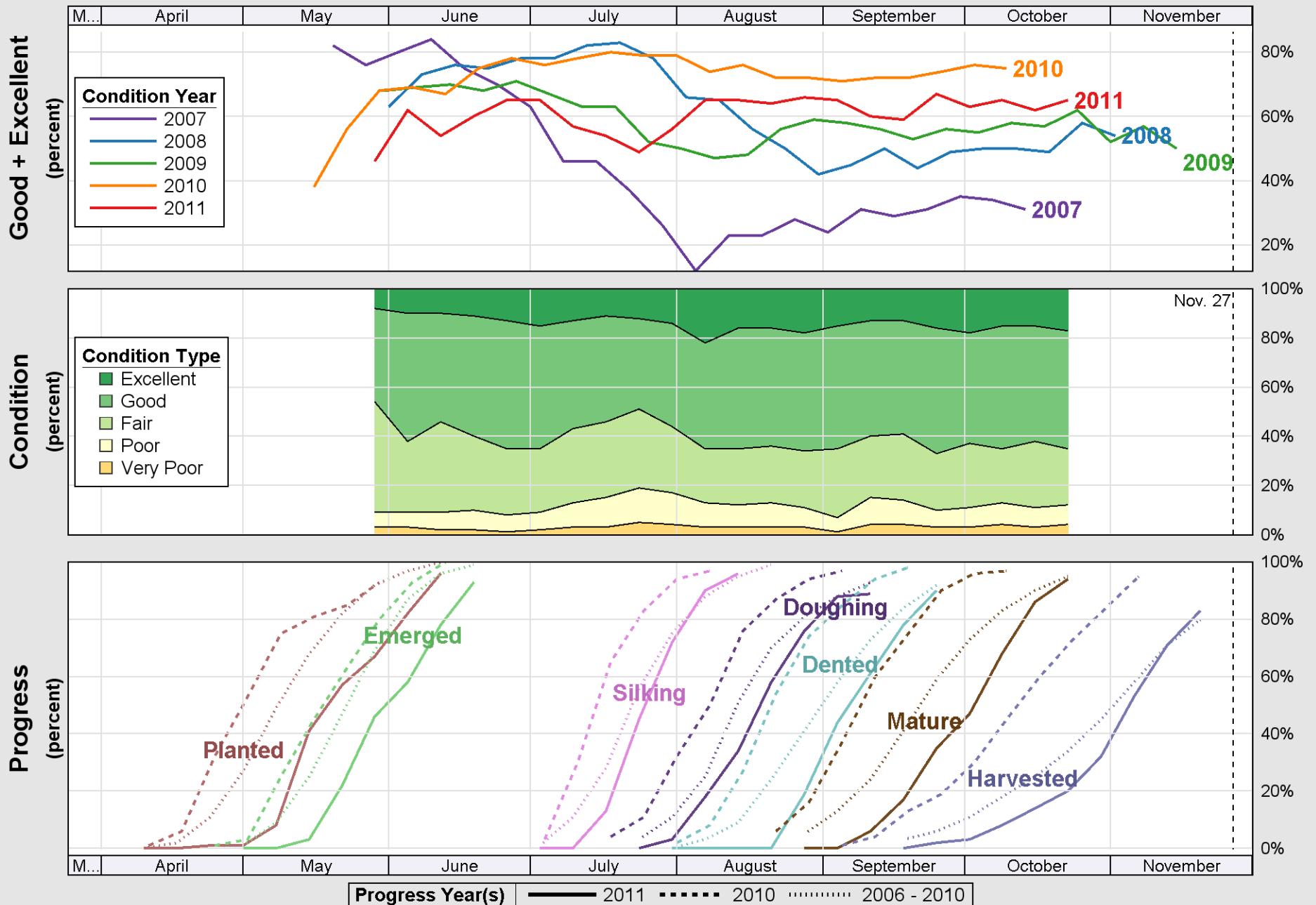
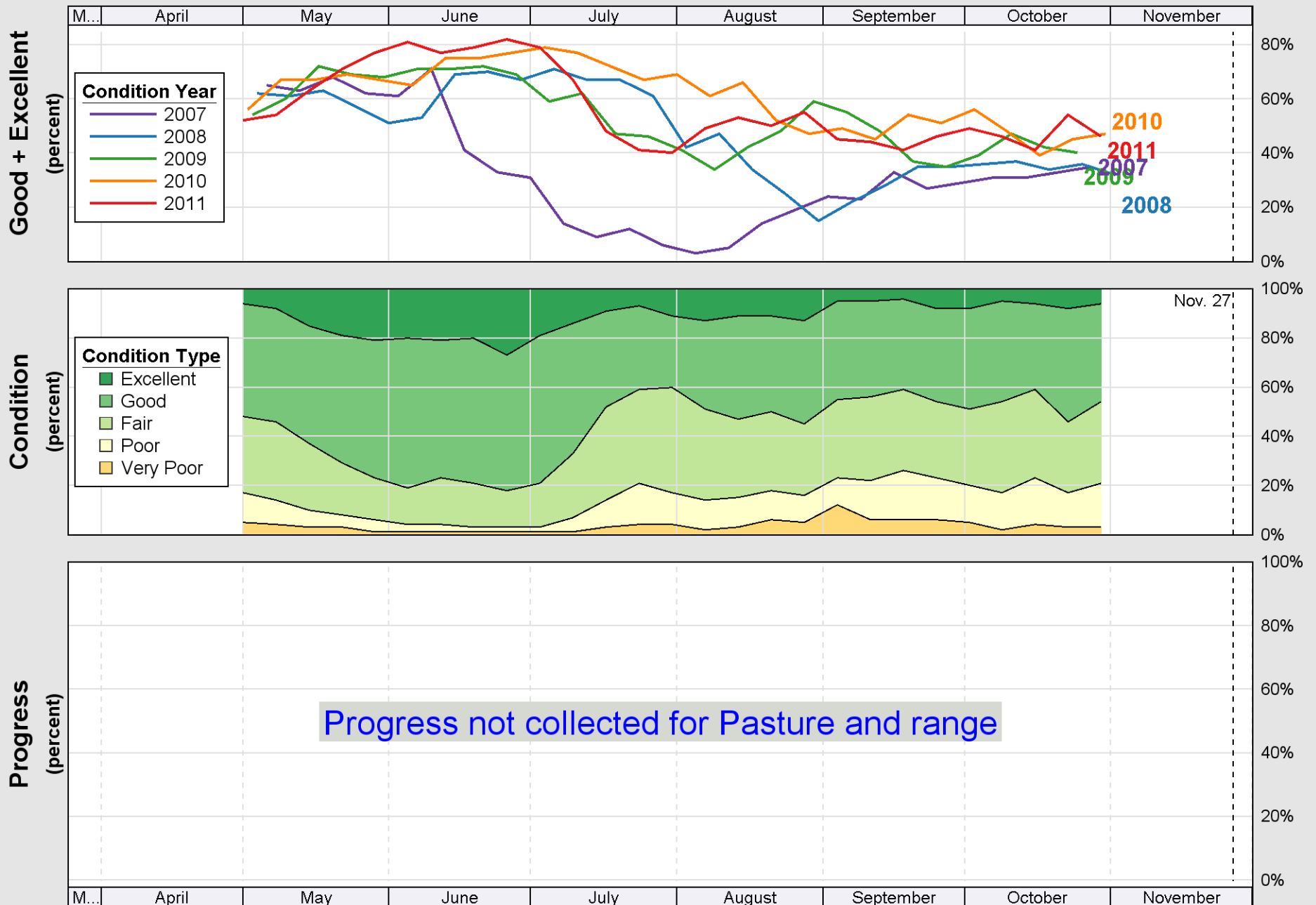


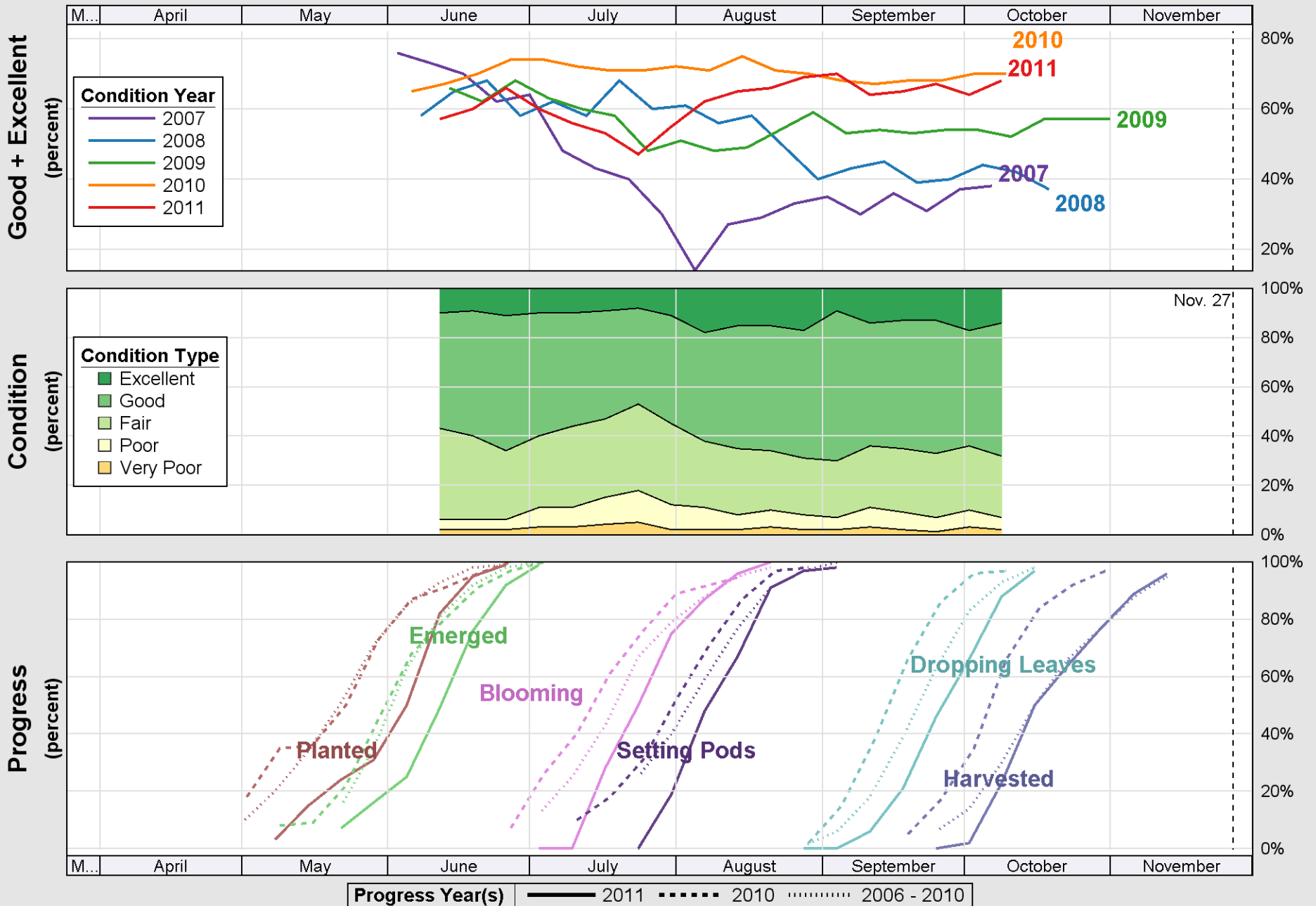
# Crop Progress and Condition: Corn in Michigan , 2011

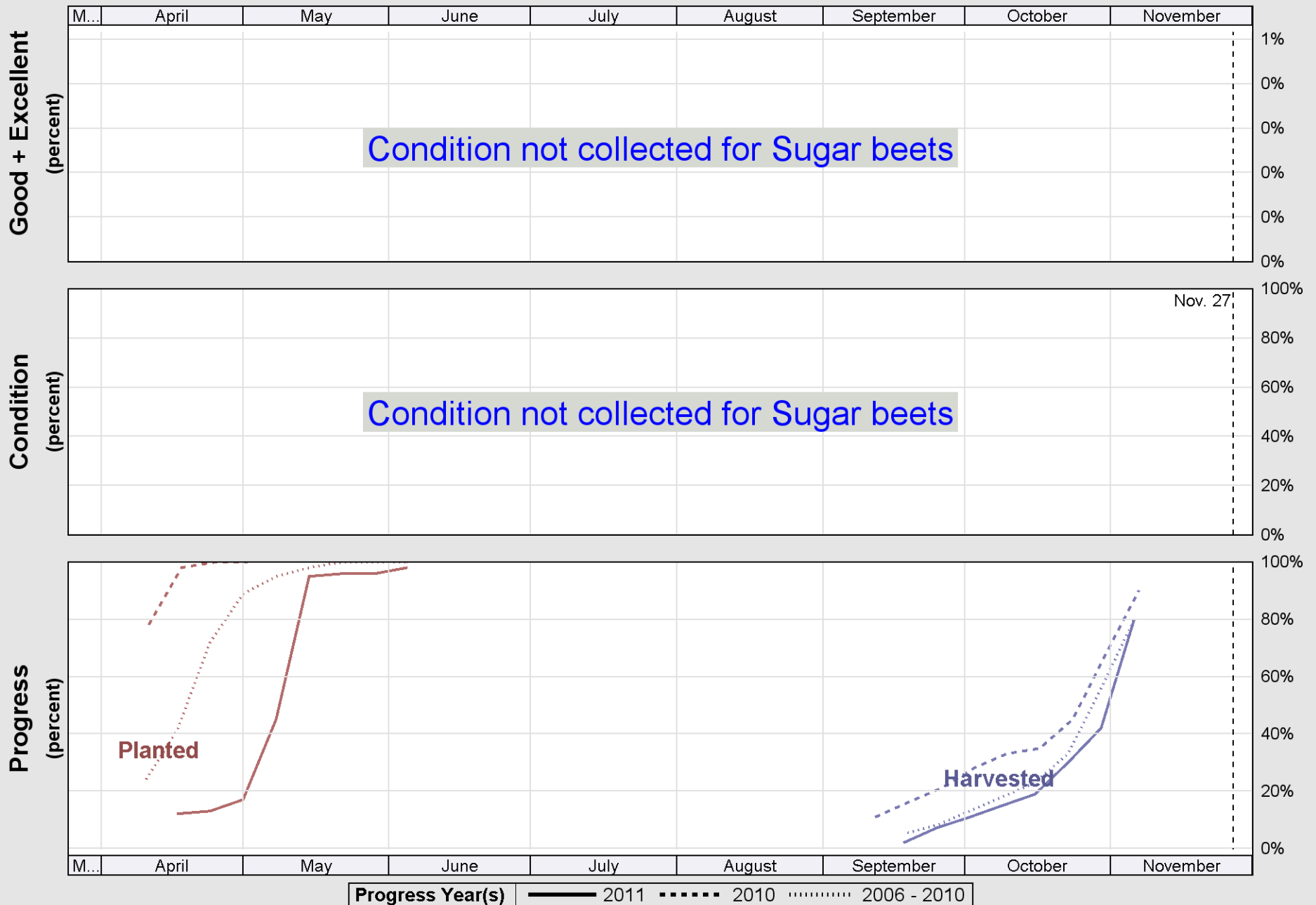


Source: National Agricultural Statistics Service (NASS), Crop Progress Report



# Crop Progress and Condition: Soybeans in Michigan , 2011

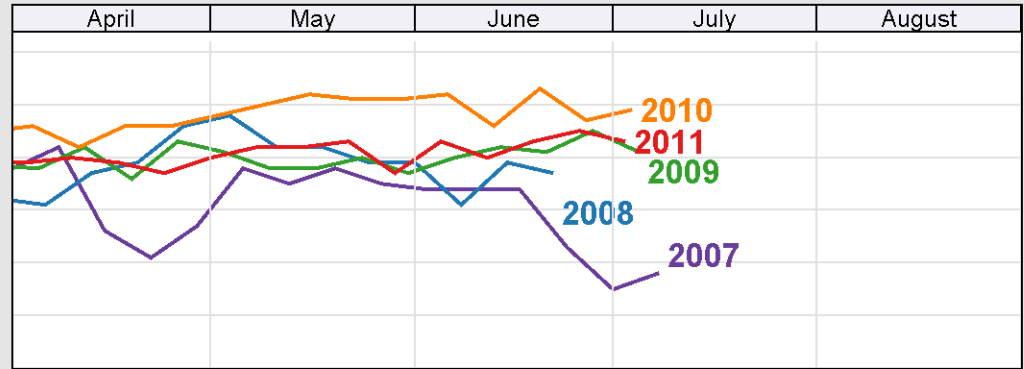
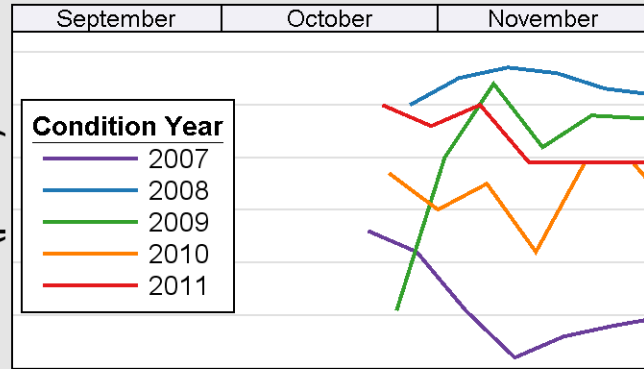




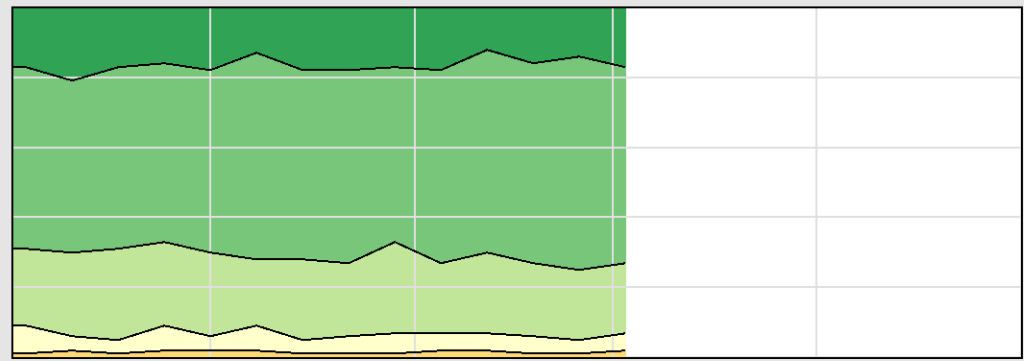
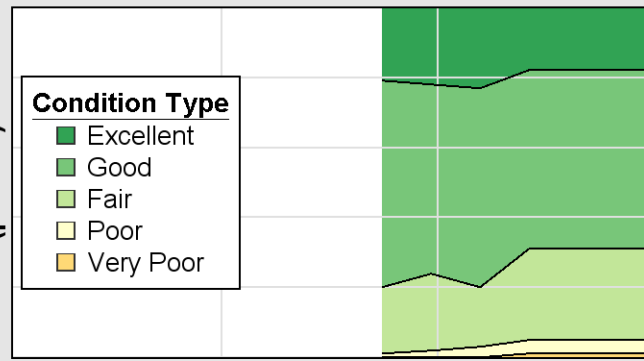
Source: National Agricultural Statistics Service (NASS), Crop Progress Report

### Crop Progress and Condition: Winter wheat in Michigan , 2011

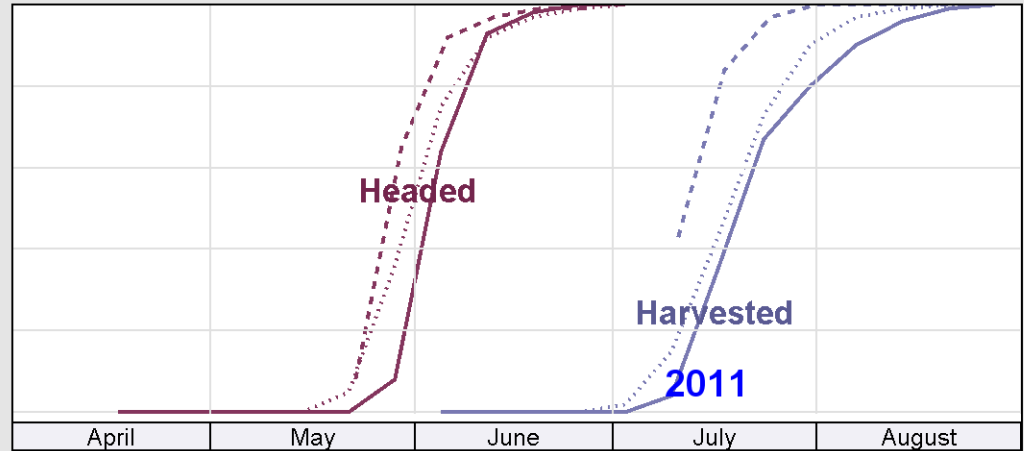
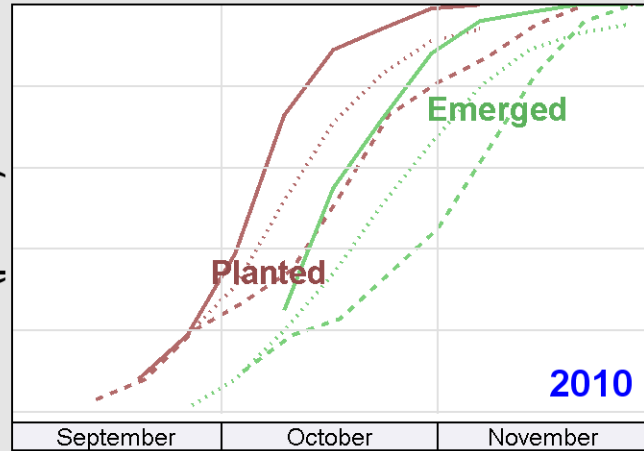
Good + Excellent (percent)



Condition (percent)



Progress (percent)



Progress Year(s) ——— 2011    - - - - - 2010    ······ 2006 - 2010

Source: National Agricultural Statistics Service (NASS), Crop Progress Report