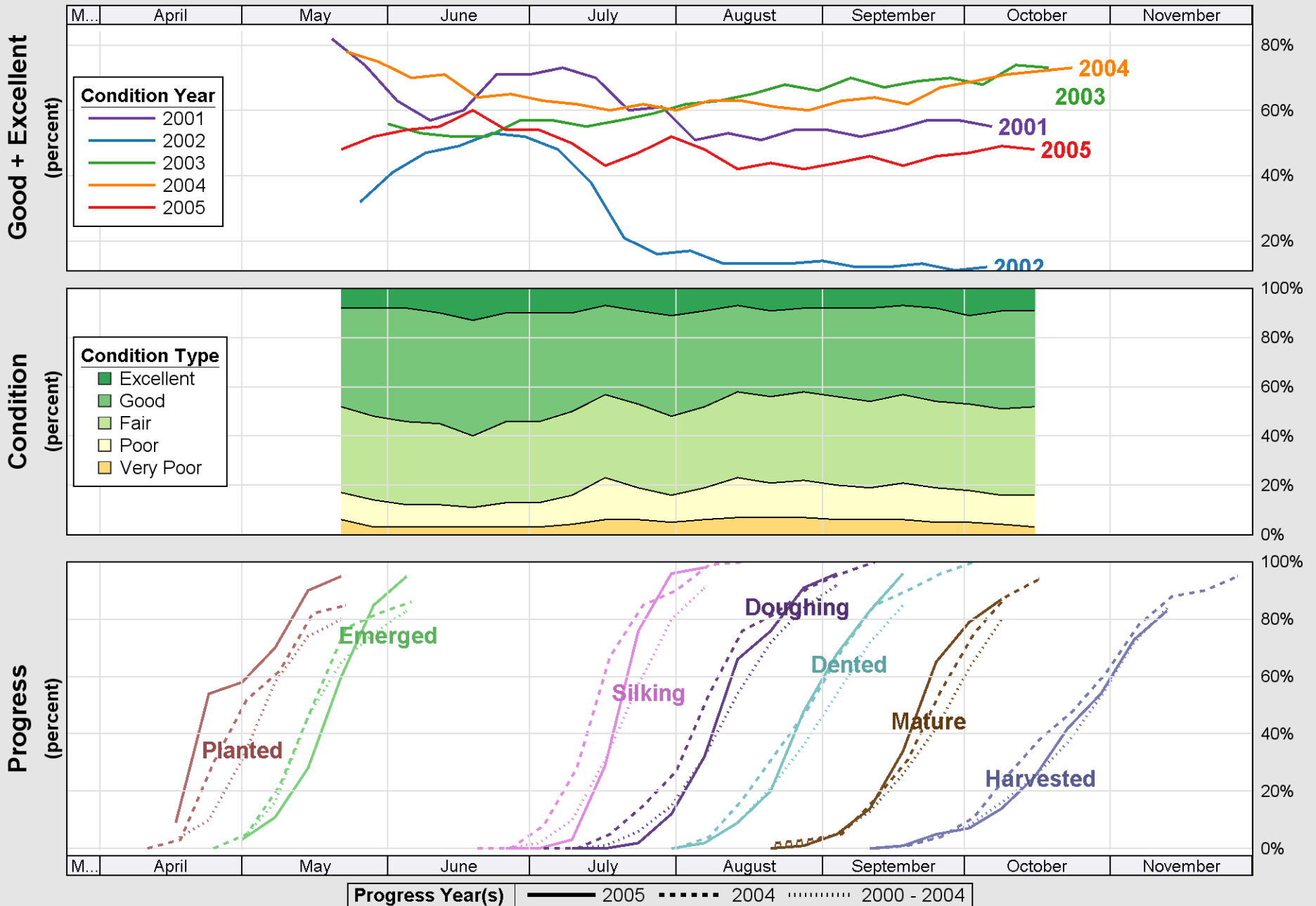
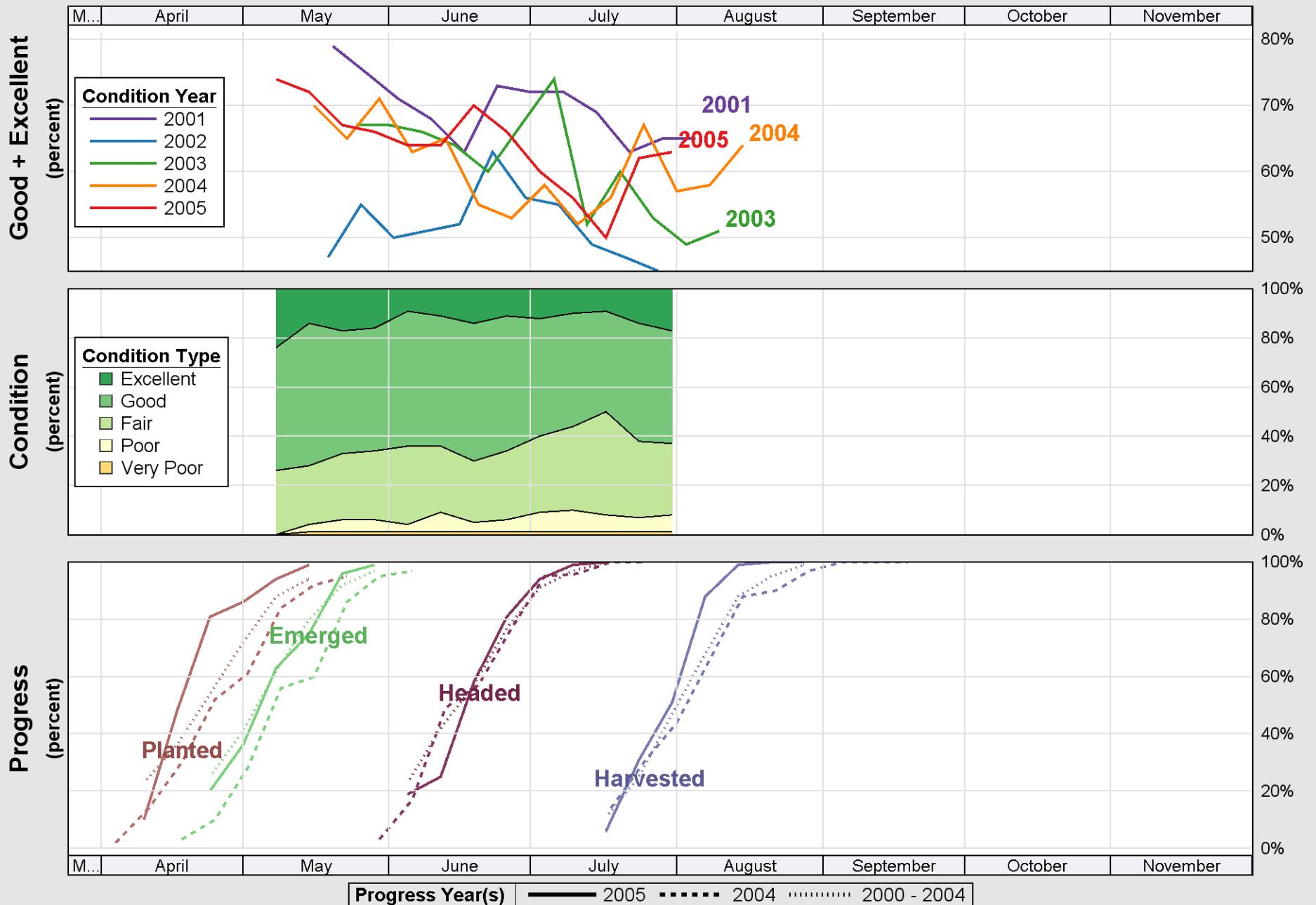


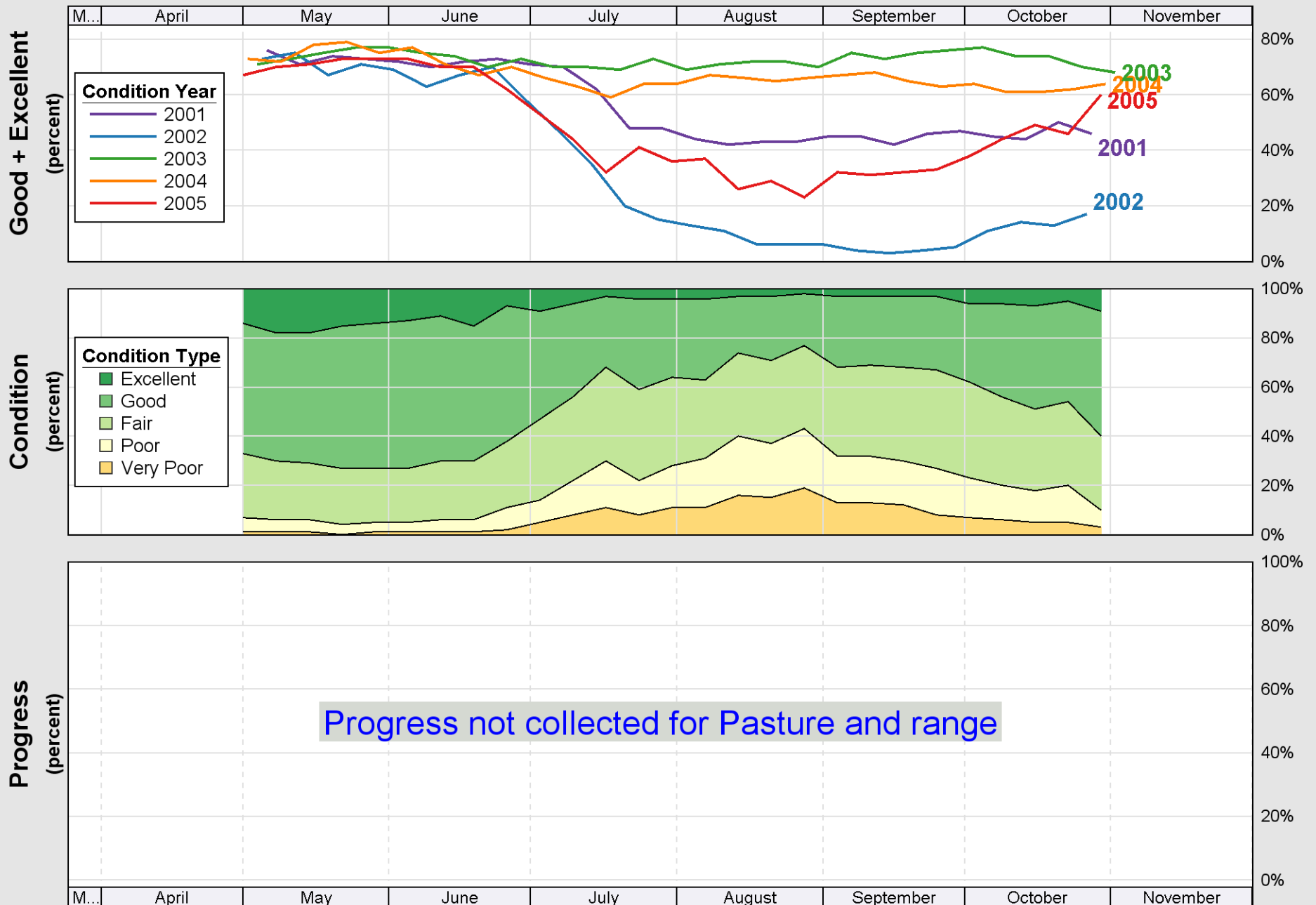
Crop Progress and Condition: Corn in Ohio , 2005

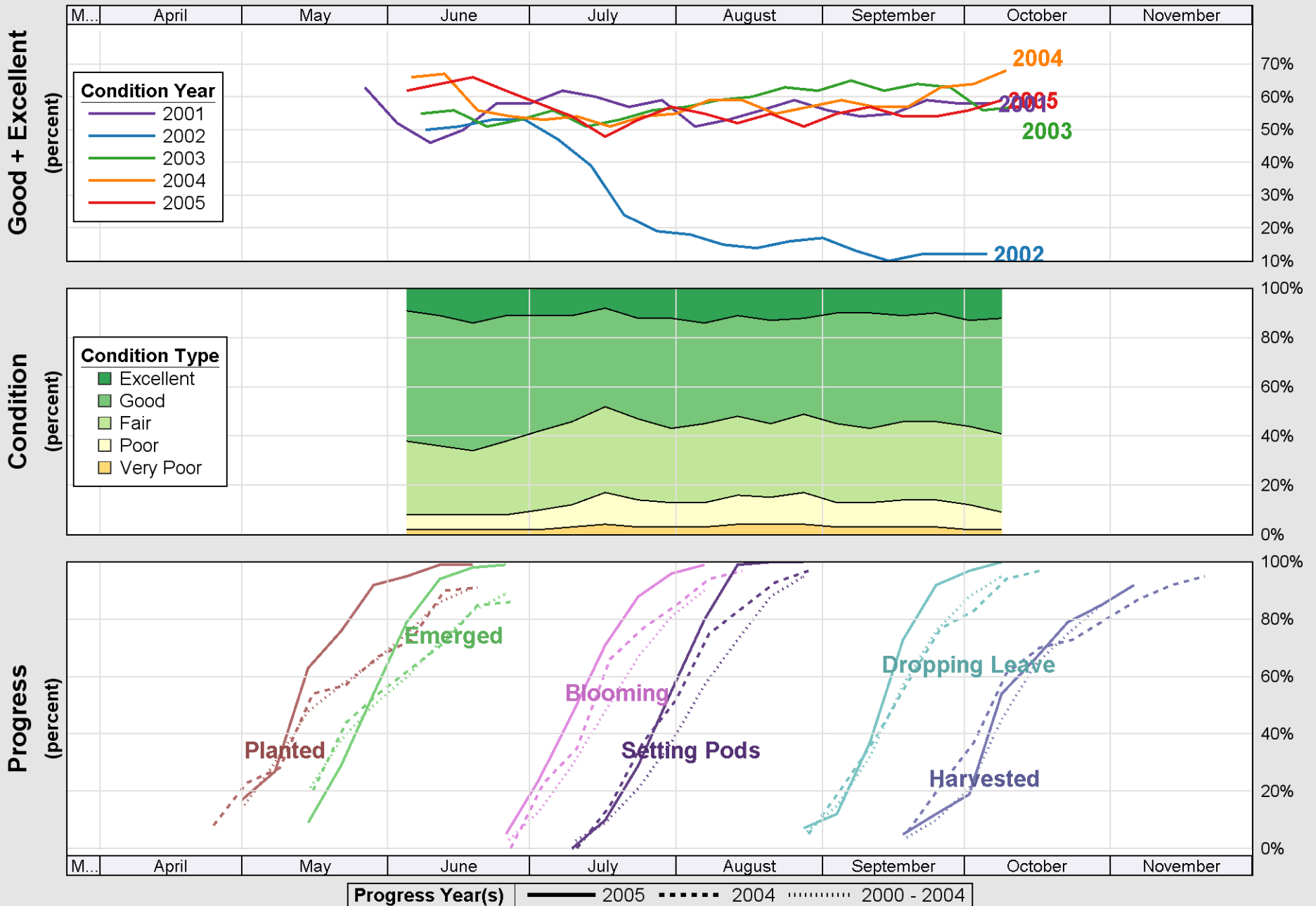


Source: National Agricultural Statistics Service (NASS), Crop Progress Report



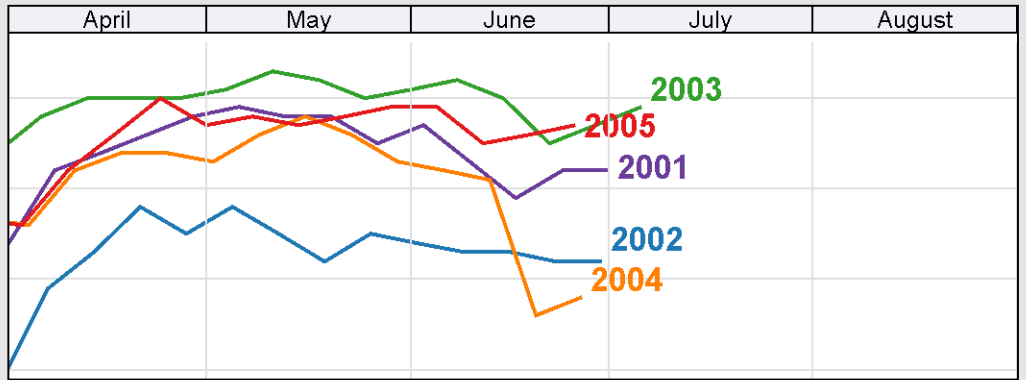
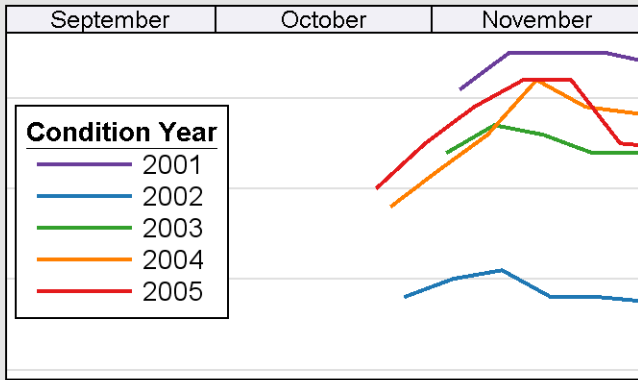
Source: National Agricultural Statistics Service (NASS), Crop Progress Report



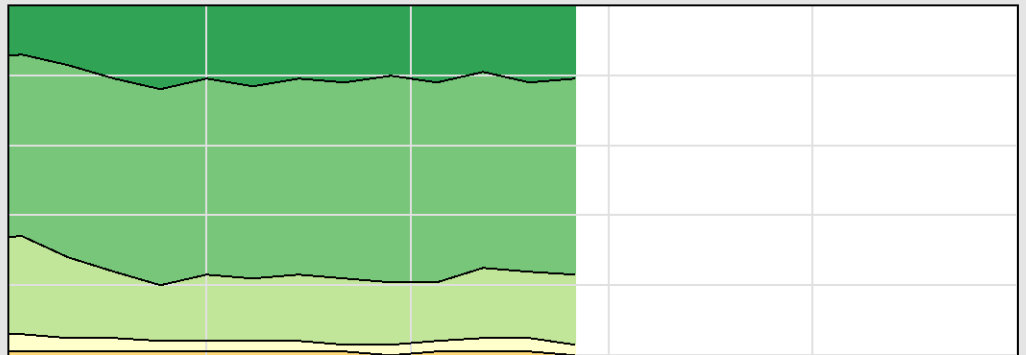
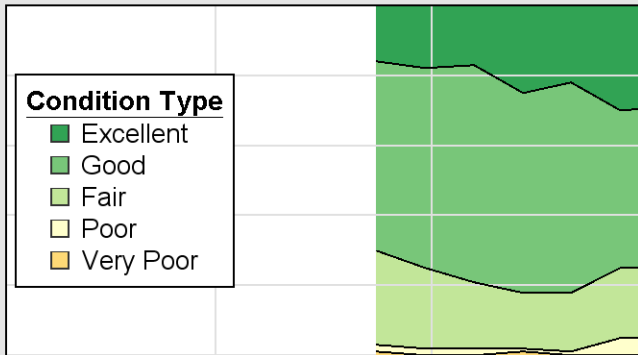


Source: National Agricultural Statistics Service (NASS), Crop Progress Report

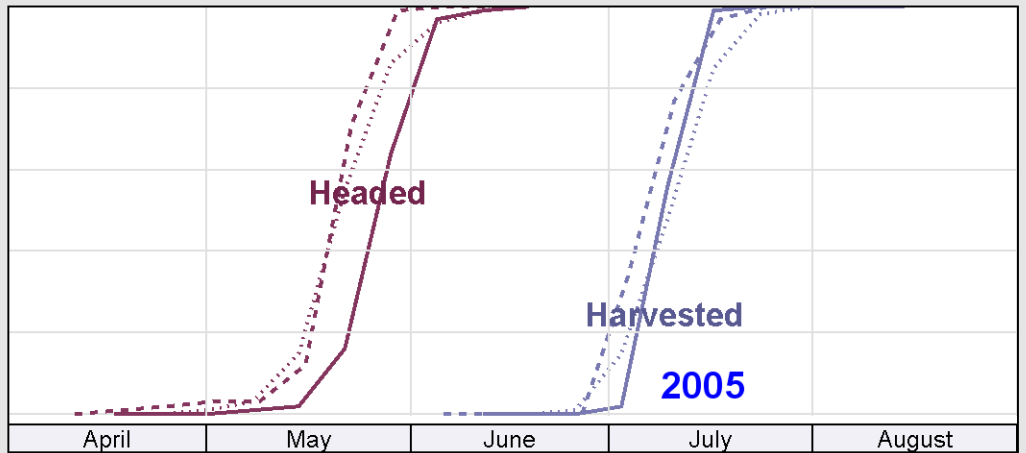
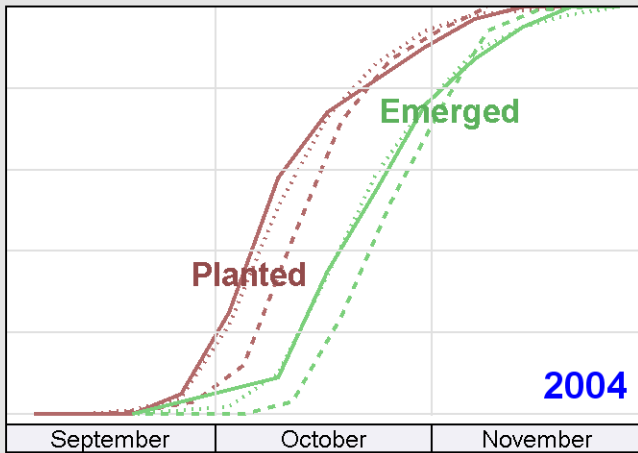
Good + Excellent
(percent)



Condition
(percent)



Progress
(percent)



Progress Year(s) ——— 2005 - - - - - 2004 2000 - 2004